

F.A.P. RTE.	SECTION	COUNTY	TOTAL SHEETS	SHEET NO.
345	8R-B-1-1	KANE	14	8

CONTRACT NO. 62963

SHEET 3 OF 8

NOTES:

Skew angle varies. Place "A(E)" bars parallel to the joint.

* Existing longitudinal reinforcement extending into the removal area shall be cleaned, straightened and incorporated into the new construction. Any reinforcement bars that are damaged during concrete removal shall be replaced with an approved bar splicer or anchorage system. Cost shall be included with Concrete Removal.

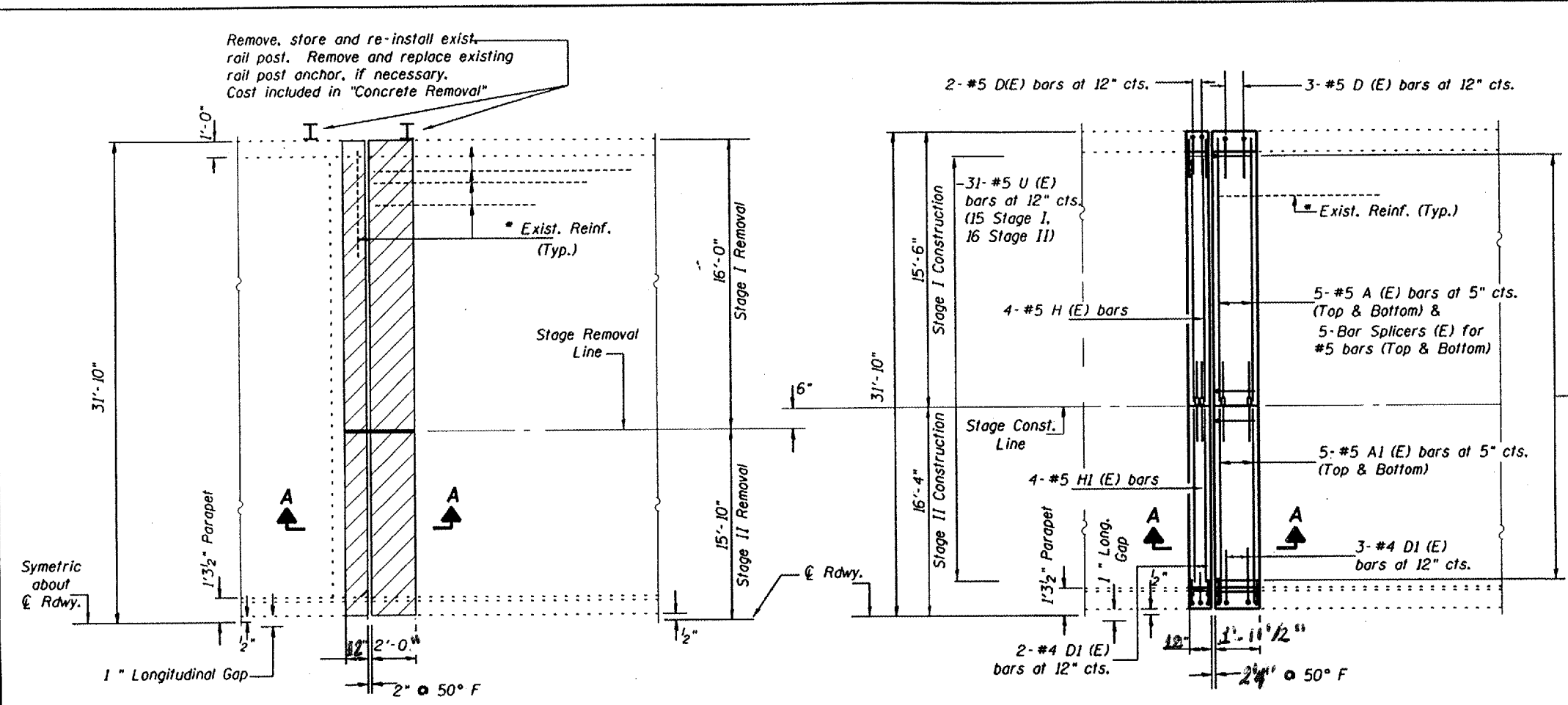
OPEN AREA SHALL BE PLATED WHEN WORKERS ARE NOT PRESENT. COST OF PLATE IS INCLUDED IN COST OF CONCRETE REMOVAL

BILL OF MATERIAL (ABUT.)

Concrete Removal	Cu. Yd.	8.2
Concrete Superstructure	Cu. Yd.	8.2
Reinforcement Bars, Epoxy Coated	Lbs.	1280
Bar Splicers	Each	28

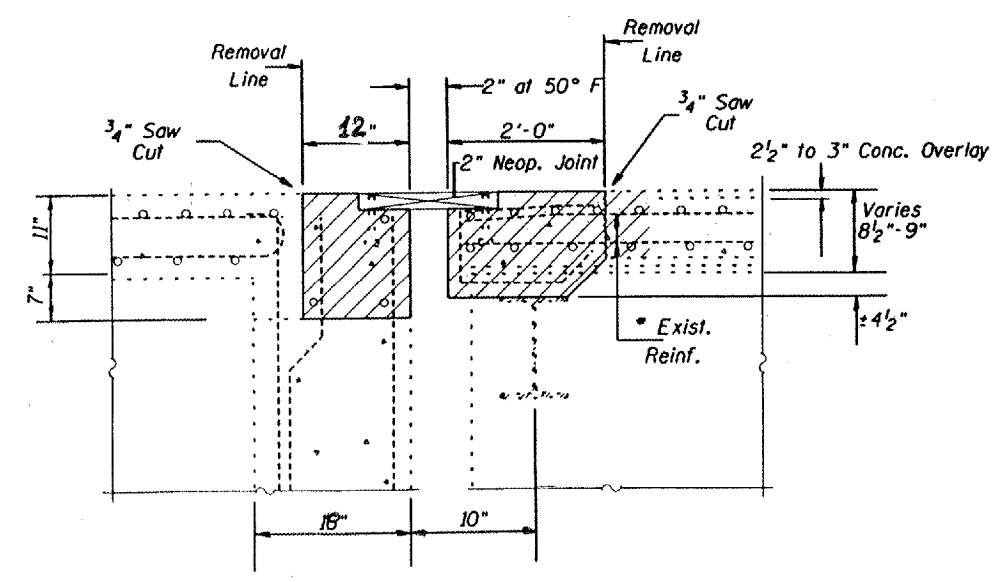
Reinforcement bars designated (E) shall be epoxy coated.

For bar details and bar list see Sheet 5 of 8.

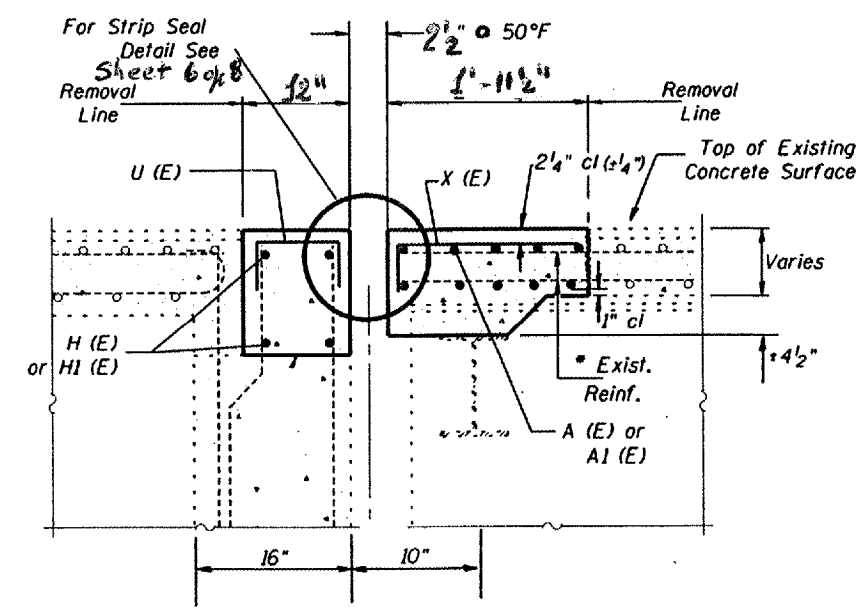


HALF PLAN SHOWING CONCRETE REMOVAL AT WEST ABUTMENT

HALF PLAN SHOWING CONCRETE REPLACEMENT AT WEST ABUTMENT



SECTION A-A (Existing)



SECTION A-A (Proposed)

ILLINOIS DEPARTMENT OF TRANSPORTATION

US 20 OVER FOX RIVER
SN 045-0004
JOINT DETAILS
(West Abutments)

SCALE: NONE
DATE 3/1/2006

DRAWN BY
CHECKED BY