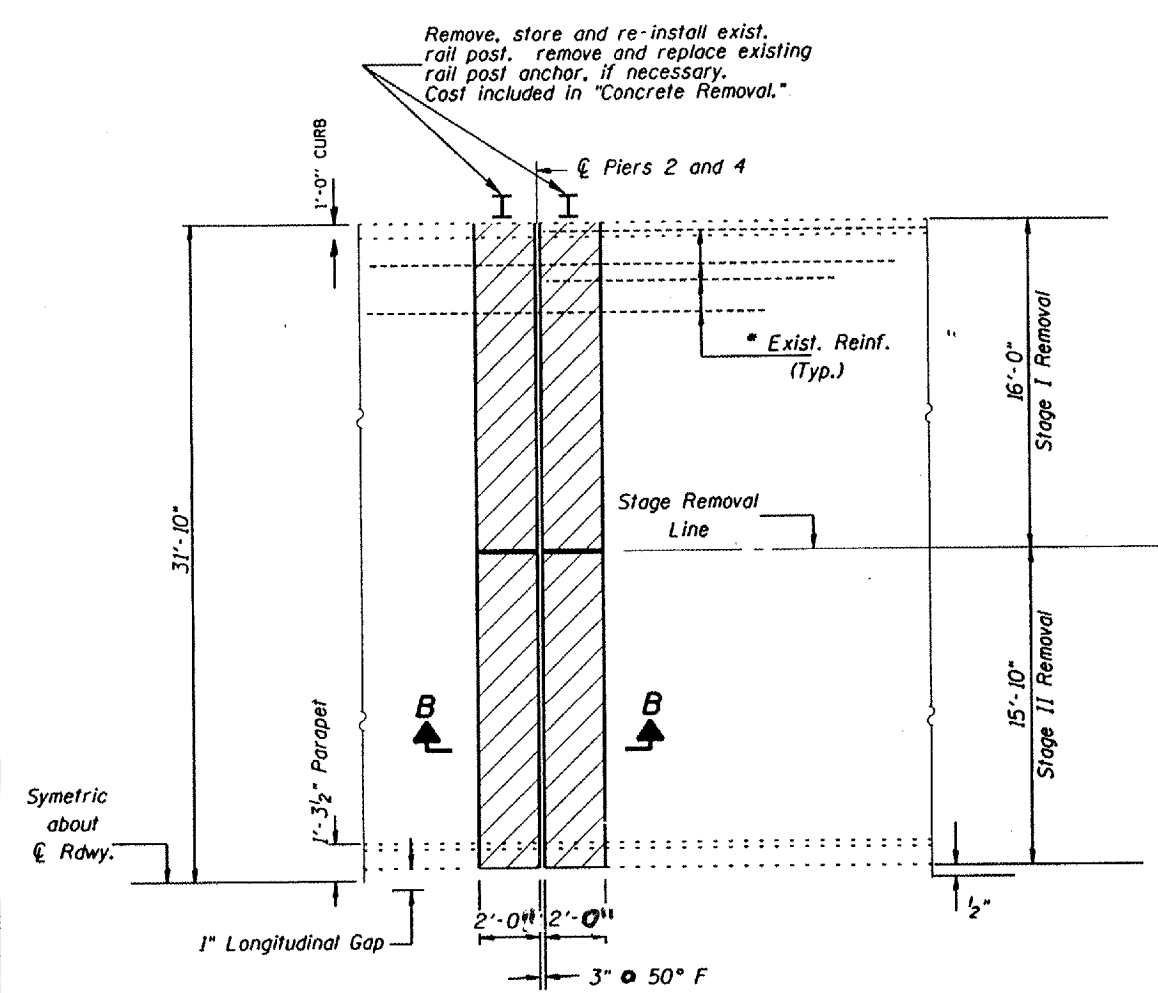


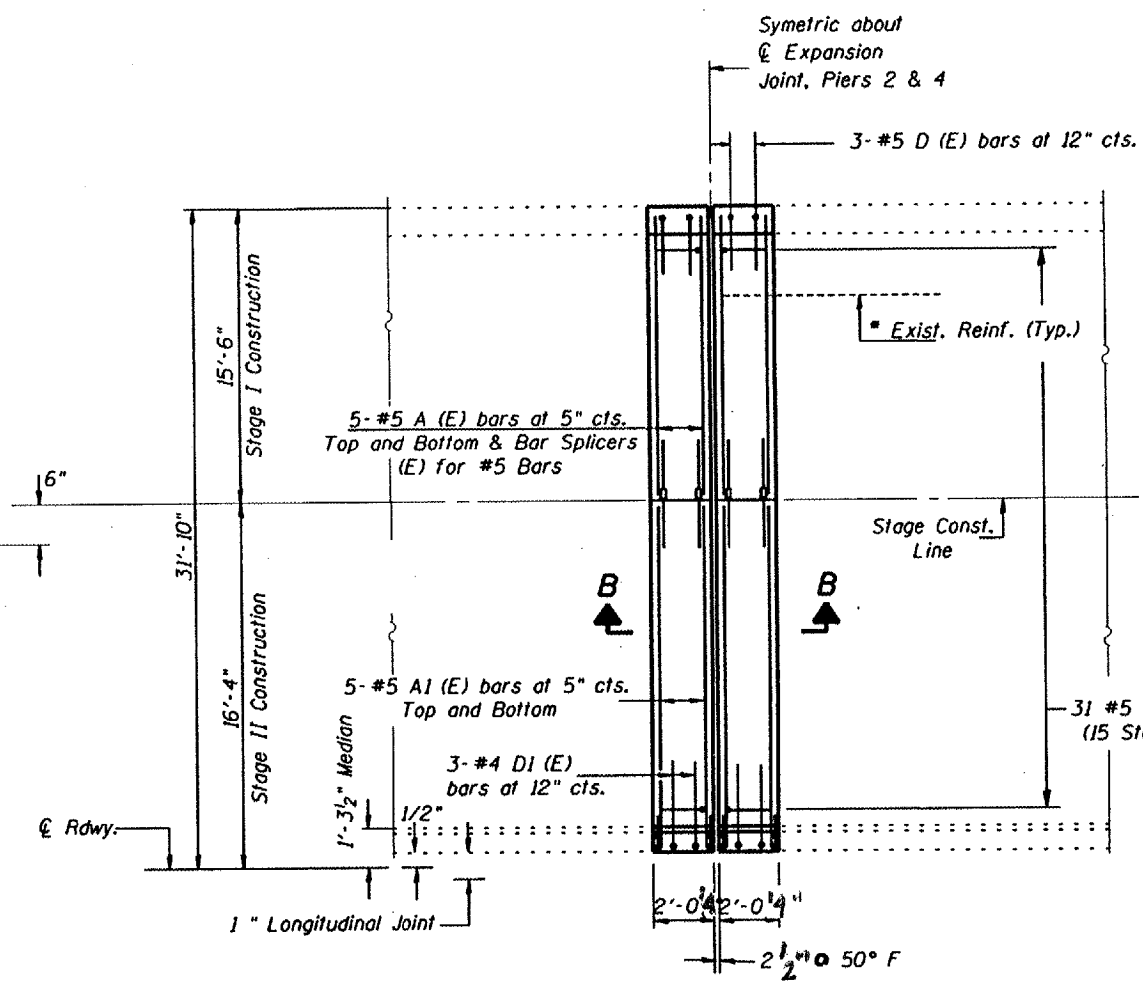
F.A.P. RTE.	SECTION	COUNTY	TOTAL SHEETS	SHEET NO.
345	8R-B-1-1	KANE	14	9

CONTRACT NO. 62963

SHEET 4 OF 8



HALF PLAN SHOWING CONCRETE REPLACEMENT AT PIER 2 AND 4



HALF PLAN SHOWING CONCRETE REPLACEMENT AT PIER 2 AND 4

NOTES:
 Skew angle varies. Place "A (E)" bars parallel to the joint.

* Existing longitudinal reinforcement extending into the removal area shall be cleaned, straightened and incorporated into the new construction. Any reinforcement bars that are damaged during concrete removal shall be replaced with an approved bar splicer or anchorage system. Cost shall be included with Concrete Removal.

OPEN AREA SHALL BE PLATED WHEN WORKERS ARE NOT PRESENT. COST OF PLATE IS INCLUDED IN COST OF CONCRETE REMOVAL

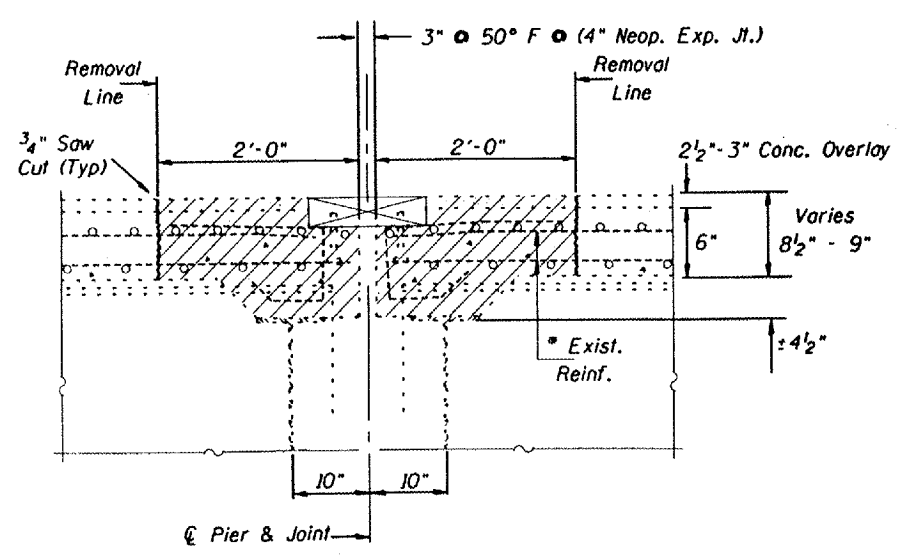
31 #5 X (E) Bars @ 12" cts.
 (15 Stage I, 16 Stage II)

BILL OF MATERIAL (2 PIERS)

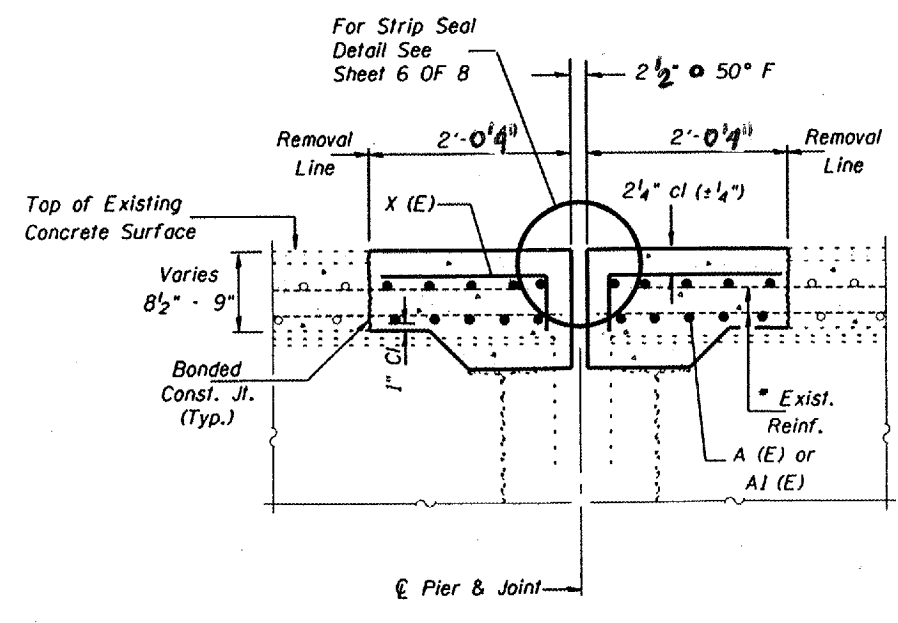
Concrete Removal	Cu. Yd.	19.5
Concrete Superstructure	Cu. Yd.	19.5
Reinforcement Bars, Epoxy Coated	Lbs.	3480
Bar Splicers	Each	80

Reinforcement bars designated (E) shall be epoxy coated.

For bar details and bar list see Sheet 5 of 8



SECTION B-B (Existing)



SECTION B-B (Proposed)

ILLINOIS DEPARTMENT OF TRANSPORTATION
US 20 OVER FOX RIVER
SN 045-0004
 JOINT DETAILS
 (Piers 2 & 4)

SCALE: NONE
 DATE

DRAWN BY
 CHECKED BY