

F.A.P. RTE.	SECTION	COUNTY	TOTAL SHEETS	SHEET NO.
345	8R-B-I-1	KANE	14	11

**CONTRACT NO. 62963**

SHEET 6 OF 8

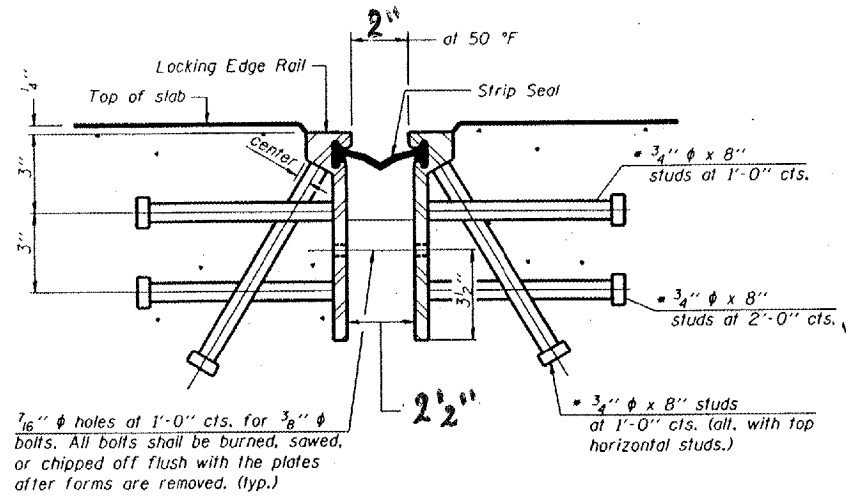
**GENERAL NOTES**

The strip seal shall be made continuous and shall have a minimum thickness of 1/4". The configuration of the strip seal shall match the configuration of the Locking Edge Rails.

The height and thickness of the Locking Edge Rails shown are minimum dimensions. The actual configuration of the Locking Edge Rails and matching strip seal may vary from manufacturer to manufacturer. Flanged edge rails will not be allowed.

Locking Edge Rails may be spliced at slope discontinuities and stage construction joints.

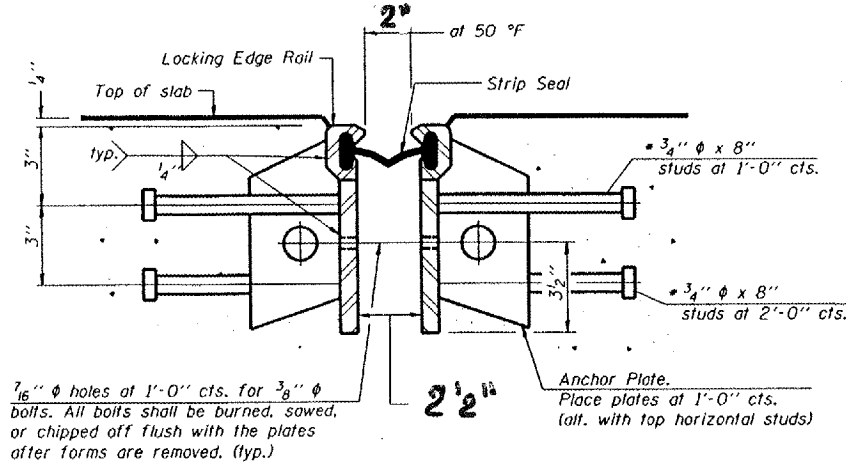
The manufacturer's recommended installation methods shall be followed.



7/16"  $\phi$  holes at 1'-0" cts. for 3/8"  $\phi$  bolts. All bolts shall be burned, sawed, or chipped off flush with the plates after forms are removed. (typ.)

**SECTION THRU ROLLED RAIL EXP. JOINT**

(916 Studs Required)

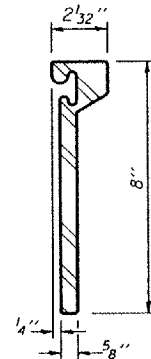


7/16"  $\phi$  holes at 1'-0" cts. for 3/8"  $\phi$  bolts. All bolts shall be burned, sawed, or chipped off flush with the plates after forms are removed. (typ.)

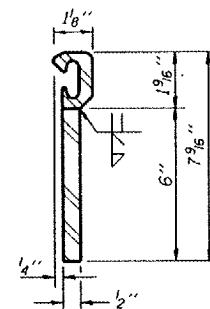
**SECTION THRU WELDED RAIL EXP. JOINT**

(550 Studs Required)  
(366 Anchor Plates Required)

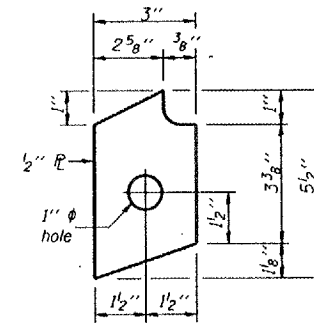
\* Granular or solid flux filled headed studs conforming to Article 1006.32 of the Std. Specs., automatically end welded.



**ROLLED (EXTRUDED) RAIL**



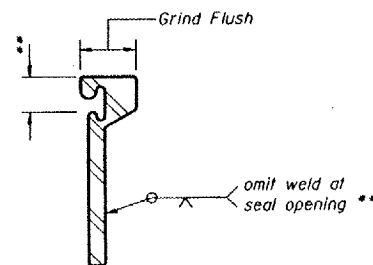
**WELDED RAIL**



**ANCHOR PLATE**

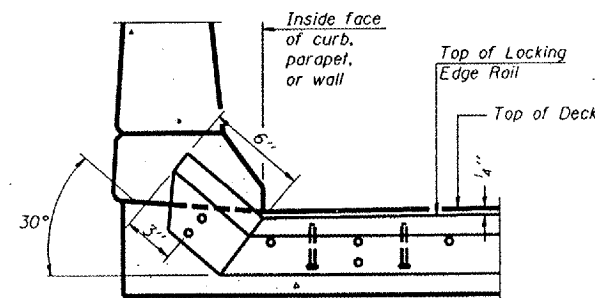
(for welded rail)

**LOCKING EDGE RAILS**

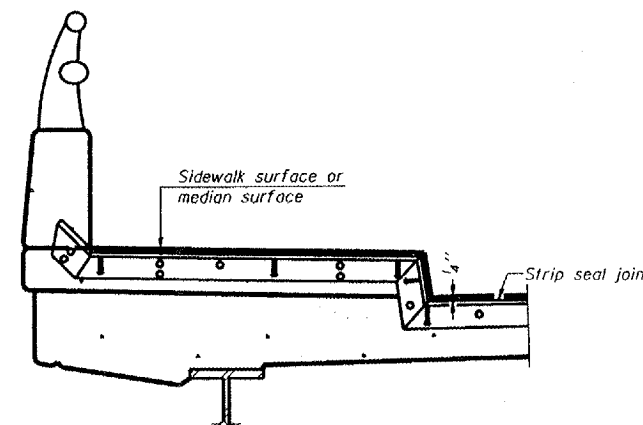


**LOCKING EDGE RAIL SPLICE**

The inside of the locking edge rail groove shall be free of weld residue.



**AT CURB, PARAPET, OR WALL**



**AT SIDEWALK OR MEDIAN\***

\* Shorter plates with a single row of studs at 12" centers may be necessary on medians which are shallower than 9". See manufacturer's recommendation.

**TYPICAL END TREATMENTS**

MODIFIED EJ-BJS

10-22-04

ILLINOIS DEPARTMENT OF TRANSPORTATION

**BRIDGE JOINT SYSTEM (EXPANSION) STRIP SEAL DETAILS**

SCALE: NONE

DATE

DRAWN BY

CHECKED BY