

ROUTE	SECTION	COUNTY	TOTAL SHEETS	SHEET NUMBER
FAP 345	8R-B-I-1	KANE	14	1

FOR INDEX OF SHEETS SEE SHEET 2

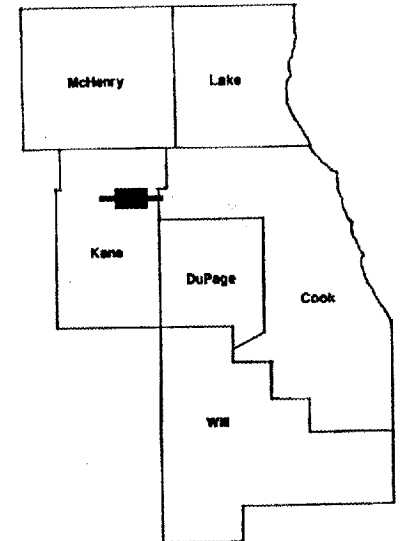
CONTRACT NO. 62963

STATE OF ILLINOIS
DEPARTMENT OF TRANSPORTATION
DIVISION OF HIGHWAYS
DISTRICT ONE
PROPOSED HIGHWAY PLANS

FAP ROUTE 345: US 20
OVER FOX RIVER
SECTION 8R-B-I-1
BRIDGE REPAIR
KANE COUNTY
C-91-216-05
SN 045-0004

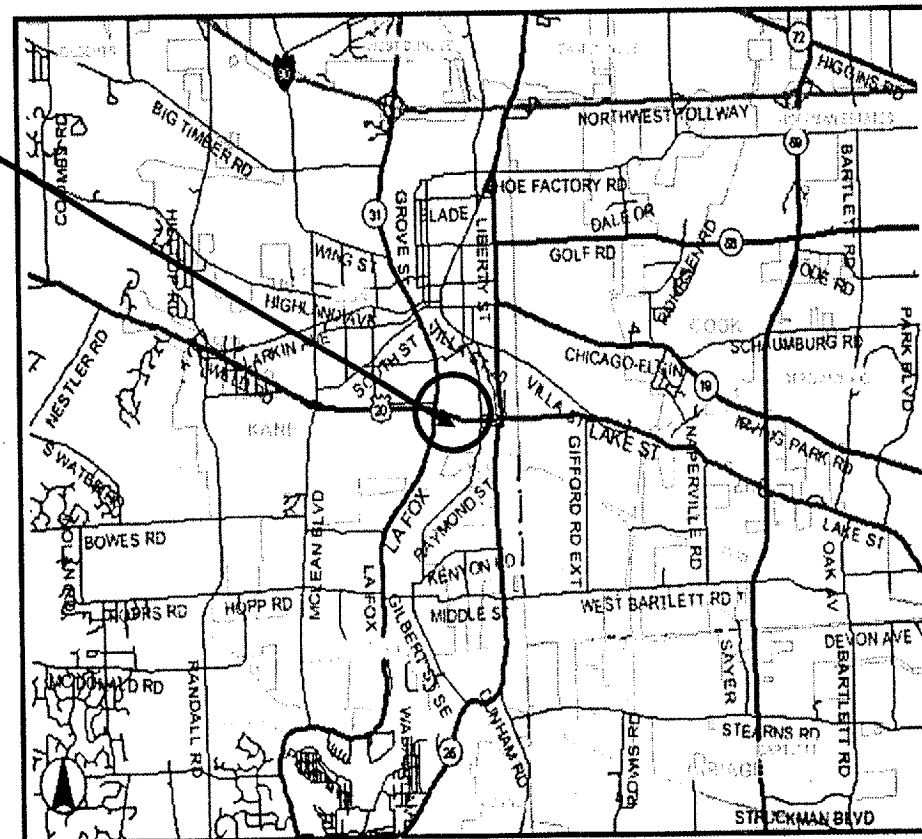
IMPROVEMENT IS LOCATED IN
THE CITY OF ELGIN

D-91-216-05



LOCATION OF IMPROVEMENT INDICATED THUS:

LOCATION OF
IMPROVEMENT AT
SN 045-0004



TRAFFIC DATA:

SPEED LIMIT = 55 MPH
2001 ADT = 53,300

STATE OF ILLINOIS
DEPARTMENT OF TRANSPORTATION
DIVISION OF HIGHWAYS
SUBMITTED: Feb. 28 2006
Diane M. O'Keefe
DEPUTY DIRECTOR OF HIGHWAYS, REGION ENGINEER
May 12, 2006
Mike Hine
ENGINEER OF DESIGN AND ENVIRONMENT
May 12, 2006
Milton R. Sees P.E.
DIRECTOR, DIVISION OF HIGHWAYS

PRINTED BY THE AUTHORITY
OF THE STATE OF ILLINOIS

J.U.L.I.E.: JOINT UTILITY LOCATION
INFORMATION FOR EXCAVATION
(800) 892-0123

CONTRACT NO. 62963

ELGIN TOWNSHIP

DISTRICT ONE - DESIGN - PLAN PREPARATION ENGINEER:
KEN ENG / ROBERT BORO (847) 705-4178

ROUTE	SECTION	COUNTY	TOTAL SHEETS	SHEET NUMBER
FAP 345	8R-B-I-1	KANE	14	2

CONTRACT NO: 62963

INDEX OF SHEETS

1	TITLE SHEET
2	INDEX OF SHEETS, STATE STANDARDS AND GENERAL NOTES
3	SUMMARY OF QUANTITIES
4 - 5	TRAFFIC STAGING
6 - 13	BRIDGE REPAIR PLAN SHEETS
14	TRAFFIC CONTROL AND PROTECTION FOR SIDE ROADS, INTERSECTIONS AND DRIVEWAYS

STATE STANDARDS

STANDARD NO	DESCRIPTION
701411 - 03	LANE CLOSURE, MULTILANE, AT ENTRANCE OR EXIT RAMP, FOR SPEEDS > 45 MPH
701422 - 01	LANE CLOSURE, MULTILANE, FOR SPEEDS \geq 45 MPH TO 55 MPH
701426 - 02	LANE CLOSURE, MULTILANE, INTERMITTENT OR MOVING OPER., FOR SPEED \geq 45 MPH
702001 - 06	TRAFFIC CONTROL DEVICES

GENERAL NOTES

BEFORE STARTING ANY EXCAVATION, THE CONTRACTOR SHALL CALL J.U.L.I.E. AT 800-892-0123 FOR FIELD LOCATIONS OF BURIED ELECTRIC, TELEPHONE AND GAS UTILITIES (48 HOURS NOTIFICATION IS REQUIRED).

THE CONTRACTOR WILL NOT BE ALLOWED TO SET UP A YARD OR FIELD OFFICE ON STATE PROPERTY WITHOUT WRITTEN PERMISSION FROM THE DEPARTMENT.

IT SHALL BE THE CONTRACTOR'S RESPONSIBILITY TO VERIFY ALL DIMENSIONS AND CONDITIONS EXISTING IN THE FIELD PRIOR TO CONSTRUCTION AND ORDERING OF MATERIALS.

THE CONTRACTOR SHALL CONTACT THE DISTRICT ONE TRAFFIC CONTROL SUPERVISOR AT (847) 705-4470 A MINIMUM OF 72 HOURS IN ADVANCE OF BEGINNING WORK.

THE CONTRACTOR SHALL BE REQUIRED TO PROVIDE ACCESS TO ABUTTING PROPERTY AT ALL TIMES DURING THE CONSTRUCTION OF THIS PROJECT.

DO NOT SCALE PLANS FOR CONSTRUCTION DIMENSIONS.

THE CONTRACTOR SHALL COORDINATE CONSTRUCTION ACTIVITIES WITH UTILITY COMPANIES.

WHEN ARTIFICIAL LIGHTING IS USED IN NIGHT OPERATIONS, THE CONTRACTOR SHALL EXERCISE THE UPMOST PRECAUTIONS IN PREVENTING ADVERSE VISIBILITY TO THE MOTORING PUBLIC AND ADJOINING RESIDENTIAL AREAS.

ANY PAVEMENT MARKINGS OBLITERATED BY THE WORK SHALL BE REPLACED AND PAID FOR IN KIND. BEFORE BEGINNING WORK, THE CONTRACTOR SHALL RETAIN AND RECORD (FOR FUTURE REFERENCE), ALL EXISTING PAVEMENT MARKING LINES AND RAISED REFLECTIVE PAVEMENT MARKERS IN ORDER THAT THESE LOCATIONS CAN BE RE-ESTABLISHED FOR STRIPING. EXACT LOCATIONS OF ALL STRIPING SHALL BE AS DIRECTED BY THE ENGINEER.

THESE PLANS HAVE BEEN PREPARED FROM NOTES RECEIVED FROM FIELD MAINTENANCE ENGINEERS.

ILLINOIS DEPARTMENT OF TRANSPORTATION

INDEX OF SHEETS
STATE STANDARDS
GENERAL NOTES

	ROUTE	SECTION	COUNTY	TOTAL SHEETS	SHEET NUMBER
	FAP 345	8R-B-I-1	KANE	14	3

CONTRACT NO.: 62963

URBAN
100% STATE
SFTY - 2A

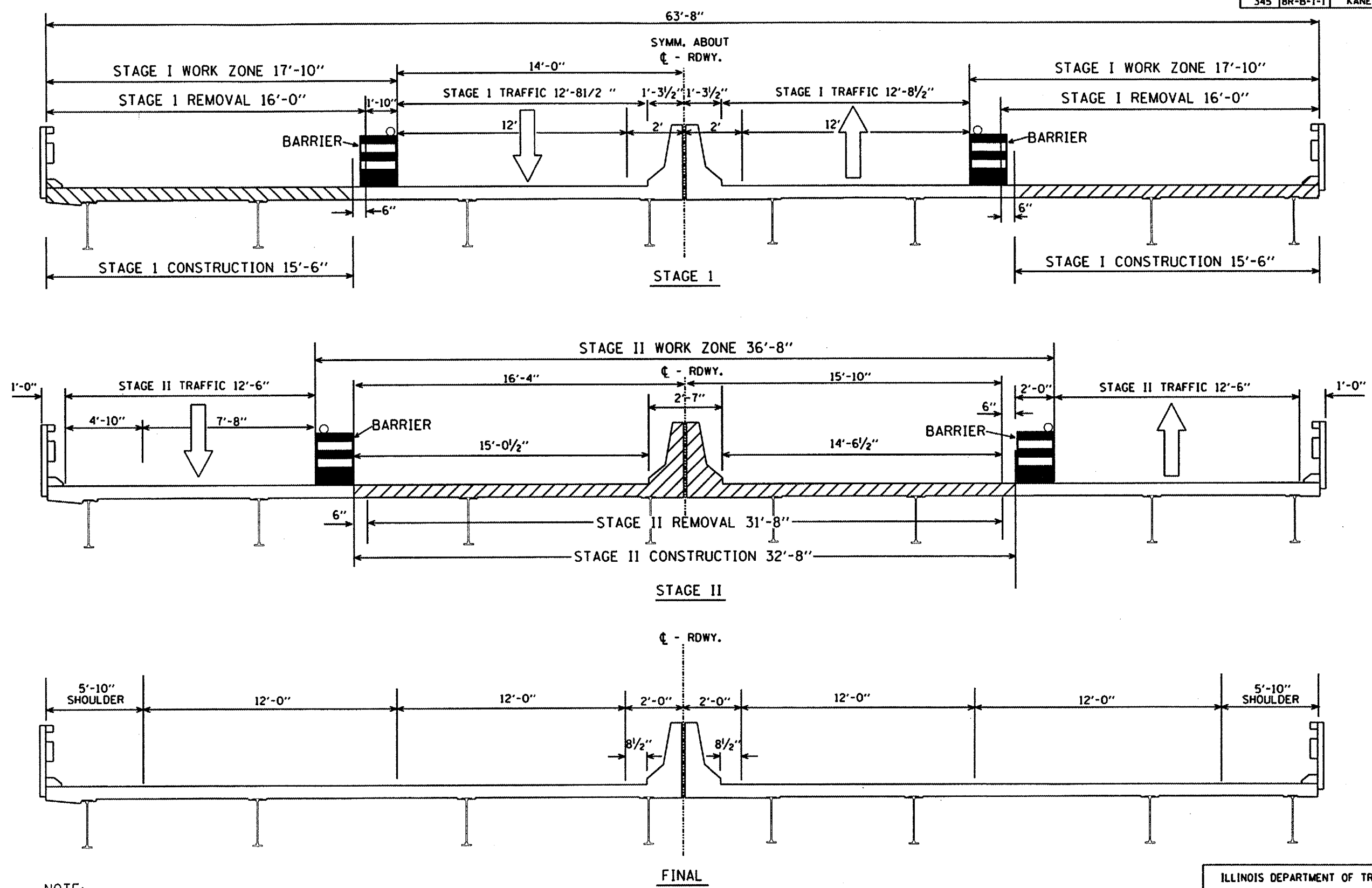
CONSTRUCTION CODE TYPE: SFTY - 2A			
			KANE CO.
CODE NO.	ITEMS	UNITS	TOTAL QUANTITIES
50102400	CONCRETE REMOVAL	CU YD	27.7
50300255	CONCRETE SUPERSTRUCTURE	CU YD	27.7
50800205	REINFORCEMENT BARS, EPOXY COATED	POUND	4760
67000400	ENGINEER'S FIELD OFFICE, TYPE A	CAL MO	2
67100100	MOBILIZATION	L SUM	1
70100320	TRAFFIC CONTROL AND PROTECTION, STANDARD 701422	L SUM	1
X0322467	TEMPORARY INFORMATION SIGNING FOR LANE CLOSURE	SQ FT	48
X7011420	TRAFFIC CONTROL AND PROTECTION, STANDARD 701411	L SUM	1
X7015000	CHANGEABLE MESSAGE SIGN	CAL MO	2
X0325294	PREFORMED JOINT STRIP SEAL	FOOT	184
Z0002600	BAR SPLICERS	EACH	108
Z0048665	RAILROAD PROTECTIVE LIABILITY INSURANCE	L SUM	1
X0325305	STRUCTURAL REPAIR OF CONCRETE (DEPTH EQUAL TO OR LESS THAN 5 INCHES)	SQ FT	534

ILLINOIS DEPARTMENT OF TRANSPORTATION

SUMMARY OF QUANTITIES

Rev1

FAP RTE.	SECTION	COUNTY	TOTAL SHEETS	SHEET NO.
345	BR-B-1-1	KANE	14	4



NOTE:

COVER CONFLICTING PAVEMENT MARKINGS WITH BLACK TYPE III TAPE, THE COST OF THE TYPE III TAPE AND ITS REMOVAL IS INCLUDED IN THE COST OF " TRAFFIC CONTROL & PROTECTION 701422"

REVISIONS	
NAME	DATE

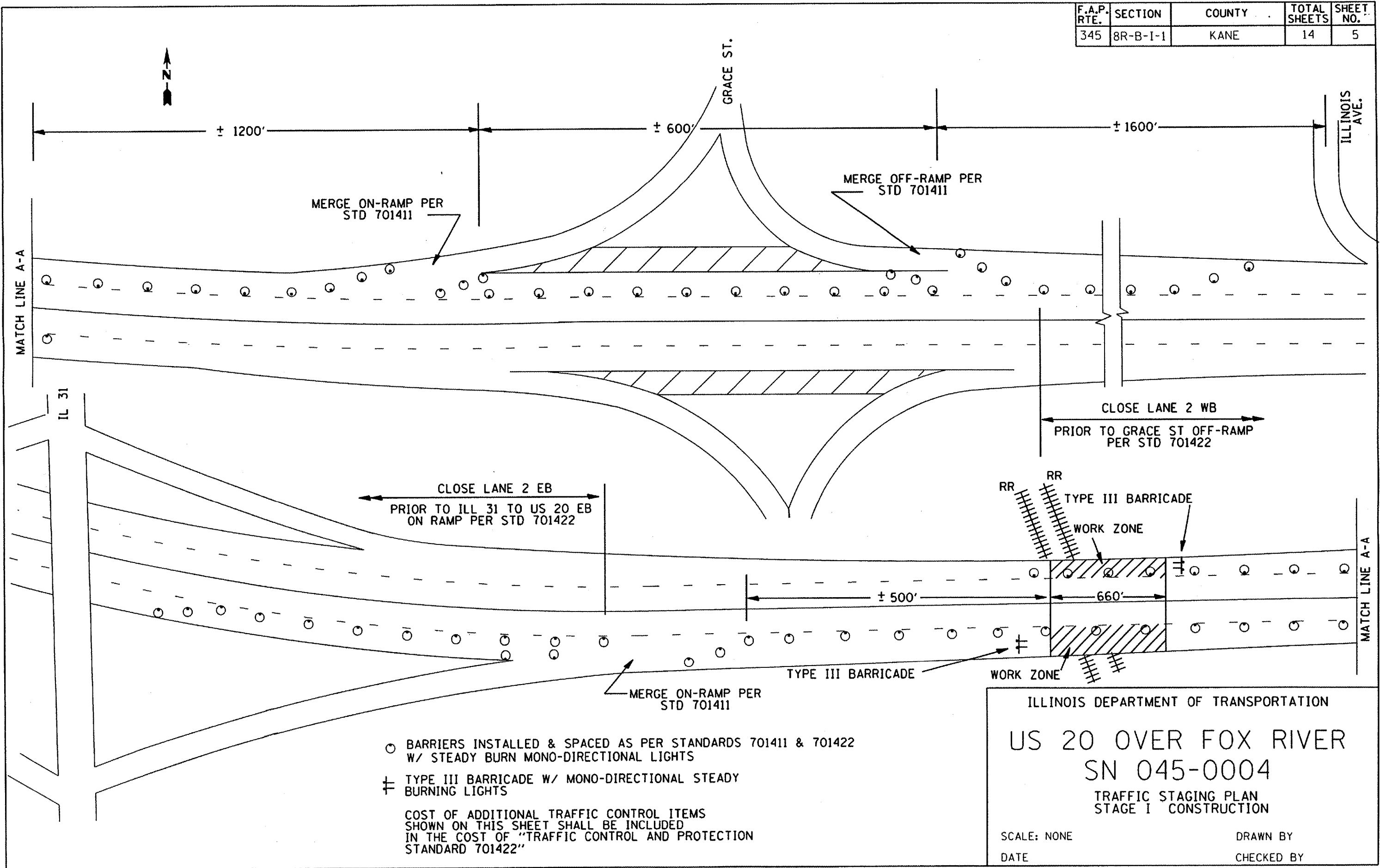
ILLINOIS DEPARTMENT OF TRANSPORTATION

TRAFFIC CONTROL STAGING PLANS

SCALE: NONE
 DATE: APRIL 27, 2004

DRAWN BY: T. FARMER
 CHECKED BY:

F.A.P. RTE.	SECTION	COUNTY	TOTAL SHEETS	SHEET NO.
345	8R-B-1-1	KANE	14	5



○ BARRIERS INSTALLED & SPACED AS PER STANDARDS 701411 & 701422
W/ STEADY BURN MONO-DIRECTIONAL LIGHTS

⊕ TYPE III BARRICADE W/ MONO-DIRECTIONAL STEADY
BURNING LIGHTS

COST OF ADDITIONAL TRAFFIC CONTROL ITEMS
SHOWN ON THIS SHEET SHALL BE INCLUDED
IN THE COST OF "TRAFFIC CONTROL AND PROTECTION
STANDARD 701422"

ILLINOIS DEPARTMENT OF TRANSPORTATION

US 20 OVER FOX RIVER
SN 045-0004

TRAFFIC STAGING PLAN
STAGE I CONSTRUCTION

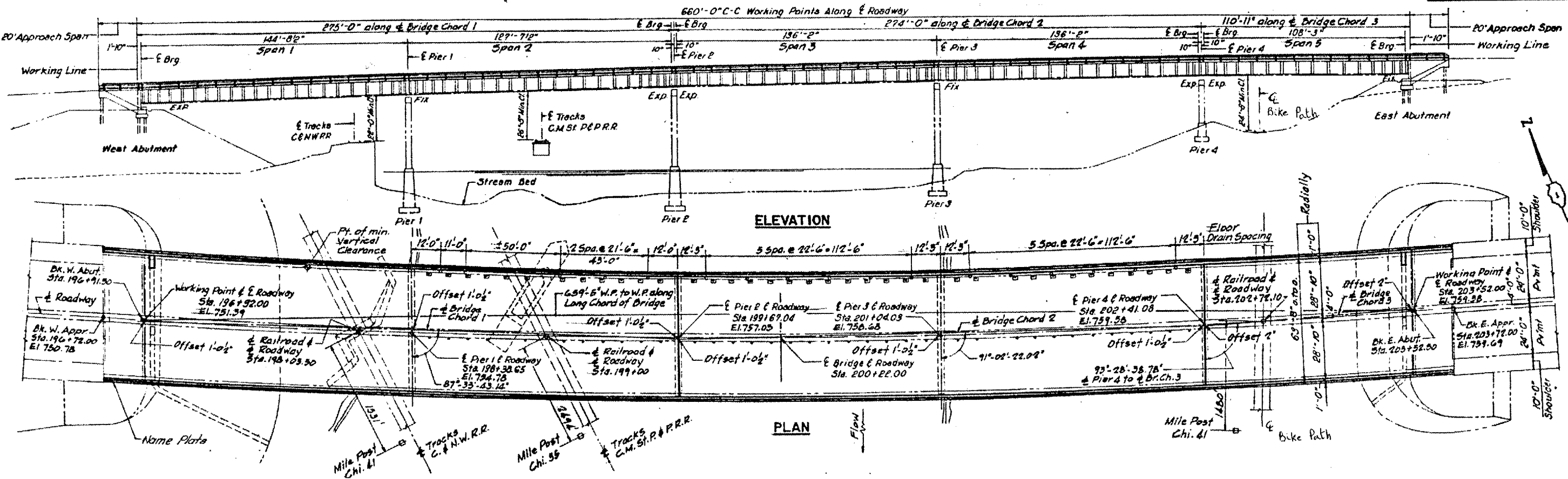
SCALE: NONE
DATE

DRAWN BY
CHECKED BY

ROUTE	SECTION	COUNTY	TOTAL SHEETS	SHEET NUMBER
FAP 345	8R-B-I-1	KANE	14	6

CONTRACT 62963

SHEET 1 OF 8

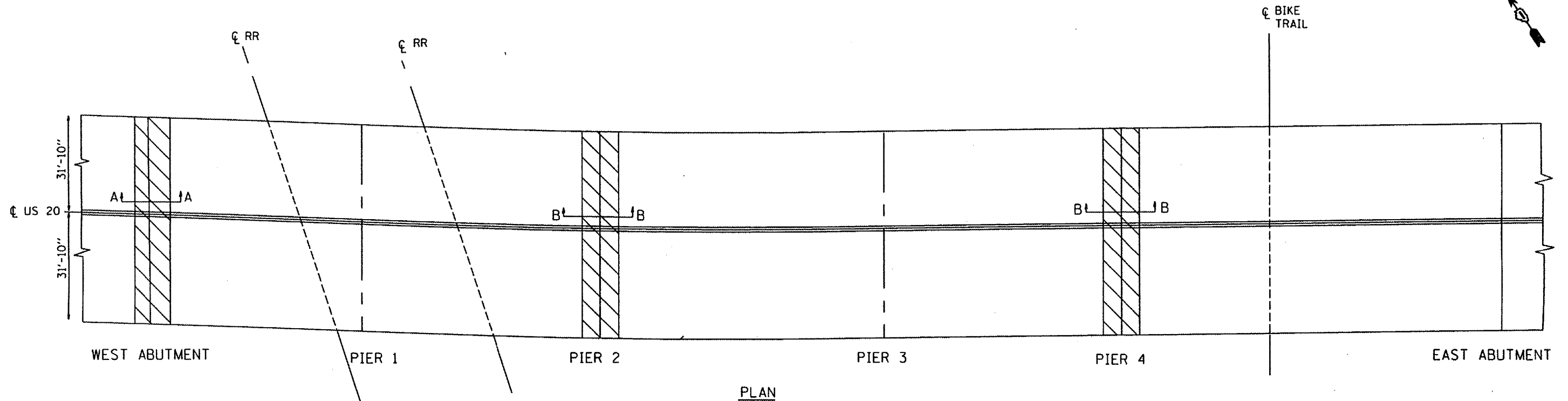


FOR INFORMATION ONLY

ILLINOIS DEPARTMENT OF TRANSPORTATION
**US 20 OVER FOX RIVER
 PLAN AND ELEVATION**
 SN: 045 - 0004

F.A.P. RTE.	SECTION	COUNTY	TOTAL SHEETS	SHEET NO.
345	8R-B-I-1	KANE	14	7

SHEET 2 OF 8



GENERAL NOTES:

PLAN DIMENSIONS AND DETAILS RELATIVE TO EXISTING STRUCTURE HAVE BEEN TAKEN FROM EXISTING PLANS AND ARE SUBJECT TO NOMINAL CONSTRUCTION VARIATIONS. IT SHALL BE THE CONTRACTOR'S RESPONSIBILITY TO VERIFY SUCH DIMENSIONS AND DETAILS IN THE FIELD AND MAKE NECESSARY APPROVED ADJUSTMENTS PRIOR TO CONSTRUCTION OR ORDERING OF MATERIALS. SUCH VARIATIONS SHALL NOT BE CAUSE FOR ADDITIONAL COMPENSATION FOR A CHARGE IN THE SCOPE OF THE WORK; HOWEVER THE CONTRACTOR WILL BE PAID FOR THE QUANTITY ACTUALLY FURNISHED AT THE UNIT PRICE BID FOR THE WORK.

FOR SECTIONS A-A & B-B SEE SHEETS SEE SHEET 3 & 4 OF 8



CONCRETE REMOVAL & CONCRETE SUPERSTRUCTURE (AT JOINTS)

PLOT DATE: 3/28/2006
 FILE NAME: c:\work\p06\021065\desig\p06.dgn
 PLOT SCALE: 1/8" = 1'-0"
 USER NAME: mshg

REVISIONS	
NAME	DATE

ILLINOIS DEPARTMENT OF TRANSPORTATION
 US 20 OVER FOX RIVER
 BRIDGE JOINT REPAIR

SCALE: VERT.
 HORIZ.
 DATE

DRAWN BY
 CHECKED BY

F.A.P. RTE.	SECTION	COUNTY	TOTAL SHEETS	SHEET NO.
345	8R-B-1-1	KANE	14	8

CONTRACT NO. 62963

SHEET 3 OF 8

NOTES:

Skew angle varies. Place "A(E)" bars parallel to the joint.

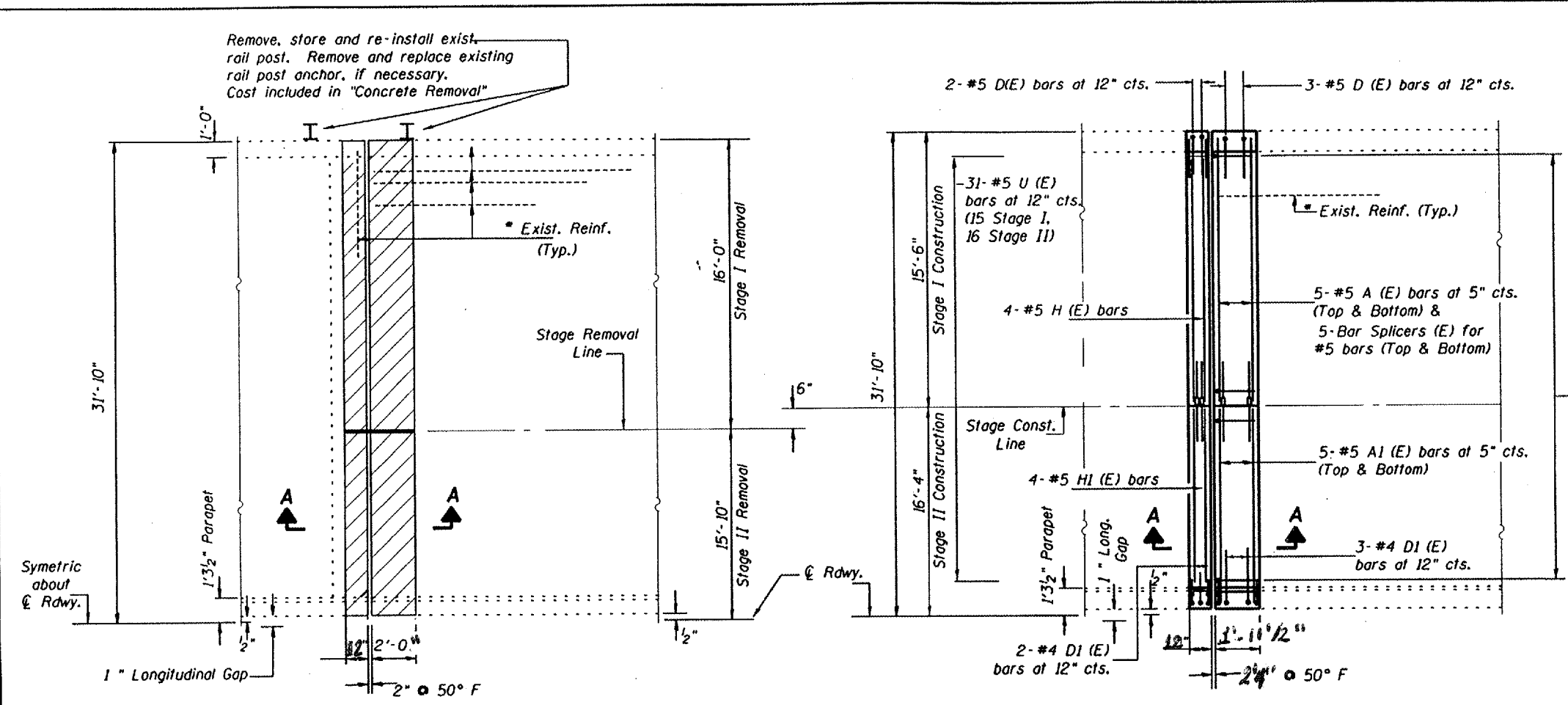
* Existing longitudinal reinforcement extending into the removal area shall be cleaned, straightened and incorporated into the new construction. Any reinforcement bars that are damaged during concrete removal shall be replaced with an approved bar splicer or anchorage system. Cost shall be included with Concrete Removal.

OPEN AREA SHALL BE PLATED WHEN WORKERS ARE NOT PRESENT. COST OF PLATE IS INCLUDED IN COST OF CONCRETE REMOVAL

BILL OF MATERIAL (ABUT.)

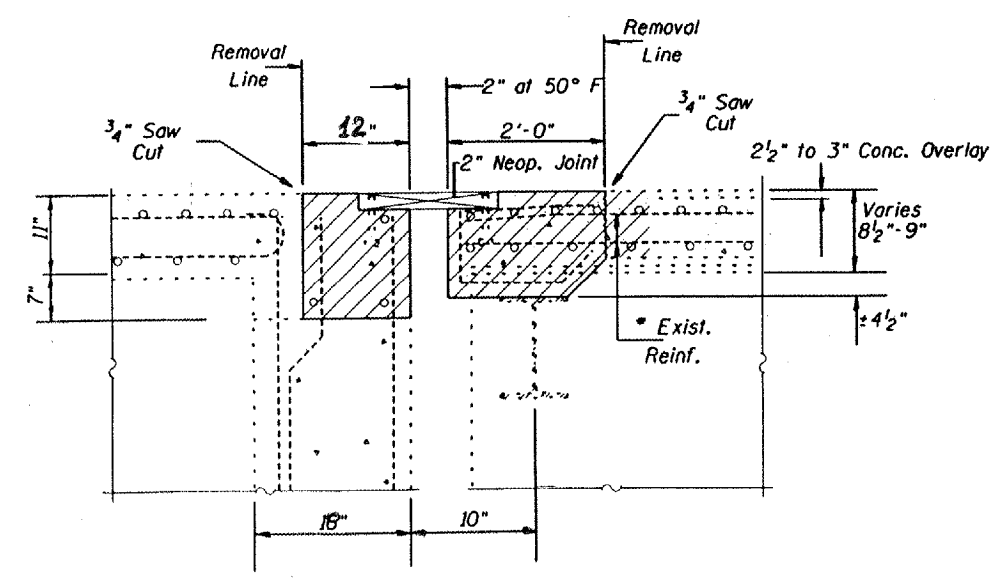
Concrete Removal	Cu. Yd.	8.2
Concrete Superstructure	Cu. Yd.	8.2
Reinforcement Bars, Epoxy Coated	Lbs.	1280
Bar Splicers	Each	28

Reinforcement bars designated (E) shall be epoxy coated.
For bar details and bar list see Sheet 5 of 8.

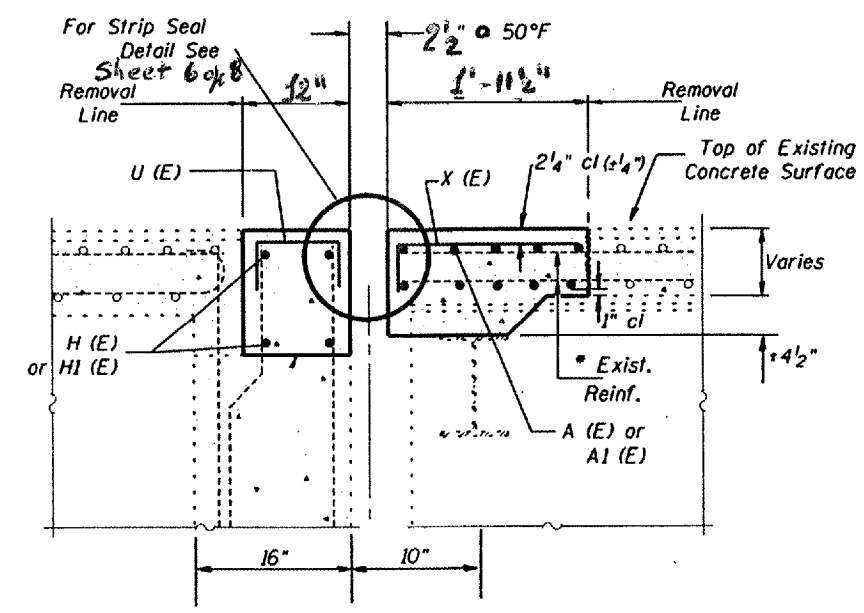


HALF PLAN SHOWING CONCRETE REMOVAL AT WEST ABUTMENT

HALF PLAN SHOWING CONCRETE REPLACEMENT AT WEST ABUTMENT



SECTION A-A (Existing)



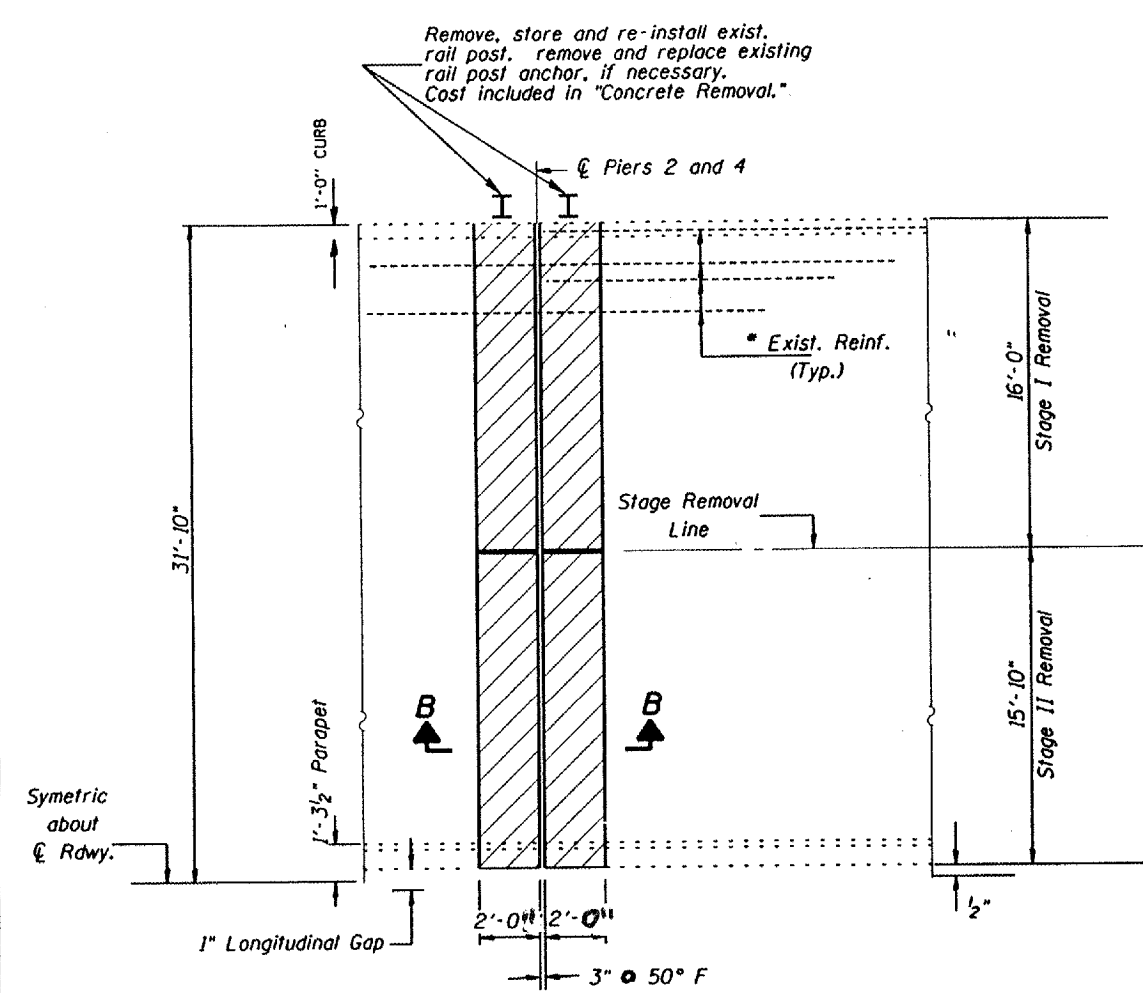
SECTION A-A (Proposed)

ILLINOIS DEPARTMENT OF TRANSPORTATION
US 20 OVER FOX RIVER
SN 045-0004
JOINT DETAILS
(West Abutments)
SCALE: NONE
DATE 3/1/2006
DRAWN BY
CHECKED BY

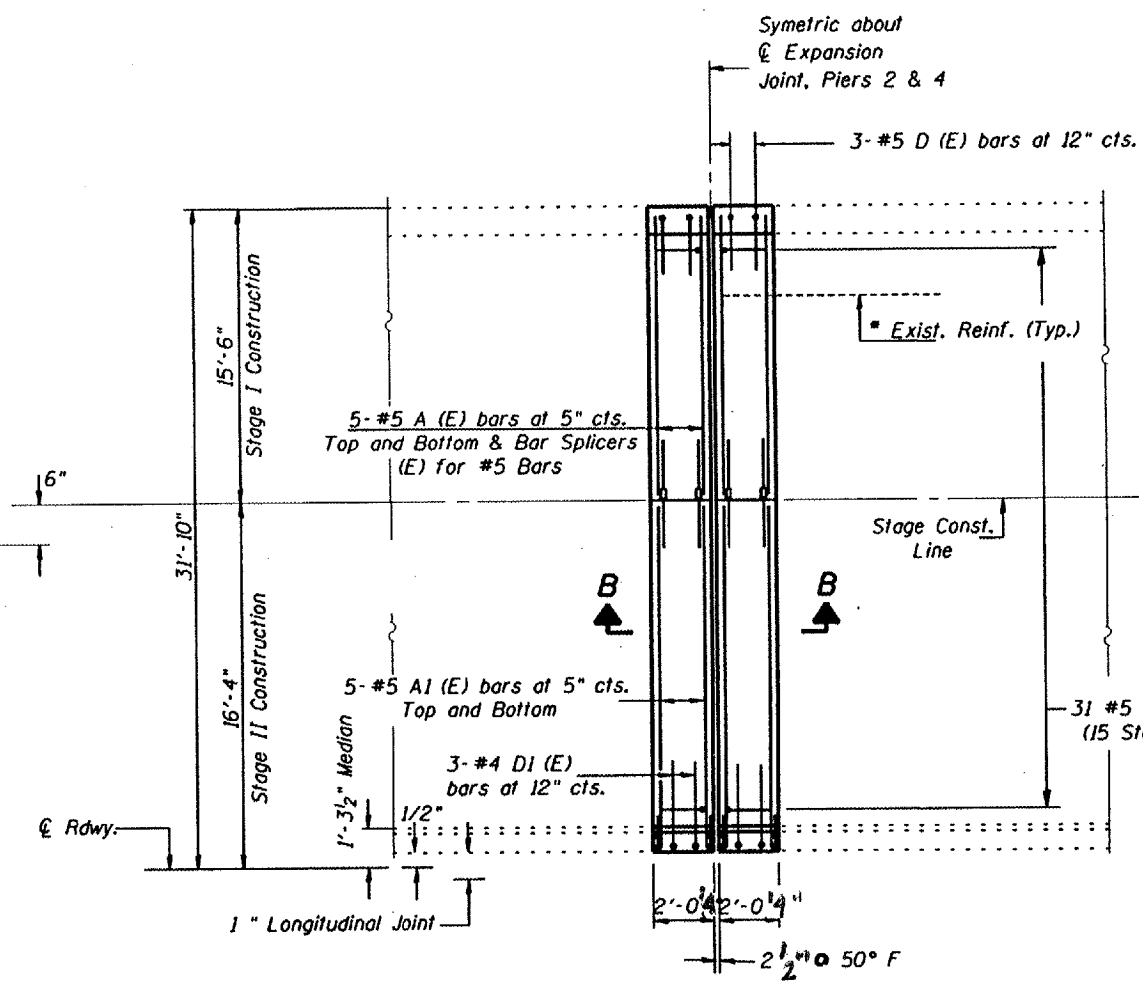
F.A.P. RTE.	SECTION	COUNTY	TOTAL SHEETS	SHEET NO.
345	8R-B-1-1	KANE	14	9

CONTRACT NO. 62963

SHEET 4 OF 8



HALF PLAN SHOWING CONCRETE REPLACEMENT AT PIER 2 AND 4



HALF PLAN SHOWING CONCRETE REPLACEMENT AT PIER 2 AND 4

NOTES:
Skew angle varies. Place "A (E)" bars parallel to the joint.

* Existing longitudinal reinforcement extending into the removal area shall be cleaned, straightened and incorporated into the new construction. Any reinforcement bars that are damaged during concrete removal shall be replaced with an approved bar splicer or anchorage system. Cost shall be included with Concrete Removal.

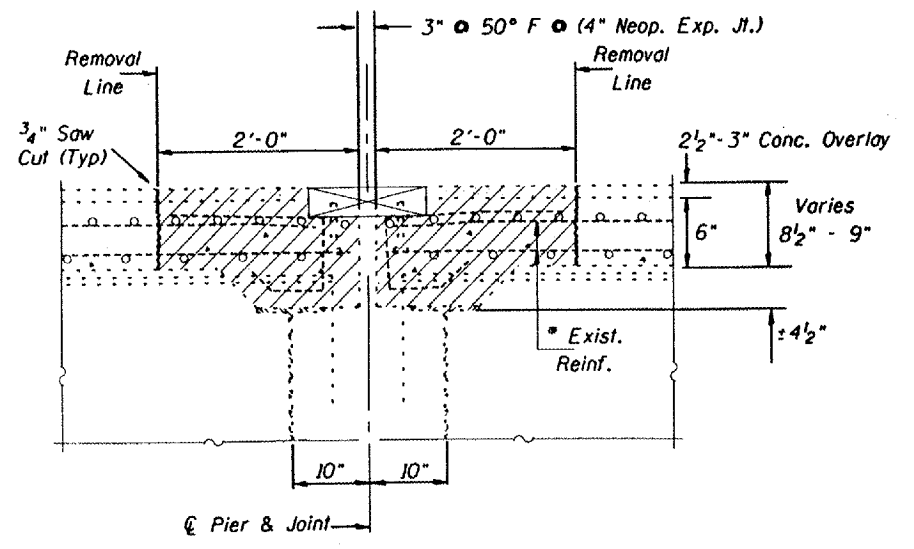
OPEN AREA SHALL BE PLATED WHEN WORKERS ARE NOT PRESENT. COST OF PLATE IS INCLUDED IN COST OF CONCRETE REMOVAL

BILL OF MATERIAL (2 PIERS)

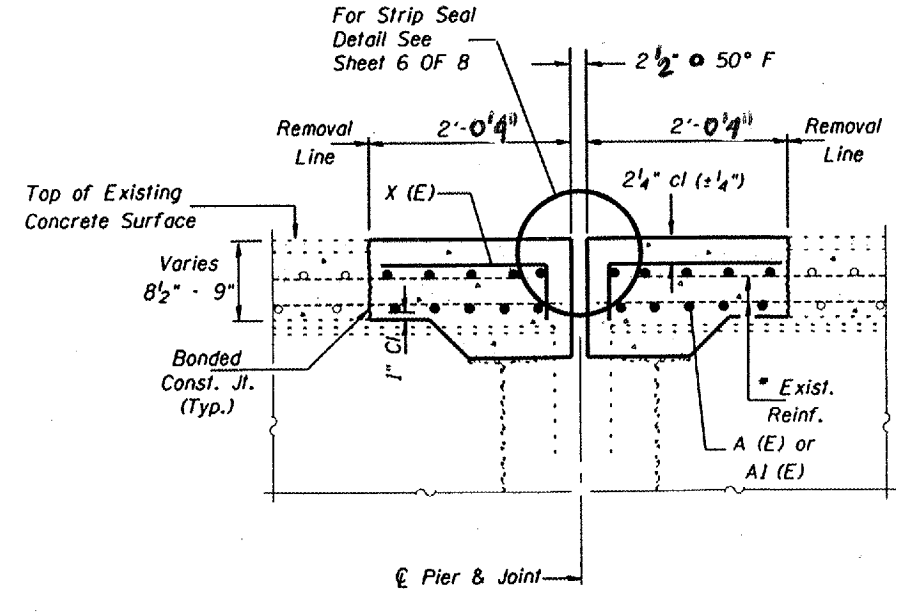
Concrete Removal	Cu. Yd.	19.5
Concrete Superstructure	Cu. Yd.	19.5
Reinforcement Bars, Epoxy Coated	Lbs.	3480
Bar Splicers	Each	80

Reinforcement bars designated (E) shall be epoxy coated.

For bar details and bar list see Sheet 5 of 8



SECTION B-B (Existing)



SECTION B-B (Proposed)

ILLINOIS DEPARTMENT OF TRANSPORTATION
US 20 OVER FOX RIVER
SN 045-0004
 JOINT DETAILS
 (Piers 2 & 4)

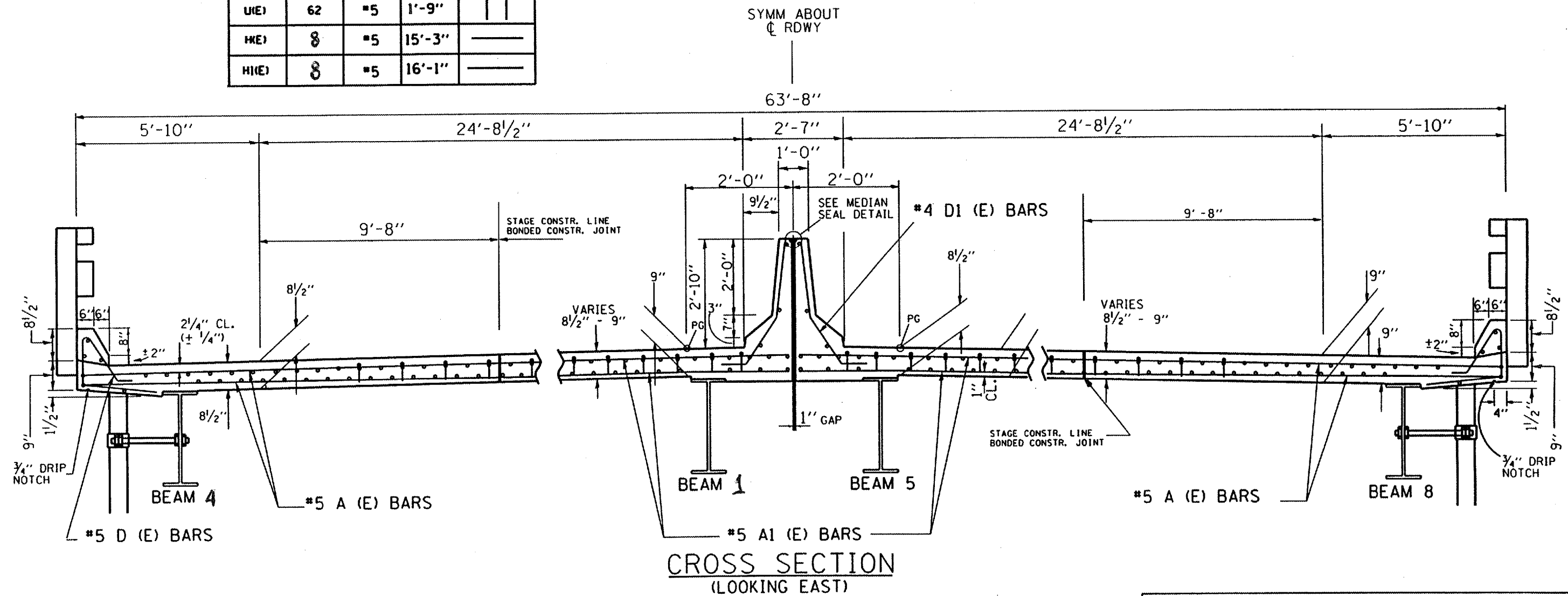
SCALE: NONE
 DATE
 DRAWN BY
 CHECKED BY

F.A.P. RTE.	SECTION	COUNTY	TOTAL SHEETS	SHEET NO.
345	8R-B-1-1	KANE	14	10

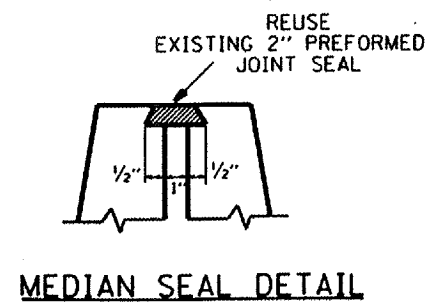
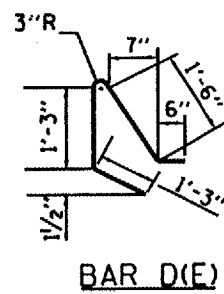
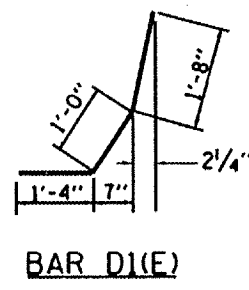
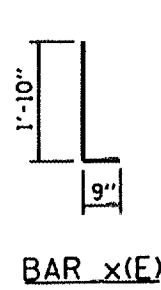
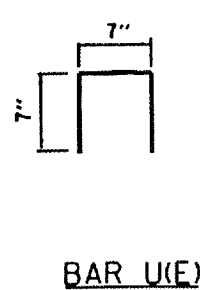
CONTRACT NO. 62923

SHEET 5 OF 8

BAR	NO	SIZE	LENGTH	SHAPE
A(E)	100	#5	15'-3"	—
A1(E)	100	#5	16'-1"	—
D(E)	34	#5	5'-3"	
D1(E)	34	#4	4'-0"	
X(E)	310	#5	2'-7"	
U(E)	62	#5	1'-9"	
H(E)	8	#5	15'-3"	—
H1(E)	8	#5	16'-1"	—



CROSS SECTION
(LOOKING EAST)



ILLINOIS DEPARTMENT OF TRANSPORTATION
US 20 OVER FOX RIVER
SN 045-0004
BILL OF REINFORCEMENT

SCALE: NONE
DATE

DRAWN BY
CHECKED BY

F.A.P. RTE.	SECTION	COUNTY	TOTAL SHEETS	SHEET NO.
345	8R-B-I-1	KANE	14	11

CONTRACT NO. 62963

SHEET 6 OF 8

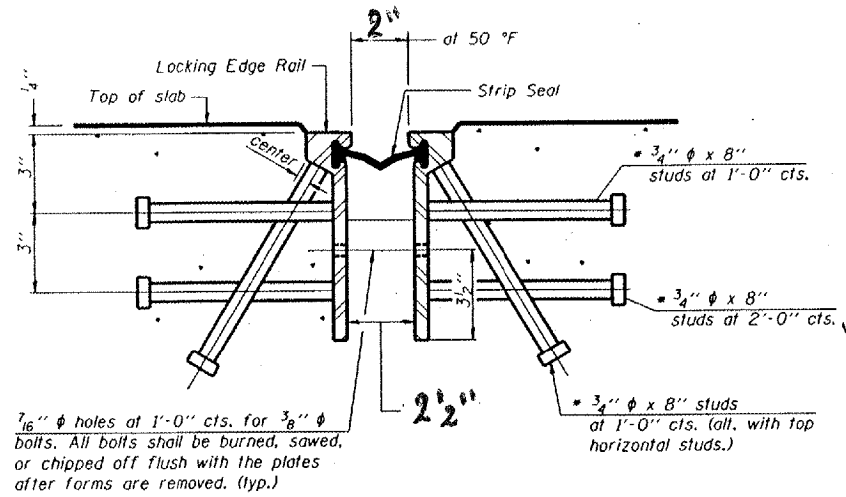
GENERAL NOTES

The strip seal shall be made continuous and shall have a minimum thickness of 1/4". The configuration of the strip seal shall match the configuration of the Locking Edge Rails.

The height and thickness of the Locking Edge Rails shown are minimum dimensions. The actual configuration of the Locking Edge Rails and matching strip seal may vary from manufacturer to manufacturer. Flanged edge rails will not be allowed.

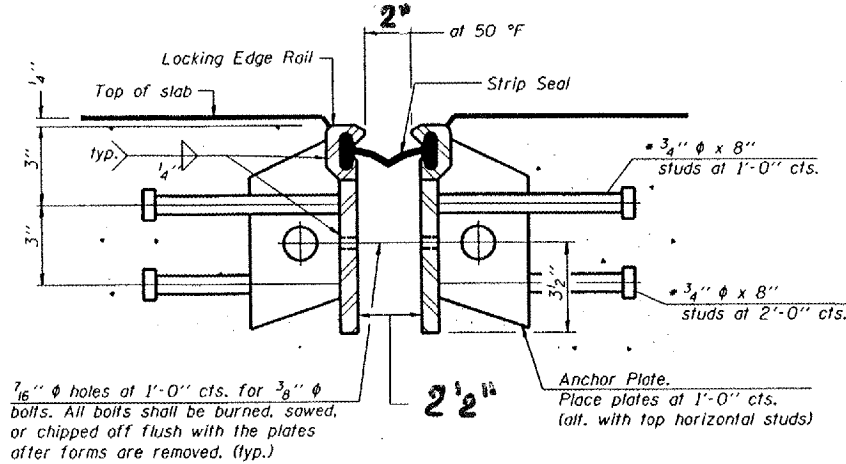
Locking Edge Rails may be spliced at slope discontinuities and stage construction joints.

The manufacturer's recommended installation methods shall be followed.



SECTION THRU ROLLED RAIL EXP. JOINT

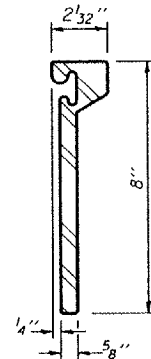
(916 Studs Required)



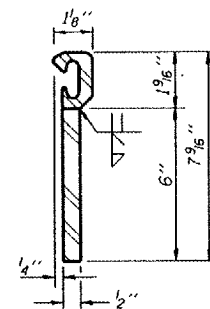
SECTION THRU WELDED RAIL EXP. JOINT

(550 Studs Required)
(366 Anchor Plates Required)

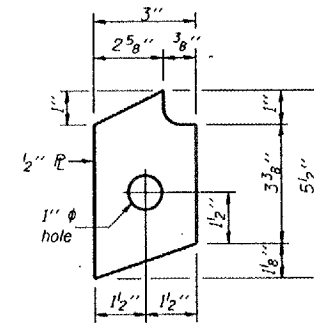
* Granular or solid flux filled headed studs conforming to Article 1006.32 of the Std. Specs., automatically end welded.



ROLLED (EXTRUDED) RAIL



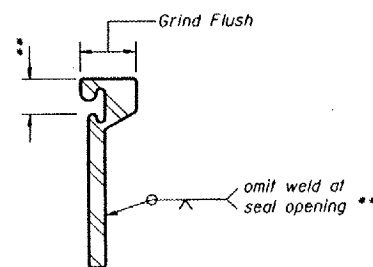
WELDED RAIL



ANCHOR PLATE

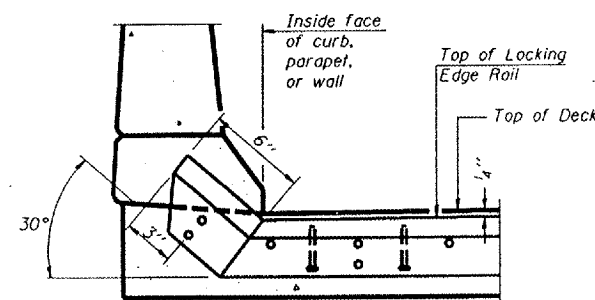
(for welded rail)

LOCKING EDGE RAILS

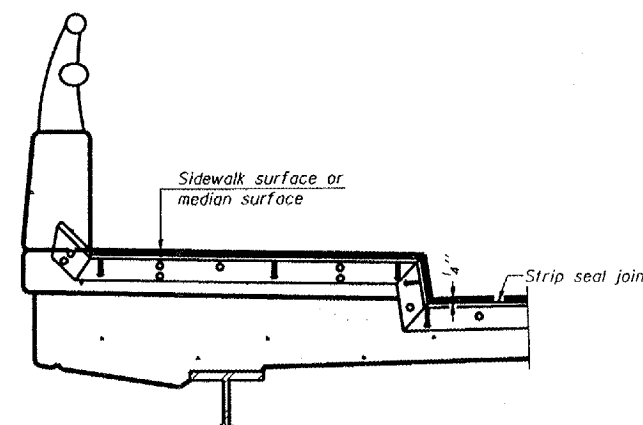


LOCKING EDGE RAIL SPLICE

The inside of the locking edge rail groove shall be free of weld residue.



AT CURB, PARAPET, OR WALL



AT SIDEWALK OR MEDIAN*

* Shorter plates with a single row of studs at 12" centers may be necessary on medians which are shallower than 9". See manufacturer's recommendation.

TYPICAL END TREATMENTS

MODIFIED EJ-BJS

10-22-04

ILLINOIS DEPARTMENT OF TRANSPORTATION

BRIDGE JOINT SYSTEM (EXPANSION) STRIP SEAL DETAILS

SCALE: NONE

DATE

DRAWN BY

CHECKED BY

F.A.P. RTE.	SECTION	COUNTY	TOTAL SHEETS	SHEET NO.
345	8R-B-I-1	KANE	14	12

NOTES

Bar splicer assemblies shall be of an approved type and shall develop in tension at least 125 percent of the yield strength of the lapped reinforcement bars.
 Splicer rods shall be of minimum 60 ksi yield strength, threaded or coiled full length.
 All reinforcement bars shall be lapped and tied to the splicer rods or dowel bars.
 Bar splicer assemblies shall be epoxy coated according to the requirements for reinforcement bars.
 Other systems of similar design may be submitted to the Engineer for approval. Approval shall be based on certified test results from an approved testing laboratory that the proposed bar splicer assembly satisfies the following requirements:

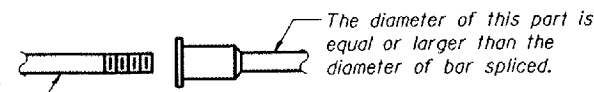
- ① Minimum Capacity (Tension in kips) = $1.25 \times f_y \times A_1$
- ② Minimum *Pull-out Strength (Tension in kips) = $1.25 \times f_{s_{allow}} \times A_1$

Where f_y = Yield strength of lapped reinforcement bars in ksi.
 $f_{s_{allow}}$ = Allowable tensile stress in lapped reinforcement bars in ksi (Service Load)
 A_1 = Tensile stress area of lapped reinforcement bars.
 * = 28 day concrete

BAR SPLICER ASSEMBLIES			
Bar Size to be Spliced	Splicer Rod or Dowel Bar Length	Strength Requirements	
		Min. Capacity kips - tension	Min. Pull-Out Strength kips - tension
#5	2'-0"	23.0	9.2
#6	2'-7"	33.1	13.3
#7	3'-5"	45.1	18.0
#8	4'-6"	58.9	23.6

Bar splicer assemblies shall be according to Section 508 of the Standard Specifications, except as noted. The furnishing and installation of bar splicer assemblies will be measured and paid for at the contract unit price each for "BAR SPLICERS."

The diameter of this part is the same as the diameter of the bar spliced.



ROLLED THREAD DOWEL BAR

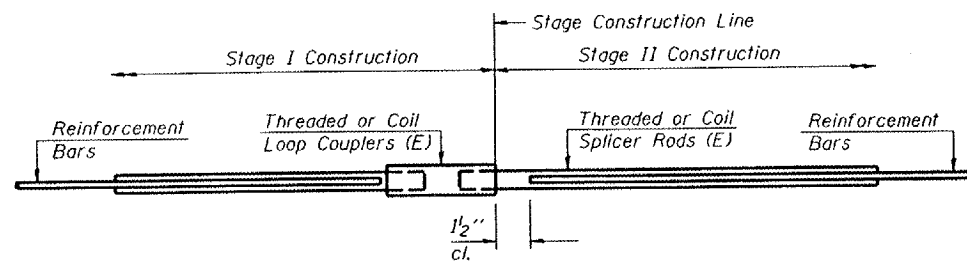


**** ONE PIECE**

Wire Connector



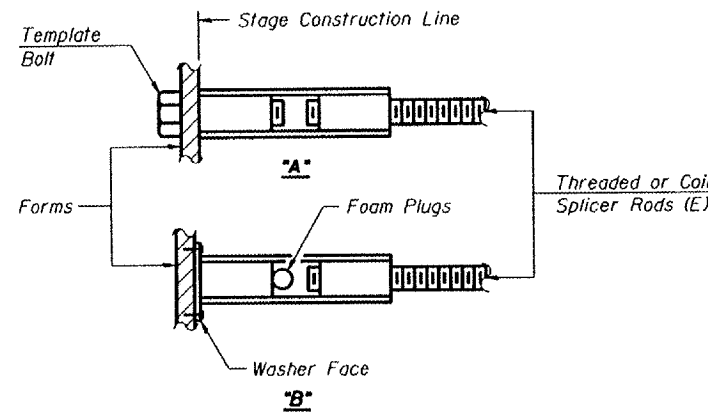
WELDED SECTIONS



SPLICER DETAIL

BAR SPLICER ASSEMBLY ALTERNATIVES

** Heavy Hex Nuts conforming to ASTM A 563, Grade C, D or DH may be used.



INSTALLATION AND SETTING METHODS

"A" : Set bar splicer assembly by means of a template bolt.
 "B" : Set bar splicer assembly by nailing to wood forms or cementing to steel forms.
 (E) : Indicates epoxy coating.

Bar Size	No. Assemblies Required	Location
#5	100	DECK
#5	8	SUBSTRUCTURE

BSD-1 4 30-99

ILLINOIS DEPARTMENT OF TRANSPORTATION

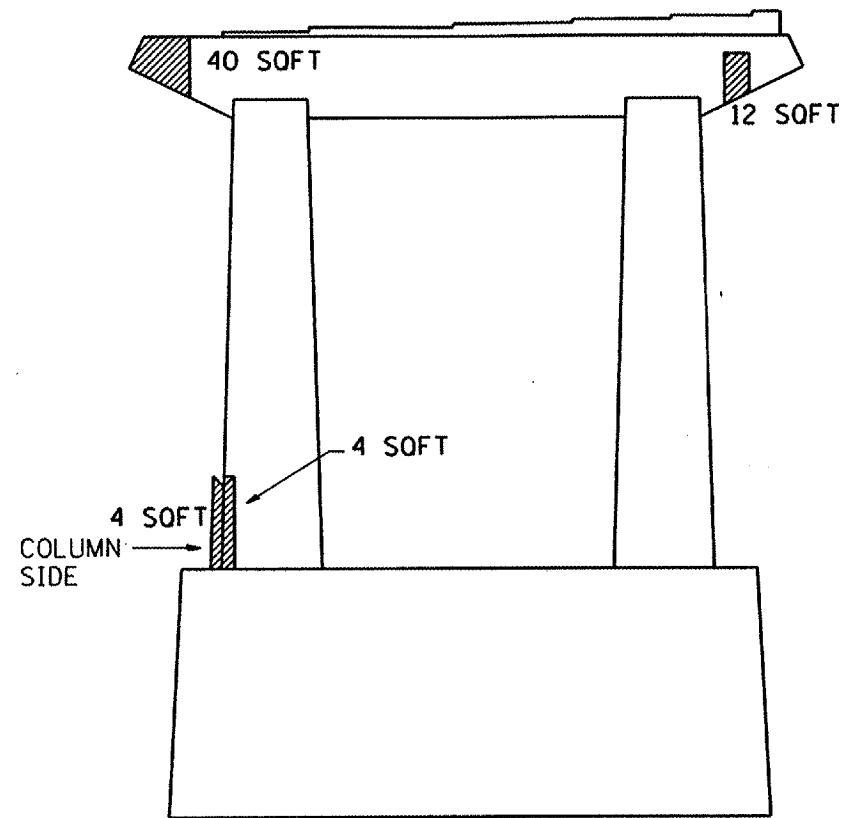
BAR SPLICER ASSEMBLY DETAILS

SCALE: VERT.
 HORIZ.
 DATE 3/1/2006

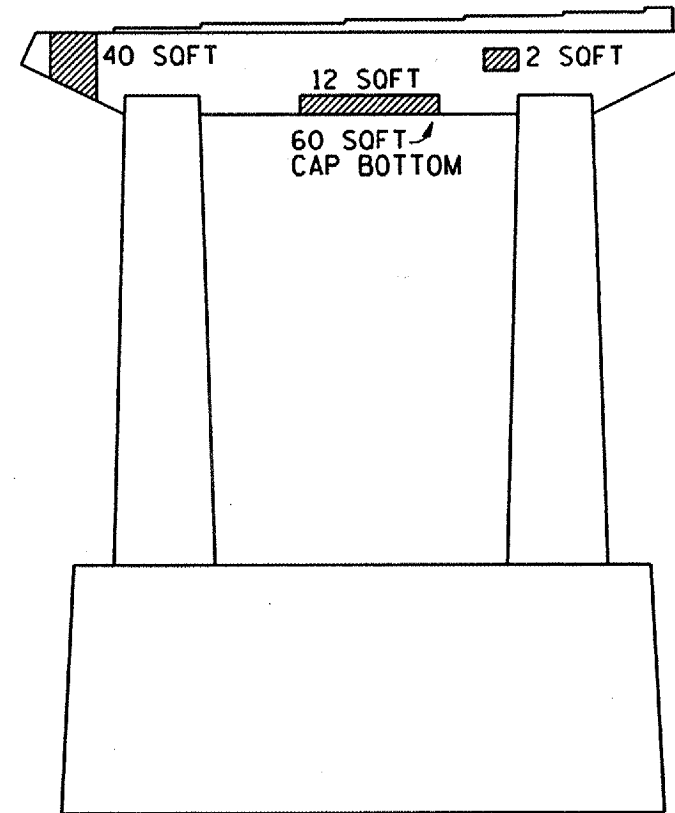
DRAWN BY
 CHECKED BY

F.A.P. RTE.	SECTION	COUNTY	TOTAL SHEETS	SHEET NO.
345	8R-B-I-1	KANE	14	13

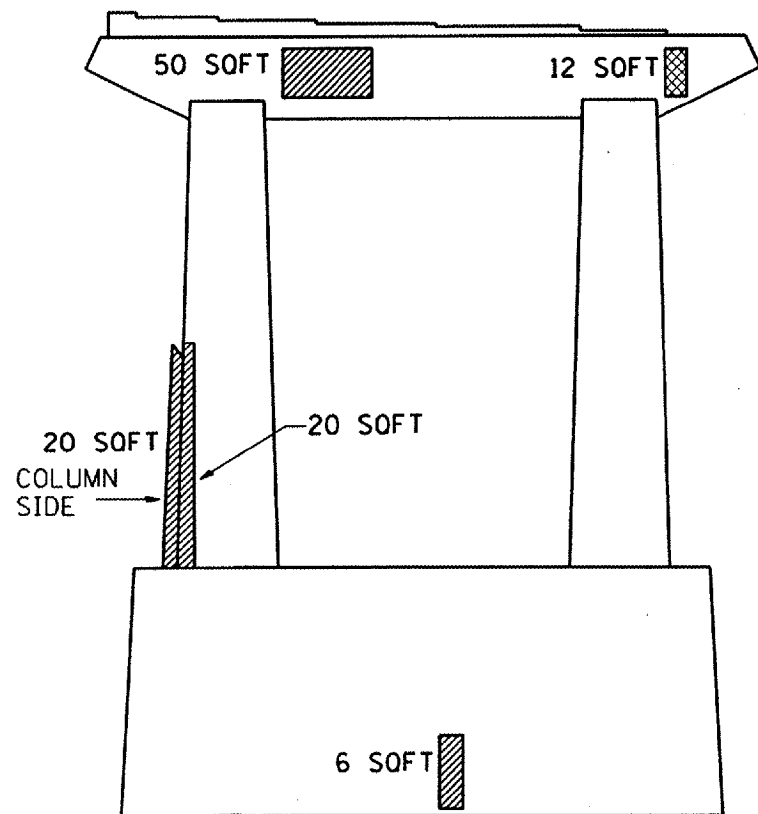
SHEET 8 OF 8



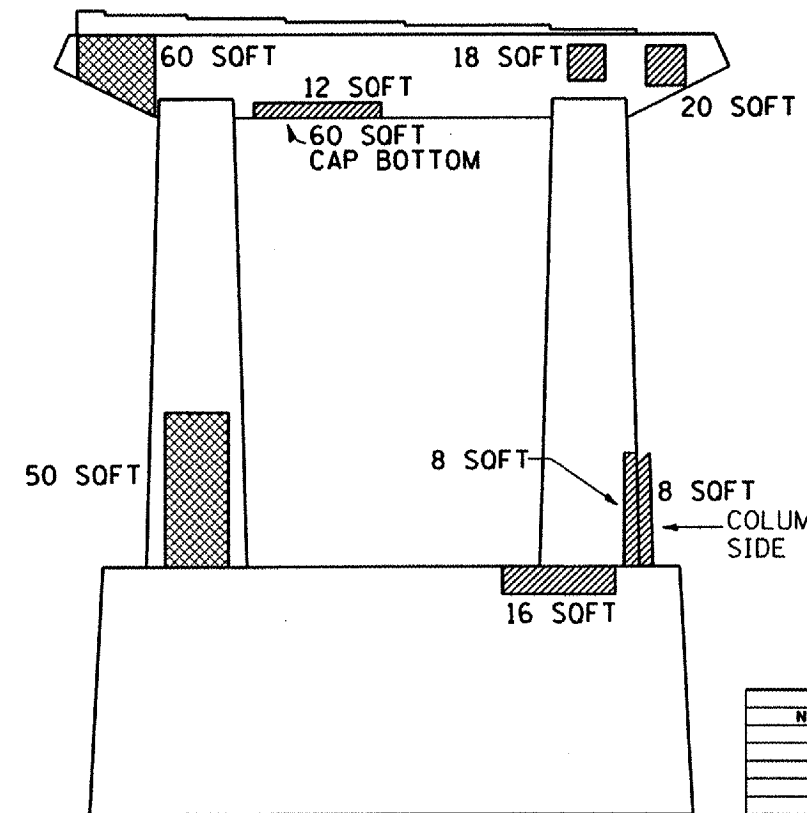
PIER #2
(WEST FACE)



PIER #4
(WEST FACE)



PIER #2
(EAST FACE)



PIER #4
(EAST FACE)

BILL OF MATERIAL

STRUCTURAL REPAIR OF CONCRETE	SO FT	534

AREAS DESIGNATED FOR STRUCTURAL REPAIR OF CONCRETE



SPALLS < 5"



SPALLS WITH EXPOSED REBAR < 5"

PLOT DATE: 2/28/2006
 FILE NAME: c:\projects\21885\design\p
 SCALE: 1/4" = 1'-0"
 USER NAME: bkg

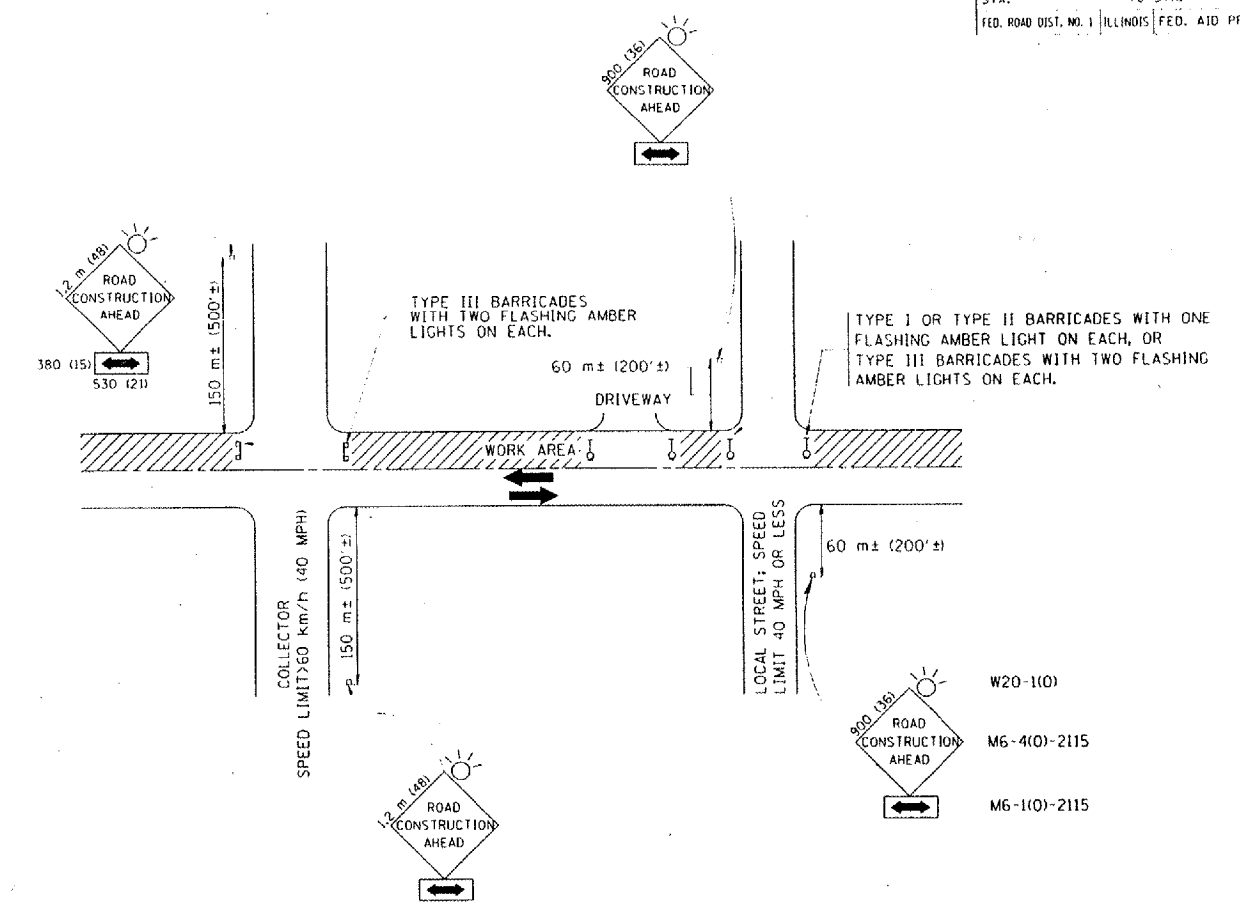
REVISIONS	
NAME	DATE

ILLINOIS DEPARTMENT OF TRANSPORTATION
 US 20 OVER FOX RIVER
 PIER REPAIRS
 SN 045-0004

SCALE: VERT.
 HORIZ.
 DATE

DRAWN BY
 CHECKED BY

F.A.P. R.T.E.	SECTION	COUNTY	TOTAL SHEETS	SHEET NO.
345	8R-B-I-1	Kane	14	14
STA.	TO STA.			
FED. ROAD DIST. NO. 1 ILLINOIS FED. AID PROJECT				



TRAFFIC CONTROL AND PROTECTION FOR SIDE ROADS, INTERSECTIONS, AND DRIVEWAYS

NOTES:

A. FOR NO LANE RESTRICTION ON THE SIDE ROAD OR DRIVEWAYS

- SIDE ROAD WITH A SPEED LIMIT OF 60 km/h (40 MPH) OR LESS AS SHOWN ON THE DRAWING AND AS DIRECTED BY THE ENGINEER:
 - ONE ROAD CONSTRUCTION AHEAD SIGN 900x360 (36x36) WITH A FLASHER AND FLAG MOUNTED ON IT APPROXIMATELY 60 m (200') IN ADVANCE OF THE MAIN ROUTE.
 - THE CLOSED PORTION OF THE MAIN ROUTE SHALL BE PROTECTED BY BLOCKING WITH TYPE I, TYPE II OR TYPE III BARRICADES, 1/3 OF THE CROSS SECTION OF THE CLOSED PORTION.
- SIDE ROAD WITH A SPEED LIMIT GREATER THAN 60 km/h (40 MPH) AS SHOWN ON THE DRAWING AND AS DIRECTED BY THE ENGINEER:
 - ONE ROAD CONSTRUCTION AHEAD SIGN 1.2 m x 1.2 m (48x48) WITH A FLASHER MOUNTED ON IT APPROXIMATELY 150 m (500') IN ADVANCE OF THE MAIN ROUTE.
 - THE CLOSED PORTION OF THE MAIN ROUTE SHALL BE PROTECTED BY BLOCKING WITH TYPE III BARRICADES, 1/2 OF THE CROSS SECTION OF THE CLOSED PORTION.
- WHEN THE SIDE ROAD LIES BETWEEN THE BEGINNING OF THE MAINLINE SIGNING AND THE WORK ZONE, A SINGLE HEADED ARROW (M6-1) SHALL BE USED IN LIEU OF THE DOUBLE HEADED ARROW (M6-4).

B. FOR A LANE CLOSURE ON A SIDE ROAD OR DRIVEWAY:

USE APPLICABLE PORTIONS OF THE TYPICAL APPLICATION OF TRAFFIC CONTROL DEVICES (STD. 701501, STD. 701606 OR THE APPROPRIATE STANDARD). THE SPACING OF SIGNS AND BARRICADES SHALL BE ADJUSTED FOR FIELD CONDITIONS AS DIRECTED BY THE ENGINEER. THE DIRECTIONAL ARROW SHALL BE COVERED OR REMOVED WHEN NO LONGER CONSISTENT WITH THE SIDE ROAD LANE CLOSURE.

C. ADVANCE WARNING SIGNS ARE TO BE OMITTED ON DRIVEWAY UNLESS OTHERWISE NOTED.

D. THE TRAFFIC CONTROL AND PROTECTION FOR SIDE ROADS, INTERSECTIONS, AND DRIVEWAYS SHALL BE INCIDENTAL TO THE COST OF SPECIFIED TRAFFIC CONTROL STANDARDS OR ITEMS.

REVISIONS	
NAME	DATE
LHA	6/89
T. RAMMACHER	09/08/94
J. OBERLE	10/18/95
A. HOUSEH	03/06/96
A. HOUSEH	10/15/96
T. RAMMACHER	01/06/00

ILLINOIS DEPARTMENT OF TRANSPORTATION
 TRAFFIC CONTROL AND PROTECTION
 FOR
 SIDE ROADS, INTERSECTIONS, AND
 DRIVEWAYS

SCALE: VERT. _____
 HORIZ. _____
 DATE: 10/18/2002
 DRAWN BY _____
 CHECKED BY _____
 TC 10