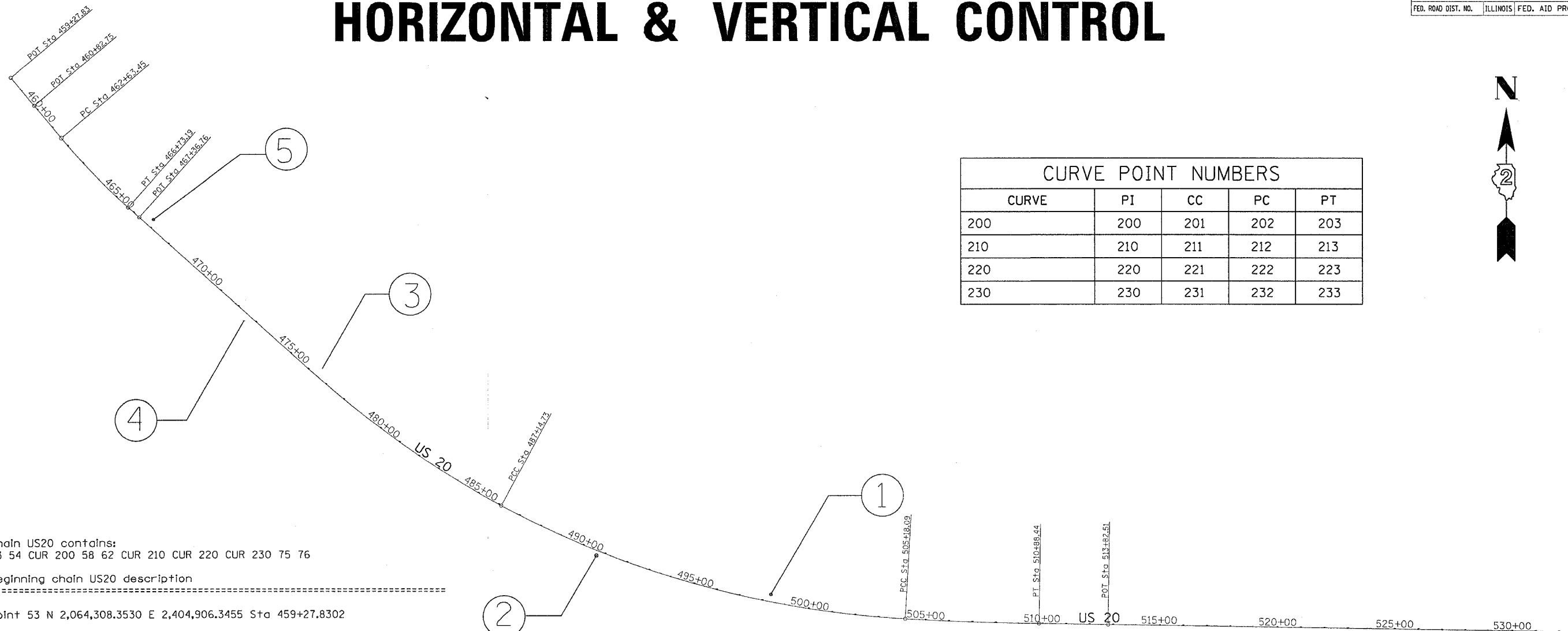


F.A.P. RTE.	SECTION	COUNTY	TOTAL SHEETS	SHEET NO.
301	21T	STEPHENSON	49	8
STA.		TO STA.		
FED. ROAD DIST. NO.		ILLINOIS	FED. AID PROJECT	

# HORIZONTAL & VERTICAL CONTROL



CURVE	PI	CC	PC	PT
200	200	201	202	203
210	210	211	212	213
220	220	221	222	223
230	230	231	232	233

Chain US20 contains:  
53 54 CUR 200 58 62 CUR 210 CUR 220 CUR 230 75 76

Beginning chain US20 description

Point 53 N 2,064,308.3530 E 2,404,906.3455 Sta 459+27.8302

COURSE FROM 53 TO 54 140° 04' 10.578" DIST 154.9194'

Point 54 N 2,064,189.5570 E 2,405,005.7815 Sta 460+82.7496

COURSE FROM 54 TO PC 200 140° 04' 10.578" DIST 180.6965'

Curve Data

**Curve 200**  
P.I. Station 464+68.6680 N 2,063,893.6252 E 2,405,253.4858  
DELTA = 8° 11' 40.115" (LT)  
DEGREE = 1° 59' 59.646"  
Tangent = 205.2219'  
Length = 409.7440'  
Radius = 2,864.9300'  
External = 7.3409'  
Long Chord = 409.3949'  
Mid. Ord. = 7.3221'  
P.C. Station 462+63.4461 N 2,064,050.9944 E 2,405,121.7627  
P.T. Station 466+73.1901 N 2,063,756.6376 E 2,405,406.2943  
C.C. N 2,065,889.8684 E 2,407,318.6620

COURSE FROM PT 200 TO 58 131° 52' 30.463" DIST 63.5745'

Point 58 N 2,063,714.2010 E 2,405,453.6320 Sta 467+36.7646

COURSE FROM 58 TO 62 131° 52' 30.463" DIST 865.4597'

Point 62 N 2,063,136.4985 E 2,406,098.0545 Sta 476+02.2243

COURSE FROM 62 TO PC 210 131° 52' 30.463" DIST 139.8292'

Curve Data

**Curve 210**  
P.I. Station 482+30.6089 N 2,062,717.0459 E 2,406,565.9505  
DELTA = 13° 21' 56.921" (LT)  
DEGREE = 1° 22' 26.862"  
Tangent = 488.5554'  
Length = 972.6756'  
Radius = 4,169.6091'  
External = 28.5246'  
Long Chord = 970.4717'  
Mid. Ord. = 28.3308'  
P.C. Station 477+42.0535 N 2,063,043.1612 E 2,406,202.1715  
P.T. Station 487+14.7292 N 2,062,483.8576 E 2,406,995.2634  
C.C. N 2,066,147.8579 E 2,408,985.4247

Curve Data

**Curve 220**  
P.I. Station 496+31.3045 N 2,062,046.3747 E 2,407,800.6943  
DELTA = 25° 15' 39.786" (LT)  
DEGREE = 1° 24' 02.798"  
Tangent = 916.5753'  
Length = 1,803.3596'  
Radius = 4,090.2847'  
External = 101.4380'  
Long Chord = 1,788.7891'  
Mid. Ord. = 98.9832'  
P.C. Station 487+14.7292 N 2,062,483.8576 E 2,406,995.2634  
P.T. Station 505+18.0887 N 2,061,994.4392 E 2,408,715.7970  
C.C. N 2,066,078.1524 E 2,408,947.5631

Curve Data

**Curve 230**  
P.I. Station 508+03.3040 N 2,061,978.2782 E 2,409,000.5541  
DELTA = 2° 22' 45.352" (LT)  
DEGREE = 0° 25' 01.775"  
Tangent = 285.2153'  
Length = 570.3486'  
Radius = 13,734.7346'  
External = 2.9611'  
Long Chord = 570.3076'  
Mid. Ord. = 2.9604'  
P.C. Station 505+18.0887 N 2,061,994.4392 E 2,408,715.7970  
P.T. Station 510+88.4373 N 2,061,973.9525 E 2,409,285.7366  
C.C. N 2,075,707.1074 E 2,409,494.0423

COURSE FROM PT 230 TO 75 90° 52' 08.403" DIST 294.0722'

Point 75 N 2,061,969.4925 E 2,409,579.7750 Sta 513+82.5096

COURSE FROM 75 TO 76 90° 52' 08.404" DIST 1,996.5256'

Point 76 N 2,061,939.2125 E 2,411,576.0710 Sta 533+79.0352

Ending chain US20 description

PLOT DATE = Fri Sep 02 14:02:51 2005  
 FILE NAME = c:\projects\204\903\cd4\903\hvc.dwg  
 PLOT SCALE = 220.8000' / IN.  
 USER NAME = duncant6