

STATE OF ILLINOIS
DEPARTMENT OF TRANSPORTATION

ROUTE NO.	SECTION	COUNTY	TOTAL SHEETS	SHEET NO.	SHEET NO. 12
FAP 301	28BR-1	JO DAVIESS	53	20	27 SHEETS
FED. ROAD DIST. NO. 7	ILLINOIS	FED. AID PROJECT			

Contract # 64A49

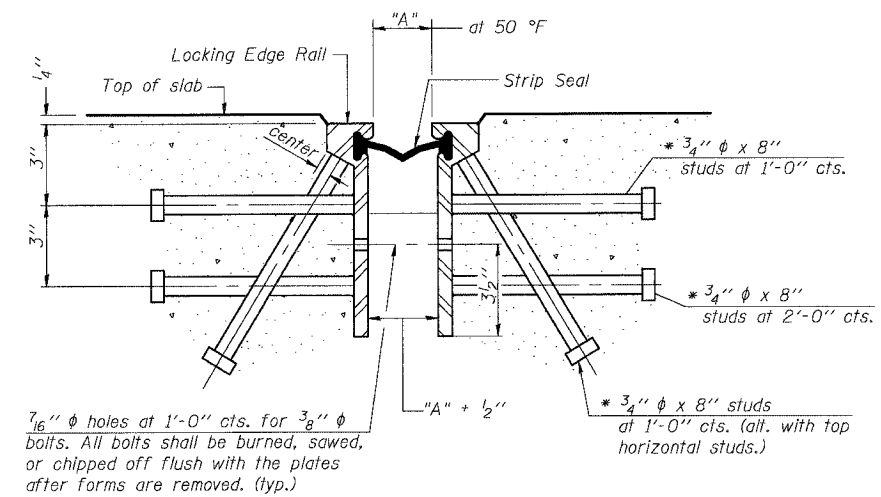
GENERAL NOTES

The strip seal shall be made continuous and shall have a minimum thickness of 1/4". The configuration of the strip seal shall match the configuration of the Locking Edge Rails.

The height and thickness of the Locking Edge Rails shown are minimum dimensions. The actual configuration of the Locking Edge Rails and matching strip seal may vary from manufacturer to manufacturer. Flanged edge rails will not be allowed.

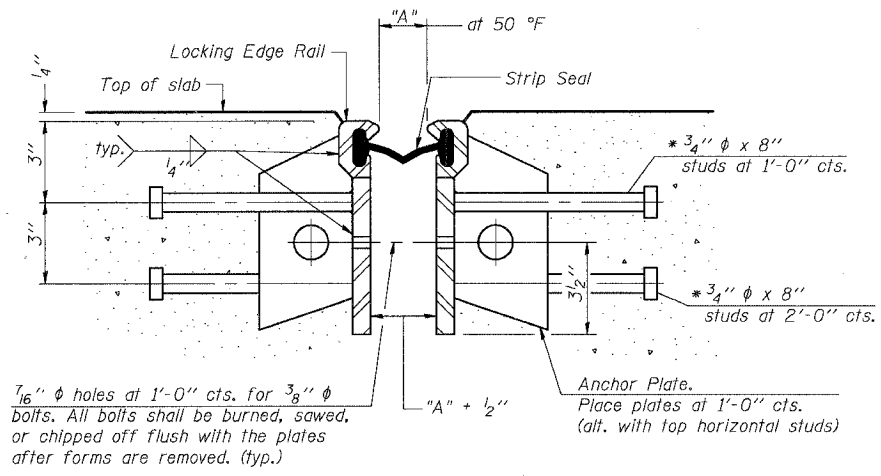
Locking Edge Rails may be spliced at slope discontinuities and stage construction joints.

The manufacturer's recommended installation methods shall be followed.



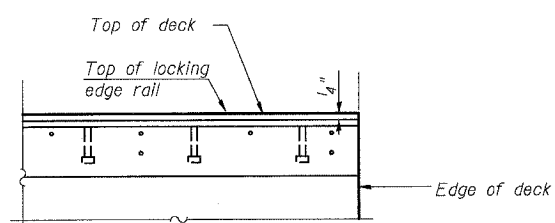
SECTION THRU ROLLED RAIL EXP. JOINT
(510 Studs Required)

LOCATION	"A"
PIER 4	1 1/8"
PIERS 1 & 3	1 3/4"

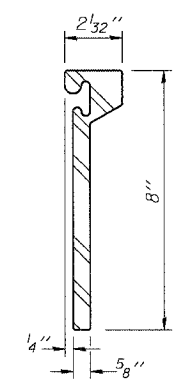


SECTION THRU WELDED RAIL EXP. JOINT
(306 Studs Required)
(204 Anchor Plates Required)

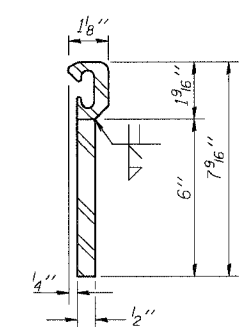
* Granular or solid flux filled headed studs conforming to Article 1006.32 of the Std. Specs., automatically end welded.



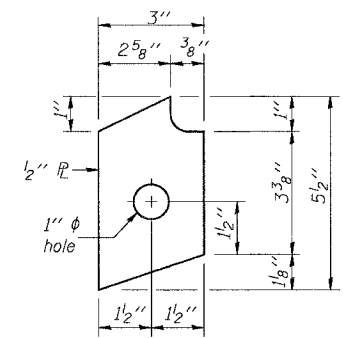
END TREATMENT ELEVATION



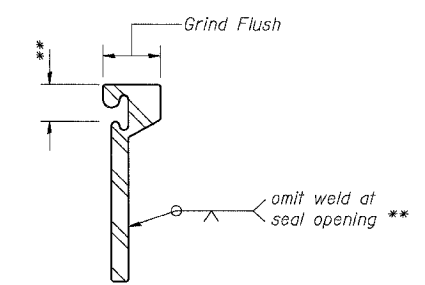
ROLLED (EXTRUDED) RAIL



WELDED RAIL



ANCHOR PL
(for welded rail)



LOCKING EDGE RAIL SPLICE

The inside of the locking edge rail groove shall be free of weld residue.

LOCKING EDGE RAILS

BILL OF MATERIAL

Item	Unit	Total
Preformed Joint Strip Seal	foot	99.0

STRIP SEAL

U.S. 20 OVER APPLE RIVER
F.A.P. ROUTE 301 - SEC. 28BR-1
JO DAVIESS COUNTY
STATION 1434+57.61
S.N. 043-0010

DESIGNED	DF
CHECKED	CB
DRAWN	RG
CHECKED	DF