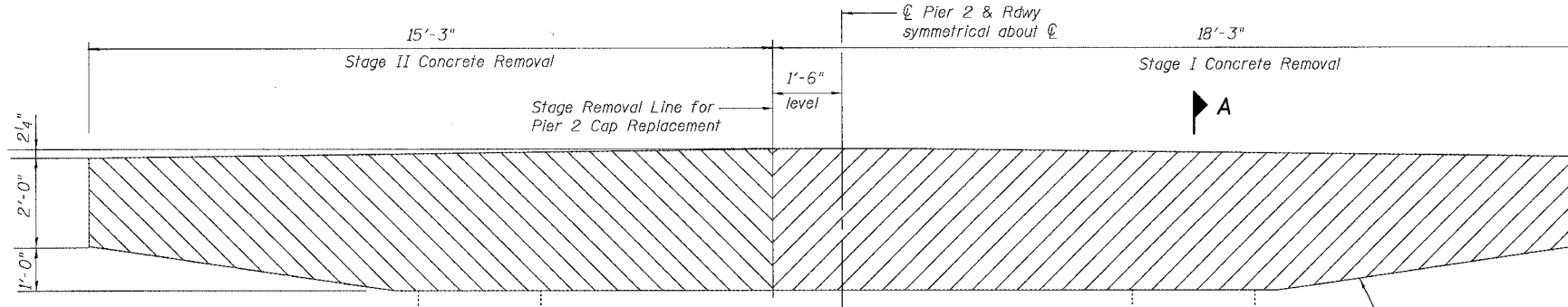
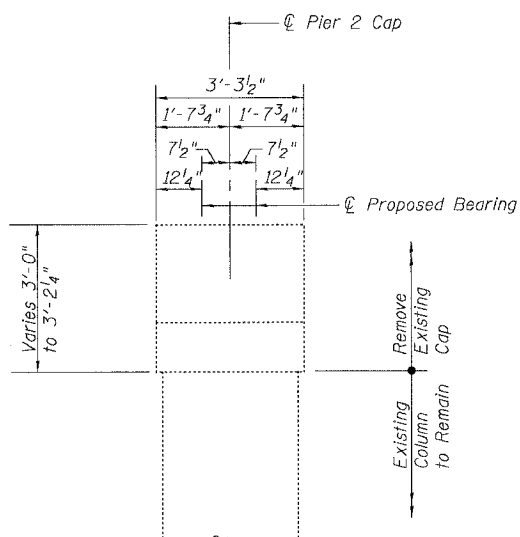


STATE OF ILLINOIS
DEPARTMENT OF TRANSPORTATION

ROUTE NO.	SECTION	COUNTY	STATE	SHEET	SHEET NO.
FAP 301	28BR-1	JO DAVIESS	53	26	27 SHEETS
FED. ROAD DIST. NO. 7	ILLINOIS	FED. AID PROJECT-			

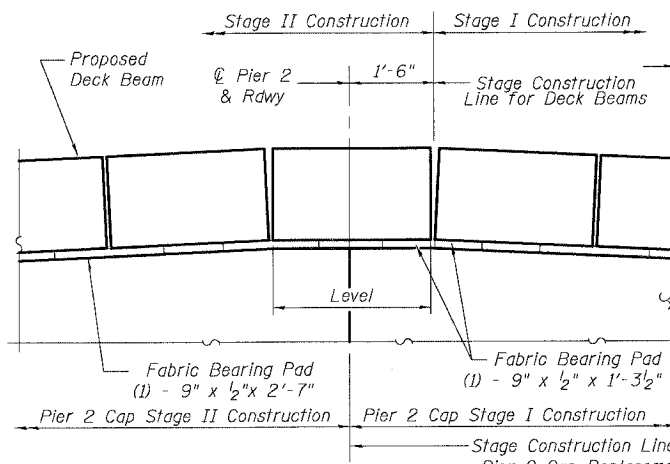
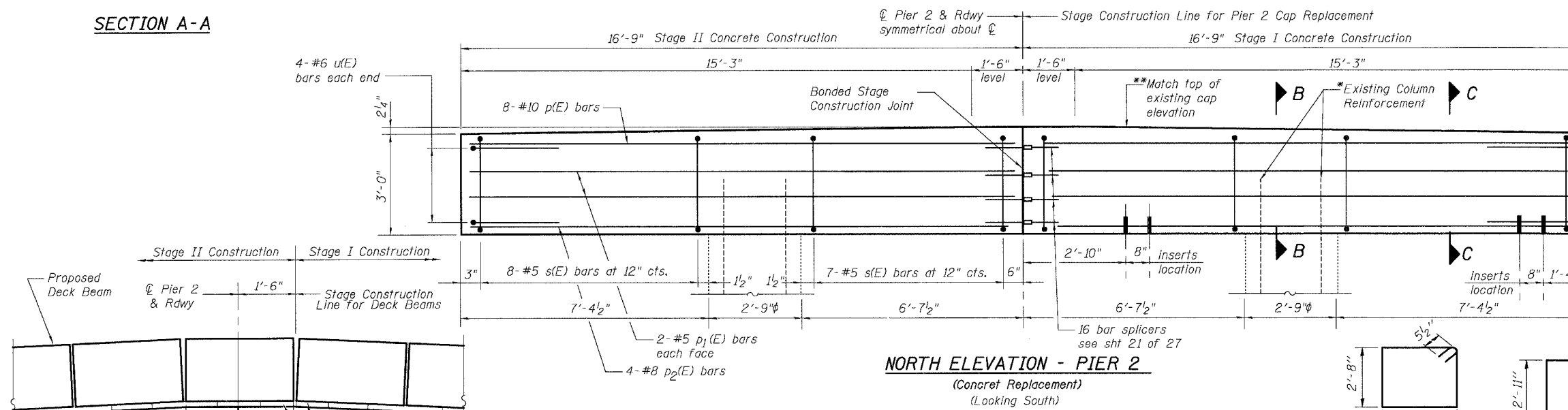
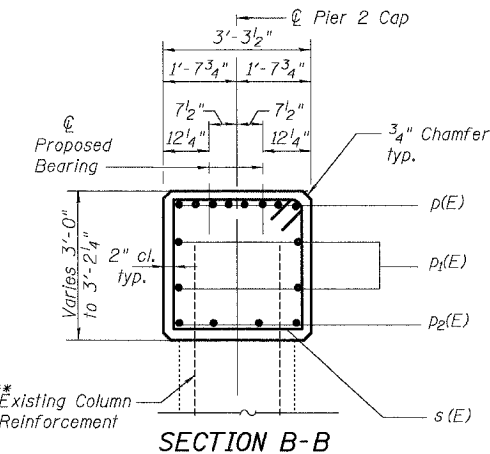
Contract #64A49



LEGEND

Stage I Concrete Removal (diagonal hatching)

Stage II Concrete Removal (cross-hatching)

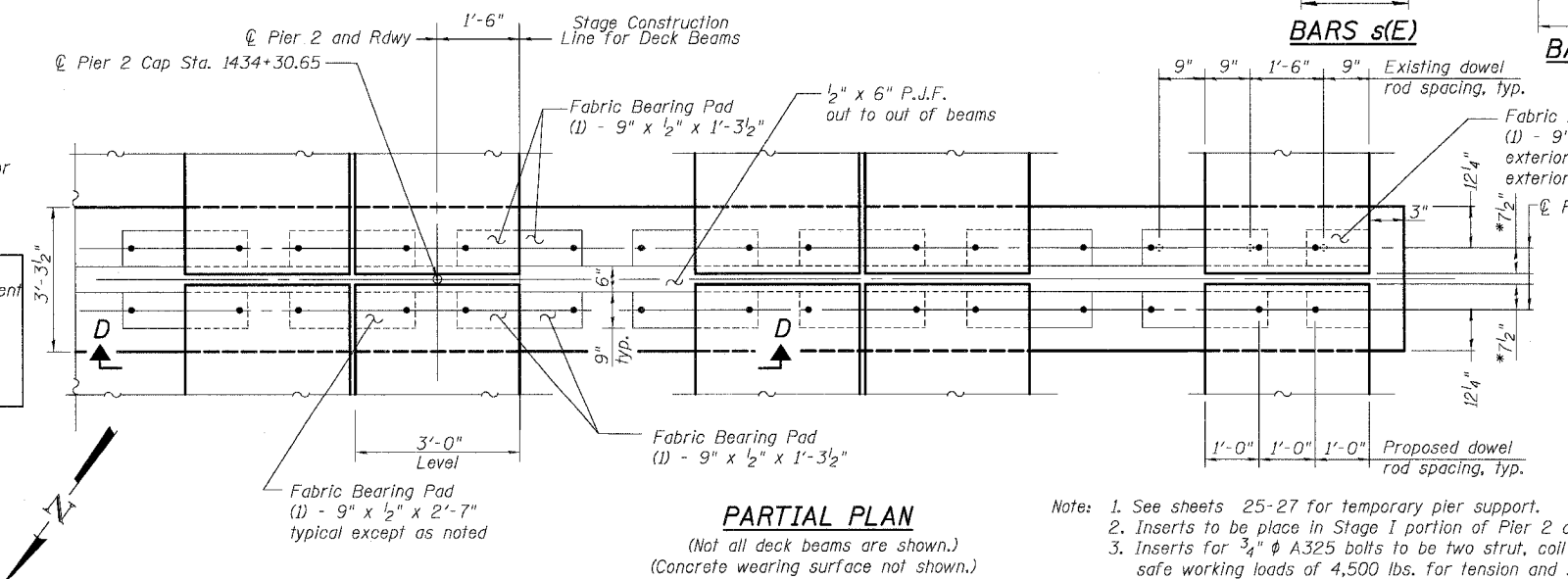


Notes: (Concrete wearing surface and dowel rods not shown.) (Looking South)

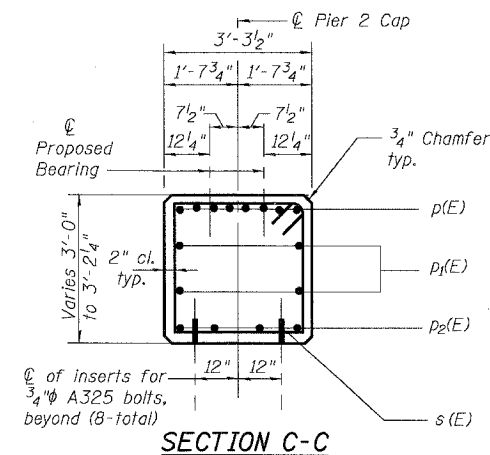
* Existing column reinforcement extending into new concrete shall be cleaned, straightened and incorporated into new construction. Any existing reinforcement damaged during removal of the pier cap shall be replaced with equivalent size grouted bars at no additional cost to the State.

** Contractor and Engineer to record top of pier cap elevations prior to existing cap removal.

DESIGNED	MO
CHECKED	CB
DRAWN	RG
CHECKED	DF



Note: 1. See sheets 25-27 for temporary pier support.
2. Inserts to be placed in Stage I portion of Pier 2 construction only.
3. Inserts for 3/4" A325 bolts to be two strut, coil with minimum safe working loads of 4,500 lbs. for tension and 3,100 lbs. for shear. Cost of inserts and bolts to be included in Temporary Support System.



BILL OF MATERIAL

Bar	No.	Size	Length	Shape	
p(E)	16	#10	16'-5"	—	
p1(E)	8	#5	16'-5"	—	
p2(E)	8	#8	16'-5"	—	
s(E)	30	#5	12'-1"	□	
u(E)	8	#6	8'-11"	—	
Reinforcement Bars, Epoxy Coated				Pound	2100
Concrete Structures				Cu. Yd.	12.7
Concrete Removal				Cu. Yd.	11.8
Bar Splicers				Each	16

Reinforcement bars designated (E) shall be epoxy coated.

PIER 2 REPAIRS

U.S. 20 OVER APPLE RIVER
F.A.P. ROUTE 301 - SEC. 28BR-1
JO DAVIESS COUNTY
STATION 1434+57.61
S.M. 043-0010