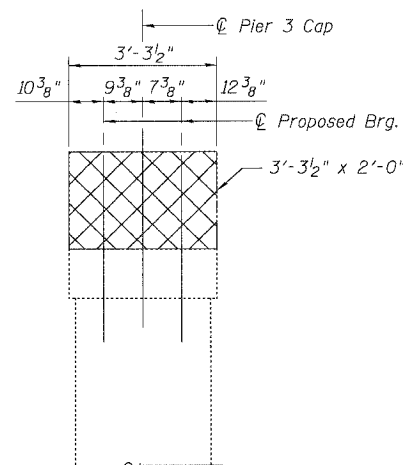


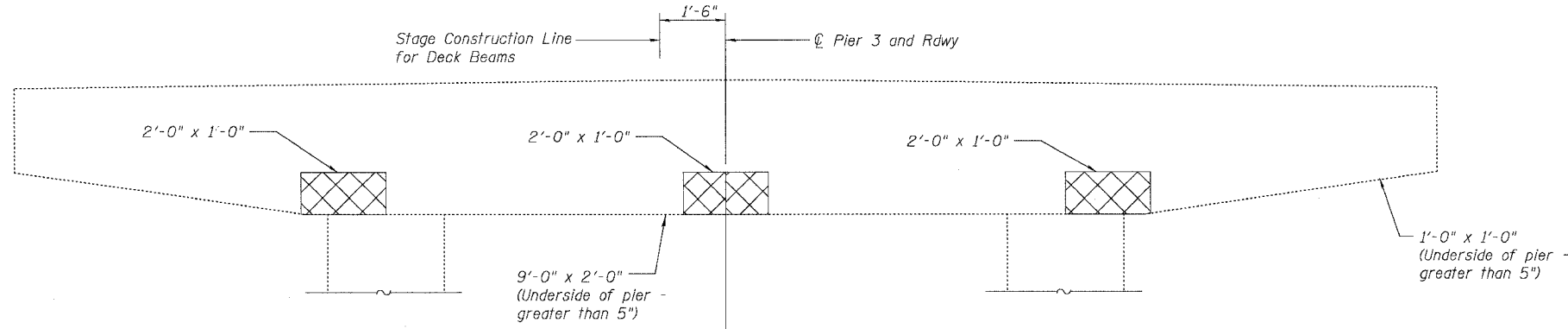
STATE OF ILLINOIS
DEPARTMENT OF TRANSPORTATION

ROUTE NO.	SECTION	COUNTY	SHEET NO.	SHEET NO.
FAP 301	28BR-1	JO DAVIESS	53	27
SHEET NO. 19				
27 SHEETS				

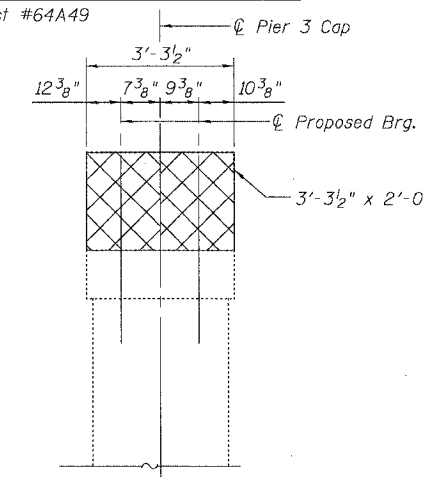
Contract #64A49



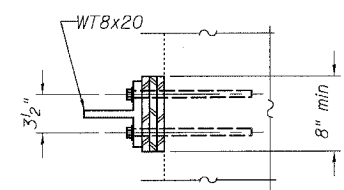
WEST END VIEW
(Looking East)



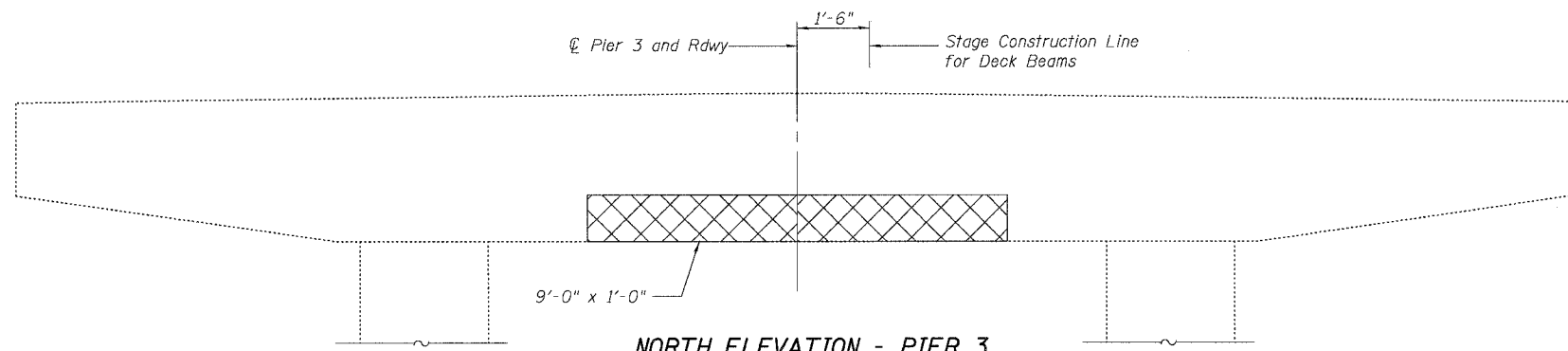
SOUTH ELEVATION - PIER 3
(Looking North)



EAST END VIEW
(Looking West)



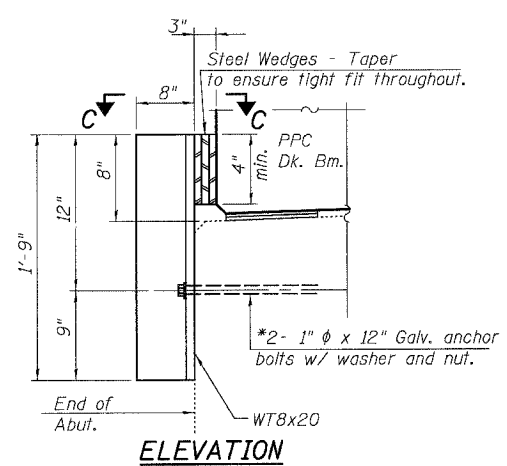
VIEW C-C



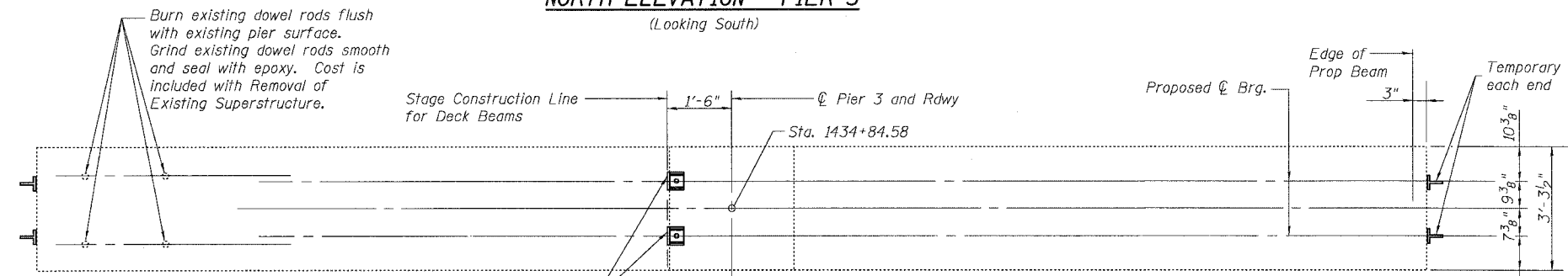
NORTH ELEVATION - PIER 3
(Looking South)

LEGEND

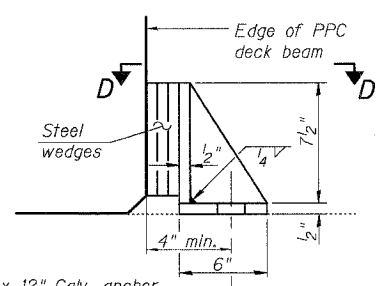
	Structural Repair of Concrete (Depth Equal to or Less Than 5")
	Structural Repair of Concrete (Depth Greater Than 5")



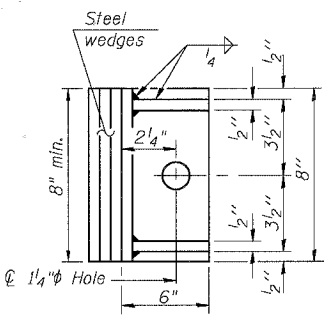
TEMPORARY RETAINER DETAIL
(At Exterior Beams)



PLAN



ELEVATION



VIEW D-D

TEMPORARY RETAINER AT STAGE CONSTRUCTION LINE
(Equivalent rolled angle with stiffeners will be allowed in lieu of welded plates.)

*1" ϕ x 12" Galv. anchor bolts w/ 2 1/2" x 2 1/2" x 5/16" ϕ washer under nut.

Notes:

The concrete wearing surface (including blackout) shall be poured and cured prior to removing the Stage I Construction Temporary Retainers. Burn or cut the anchor bolt flush with existing pier cap surface. Grind anchor bolts smooth and seal with epoxy prior to Stage II Construction. Cost is included with Prestressed Concrete Deck Beams (21" Depth).

The concrete wearing surface (including blackout) shall be poured and cured prior to removing the temporary retainers. Anchor bolts may be left in place or removed as specified in the removal of Stage I Construction Temporary Retainers above.

*Cost of temporary retainers and accessories are included with Precast Prestressed Concrete Deck Beams (21" Depth).

*Anchor bolts or approved threaded rods to be drilled and grouted in place. See Anchor Bolt Detail sheet 22 of 27.

BILL OF MATERIAL

Item	Unit	Total
Structural Repair of Concrete (Depth Greater Than 5")	Sq. Ft.	47.2

DESIGNED	MO
CHECKED	CB
DRAWN	RG
CHECKED	DF

PIER 3 REPAIRS
U.S. 20 OVER APPLE RIVER
F.A.P. ROUTE 301 - SEC. 28BR-1
JO DAVIESS COUNTY
STATION 1434+57.61
S.N. 043-0010