

F.A.P. RTE.	SECTION	COUNTY	TOTAL SHEETS	SHEET NO.
+567	141-1 M	OGLE	73	13
STA.		TO STA.		
FED. ROAD DIST. NO.		ILLINOIS FED. AID PROJECT		

# HORIZONTAL & VERTICAL CONTROL

Chain NE\_RAMP contains:  
1330 CUR 1340 CUR 1350 1360

Beginning chain NE\_RAMP description  
Point 1330 N 1,920,772.8228 E 2,608,147.2188 Sta 10+00.0000

Course from 1330 to PC 1340 358° 15' 45.3205" Dist 249.3668'

**Curve Data**

**Curve 1340**  
P.I. Station 14+64.8730 N 1,921,237.4821 E 2,608,133.1244  
Delta = 48° 21' 00.4149" (LT)  
Degree = 11° 56' 04.5185"  
Tangent = 215.5061'  
Length = 405.1260'  
Radius = 480.0817'  
External = 46.1515'  
Long Chord = 393.2118'  
Mid. Ord. = 42.1039'  
P.C. Station 12+49.3668 N 1,921,022.0750 E 2,608,139.6583  
P.T. Station 16+54.4928 N 1,921,375.7544 E 2,607,967.8257  
C.C. N 1,921,007.5195 E 2,607,659.7973

Course from PT 1340 to PC 1350 309° 54' 44.9057" Dist 238.7883'

**Curve Data**

**Curve 1350**  
P.I. Station 22+30.7683 N 1,921,745.5024 E 2,607,525.8077  
Delta = 47° 39' 36.4974" (RT)  
Degree = 7° 29' 54.4905"  
Tangent = 337.4872'  
Length = 635.5982'  
Radius = 764.0996'  
External = 71.2122'  
Long Chord = 617.4314'  
Mid. Ord. = 65.1412'  
P.C. Station 18+93.2811 N 1,921,528.9649 E 2,607,784.6690  
P.T. Station 25+28.8793 N 1,922,082.6867 E 2,607,511.5140  
C.C. N 1,922,115.0488 E 2,608,274.9280

Course from PT 1350 to 1360 357° 34' 21.4031" Dist 1,027.4063'

Point 1360 N 1,923,109.1712 E 2,607,468.0000 Sta 35+56.2856

Ending chain NE\_RAMP description  
Chain SE\_RAMP contains:  
1450 CUR 1460 CUR 1470 1480

Beginning chain SE\_RAMP description  
Point 1450 N 1,918,669.6683 E 2,607,562.9038 Sta 100+00.0000

Course from 1450 to PC 1460 1° 49' 29.3810" Dist 766.8860'

**Curve Data**

**Curve 1460**  
P.I. Station 110+83.0909 N 1,919,752.2099 E 2,607,597.3936  
Delta = 44° 55' 33.7723" (RT)  
Degree = 7° 29' 30.4168"  
Tangent = 316.2049'  
Length = 599.6710'  
Radius = 764.7817'  
External = 62.7910'  
Long Chord = 584.4265'  
Mid. Ord. = 58.0268'  
P.C. Station 107+66.8860 N 1,919,436.1654 E 2,607,587.3244  
P.T. Station 113+66.5571 N 1,919,968.8645 E 2,607,827.7113  
C.C. N 1,919,411.8118 E 2,608,351.7182

Course from PT 1460 to PC 1470 46° 45' 03.1534" Dist 244.9084'

**Curve Data**

**Curve 1470**  
P.I. Station 118+25.5934 N 1,920,283.3834 E 2,608,162.0649  
Delta = 48° 29' 17.8328" (LT)  
Degree = 12° 03' 00.6680"  
Tangent = 214.1280'  
Length = 402.3862'  
Radius = 475.4763'  
External = 45.9914'  
Long Chord = 390.4856'  
Mid. Ord. = 41.9351'  
P.C. Station 116+11.4654 N 1,920,136.6689 E 2,608,006.0980  
P.T. Station 120+13.8517 N 1,920,497.4129 E 2,608,155.5728  
C.C. N 1,920,482.9970 E 2,607,680.3150

Course from PT 1470 to 1480 358° 15' 45.3205" Dist 275.5366'

Point 1480 N 1,920,772.8228 E 2,608,147.2188 Sta 122+89.3882

Ending chain SE\_RAMP description

Chain IL38\_WEST contains:  
390 350 370

Beginning chain IL38\_WEST description  
Point 390 N 1,920,510.1222 E 2,599,168.3477 Sta 582+38.4000

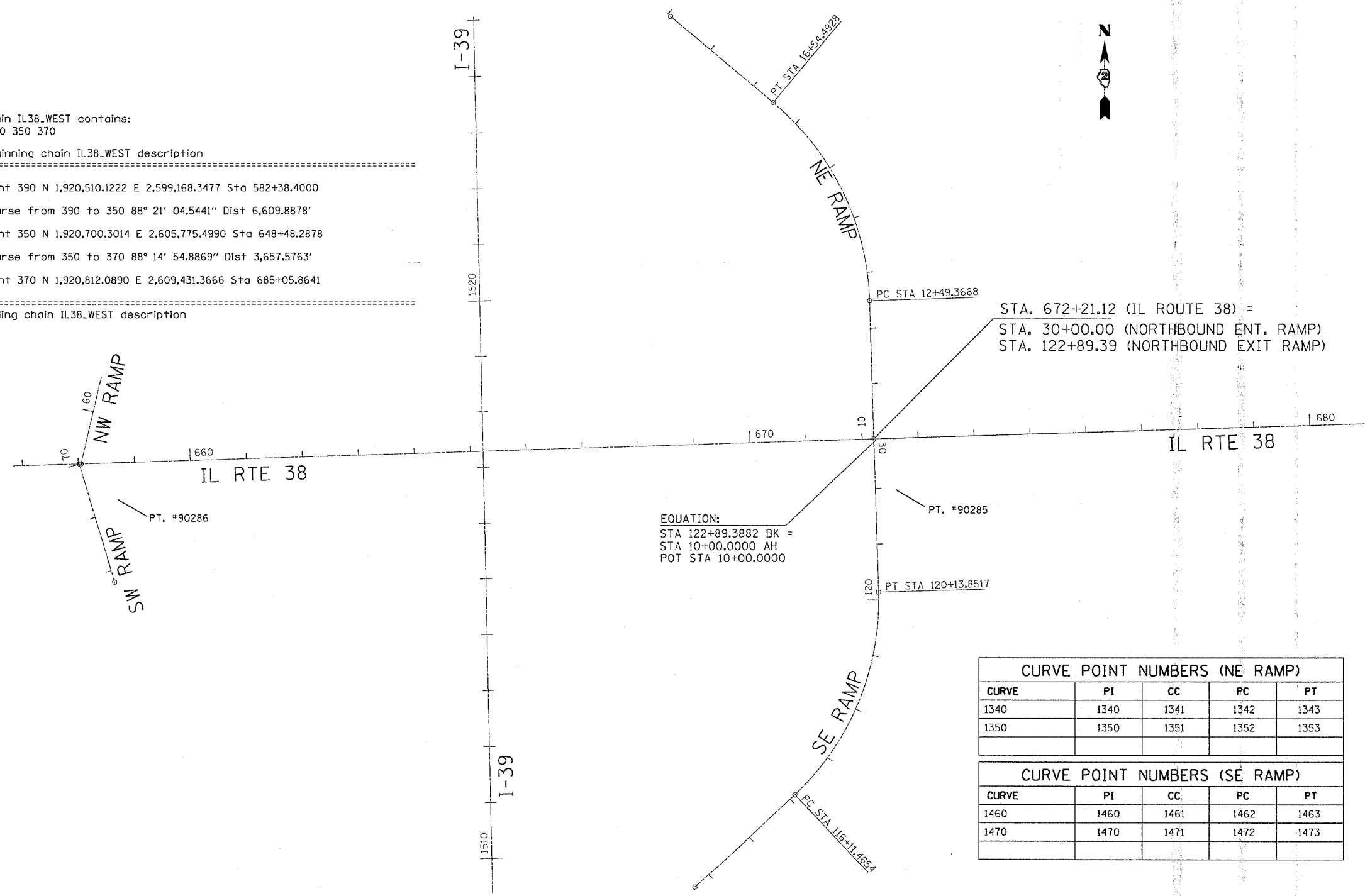
Course from 390 to 350 88° 21' 04.5441" Dist 6,609.8878'

Point 350 N 1,920,700.3014 E 2,605,775.4990 Sta 648+48.2878

Course from 350 to 370 88° 14' 54.8869" Dist 3,657.5763'

Point 370 N 1,920,812.0890 E 2,609,431.3666 Sta 685+05.8641

Ending chain IL38\_WEST description



EQUATION:  
STA 122+89.3882 BK =  
STA 10+00.0000 AH  
POT STA 10+00.0000

CURVE	PI	CC	PC	PT
1340	1340	1341	1342	1343
1350	1350	1351	1352	1353

CURVE	PI	CC	PC	PT
1460	1460	1461	1462	1463
1470	1470	1471	1472	1473

POINT	NORTH	EAST	ELEVATION	CHAIN	STATION	OFFSET	DESCRIPTION
400	1920800.7610	2607577.3190	827.6060	IL38_WEST	666+52.3364	45.3431' LT	BOLT
485	1922131.1480	2607540.6460	800.9940	NE_RAMP	25+76.0632	31.1583' RT	HEADWALL, CHISELED SQUARE
459	1919517.2890	2607476.0940	798.7680	SE_RAMP	108+34.2118	117.1725' LT	WINNEBAGO INLET, CORNER

NAME	DATE

ILLINOIS DEPARTMENT OF TRANSPORTATION  
**FAP ROUTE 567 (IL 38)**  
**SECTION 141-1 M**  
**OGLE COUNTY**

SCALE: VERT. \_\_\_\_\_  
          HORIZ. \_\_\_\_\_

DATE \_\_\_\_\_

DRAWN BY \_\_\_\_\_  
CHECKED BY \_\_\_\_\_

PLOT DATE = Thu Mar 30 14:21:33 2006  
 FILE NAME = c:\projects\act\18005\dlr\0805\hvc.dgn  
 PLOT SCALE = 1/8"=1'-0"  
 USER NAME = dmsdd