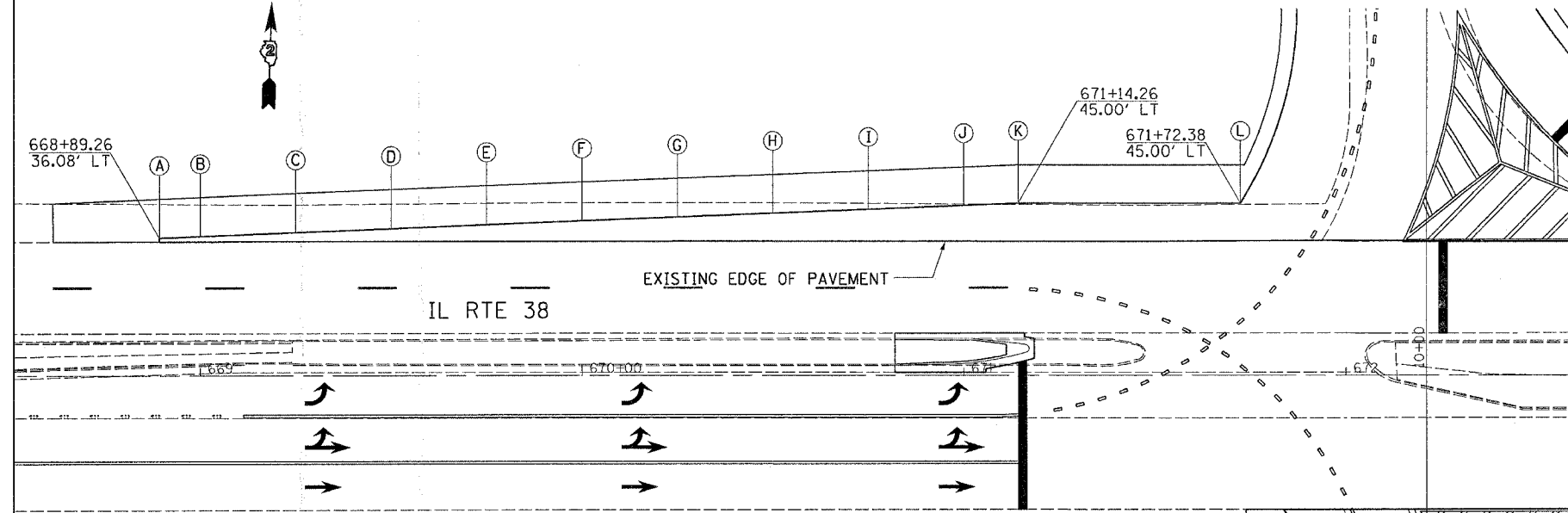


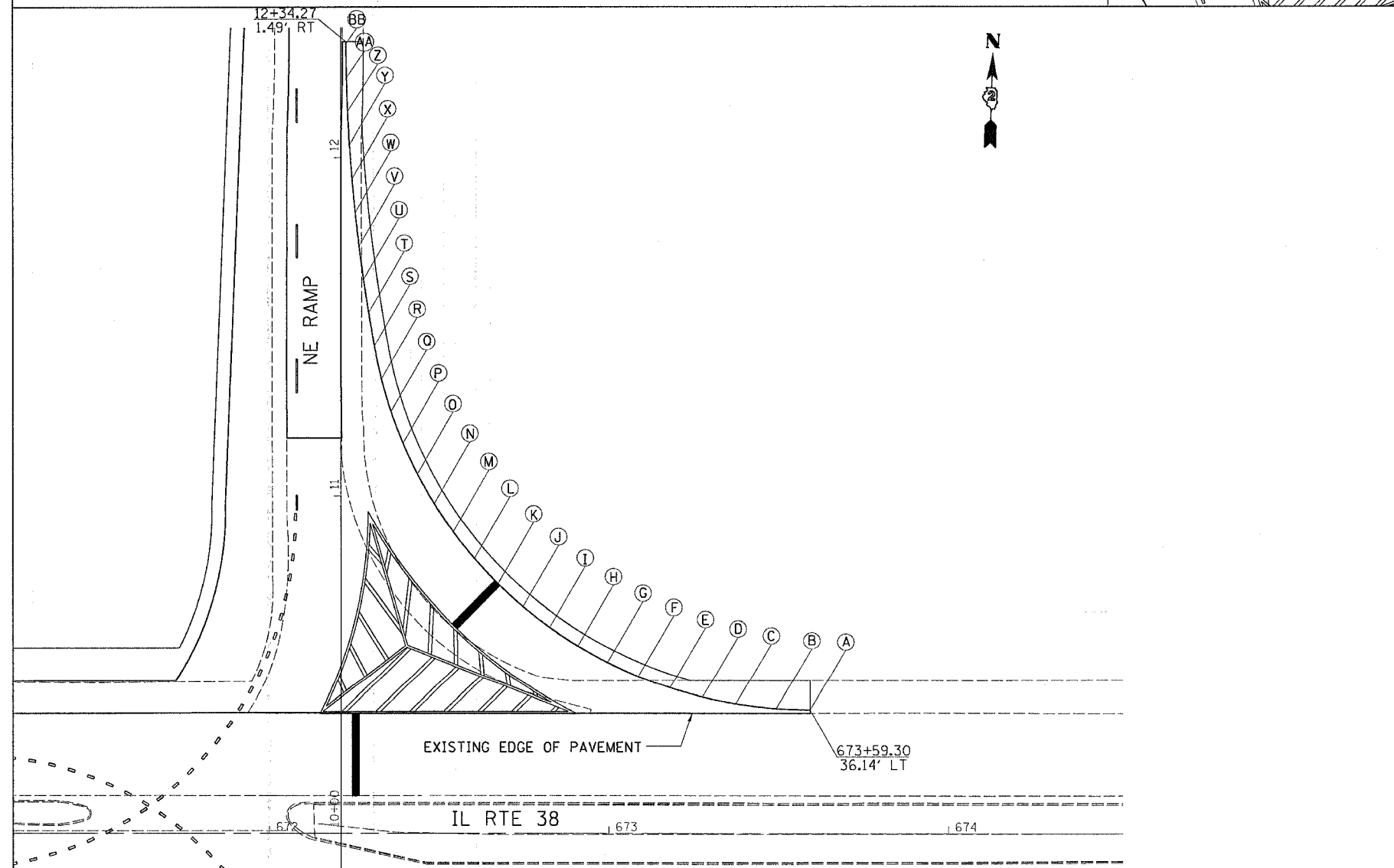
F.A.P. RTE.	SECTION	COUNTY	TOTAL SHEETS	SHEET NO.
*567	141-1 M	OGLE	73	22
STA.		TO STA.		
FED. ROAD DIST. NO.		ILLINOIS	FED. AID PROJECT	
*(IL 38)				

PAVEMENT ELEVATIONS



LETTER	STATION	OFFSET	* OFFSET	ELEVATIONS
A	668+89.26	36.08' LT	1.00'	821.70
B	669+00.00	36.51' LT	1.41'	821.46
C	669+25.00	37.50' LT	2.36'	820.94
D	669+50.00	38.49' LT	3.36'	820.41
E	669+75.00	39.48' LT	4.35'	819.89
F	670+00.00	40.47' LT	5.33'	819.37
G	670+25.00	41.46' LT	6.29'	818.87
H	670+50.00	42.45' LT	7.25'	818.36
I	670+75.00	43.44' LT	8.24'	817.87
J	671+00.00	44.43' LT	9.25'	817.39
K	671+14.26	45.00' LT	9.82'	817.07
L	671+72.38	45.00' LT	9.72'	816.00

*OFFSET IS FROM RT EDGE OF WESTBOUND LANE



LETTER	STATION	OFFSET	** OFFSET	ELEVATIONS
A	673+59.30	36.14' LT	1.00'	812.83
B	673+49.31	36.51' LT	1.39'	813.06
C	673+37.38	37.98' LT	2.90'	813.22
D	673+27.60	40.03' LT	5.08'	813.35
E	673+18.00	42.83' LT	8.15'	813.48
F	673+08.64	46.35' LT	12.22'	813.64
G	672+99.59	50.59' LT	15.38'	813.79
H	672+90.89	55.51' LT	18.34'	813.88
I	672+82.59	61.08' LT	21.27'	813.92
J	672+74.74	67.28' LT	23.34'	813.94
K	10+74.07	46.26' RT	24.64'	813.96
L	10+81.57	39.30' RT	25.15'	813.99
M	10+89.40	33.09' RT	24.85'	814.02
N	10+97.69	27.50' RT	23.75'	814.05
O	11+06.39	22.86' RT	21.88'	814.05
P	11+15.43	18.31' RT	19.24'	813.90
Q	11+24.78	14.77' RT	15.36'	813.77
R	11+34.37	11.95' RT	12.24'	813.82
S	11+44.15	9.87' RT	10.03'	813.87
T	11+54.01	8.18' RT	8.28'	813.87
U	11+63.89	6.67' RT	6.74'	813.69
V	11+73.81	5.36' RT	5.40'	813.50
W	11+83.74	4.23' RT	4.26'	813.29
X	11+93.70	3.30' RT	3.31'	813.18
Y	12+03.67	2.56' RT	2.57'	813.02
Z	12+13.66	2.01' RT	1.74'	812.88
AA	12+23.65	1.66' RT	1.20'	812.73
BB	12+33.65	1.49' RT	1.00'	812.70

**OFFSET IS FROM RT EDGE OF EXISTING PAVEMENT OF NE RAMP

PLOT DATE = Thu Mar 30 14:27:05 2006
 PLOT USER = d:\projects\64b37\64b37.dgn
 PLOT SCALE = 24.0000 / IN.
 USER NAME = dmsd