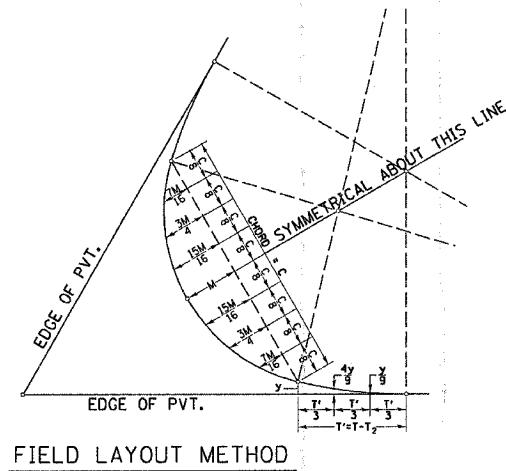
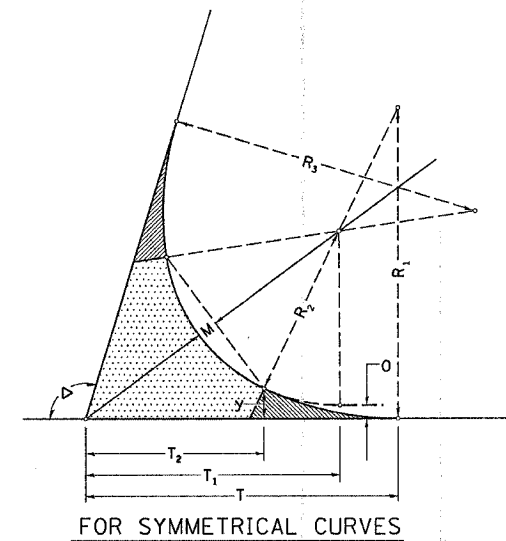


# THREE CENTER CURVE DATA

## SYMMETRICAL CURVES

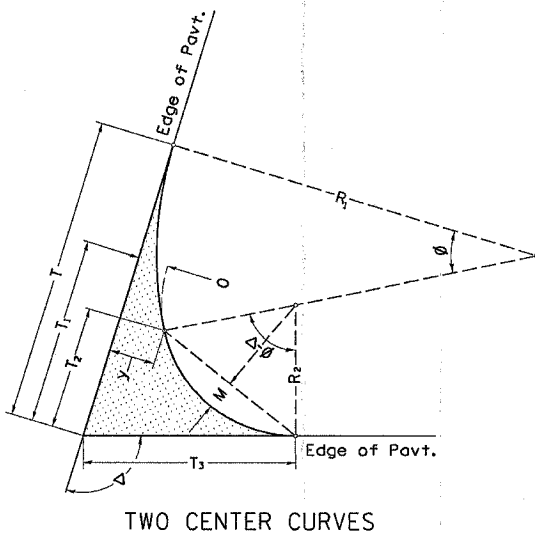


CURVE #										
R <sub>1</sub>										
R <sub>2</sub>										
R <sub>3</sub>										
O										
Δ										
T										
T <sub>1</sub>										
T <sub>2</sub>										
T'										
y										
4y/9										
y/9										
M										
15M										
16										
3M										
4										
7M										
16										
C										



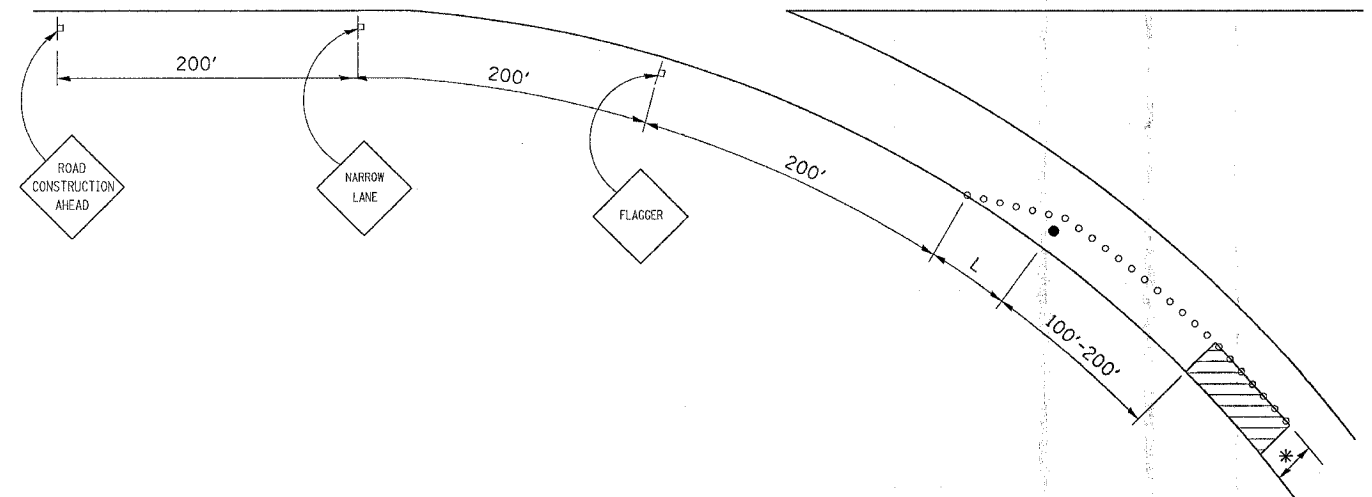
ALL DIMENSIONS ARE IN MILLIMETERS (INCHES) UNLESS OTHERWISE NOTED.

# TWO CENTER CURVE DATA



CURVE #										
R <sub>1</sub>										
R <sub>2</sub>										
O										
Δ										
T										
T <sub>1</sub>										
T <sub>2</sub>										
T <sub>3</sub>										
y										
4y/9										
y/9										
M										
15M										
16										
3M										
4										
7M										
16										
C										

# TRAFFIC CONTROL AND PROTECTION FOR RAMPS



## GENERAL NOTES

CONES AT 8 m (25') CENTERS FOR 105 m (350'). ADDITIONAL CONES MAY BE PLACED AT 15 m (50') CENTERS. WHEN DRUMS OR BARRICADES ARE USED, THE INTERVAL DEVICES MAY BE DOUBLED.

\* WIDTH OF CLOSURE SHOWN ON RAMP PATCHING SCHEDULE OR AS DIRECTED BY ENGINEER.

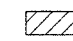




L = CLOSURE WIDTH \* TAPER RATIO IS SPEED LIMIT/1 (POSTED OR ADVISORY)

ANY VISIBLE REPAIRS REQUIRED ON THE SHOULDER BECAUSE OF TRAFFIC SHALL BE PROVIDED AT THE CONTRACTORS EXPENSE. THE ENGINEER SHALL BE THE SOLE JUDGE FOR ANY SHOULDER REPAIRS.

THE RAMP SHALL BE COMPLETELY OPEN TO TRAFFIC BY NIGHTFALL.

TRAFFIC CONTROL AND PROTECTION FOR RAMPS SHALL BE INCLUDED IN THE COST OF STANDARD 701406 OR 701401

## SYMBOLS

-  WORK AREA
-  SIGN
-  BARRICADE OR DRUM
-  CONE, DRUM OR BARRICADE
-  FLAGGER WITH TRAFFIC CONTROL SIGN

ALL DIMENSIONS ARE IN MILLIMETERS (INCHES) UNLESS OTHERWISE NOTED.