

F.A.I. RTE.	SECTION	COUNTY	TOTAL SHEETS	SHEET NO.
280	(81-1B)M-1	Rock Island	18	1

STATE OF ILLINOIS
DEPARTMENT OF TRANSPORTATION
DIVISION OF HIGHWAYS

**PROPOSED
HIGHWAY PLANS**

FAI ROUTE 280 (I-280)
SECTION (81-1B)M-1

ROCK ISLAND COUNTY

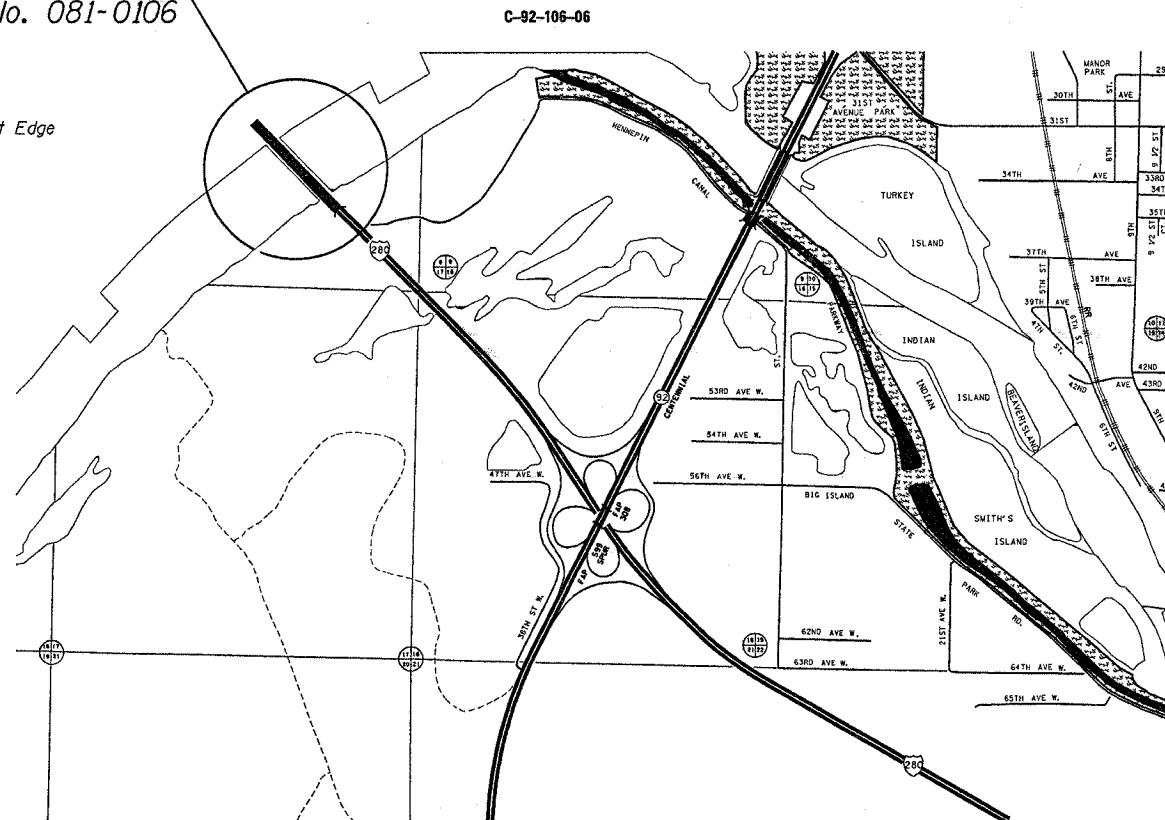
INDEX OF SHEETS

1. Cover Sheet, Index of Sheets, Standards
2. Summary of Quantities and General Notes
Bridge Plans
3. Elevation
4. -5. Framing Plans
6. Repair Details
7. Beam Elevations
8. Beam Elevations
9. Beam Elevations
10. Beam Elevations
11. Beam Elevations
12. Beam Elevations
13. Beam Elevations
14. Beam Elevations
15. Beam Elevations
16. Beam Elevations
17. Beam Elevations
18. Beam Elevations

STANDARDS

- 701101-01 Off-Road Operations, Multilane, 4.5 m (15') to 600 mm (24 9/32) From Pavement Edge
- 701400-02 Approach to Lane Closure, Freeway/Expressway
- 701401-03 Lane Closure, Freeway/Expressway
- 701406-04 Lane Closure, Freeway/Expressway, Day Operations Only
- 701411-03 Lane Closure, Multilane, at Entrance or Exit Ramp, for Speeds > 45 MPH
- 702001-06 Traffic Control Devices

Project Location
Structure No. 081-0106



D-92-040-06



LOCATION OF SECTION INDICATED THUS: - [black rectangle] -

STATE OF ILLINOIS
DEPARTMENT OF TRANSPORTATION
DIVISION OF HIGHWAYS

SUBMITTED March 27, 2006
Gregory J. Mountain
 DEPUTY DIRECTOR OF HIGHWAYS, REGION ENGINEER
May 12, 2006
Mike Line
 ENGINEER OF DESIGN AND ENVIRONMENT
May 12, 2006
Milton R. Sev
 DIRECTOR OF HIGHWAYS, CHIEF ENGINEER

**PRINTED BY THE AUTHORITY
OF THE STATE OF ILLINOIS**

J.U.L.I.E.
JOINT UTILITY LOCATION INFORMATION FOR EXCAVATION
1-800-892-0123

CONTRACT NO. 64C13

F.A.I. RTE.	SECTION	COUNTY	TOTAL SHEETS	SHEET NO.
280	(81-1B)M-1	Rock Island	18	2
STA. _____		TO STA. _____		
FED. ROAD DIST. NO. _____		ILLINOIS FED. AID PROJECT		

SUMMARY OF QUANTITIES

paycode	description	units	quantity
50501130	STRUCTURAL STEEL REPAIR	POUND	25990
67100100	MOBILIZATION	L SUM	1
70100205	TRAFFIC CONTROL AND PROTECTION, STANDARD 701401	EACH	1
70100700	TRAFFIC CONTROL AND PROTECTION, STANDARD 701406	L SUM	1
X0322556	STIFFENER INTERSECTION MODIFICATION	EACH	2684

GENERAL NOTES

This structure will retain the same number 081-0106.

The Contractor shall be responsible for protecting utility property during construction operations as outlined in Article 107.31 of the Standard Specifications. A minimum of 48 hours advance notice is required for non-emergency work. The JULIE number is 800-892-0123. The following listed utilities located within the project limits or immediately adjacent to the project construction limits are members of JULIE:

SBC/Ameritech

MidAmerican Energy

Following are the known utilities located within the project limits or immediately adjacent to the project construction limits which are not members of JULIE and should be notified individually by the contractor:

*Mr. Scott Kullerstrand (IDOT)
815/284-5468*

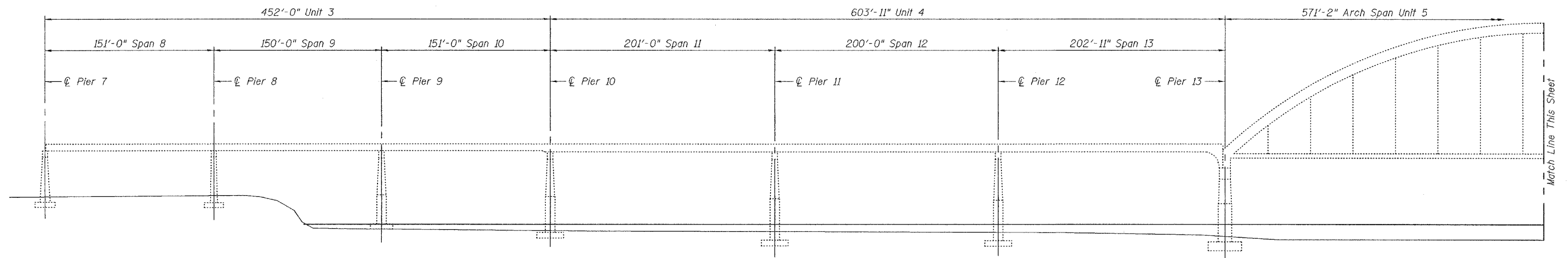
Work on this project will be in progress at the same time as work on the bridge painting project. Work on these projects shall be scheduled to keep interference between all the projects to a minimum. The contractors shall inform each other of progress of the projects and give fair warning to the other contractors when a problem might be encountered.

*Summary of Quantities & General Notes
Interstate Route 280 over Mississippi River
FAI Route 280
Section (81-1B)M-1
Rock Island County
Structure No. 081-0106*

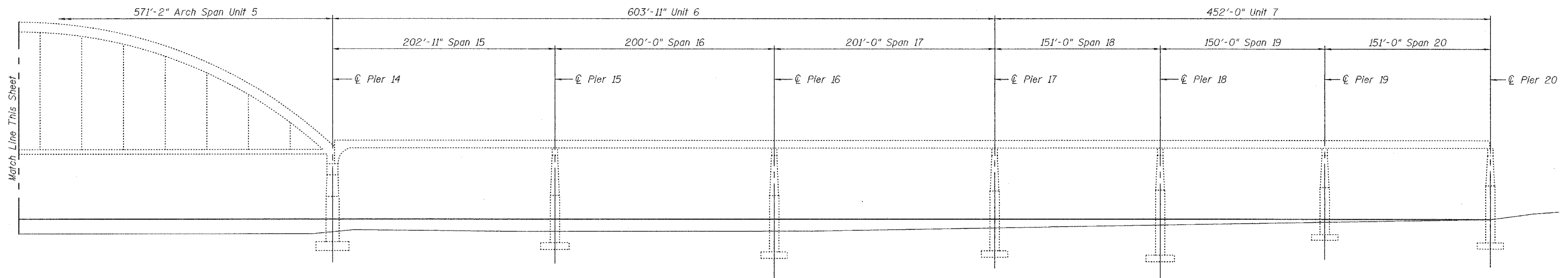
STATE OF ILLINOIS
DEPARTMENT OF TRANSPORTATION

ROUTE NO.	SECTION	COUNTY	FED. AID DIST. NO.	SHEET NO.	SHEET NO. 1 16 SHEETS
		Rock Island	18	3	
FED. ROAD DIST. NO. 7		ILLINOIS		FED. AID PROJECT	

Contract Number: 64C13



PARTIAL ELEVATION



PARTIAL ELEVATION

TOTAL BILL OF MATERIAL

ITEM	UNIT	QUANTITY
Structural Steel Repair	Pound	25,990
Stiffener Intersection Modification	Each	2,684

GENERAL NOTES

All structural steel shall conform to AASHTO Classification M-270 Gr. 36, unless otherwise noted.

Fasteners shall be high strength bolts. Bolts $\frac{3}{4}$ " ϕ open holes $\frac{13}{16}$ " ϕ , unless otherwise noted.

Plan dimensions and details relative to existing structure have been taken from existing plans and are subject to nominal construction variations. It shall be the Contractor's responsibility to verify such dimensions and details in the field and make necessary approved adjustments prior to construction or ordering of materials. Such variations shall not be cause for additional compensation for a change in scope of the work, however, the Contractor will be paid for the quantity actually furnished at the unit price bid for the work.

Cost of removal and re-installation of all members necessary to complete the work as detailed on the plans and as specified in the Special Provisions shall be included with Structural Steel Repair. Cost of temporary support for lateral bracing is included with Structural Steel Repair.

The existing structural steel coating contains lead. The Contractor should take appropriate precautions to deal with the presence of lead on this project.

Existing structural steel that will be in contact with new structural steel shall be cleaned and painted prior to erection as required by the Special Provision "Cleaning and Painting Contact Surface Areas of Existing Steel Structures". Areas left exposed shall be painted using an aluminum epoxy mastic primer according to Article 506.05 of the Standard Specifications.

All structural steel shall be shop painted with the inorganic zinc rich primer per AASHTO M300, Type 1. Cost included with Structural Steel Repair.

DESIGNED *Alvin T. Holloway*
CHECKED *Paul Johnson*
DRAWN *[Signature]*
CHECKED A.T.H. P.S.

EXAMINED *John A. Morris*
ENGINEER OF STRUCTURAL SERVICES
PASSED *Robert E. Ogilvie*
ENGINEER OF BRIDGES AND STRUCTURES

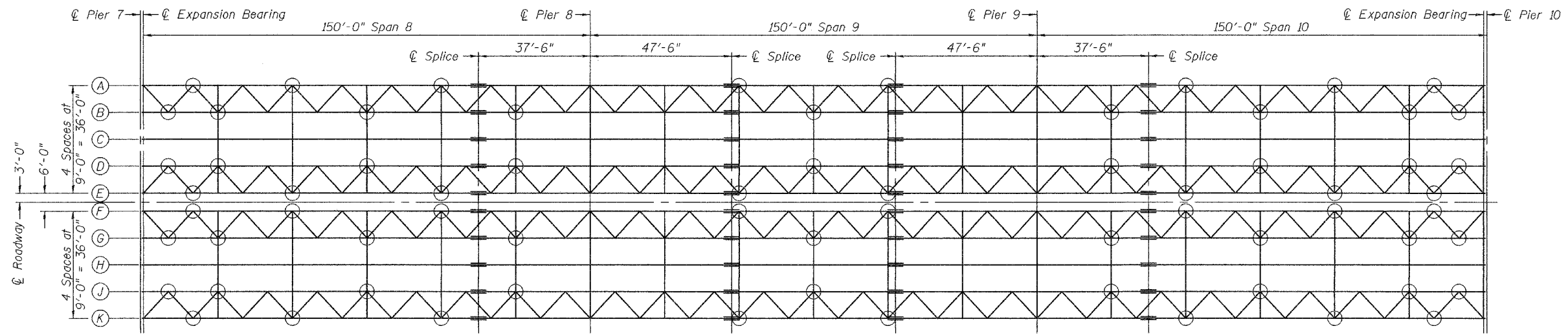


Expires: November 30, 2006

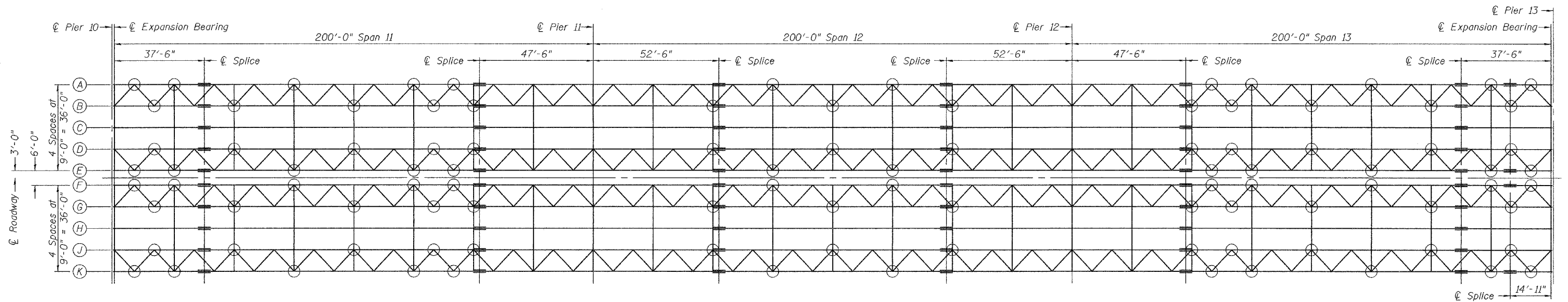
ELEVATION
F.A.I. RT. 280 OVER
MISSISSIPPI RIVER
ROCK ISLAND COUNTY
SN 081-0106

STATE OF ILLINOIS
DEPARTMENT OF TRANSPORTATION

ROUTE NO.	SECTION	COUNTY	TOTAL SHEETS	SHEET NO.	SHEET NO. 2 16 SHEETS
		Rock Island	18	4	
FED. ROAD DIST. NO. 7	ILLINOIS	FED. AID PROJECT	Contract Number: 64C13		



FRAMING PLAN UNIT 3
○ Locations of Repair Detail A
See Sheet 4 of 16.



FRAMING PLAN UNIT 4
○ Locations of Repair Detail A
See Sheet 4 of 16.

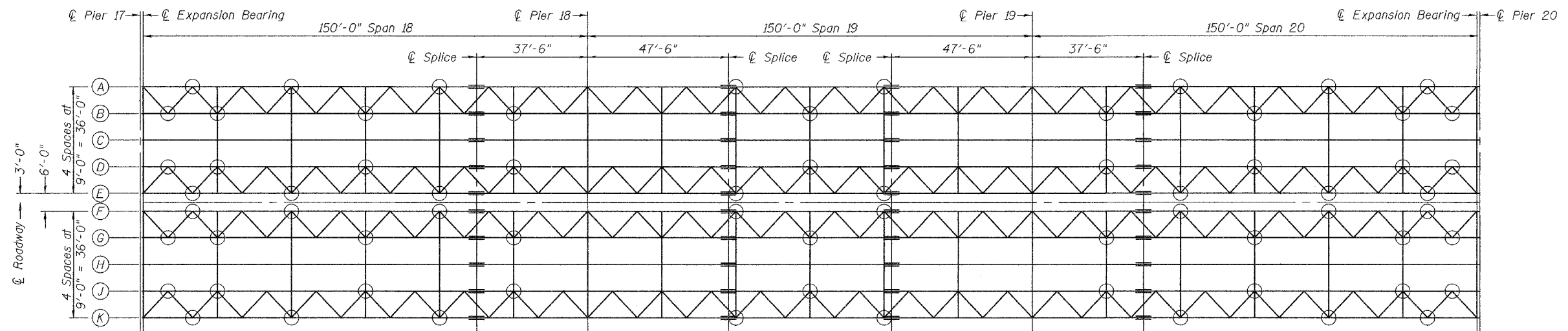
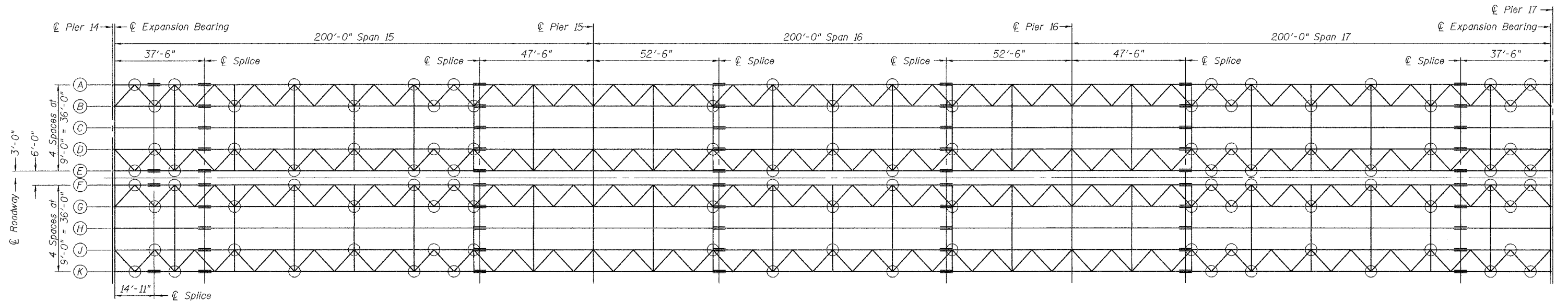
DESIGNED	A.T.H.
CHECKED	P.S.J.
DRAWN	Drew Christopher
CHECKED	A.T.H. P.S.J.

April 24, 2006
 EXAMINED *John A. Morris*
 ENGINEER OF STRUCTURAL SERVICES
 PASSED *Ralph E. Anderson*
 ENGINEER OF BRIDGES AND STRUCTURES

FRAMING PLANS
F.A.I. RT. 280 OVER
MISSISSIPPI RIVER
ROCK ISLAND COUNTY
SN 081-0106

STATE OF ILLINOIS
DEPARTMENT OF TRANSPORTATION

ROUTE NO.	SECTION	COUNTY	DATE	SHEET	SHEET NO. 3 16 SHEETS
		Rock Island	18	5	
FED. ROAD DIST. NO. 7	ILLINOIS	FED. AID PROJECT-	Contract Number: 64C13		



DESIGNED	A.T.H.
CHECKED	P.S.J.
DRAWN	Drew Christopher
CHECKED	A.T.H. P.S.J.

April 24, 2006

EXAMINED *John A. Morris*
ENGINEER OF STRUCTURAL SERVICES

PASSED *Ralph E. Anderson*
ENGINEER OF BRIDGES AND STRUCTURES

FRAMING PLANS
F.A.I. RT. 280 OVER
MISSISSIPPI RIVER
ROCK ISLAND COUNTY
SN 081-0106

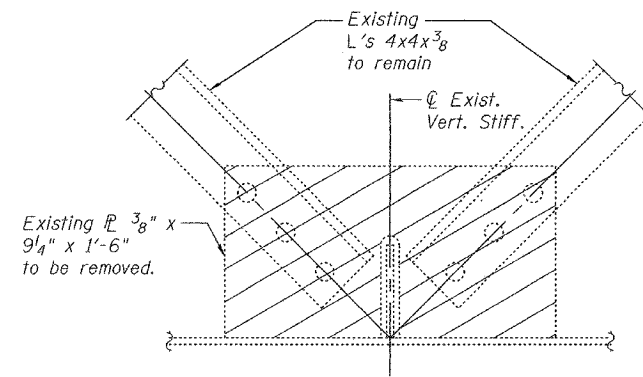
STATE OF ILLINOIS
DEPARTMENT OF TRANSPORTATION

ROUTE NO.	SECTION	COUNTY	DATE	SHEET NO.	SHEET NO. 4 16 SHEETS
		Rock Island	18	6	
FED. ROAD DIST. NO. 7	ILLINOIS	FED. AID PROJECT	Contract Number: 64C13		

Procedure for Hoan Repair Detail

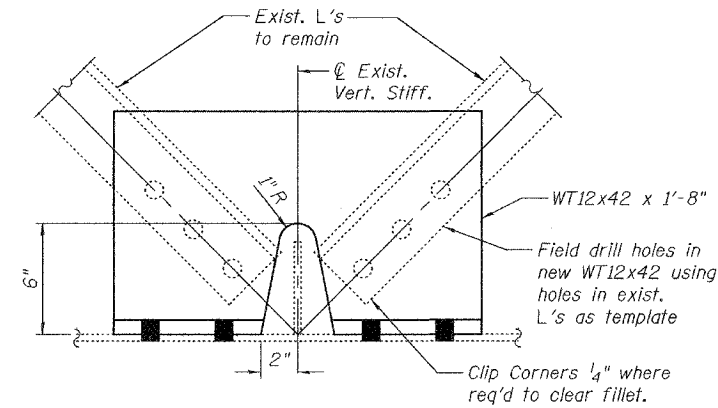
1. Remove existing $\frac{3}{8}$ " connecting \bar{L} . The minimum distance from cut to face of web shall be the larger of $\frac{1}{4}$ " or web to \bar{L} weld size, with removal of remaining material by grinding as described below. The cut shall be made parallel to the web without angling the cut towards the web. Equipment and method of cutting shall be approved by the Engineer. Any method of removal to be used shall ensure that no damage is done to the existing web, vertical stiffener or welds connecting these elements. Cutting shall be done in a manner such that the point on the opposite face of the web is not damaged. If damage to the paint occurs due to cutting, the damaged area shall be repainted at the contractor's expense and procedures shall be modified to prevent damage at subsequent removal locations.
2. Remove material between cut and web by grinding and grind smooth at web surface. Web \bar{L} surfaces shall have a roughness average (Ra) of 250 μ in. or less. Grinding equipment shall be approved by the Engineer. The grinding operation should not gouge the girder web \bar{L} .
3. The web surface at the modification shall be inspected using dye penetrant or magnetic particle (MT) methods. Any cracks found shall be identified and reported to the Bureau of Bridges and Structures for further disposition.

Cost of above described work shall be included with Structural Steel Repair.

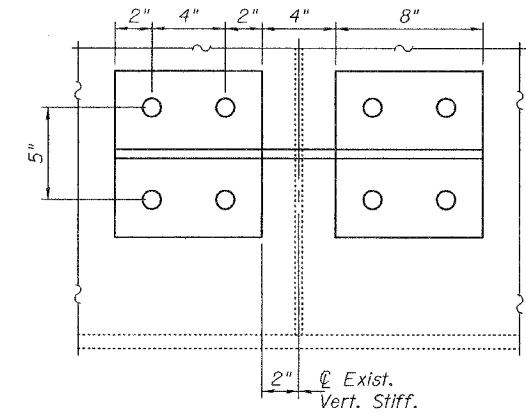


REMOVAL PLAN

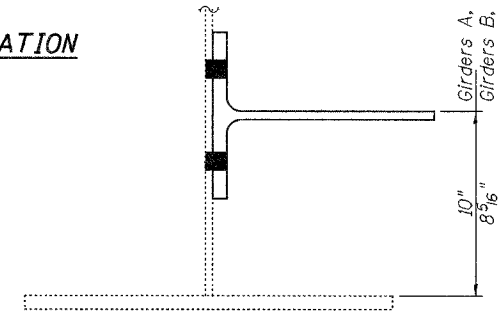
REPAIR DETAIL A
Hatched area indicates \bar{L} removal.



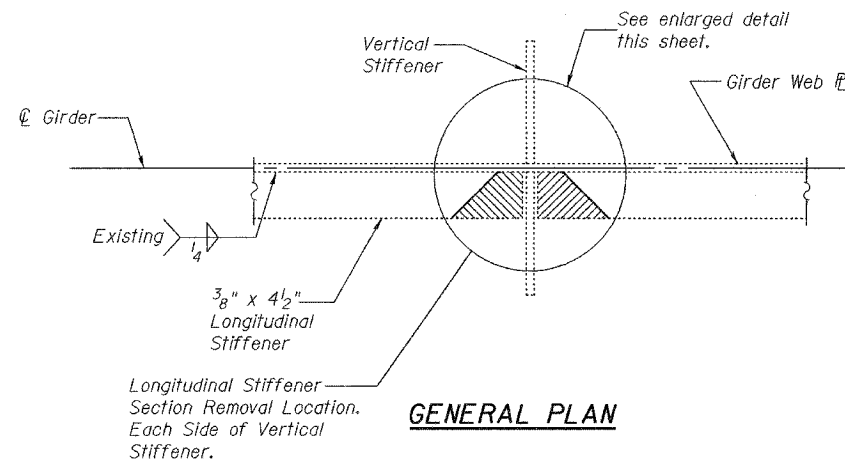
PLAN



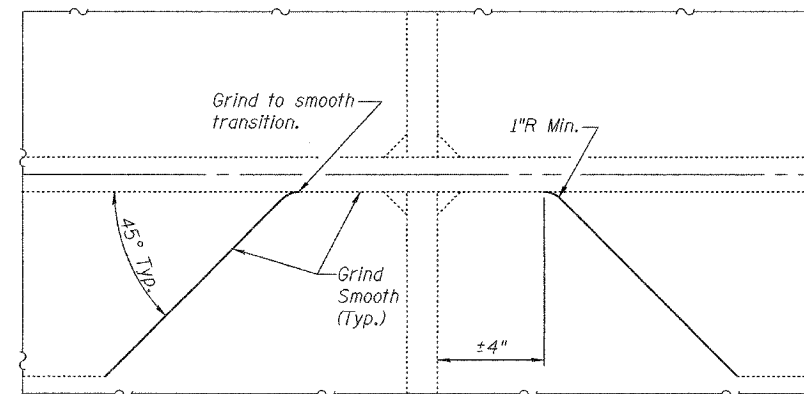
FRONT ELEVATION



SIDE ELEVATION



GENERAL PLAN



ENLARGED DETAIL

REPAIR DETAIL B

Hatched area indicates section removal.
(Showing 2 Locations)

Procedure for Repair Detail

1. Cut existing longitudinal stiffener ± 4 " from face of vertical stiffener and along web as shown, with a 1"R (Min) at Web. The minimum distance from cut to face of web shall be the larger of $\frac{1}{4}$ " or web to plate weld size, with removal of remaining material by grinding as described below. The cut shall be made parallel to the web without angling the cut towards the web. Equipment and method of cutting shall be approved by the Engineer. Any method of removal to be used shall ensure that no damage is done to the existing web, vertical stiffener or welds connecting these elements. Cutting shall be done in a manner such that the point on the opposite face of the web is not damaged. If damage to the paint occurs due to cutting, the damaged area shall be repainted at the contractor's expense and procedures shall be modified to prevent damage at subsequent removal locations.
2. Remove material between cut and web by grinding and grind smooth at web surface and cut end of stiffener. Web \bar{L} surfaces and cut end of stiffener shall have a roughness average (Ra) of 250 μ in. or less. Grinding equipment shall be approved by the Engineer. The grinding operation should not gouge the girder web \bar{L} .
3. The web surface at the modification shall be inspected using dye penetrant or magnetic particle (MT) methods. Any cracks found shall be identified and reported to the Bureau of Bridges and Structures for further disposition.
4. The exposed steel surfaces shall be cleaned and painted using an aluminum epoxy mastic primer according to Article 506.05 of the Standard Specifications.

Each 4" stiffener removal area is to be considered as one retrofit. Accepted above referenced work will be paid for at the contract unit price each for Stiffener Intersection Modification, which price shall include all materials, equipment, labor, cleaning, testing and painting.

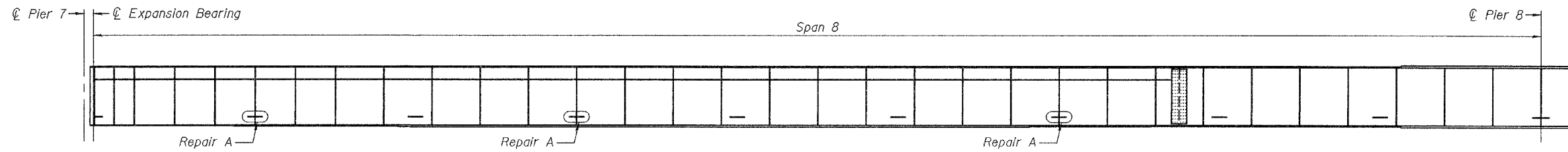
DESIGNED	A.T.H.
CHECKED	P.S.J.
DRAWN	Drew Christopher
CHECKED	A.T.H. P.S.J.

APPROVED	April 24, 2006
EXAMINED	John A. Morris ENGINEER OF STRUCTURAL SERVICES
PASSED	Ralph E. Anderson ENGINEER OF BRIDGES AND STRUCTURES

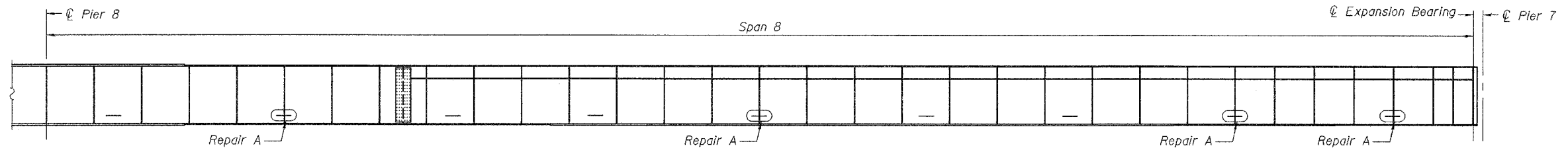
REPAIR DETAILS
F.A.I. RT. 280 OVER
MISSISSIPPI RIVER
ROCK ISLAND COUNTY
SN 081-0106

STATE OF ILLINOIS
DEPARTMENT OF TRANSPORTATION

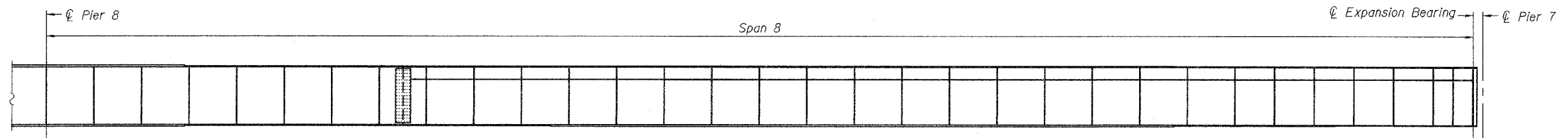
ROUTE NO.	SECTION	COUNTY	TOTAL SHEETS	SHEET NO.	SHEET NO. 5 16 SHEETS
		Rock Island	18	7	
FED. ROAD DIST. NO. 7	ILLINOIS	FED. AID PROJECT-	Contract Number: 64e13		



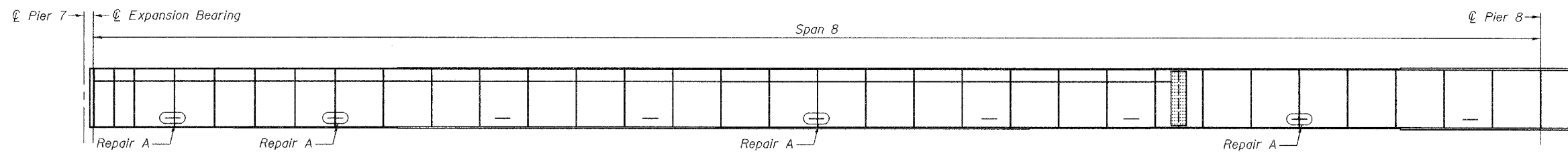
GIRDER A AND F
(Looking North)



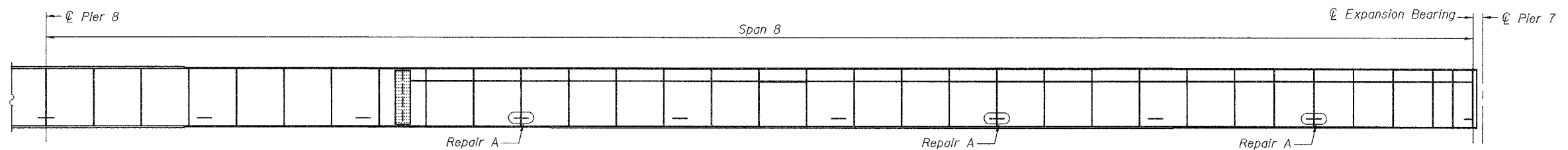
GIRDER B AND G
(Looking South)



GIRDER C AND H
(Looking South)



GIRDER D AND J
(Looking North)



GIRDER E AND K
(Looking South)

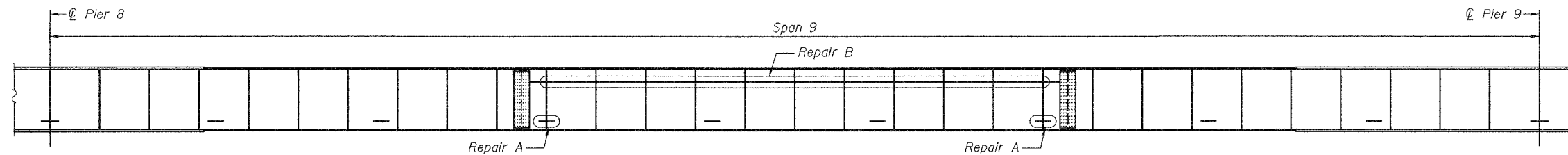
DESIGNED	A.T.H.
CHECKED	P.S.J.
DRAWN	Drew Christopher
CHECKED	A.T.H. P.S.J.

April 24, 2006
 EXAMINED *John A. Morris*
 ENGINEER OF STRUCTURAL SERVICES
 PASSED *Ralph E. Anderson*
 ENGINEER OF BRIDGES AND STRUCTURES

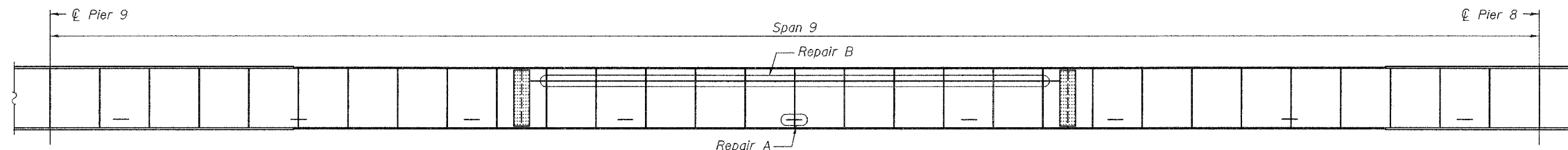
BEAM ELEVATIONS
F.A.I. RT. 280 OVER
MISSISSIPPI RIVER
ROCK ISLAND COUNTY
SN 081-0106

STATE OF ILLINOIS
DEPARTMENT OF TRANSPORTATION

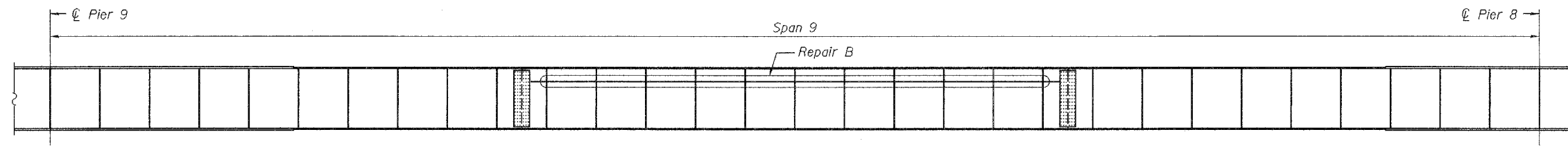
ROUTE NO.	SECTION	COUNTY	TOTAL SHEETS	SHEET NO.	SHEET NO. 6 16 SHEETS
		Rock Island	18	8	
FED. ROAD DIST. NO. 7	ILLINOIS	FED. AID PROJECT	Contract Number: 64413		



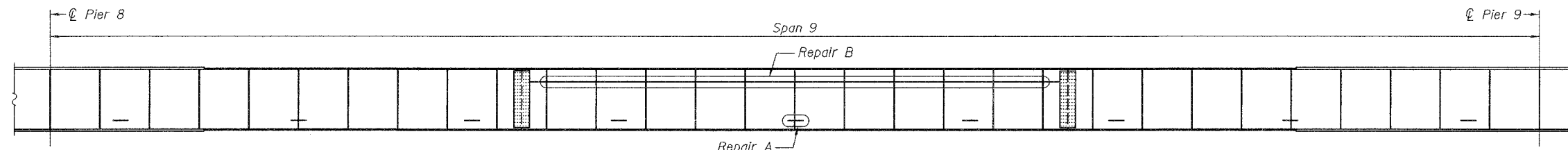
GIRDER A AND F
(Looking North)



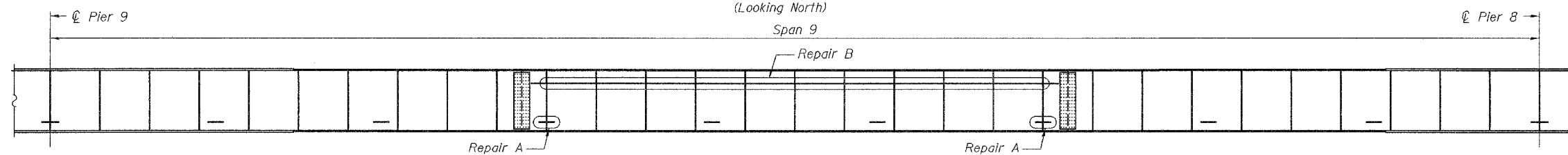
GIRDER B AND G
(Looking South)



GIRDER C AND H
(Looking South)



GIRDER D AND J
(Looking North)



GIRDER E AND K
(Looking South)

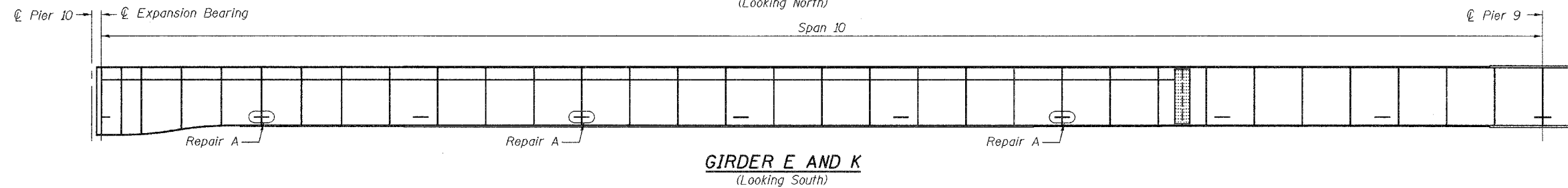
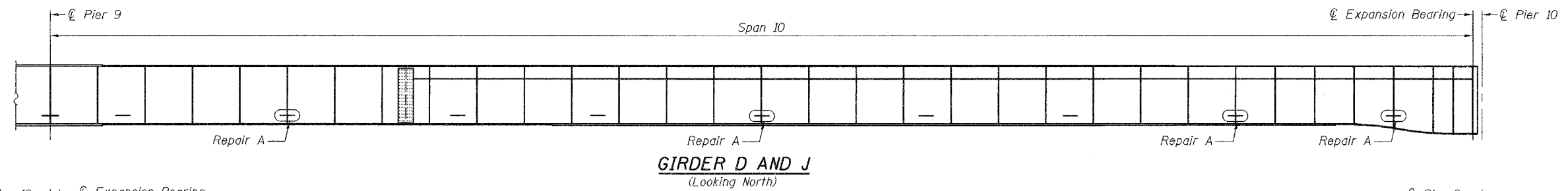
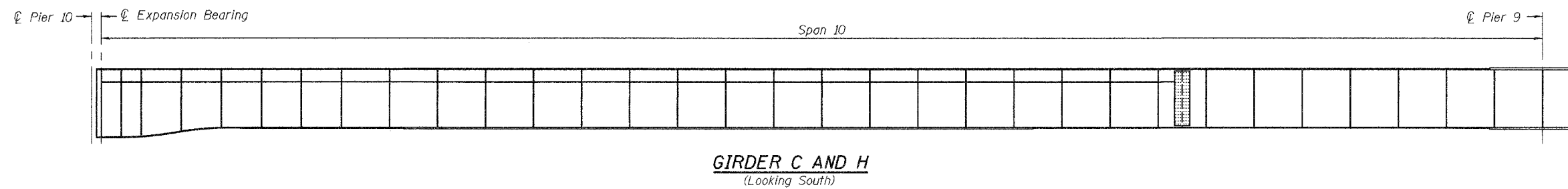
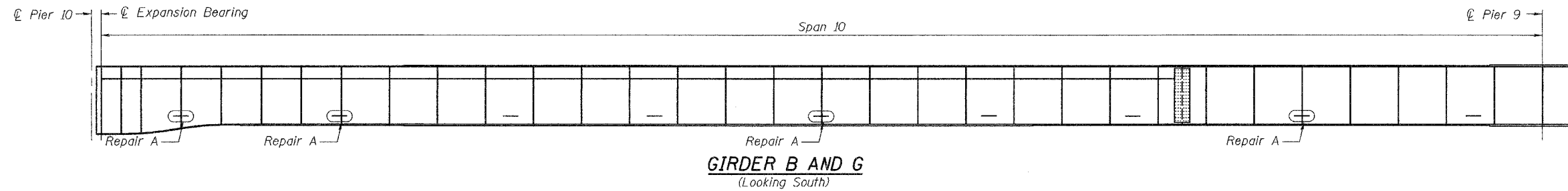
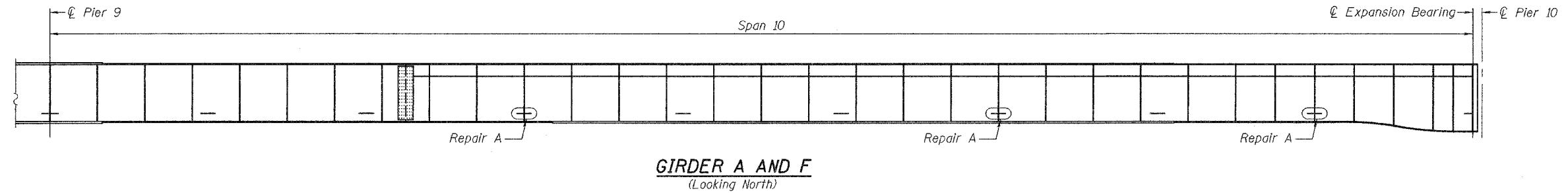
DESIGNED	A.T.H.
CHECKED	P.S.J.
DRAWN	Drew Christopher
CHECKED	A.T.H. P.S.J.

April 24, 2006
 EXAMINED *John A. Morris*
 ENGINEER OF STRUCTURAL SERVICES
 PASSED *Ralph E. Anderson*
 ENGINEER OF BRIDGES AND STRUCTURES

BEAM ELEVATIONS
F.A.I. RT. 280 OVER
MISSISSIPPI RIVER
ROCK ISLAND COUNTY
SN 081-0106

STATE OF ILLINOIS
DEPARTMENT OF TRANSPORTATION

ROUTE NO.	SECTION	COUNTY	TOTAL SHEETS	SHEET NO.	SHEET NO. 7 16 SHEETS
		Rock Island	18	9	
FED. ROAD DIST. NO. 7	ILLINOIS	FED. AID PROJECT	Contract Number: 64C13		



DESIGNED	A.T.H.
CHECKED	P.S.J.
DRAWN	Drew Christopher
CHECKED	A.T.H. P.S.J.

April 24, 2006

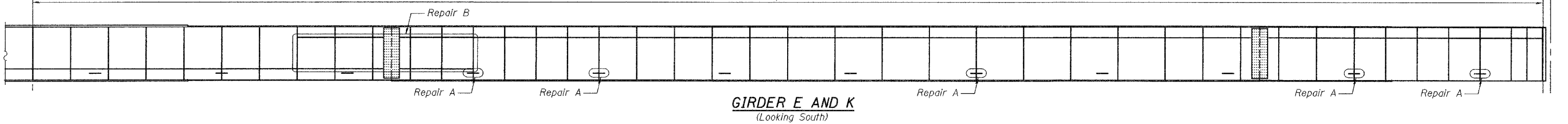
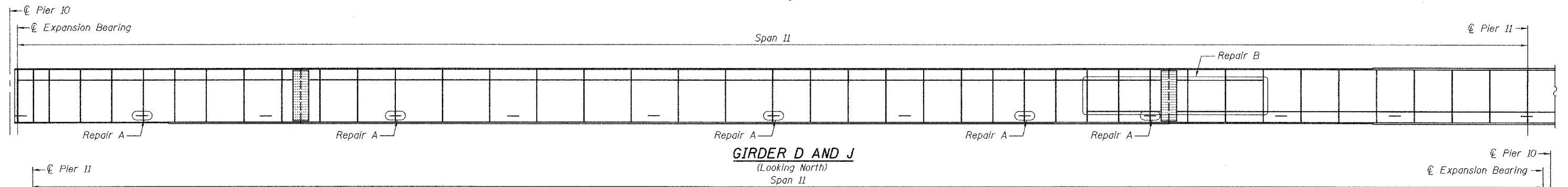
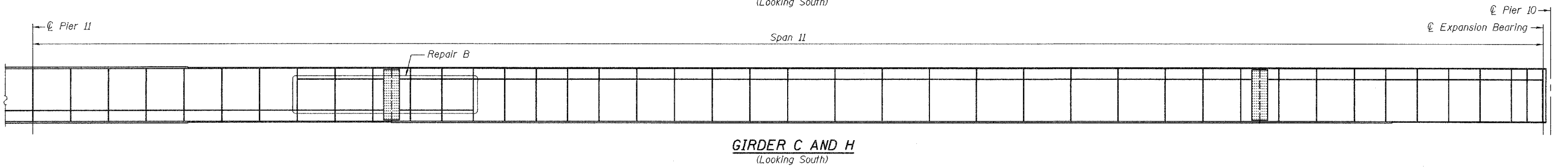
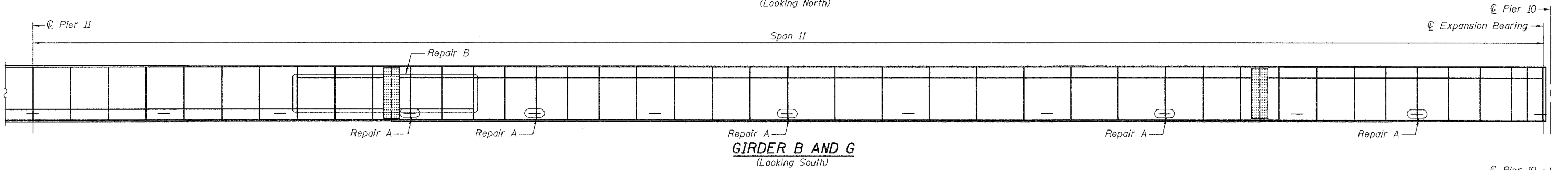
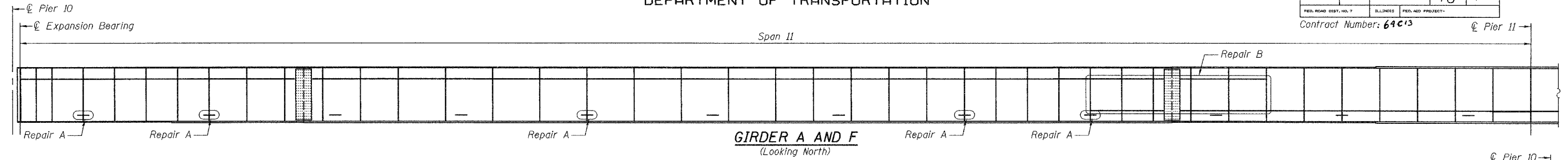
EXAMINED *John A. Morris*
ENGINEER OF STRUCTURAL SERVICES

PASSED *Ralph E. Anderson*
ENGINEER OF BRIDGES AND STRUCTURES

BEAM ELEVATIONS
F.A.I. RT. 280 OVER
MISSISSIPPI RIVER
ROCK ISLAND COUNTY
SN 081-0106

STATE OF ILLINOIS
DEPARTMENT OF TRANSPORTATION

ROUTE NO.	SECTION	COUNTY	TOTAL SHEETS	SHEET NO.	SHEET NO. 8 16 SHEETS
		Rock Island	18	10	
FED. ROAD DIST. NO. 7	ILLINOIS	FED. AID PROJECT	Contract Number: 64C13		



DESIGNED	A.T.H.
CHECKED	P.S.J.
DRAWN	Drew Christopher
CHECKED	A.T.H. P.S.J.

April 24, 2006

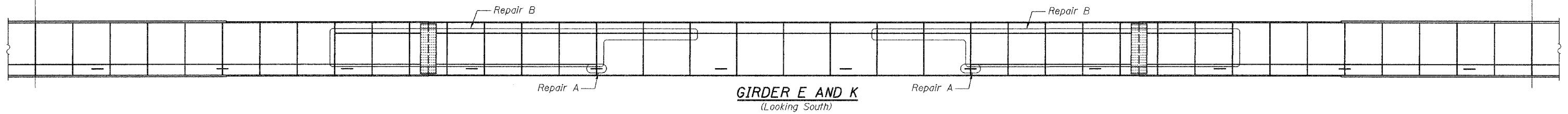
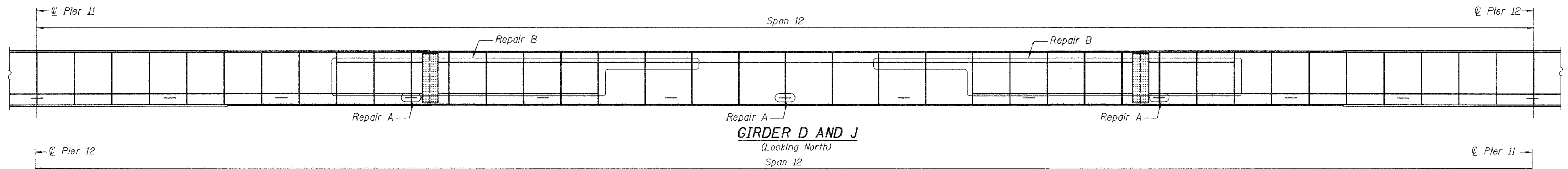
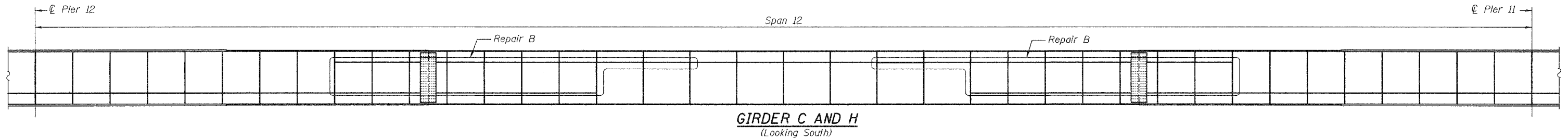
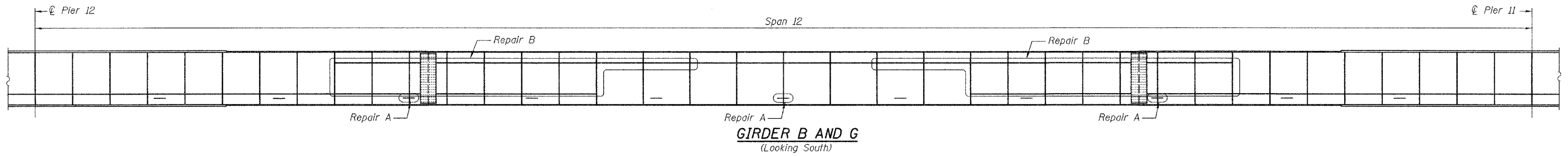
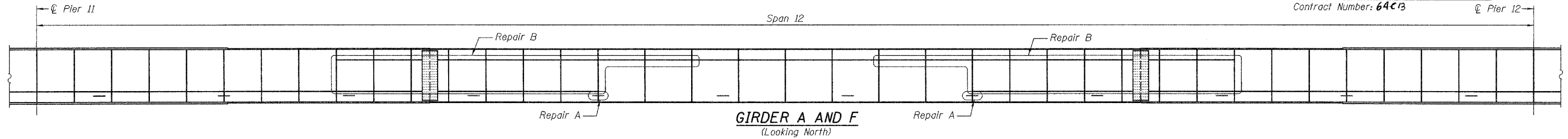
EXAMINED *John A. Morris*
ENGINEER OF STRUCTURAL SERVICES

PASSED *Ralph E. Anderson*
ENGINEER OF BRIDGES AND STRUCTURES

BEAM ELEVATIONS
F.A.I. RT. 280 OVER
MISSISSIPPI RIVER
ROCK ISLAND COUNTY
SN 081-0106

STATE OF ILLINOIS
DEPARTMENT OF TRANSPORTATION

ROUTE NO.	DISTRICT	COUNTY	TOTAL SHEETS	SHEET	SHEET NO. 9
		Rock Island	18	11	16 SHEETS
FED. ROAD DIST. NO. 7	ILLINOIS	FED. AID PROJECT	Contract Number: 64C13		



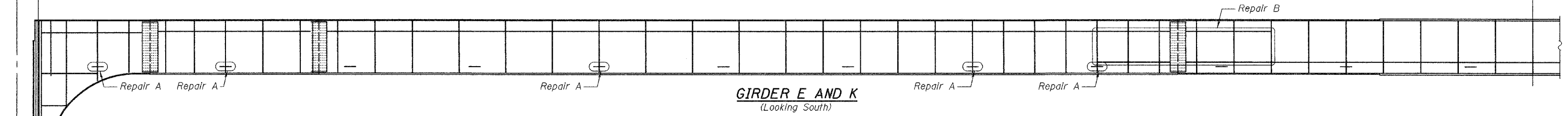
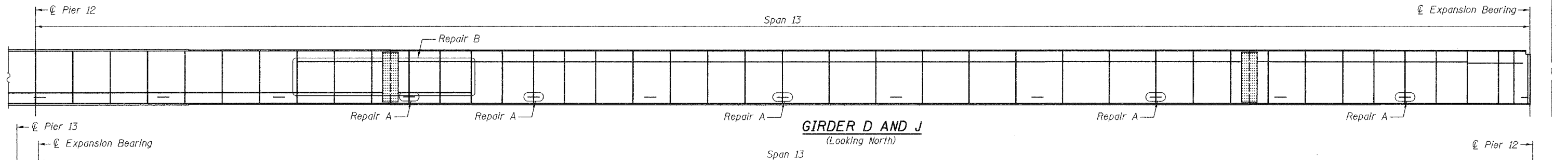
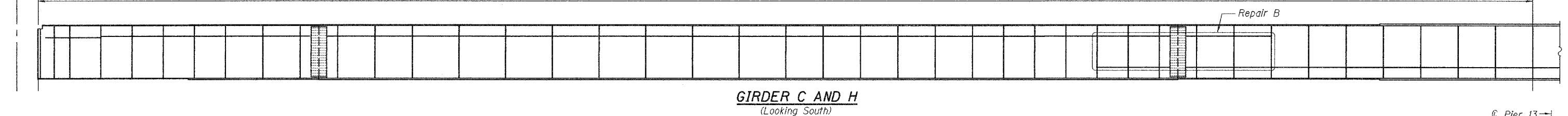
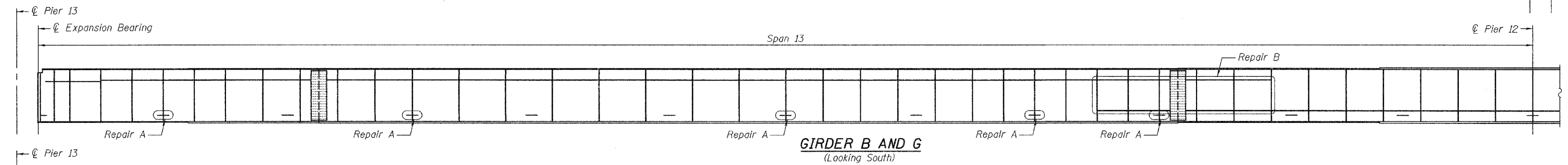
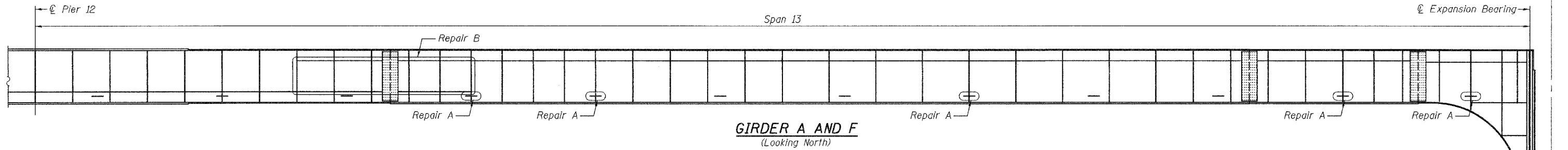
DESIGNED	A.T.H.
CHECKED	P.S.J.
DRAWN	Drew Christopher
CHECKED	A.T.H. P.S.J.

April 24, 2006
 EXAMINED *John A. Morris*
 ENGINEER OF STRUCTURAL SERVICES
 PASSED *Ralph E. Anderson*
 ENGINEER OF BRIDGES AND STRUCTURES

BEAM ELEVATIONS
 F.A.I. RT. 280 OVER
 MISSISSIPPI RIVER
 ROCK ISLAND COUNTY
 SN 081-0106

STATE OF ILLINOIS
DEPARTMENT OF TRANSPORTATION

ROUTE NO.	SECTION	COUNTY	TOTAL SHEETS	SHEET NO.	SHEET NO. 10 16 SHEETS
		Rock Island	18	12	
FED. ROAD DIST. NO. 7	ILLINOIS	FED. AID PROJECT	Contract Number: 64C13		



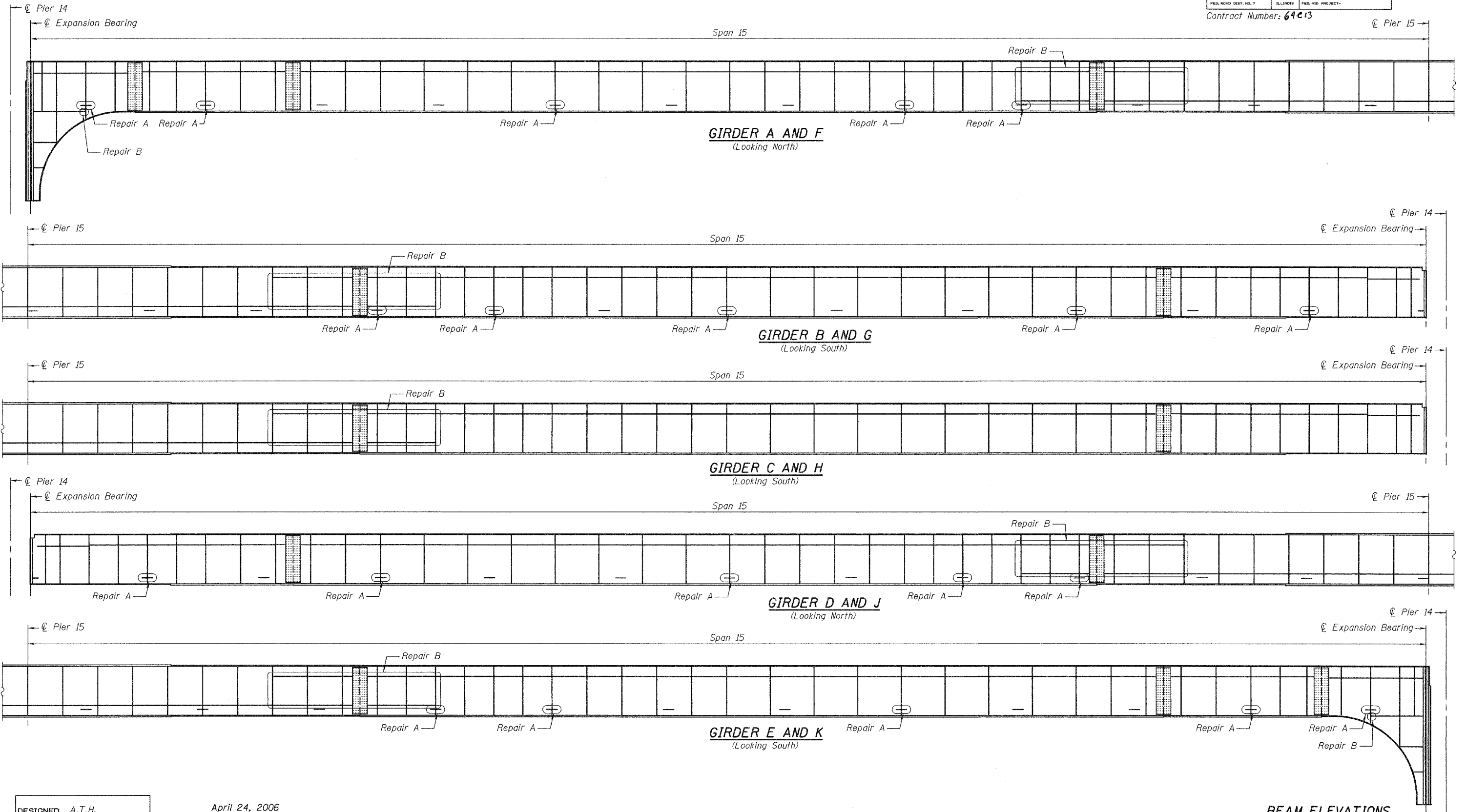
DESIGNED	A.T.H.
CHECKED	P.S.J.
DRAWN	Drew Christopher
CHECKED	A.T.H. P.S.J.

April 24, 2006
 EXAMINED *John A. Morris*
 ENGINEER OF STRUCTURAL SERVICES
 PASSED *Ralph E. Anderson*
 ENGINEER OF BRIDGES AND STRUCTURES

BEAM ELEVATIONS
F.A.I. RT. 280 OVER
MISSISSIPPI RIVER
ROCK ISLAND COUNTY
SN 081-0106

STATE OF ILLINOIS
DEPARTMENT OF TRANSPORTATION

ROUTE NO.	SECTION	COUNTY	TOTAL SHEETS	SHEET	SHEET NO. 11
		Rock Island	18	13	16 SHEETS
FED. ROAD DIST. NO. 7	ILLINOIS	FED. AID PROJECT-	Contract Number: 64C13		



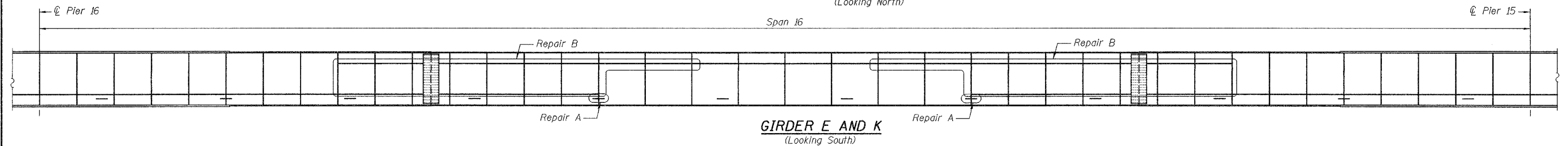
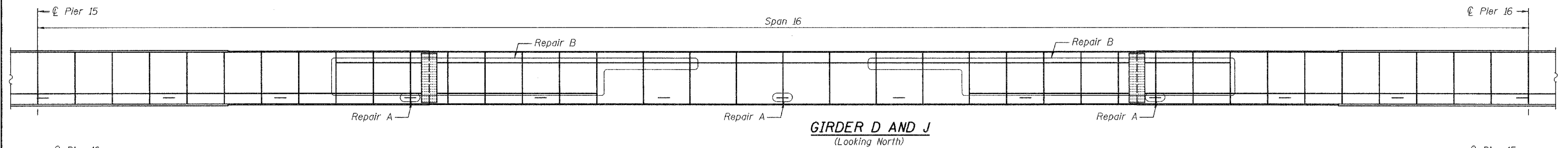
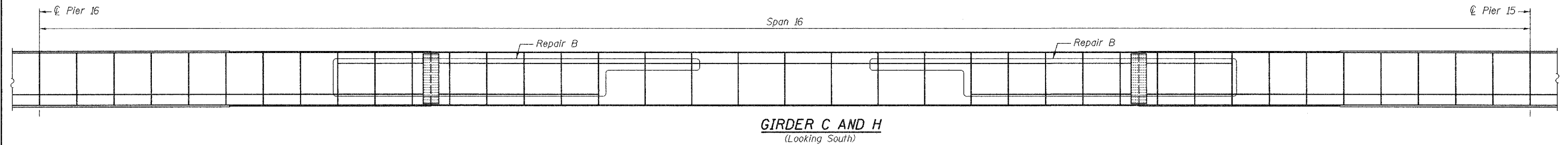
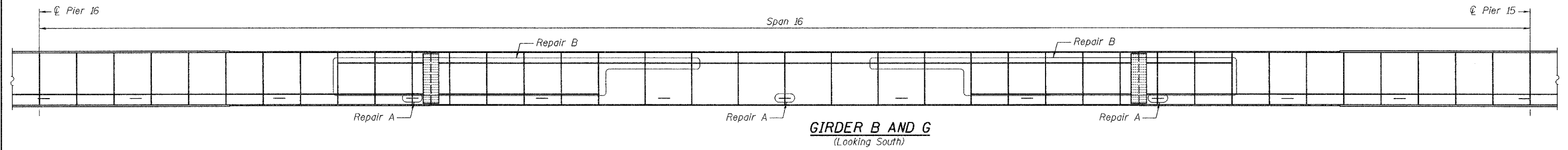
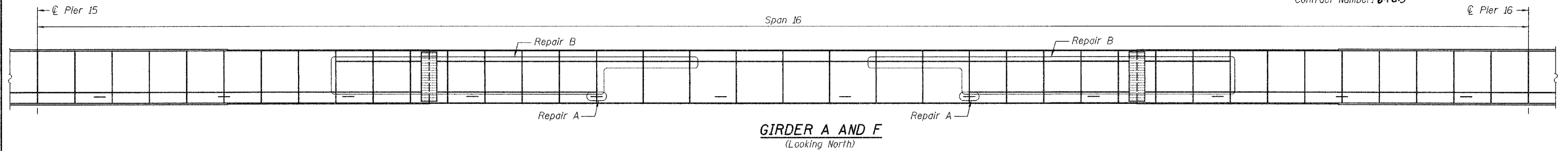
DESIGNED	A.T.H.
CHECKED	P.S.J.
DRAWN	Drew Christopher
CHECKED	A.T.H. P.S.J.

April 24, 2006
 EXAMINED *John A. Morris*
 ENGINEER OF STRUCTURAL SERVICES
 PASSED *Ralph E. Anderson*
 ENGINEER OF BRIDGES AND STRUCTURES

BEAM ELEVATIONS
 F.A.I. RT. 280 OVER
 MISSISSIPPI RIVER
 ROCK ISLAND COUNTY
 SN 081-0106

STATE OF ILLINOIS
DEPARTMENT OF TRANSPORTATION

ROUTE NO.	SECTION	COUNTY	TOTAL SHEETS	SHEET NO.	SHEET NO. 12
		Rock Island	18	14	16 SHEETS
FED. ROAD DIST. NO. 7	ILLINOIS	FED. AID PROJECT	Contract Number: 64C13		



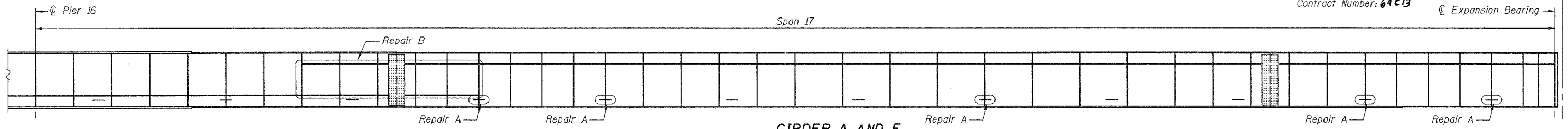
DESIGNED	A.T.H.
CHECKED	P.S.J.
DRAWN	Drew Christopher
CHECKED	A.T.H. P.S.J.

April 24, 2006
 EXAMINED *John A. Morris*
 ENGINEER OF STRUCTURAL SERVICES
 PASSED *Ralph E. Anderson*
 ENGINEER OF BRIDGES AND STRUCTURES

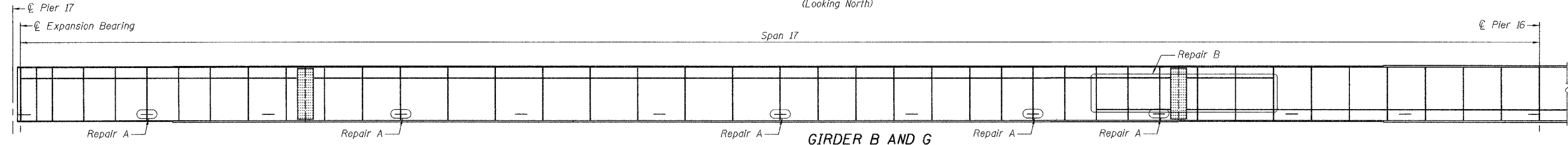
BEAM ELEVATIONS
F.A.I. RT. 280 OVER
MISSISSIPPI RIVER
ROCK ISLAND COUNTY
SN 081-0106

STATE OF ILLINOIS
DEPARTMENT OF TRANSPORTATION

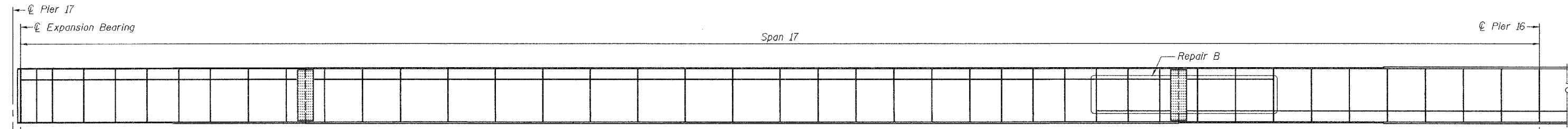
ROUTE NO.	SECTION	COUNTY	SHEET NO.	SHEET NO.
		Rock Island	18	15
SHEET NO. 13 16 SHEETS				
FED. ROAD DIST. NO. 7	B.LINES	FED. AID PROJECT	Contract Number: 6A13	



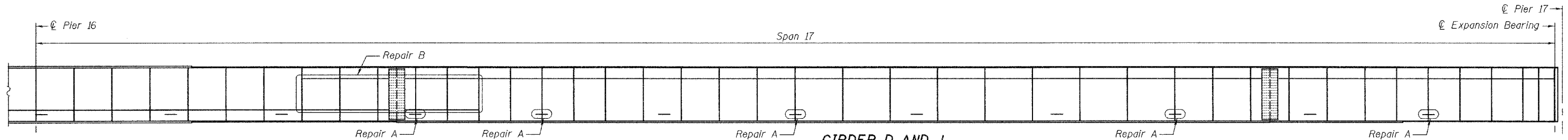
GIRDER A AND F
(Looking North)



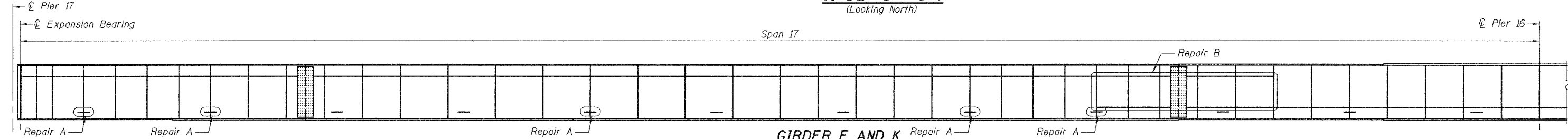
GIRDER B AND G
(Looking South)



GIRDER C AND H
(Looking South)



GIRDER D AND J
(Looking North)



GIRDER E AND K
(Looking South)

DESIGNED	A.T.H.
CHECKED	P.S.J.
DRAWN	Drew Christopher
CHECKED	A.T.H. P.S.J.

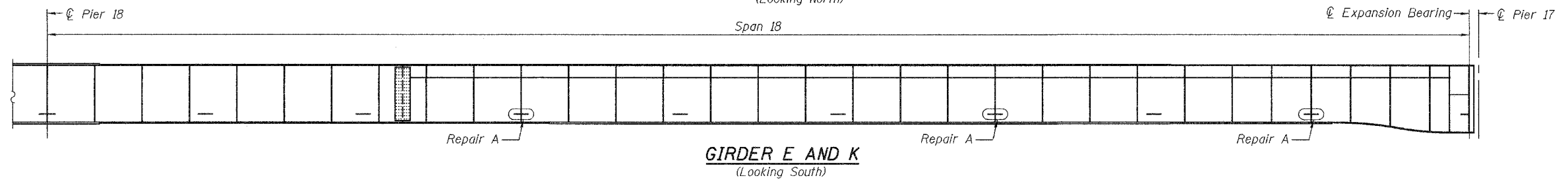
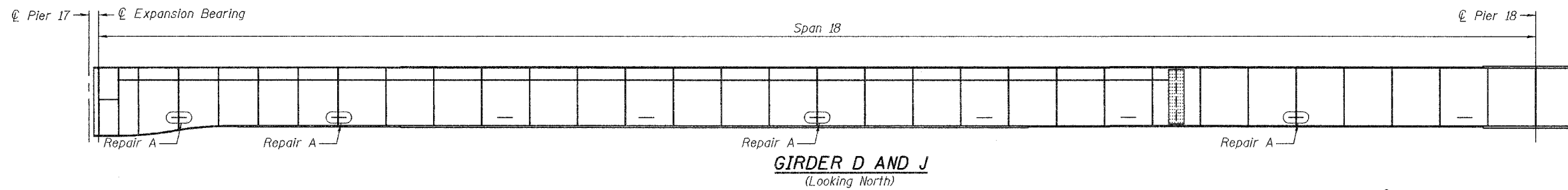
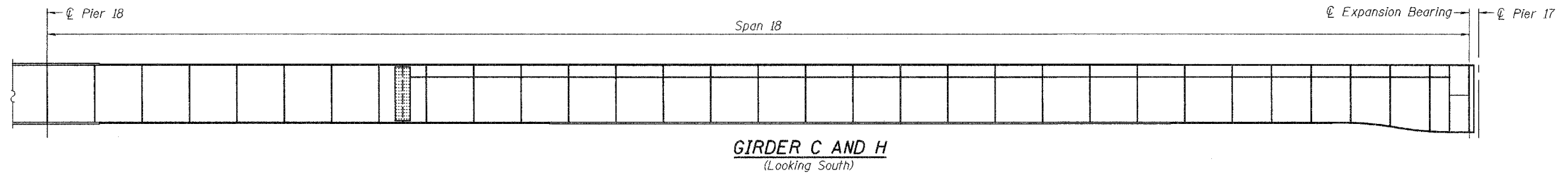
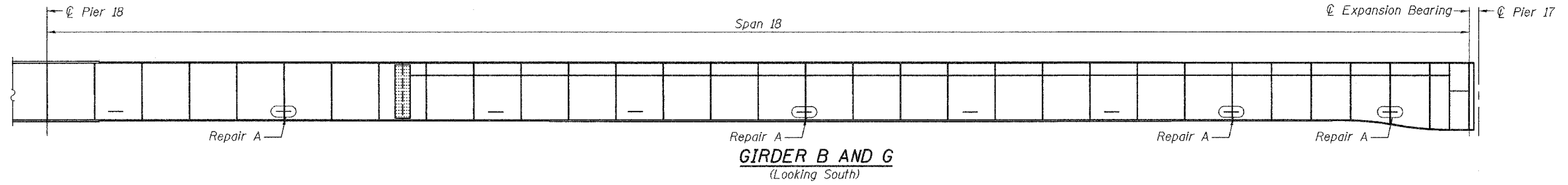
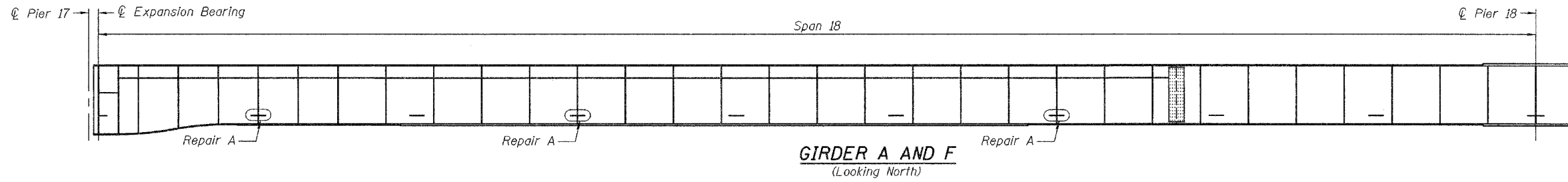
April 24, 2006
 EXAMINED *John A. Morris*
 ENGINEER OF STRUCTURAL SERVICES
 PASSED *Ralph E. Anderson*
 ENGINEER OF BRIDGES AND STRUCTURES

BEAM ELEVATIONS
F.A.I. RT. 280 OVER
MISSISSIPPI RIVER
ROCK ISLAND COUNTY
SN 081-0106

STATE OF ILLINOIS
DEPARTMENT OF TRANSPORTATION

ROUTE NO.	SECTION	COUNTY	TOTAL SHEETS	SHEET NO.	SHEET NO. 14 16 SHEETS
		Rock Island	18	16	
FED. ROAD DIST. NO. 7	BUILDINGS	FED. AID PROJECT			

Contract Number: 69C13



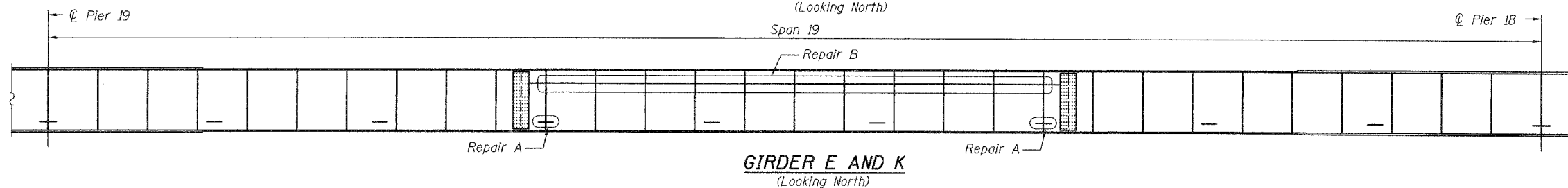
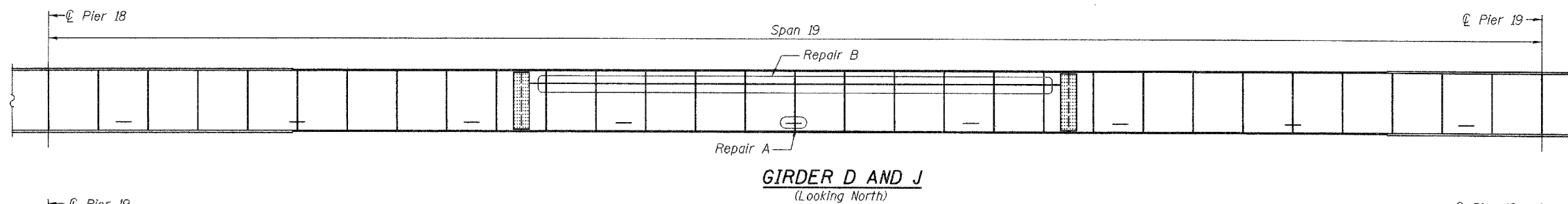
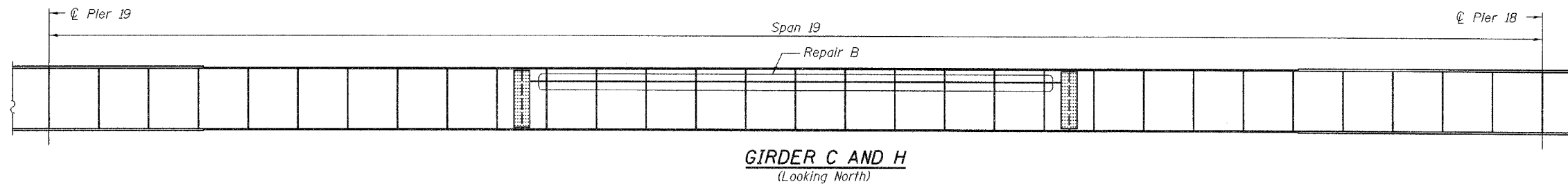
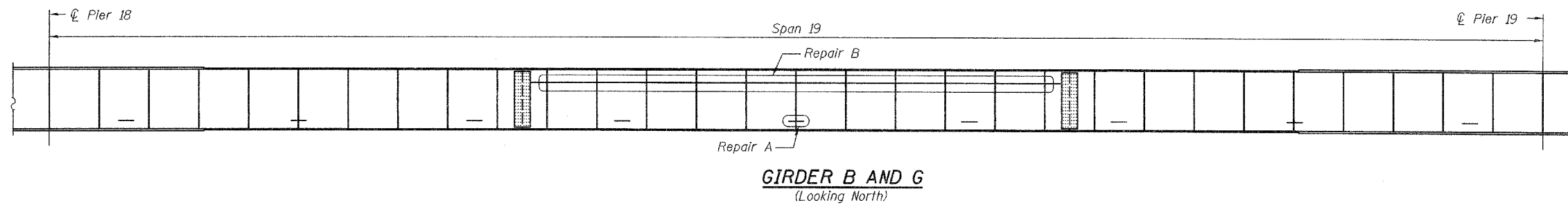
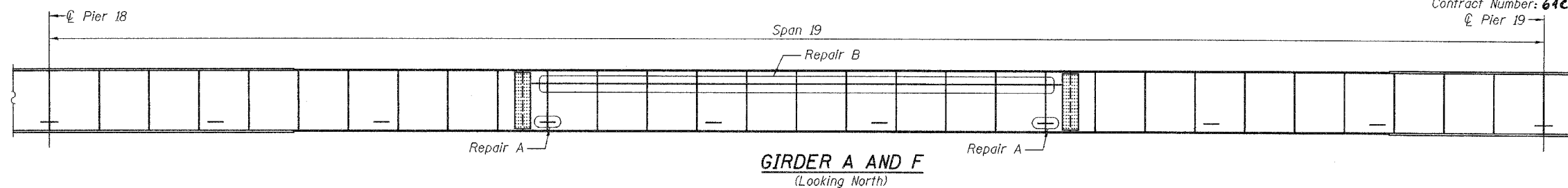
DESIGNED	A.T.H.
CHECKED	P.S.J.
DRAWN	Drew Christopher
CHECKED	A.T.H. P.S.J.

April 24, 2006
 EXAMINED *John A. Morris*
ENGINEER OF STRUCTURAL SERVICES
 PASSED *Ralph E. Anderson*
ENGINEER OF BRIDGES AND STRUCTURES

BEAM ELEVATIONS
F.A.I. RT. 280 OVER
MISSISSIPPI RIVER
ROCK ISLAND COUNTY
SN 081-0106

STATE OF ILLINOIS
DEPARTMENT OF TRANSPORTATION

ROUTE NO.	SECTION	COUNTY	TOTAL SHEETS	SHEET NO.	SHEET NO. 15 16 SHEETS
		Rock Island	18	17	
FED. ROAD DIST. NO. 7	ILLINOIS	FED. AID PROJECT-	Contract Number: 64C13		



DESIGNED	A.T.H.
CHECKED	P.S.J.
DRAWN	Drew Christopher
CHECKED	A.T.H. P.S.J.

April 24, 2006

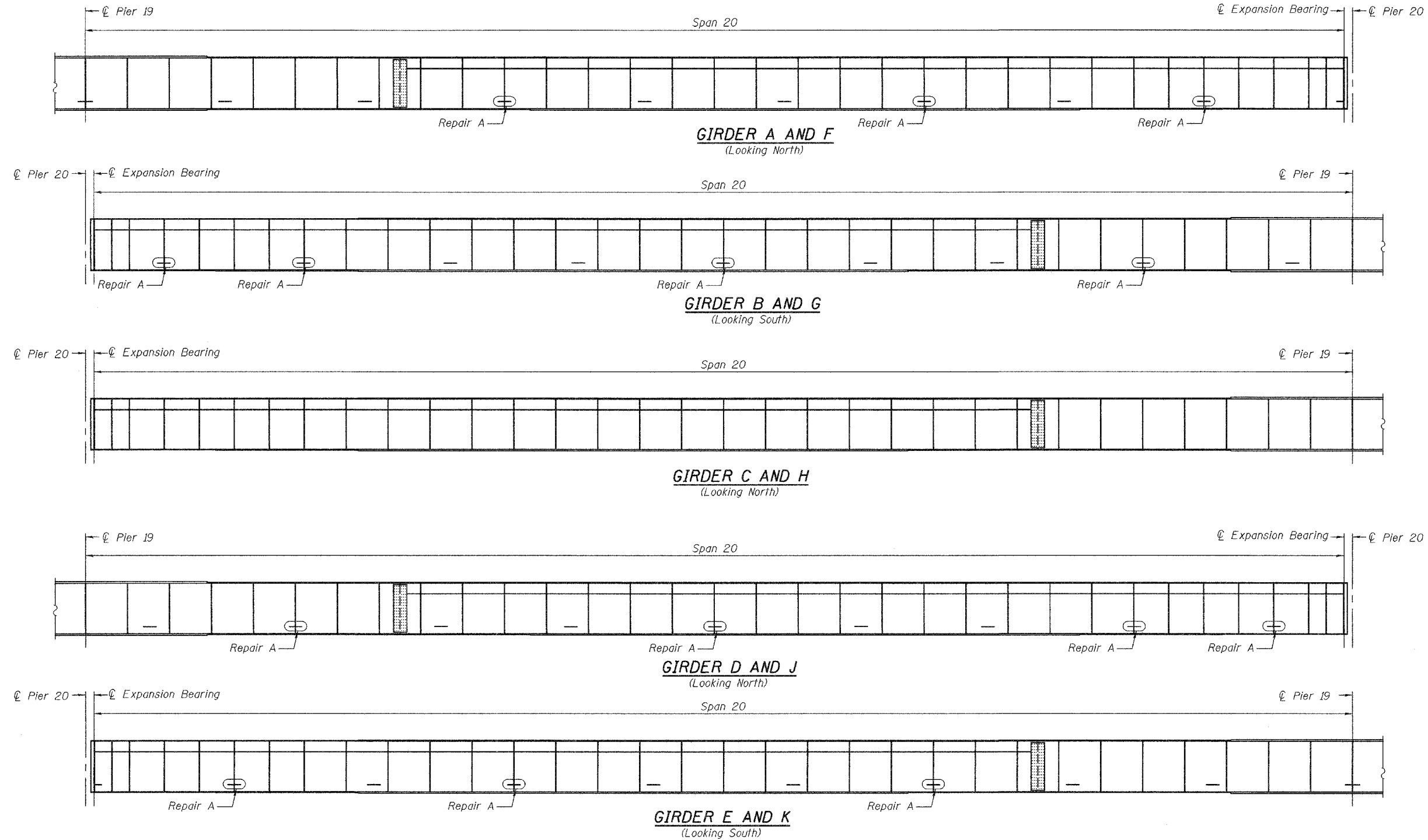
EXAMINED *John A. Morris*
ENGINEER OF STRUCTURAL SERVICES

PASSED *Ralph E. Anderson*
ENGINEER OF BRIDGES AND STRUCTURES

BEAM ELEVATIONS
F.A.I. RT. 280 OVER
MISSISSIPPI RIVER
ROCK ISLAND COUNTY
SN 081-0106

STATE OF ILLINOIS
DEPARTMENT OF TRANSPORTATION

ROUTE NO.	SECTION	COUNTY	TOTAL SHEETS	SHEET NO.	SHEET NO. 16 16 SHEETS
		Rock Island	18	18	
FED. ROAD DIST. NO. 7	ILLINOIS	FED. AID PROJECT-	Contract Number: 64C13		



DESIGNED	A.T.H.
CHECKED	P.S.J.
DRAWN	Drew Christopher
CHECKED	A.T.H. P.S.J.

April 24, 2006

EXAMINED *John A. Morris*
ENGINEER OF STRUCTURAL SERVICES

PASSED *Ralph E. Anderson*
ENGINEER OF BRIDGES AND STRUCTURES

BEAM ELEVATIONS
F.A.I. RT. 280 OVER
MISSISSIPPI RIVER
ROCK ISLAND COUNTY
SN 081-0106