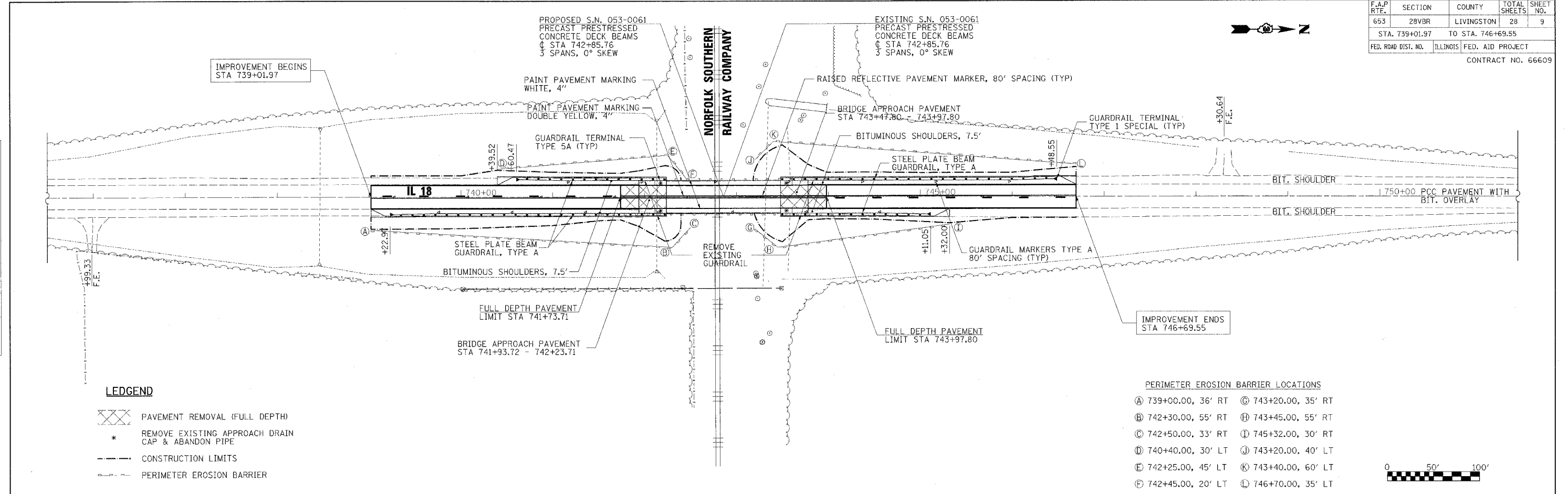


F.A.P. RTE.	SECTION	COUNTY	TOTAL SHEETS	SHEET NO.
653	28VBR	LIVINGSTON	28	9
STA. 739+01.97		TO STA. 746+69.55		
FED. ROAD DIST. NO.		ILLINOIS FED. AID PROJECT		
CONTRACT NO. 66609				

DATE	BY	REVISION

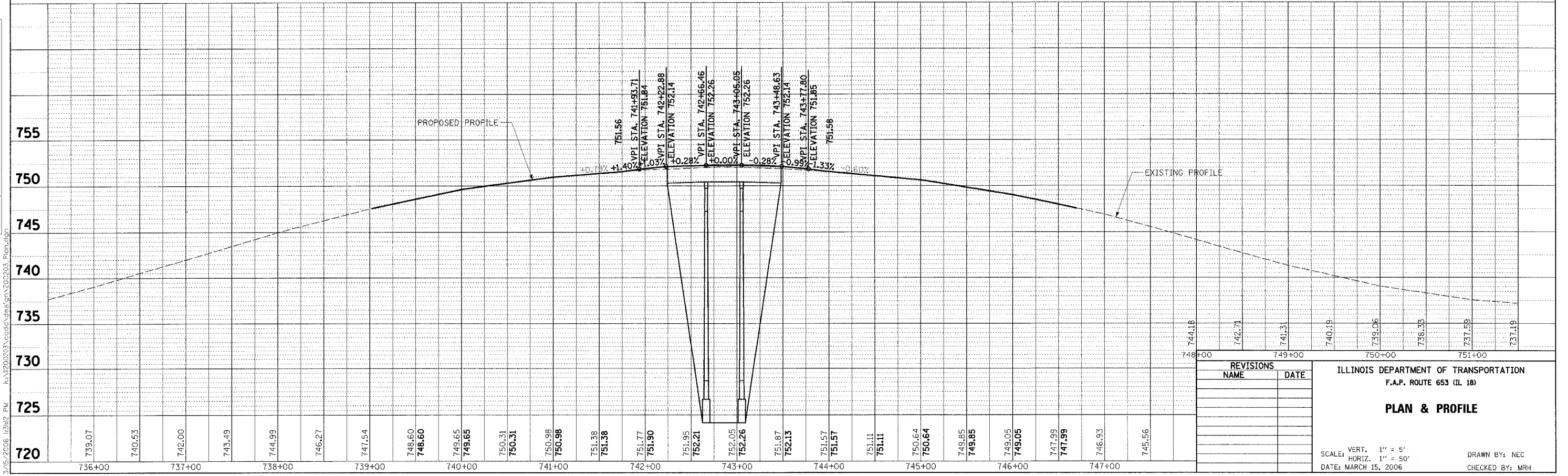
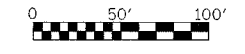
DATE	BY	REVISION



**LEGEND**

- PAVEMENT REMOVAL (FULL DEPTH)
- REMOVE EXISTING APPROACH DRAIN CAP & ABANDON PIPE
- CONSTRUCTION LIMITS
- PERIMETER EROSION BARRIER

- PERIMETER EROSION BARRIER LOCATIONS**
- (A) 739+00.00, 36' RT
  - (B) 742+30.00, 55' RT
  - (C) 742+50.00, 33' RT
  - (D) 740+40.00, 30' LT
  - (E) 742+25.00, 45' LT
  - (F) 742+45.00, 20' LT
  - (G) 743+20.00, 35' RT
  - (H) 743+45.00, 55' RT
  - (I) 745+32.00, 30' RT
  - (J) 743+20.00, 40' LT
  - (K) 743+40.00, 60' LT
  - (L) 746+70.00, 35' LT



REVISIONS	NAME	DATE

ILLINOIS DEPARTMENT OF TRANSPORTATION  
F.A.P. ROUTE 653 (IL 18)

**PLAN & PROFILE**

SCALE: VERT. 1" = 5'  
HORIZ. 1" = 50'

DATE: MARCH 15, 2006

DRAWN BY: NEC  
CHECKED BY: MRH