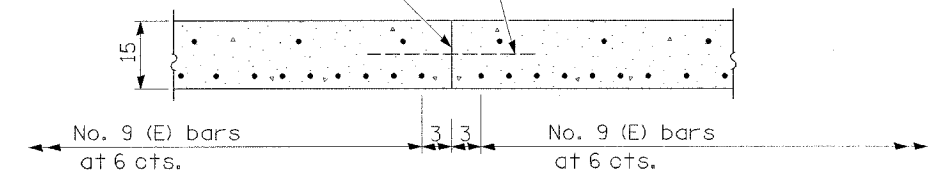


**SECTION D-D**

(See Plan for Dimensions not shown)  
All reinforcement bars shall be epoxy coated.

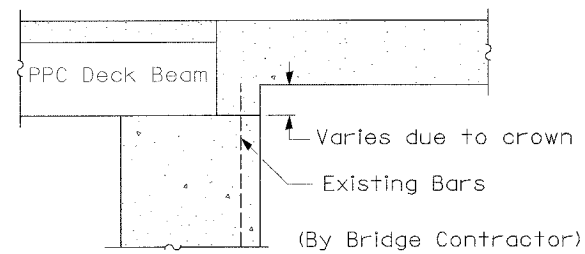
\*\* Slope same as adjacent shoulder slope.

Longitudinal Construction Joint in accordance with details shown on Standard 420001.

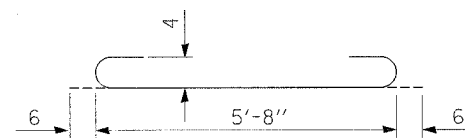


**OPTIONAL LONGITUDINAL CONSTRUCTION JOINT**

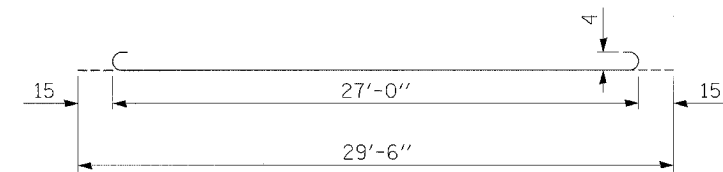
As approved by the Engineer, the Contractor may elect to reduce the widths of pour by use of the Optional Longitudinal Construction Joint shown. Joints shall be located at the edge of a traffic lane.



**SECTION E-E**



**BAR a2**



**BAR a**

**DESIGN STRESSES**

$f_y = 60,000$  p.s.i.  
 $f'_c = 3,500$  p.s.i.  
 $n = 8.5$

All dimensions are in inches unless otherwise shown.

REVISIONS	
NAME	DATE

ILLINOIS DEPARTMENT OF TRANSPORTATION  
F.A.P. ROUTE 653 (IL 18)  
**BRIDGE APPROACH PAVEMENT DETAILS**

SCALE: VERT. \_\_\_\_\_  
HORIZ. \_\_\_\_\_  
DATE: MARCH 15, 2006  
DRAWN BY: NEC  
CHECKED BY: MRH

3/15/2006 4:32:58 PM K:\200203\cadd\design\200203\_APP51AB.dgn