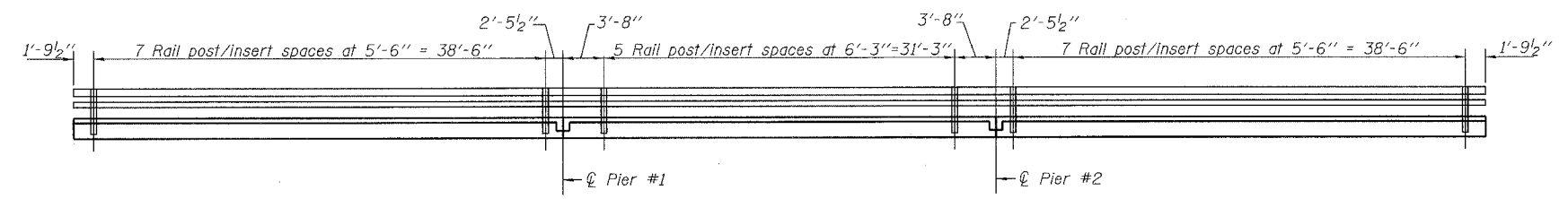
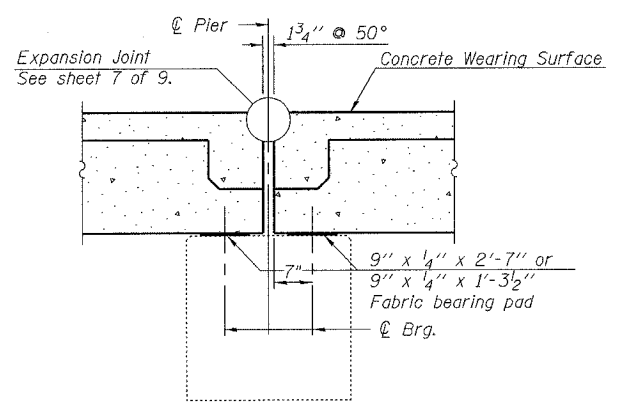


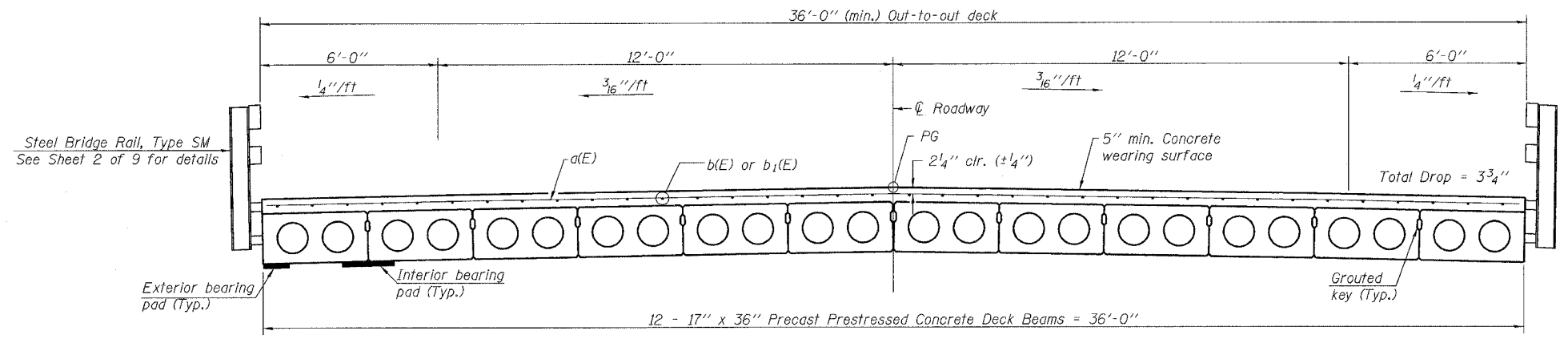
SECTION THRU ABUTMENTS



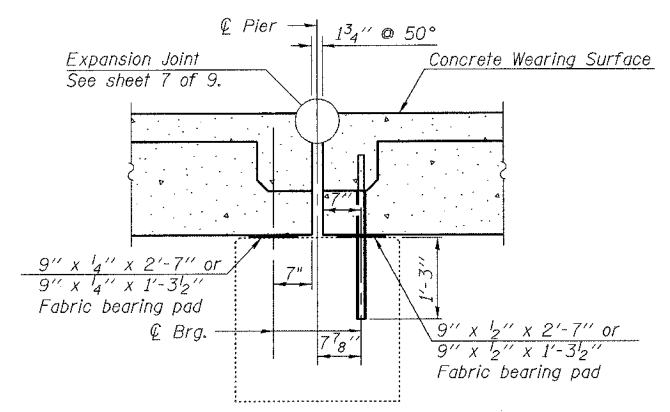
RAIL POST SPACING



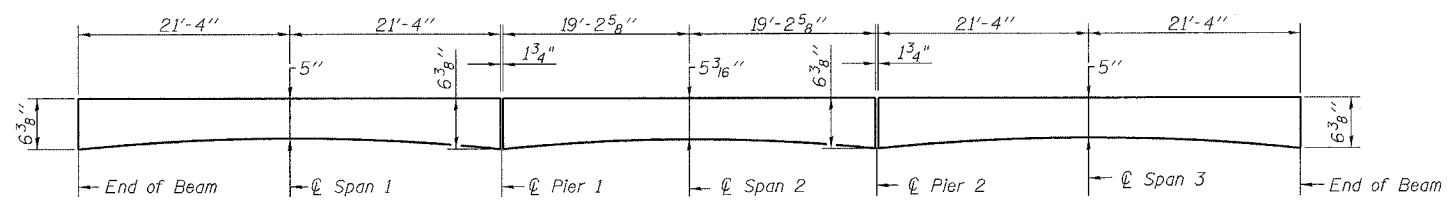
SECTION THRU PIER #2



CROSS SECTION



SECTION THRU PIER #1



REINFORCED CONCRETE WEARING SURFACE PROFILE

(Concrete Wearing Surface at breakout at expansion end of beams not shown.)

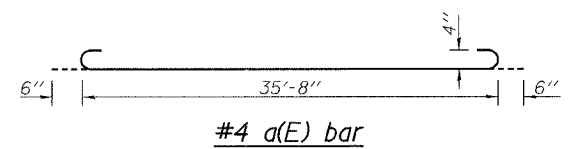
SUPERSTRUCTURE BILL OF MATERIAL

Bar	No.	Size	Length	Shape
a(E)	125	#4	36'-8"	U
a1(E)	12	#5	35'-8"	—
b(E)	144	#4	22'-4"	—
b1(E)	36	#4	38'-4"	—
Reinforcement Bars, Epoxy Coated			Pound	6580
Concrete Wearing Surface, 5"			Sq. Yd.	495.2

Reinforcement bars designated (E) shall be epoxy coated.
Minimum lap length for #5 bars = 2'-2".

Notes:
After beams have been erected, holes shall be drilled into substructure and anchor dowels placed. Dowel holes shall be filled with non-shrink grout to top of beam and allowed to cure min. 24 hrs. prior to grouting the shear keys.
All horizontal dimensions are at right angles to beam ends. See sheet 5 of 9 for bearing pad details.

Ends of beams shall be aligned at the expansion joints. Any lineal variation in the beam lengths shall be placed at the fixed joint.
Concrete wearing surface (including breakout) to be poured after grouting the shear keys.
Dowel rods drilled in cap are included in the cost of Precast Prestressed Concrete Deck Beams (17" Depth)



rjngroup
Excellence through Ownership
200 West Front Street
Wheaton, IL 60187

ILLINOIS DEPARTMENT OF TRANSPORTATION
SUPERSTRUCTURE DETAILS
IL-18 OVER NORFOLK SOUTHERN R.R.
FAP RTE 653 - SECTION 28 VBR
LIVINGSTON COUNTY
STATION 742+85.76
STRUCTURE NO. 053-0061
DATE: 3-15-2006
DRAWN BY JMT
CHECKED BY WJV