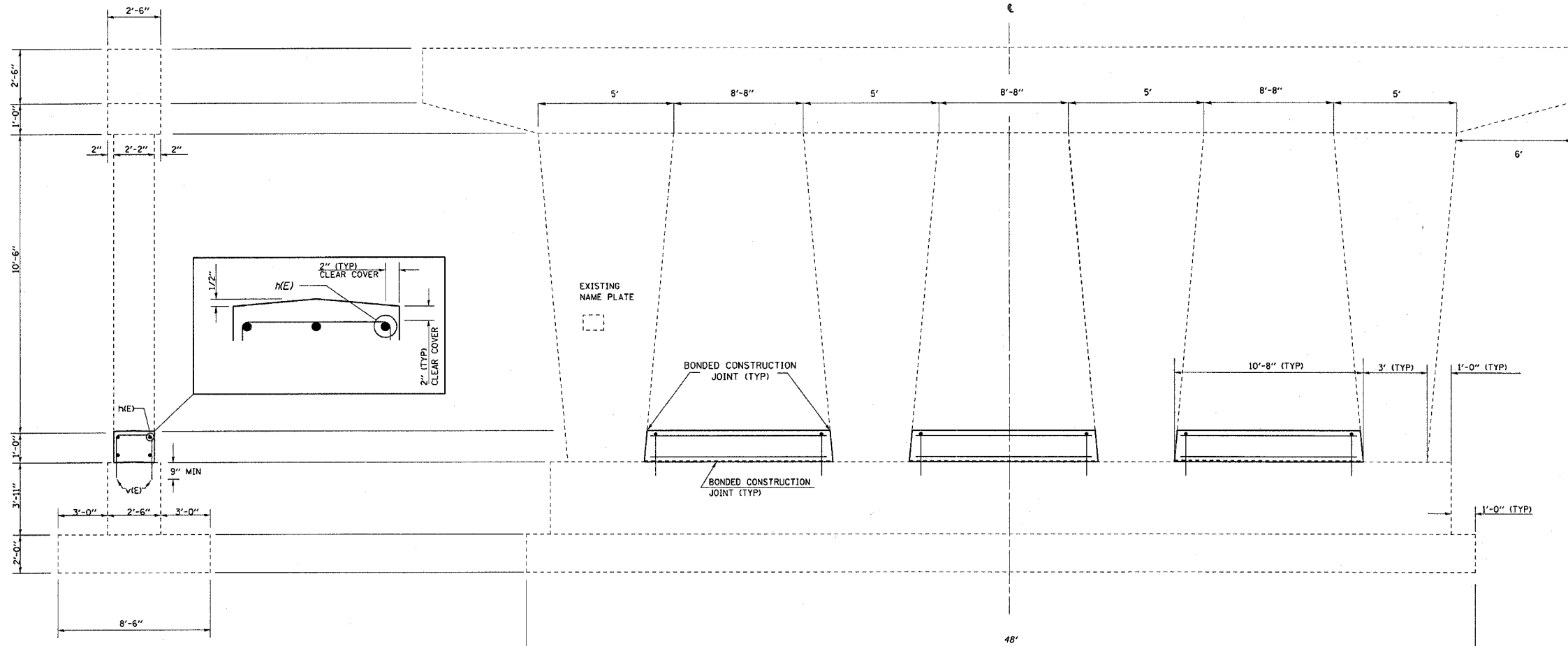
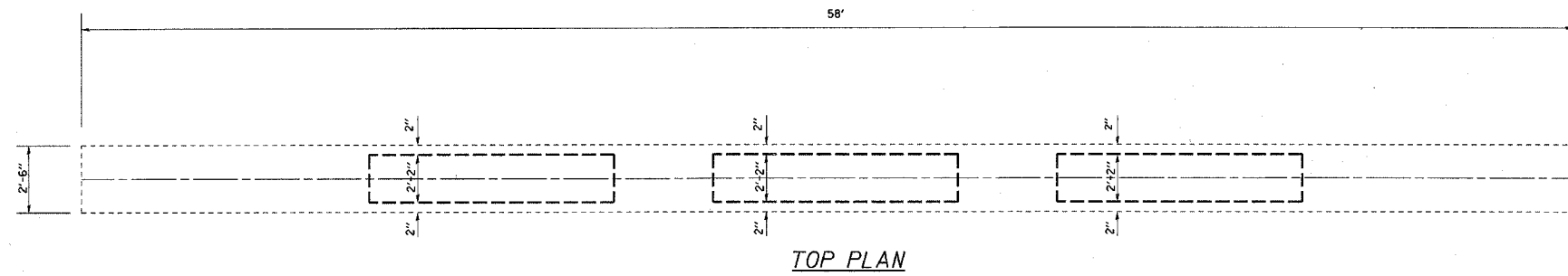


F. A. L. SITE	SECTION	COUNTY	TOTAL SHEETS	SHEET NO.
74	*	**	28	7
STA.		TO STA.		
FED. ROAD DIST. NO.		BIDDING	FED. AID PROJECT	

* D3 INTERSTATE SAFETY 2007-2
 ** FORD, IROQUOIS, KANKAKEE

NOTE:

- 1.) DRILL & EPOXY GROUT V(E) BARS IN 9" (MIN) DRILLED HOLES ACCORDING TO SECTION 584 OF THE STANDARD SPECIFICATIONS.
- 2.) USE EXISTING PLANS INCLUDED TO AVOIDED DAMAGING LONGITUDINAL REINFORCEMENT IN THE EXISTING CRASHWALL WHILE DRILLING & EPOXY GROUTING V(E) BARS.

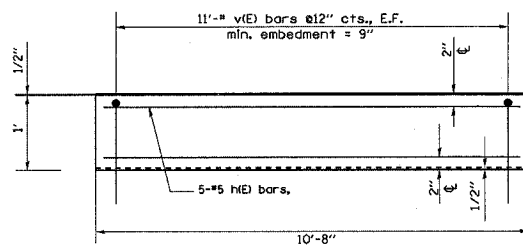


END ELEVATION

ELEVATION
LOOKING EAST

DESIGN STRESSES (NEW)

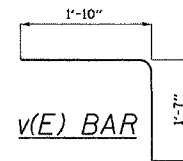
f_c = 3,500 psi
 F_y = 60,000 PSI (REINFORCEMENT)



CRASH WALL DETAIL

BILL OF MATERIAL

Bar	No.	Size	Length	Shape
n(E)	15	#5	10'-4"	—
v(E)	66	#5	3'-5"	└
Item	Unit	Quantity		
Concrete Structures	Cu. Yds.	2.6		
Reinforcement Bars, Epoxy Coated	Pound	400		



FAI RTE 57
 SEC D3 INTERSTATE SAFETY 2007-2
 FORD CO / STA 329+98.30
 SN 027-0010 NB

PIER CRASH WALL EXTENSION