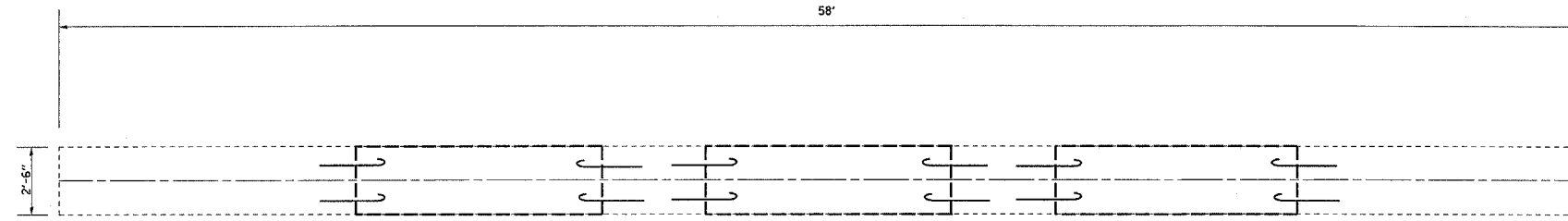


| F. A. I. R.T.E. | SECTION | COUNTY | TOTAL SHEETS | SHEET NO. |
|-----------------------|---------|----------|------------------|-----------|
| 74 | * | ** | 28 | 8 |
| STA. | | TO STA. | | |
| FED. ROAD DIST. NO. - | | ILLINOIS | FED. AID PROJECT | |

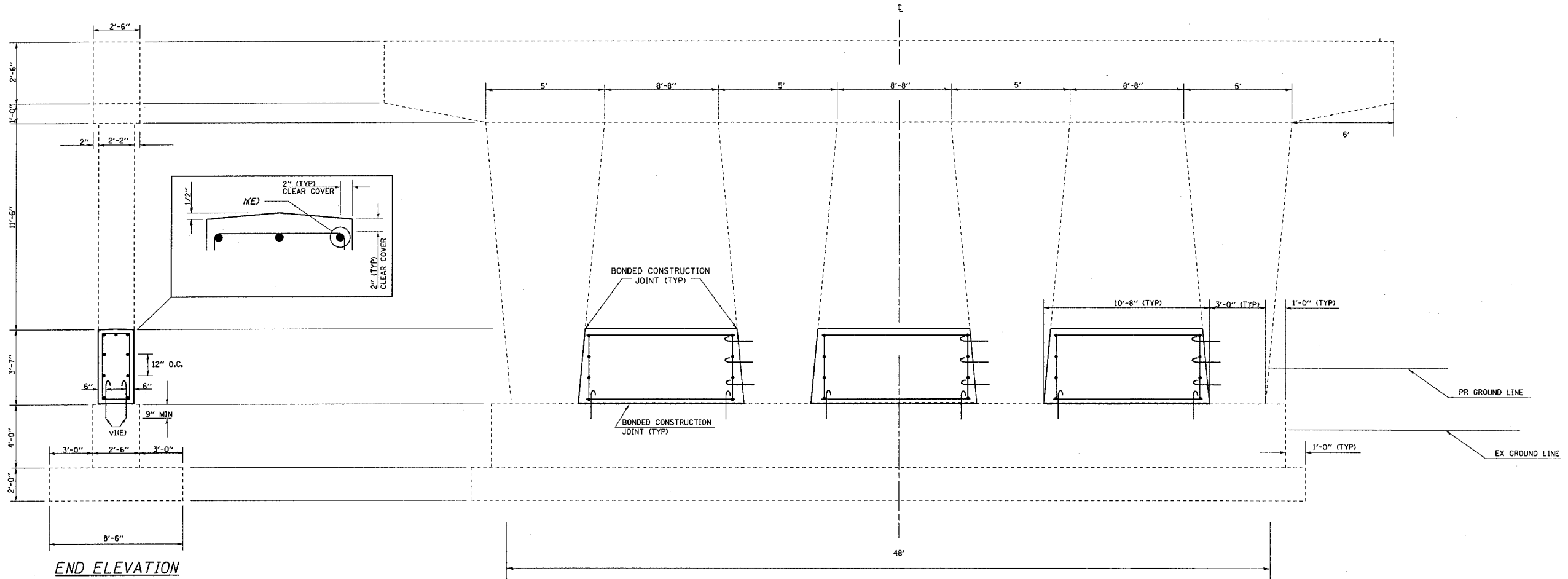
* D3 INTERSTATE SAFETY 2007-2
 ** FORD, IROQUOIS, KANKAKEE

NOTE:

- 1.) DRILL & EPOXY GROUT v(E) BARS IN 9" (MIN) DRILLED HOLES ACCORDING TO SECTION 584 OF THE STANDARD SPECIFICATIONS.
- 2.) USE EXISTING PLANS INCLUDED TO AVOIDED DAMAGING LONGITUDINAL REINFORCEMENT OR VERTICAL REINFORCEMENT IN THE COLUMNS WHILE DRILLING & EPOXY GROUTING v(E) BARS.

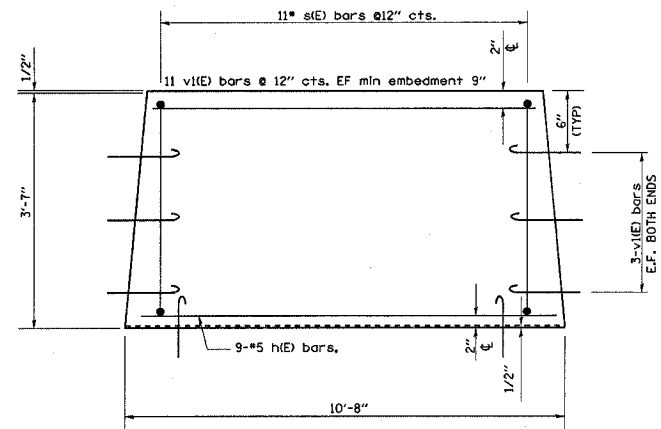


TOP PLAN



ELEVATION
LOOKING EAST

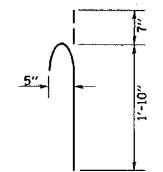
END ELEVATION



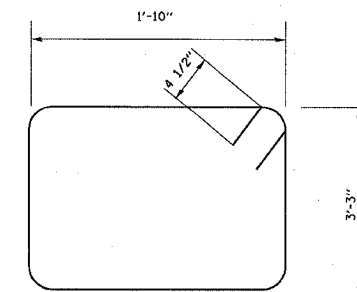
CRASH WALL DETAIL

BILL OF MATERIAL

| Bar | No. | Size | Length | Shape |
|----------------------------------|-----|----------|----------|-------|
| h(E) | 27 | #5 | 10'-4" | — |
| s(E) | 33 | #5 | 10'-11" | □ |
| v(E) | 102 | #5 | 2'-5" | ↑ |
| Item | | Unit | Quantity | |
| Concrete Structures | | Cu. Yds. | 9.2 | |
| Reinforcement Bars, Epoxy Coated | | Pound | 930 | |



V(E) BAR



S(E) BAR

DESIGN STRESSES (NEW)

f_c = 3,500 psi
 F_y = 60,000 PSI (REINFORCEMENT)

FAI RTE 57
 SEC D3 INTERSTATE SAFETY 2007-2
 FORD CO / STA 329+98.30
 SN 027-0010 MEDIAN

PIER CRASH WALL EXTENSION