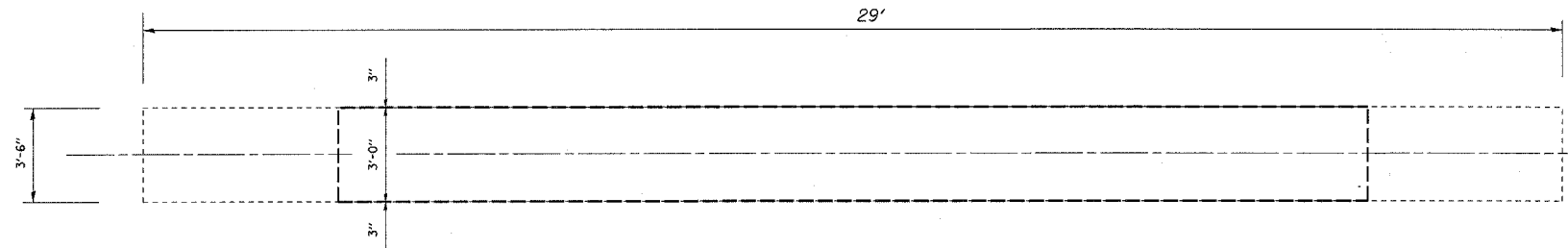


| F. A. I. DIST.      | SECTION | COUNTY   | TOTAL SHEETS     | SHEET NO. |
|---------------------|---------|----------|------------------|-----------|
| 74                  | *       | **       | 28               | 10        |
| STA.                |         | TO STA.  |                  |           |
| FED. ROAD DIST. NO. |         | ILLINOIS | FED. AID PROJECT |           |

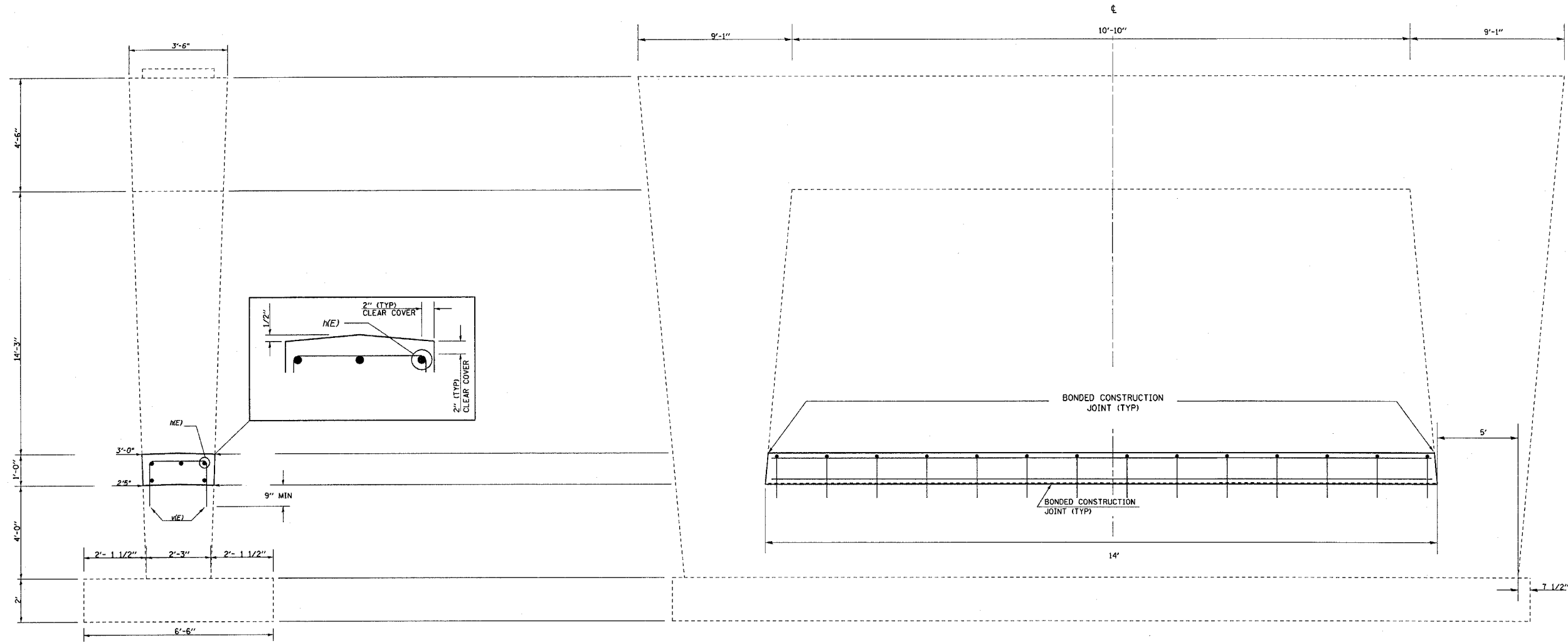
\* D3 INTERSTATE SAFETY 2007-2  
 \*\* FORD, IROQUOIS, KANKAKEE



- NOTE:**
- 1) DRILL & EPOXY GROUT v(E) BARS IN 9" (MIN) DRILLED HOLES ACCORDING TO SECTION 584 OF THE STANDARD SPECIFICATIONS.
  - 2) USE EXISTING PLANS INCLUDED TO AVOID DAMAGING LONGITUDINAL REINFORCEMENT IN THE EXISTING CRASHWALL WHILE DRILLING & EPOXY GROUTING v(E) BARS.



TOP PLAN

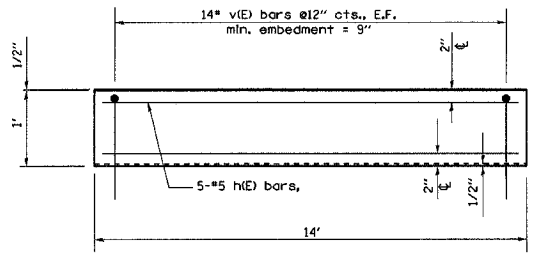


ELEVATION  
LOOKING EAST

END ELEVATION

DESIGN STRESSES (NEW)

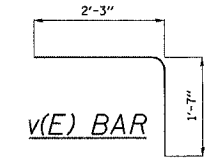
f<sub>c</sub> = 3,500 psi  
 F<sub>y</sub> = 60,000 PSI (REINFORCEMENT)



CRASH WALL DETAIL

BILL OF MATERIAL

| Bar                              | No.      | Size     | Length | Shape |
|----------------------------------|----------|----------|--------|-------|
| h(E)                             | 5        | #5       | 13'-8" | —     |
| v(E)                             | 28       | #5       | 3'-10" | └     |
| Item                             | Unit     | Quantity |        |       |
| Concrete Structures              | Cu. Yds. | 1.4      |        |       |
| Reinforcement Bars, Epoxy Coated | Pound    | 190      |        |       |



v(E) BAR

FAI RTE 57  
 SEC D3 INTERSTATE SAFETY 2007-2  
 IROQUOIS CO / STA 1282+22.19  
 SN 038-0133 MEDIAN

PIER CRASH WALL EXTENSION

4/3/2006 c:\projects\iew\ed02706\66638\der\al\ls.dgn