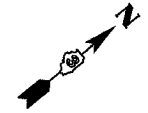
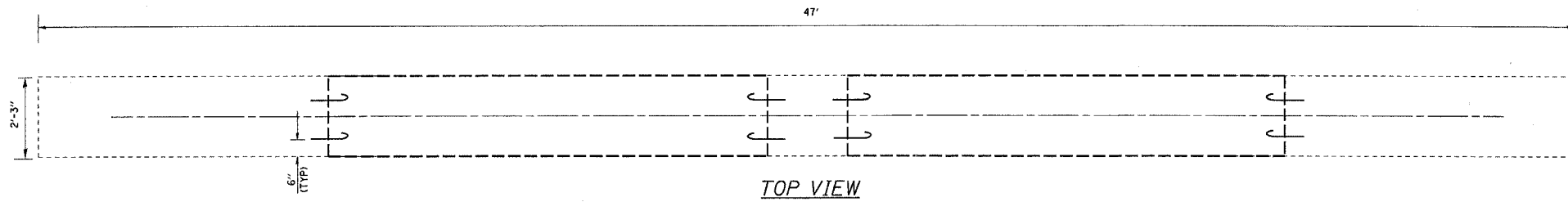


F.A.R. RITE	SECTION	COUNTY	TOTAL SHEETS	SHEET NO.
74	*	**	28	11
STA.		TO STA.		
FED. ROAD DIST. NO.	ILLINOIS	FED. AID PROJECT		

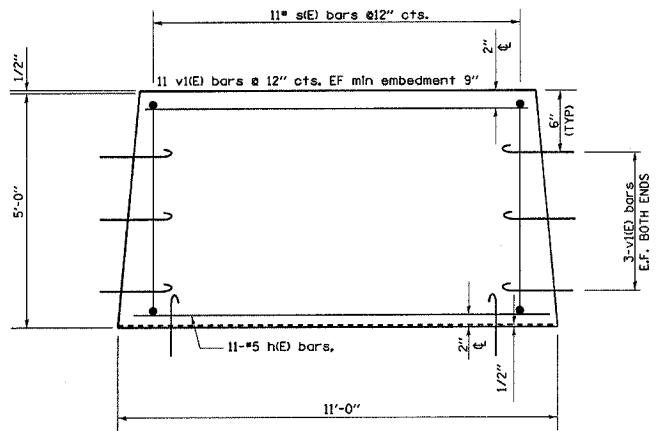
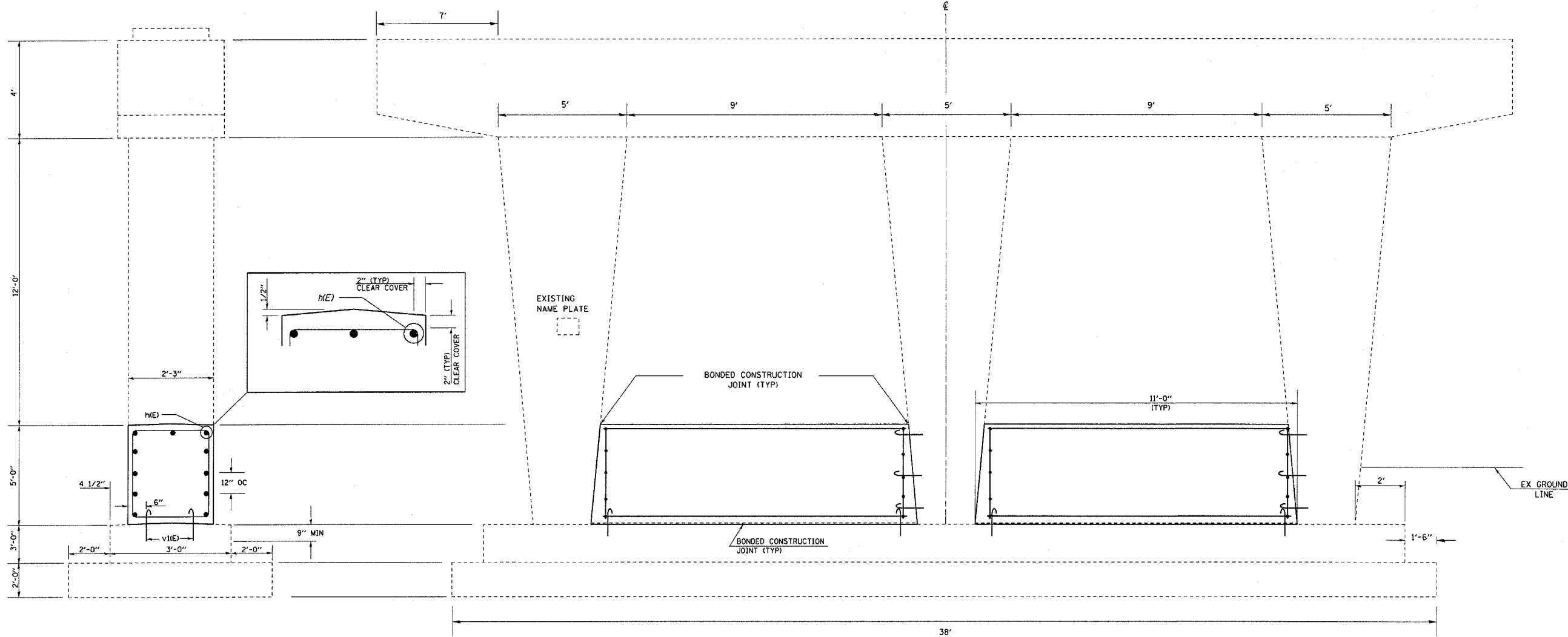
* D3 INTERSTATE SAFETY 2007-2
 ** FORD, IROQUOIS, KANKAKEE



- NOTE:**
- 1.) DRILL & EPOXY GROUT v(E) BARS IN 9" (MIN) DRILLED HOLES ACCORDING TO SECTION 584 OF THE STANDARD SPECIFICATIONS.
 - 2.) USE EXISTING PLANS INCLUDED TO AVOID DAMAGING LONGITUDINAL REINFORCEMENT IN THE EXISTING CRASHWALL OR VERTICAL REINFORCEMENT IN THE COLUMNS WHILE DRILLING & EPOXY GROUTING v(E) BARS.

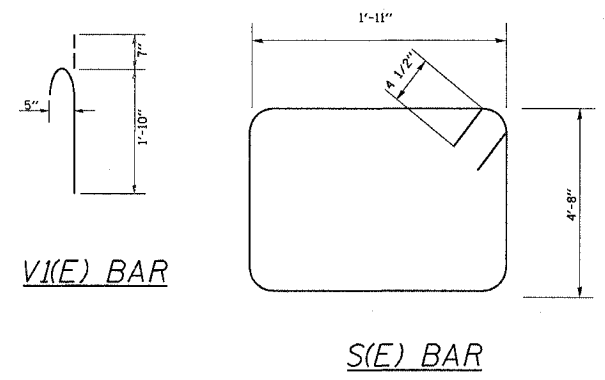


TOP VIEW



BILL OF MATERIAL

Bar	No.	Size	Length	Shape
h(E)	22	#5	10'-8"	—
s(E)	22	#5	13'-11"	□
v(E)	68	#5	2'-5"	↑
Item	Unit		Quantity	
Concrete Structures	Cu. Yds.		9.2	
Reinforcement Bars, Epoxy Coated	Pound		740	



DESIGN STRESSES (NEW)

f_c = 3,500 psi
 F_y = 60,000 PSI (REINFORCEMENT)

FAI RTE 57
 SEC D3 INTERSTATE SAFETY 2007-2
 IROQUOIS CO / STA 707+86.74
 SN 038-0129 NB

PIER CRASH WALL EXTENSION

4/3/2006 c:\projects\lew\ed02706\66638\detail.s.dgn