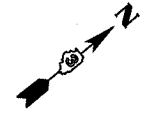


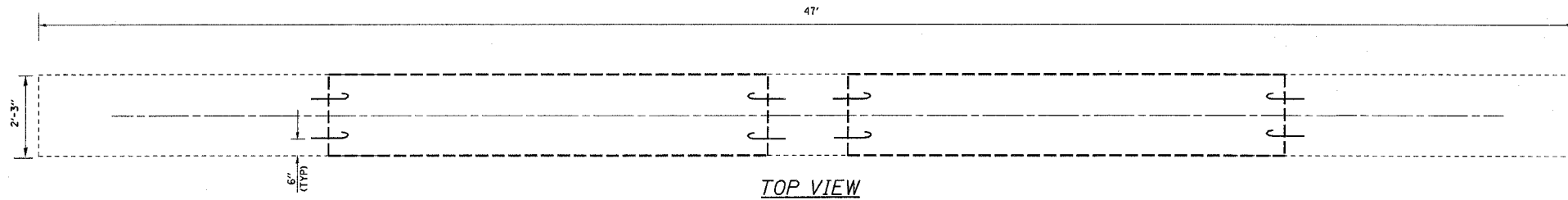
F.A.L. RTE.	SECTION	COUNTY	TOTAL SHEETS	SHEET NO.
74	*	**	28	12
STA.		TO STA.		
FED. ROAD DIST. NO.	ILLINOIS	FED. AID PROJECT		

D3 INTERSTATE SAFETY 2007-2
FORD, IROQUOIS, KANKAKEE

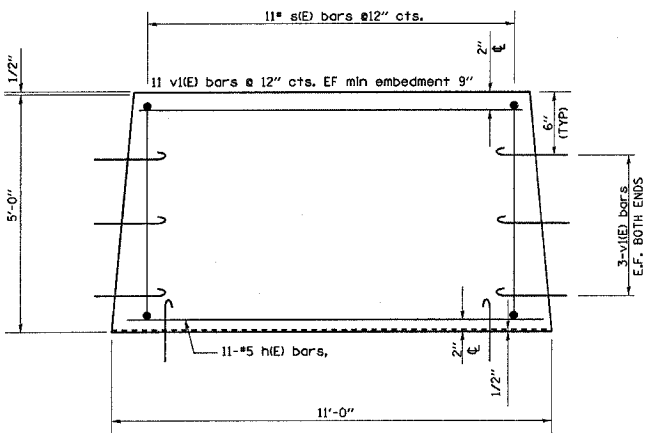
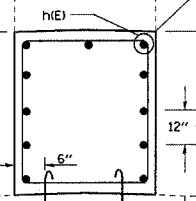
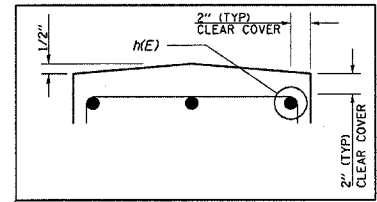
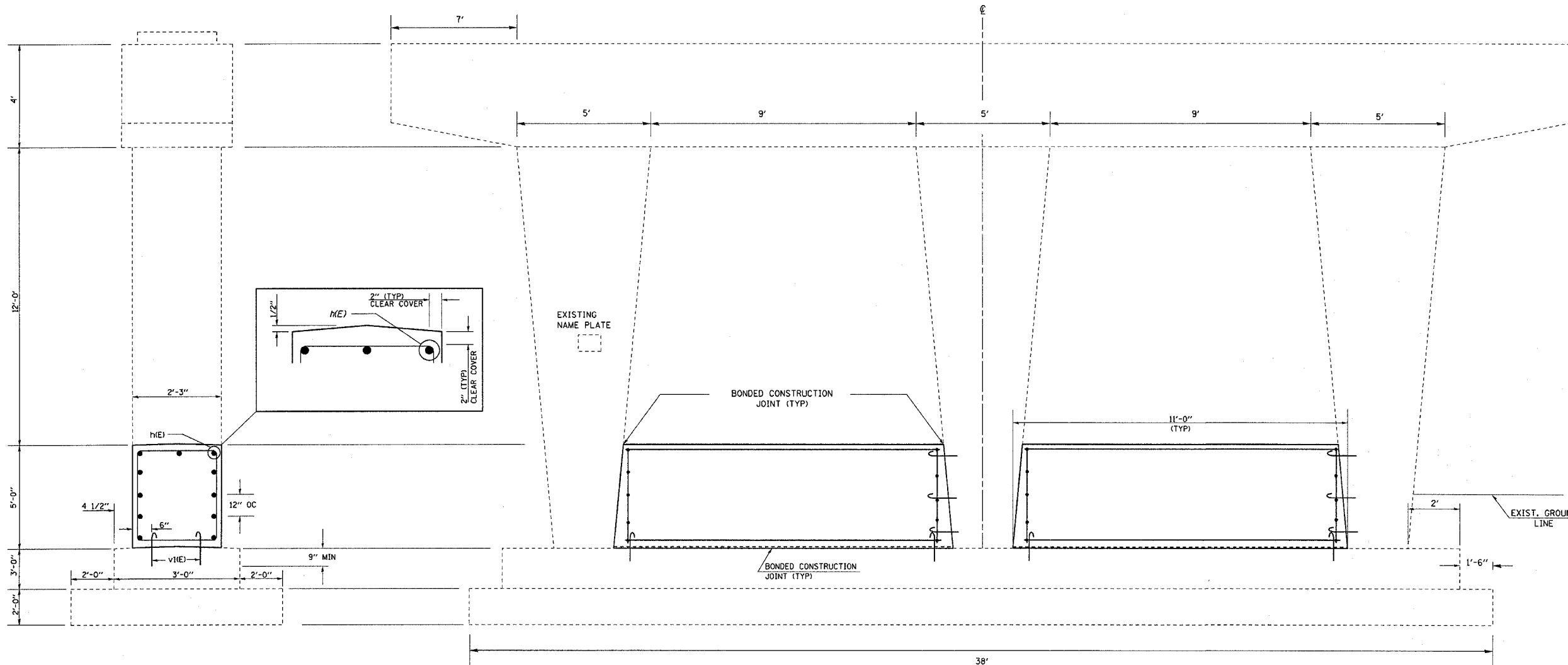


NOTE

- 1.) DRILL & EPOXY GROUT V(IE) BARS IN 9" (MIN) DRILLED HOLES ACCORDING TO SECTION 584 OF THE STANDARD SPECIFICATIONS.
- 2.) USE EXISTING PLANS INCLUDED TO AVOIDED DAMAGING LONGITUDINAL REINFORCEMENT IN THE EXISTING CRASHWALL OR VERTICAL REINFORCEMENT IN THE COLUMNS WHILE DRILLING & EPOXY GROUTING V(IE) BARS.

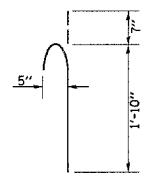


TOP VIEW

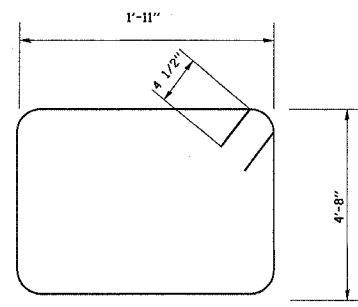


BILL OF MATERIAL

Bar	No.	Size	Length	Shape
v(IE)	22	#5	10'-8"	—
s(IE)	22	#5	13'-11"	□
v(IE)	68	#5	2'-5"	∩
Item		Unit	Quantity	
Concrete Structures		Cu. Yds.	9.2	
Reinforcement Bars, Epoxy Coated		Pound	740	



V(IE) BAR



S(IE) BAR

DESIGN STRESSES (NEW)

$f_c = 3,500$ psi
 $FY = 60,000$ PSI (REINFORCEMENT)

FAI RTE 57
SEC D3 INTERSTATE SAFETY 2007-2
IROQUOIS CO / STA 707+86.74
SN 038-0129 SB

PIER CRASH WALL EXTENSION