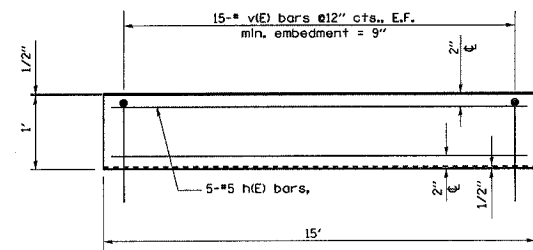
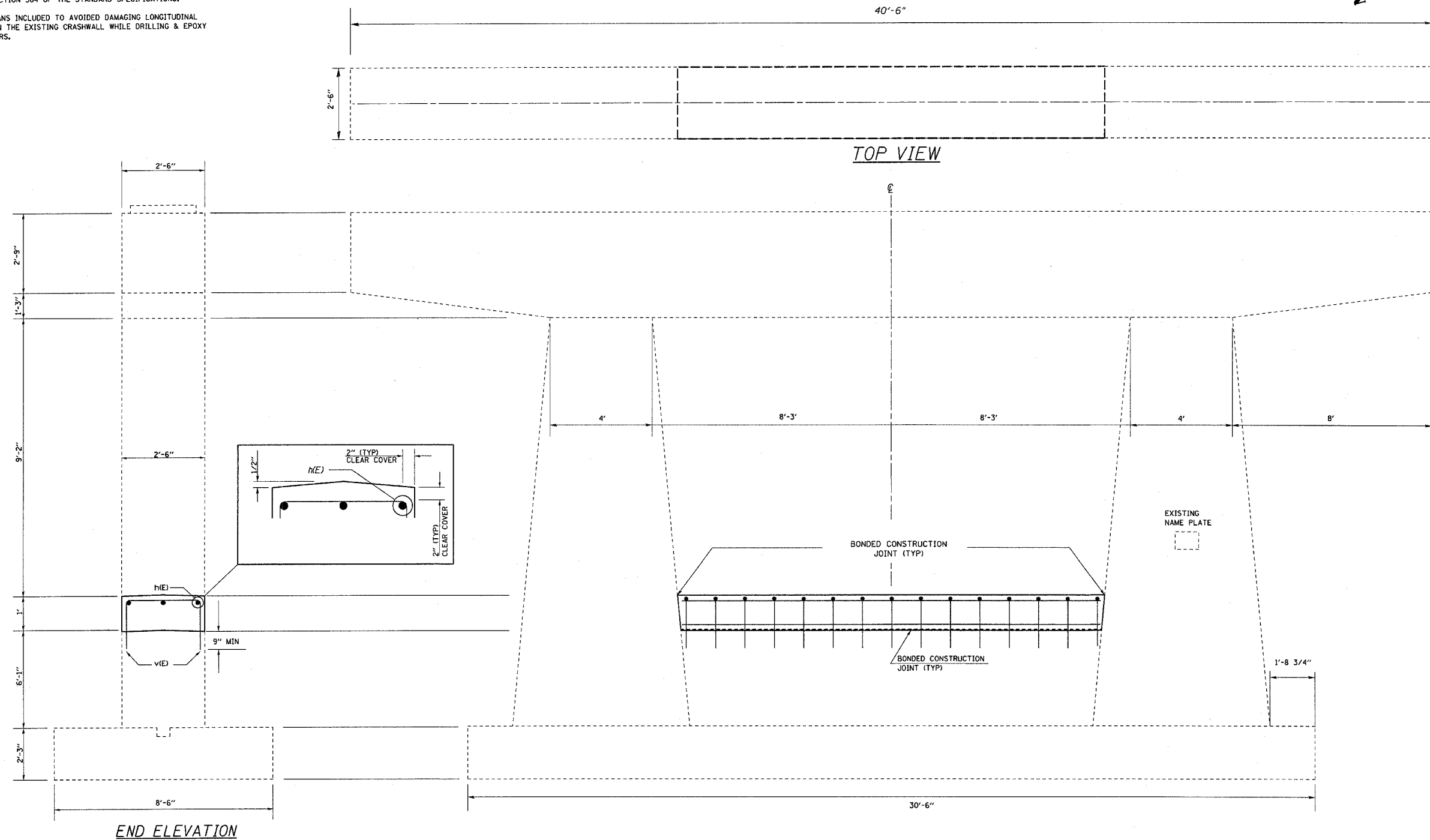


F. A. L. FILE	SECTION	COUNTY	TOTAL SHEETS	SHEET NO.
	*	**	28	13
STA.	TO STA.			
FED. ROAD DIST. NO.	ILLINOIS	FED. AID PROJECT		

D3 INTERSTATE SAFETY 2007-2  
FORD, IROQUOIS, KANKAKEE

**NOTE:**

- 1.) DRILL & EPOXY GROUT v(E) BARS IN 9" (MIN) DRILLED HOLES ACCORDING TO SECTION 584 OF THE STANDARD SPECIFICATIONS.
- 2.) USE EXISTING PLANS INCLUDED TO AVOIDED DAMAGING LONGITUDINAL REINFORCEMENT IN THE EXISTING CRASHWALL WHILE DRILLING & EPOXY GROUTING v(E) BARS.

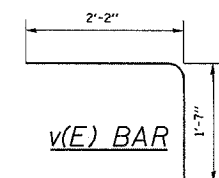


END ELEVATION

CRASH WALL DETAIL

**BILL OF MATERIAL**

Bar	No.	Size	Length	Shape
h(E)	5	#5	14'-8"	—
v(E)	30	#5	3'-9"	└
Item		Unit	Quantity	
Concrete Structures		Cu. Yds.	1.4	
Reinforcement Bars, Epoxy Coated		Pound	200	



**DESIGN STRESSES (NEW)**

f<sub>c</sub> = 3,500 psi  
F<sub>y</sub> = 60,000 PSI (REINFORCEMENT)

IL 116 OVER FAI RTE 57  
SEC D3 INTERSTATE SAFETY 2007-2  
IROQUOIS CO / STA 129+68.72  
SN 038-0123 NB

PIER CRASH WALL EXTENSION

4/3/2006 c:\proje\ecr\sl\ew\ed02706\66638\defa11s.dgn