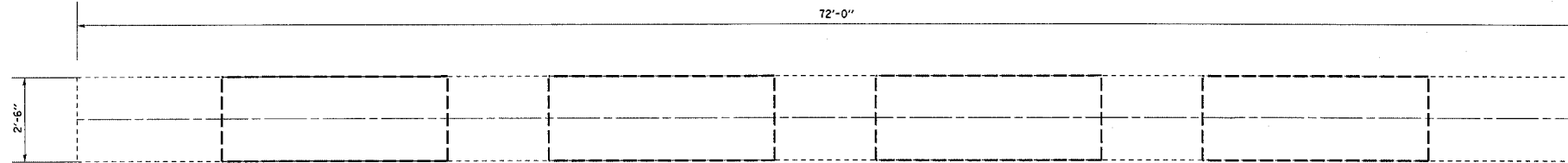


F. A. L. DIST.	SECTION	COUNTY	TOTAL SHEETS	SHEET NO.
74	*	**	28	14
STA.		TO STA.		
FED. ROAD DIST. NO.		BUILDING	FED. AID PROJECT	

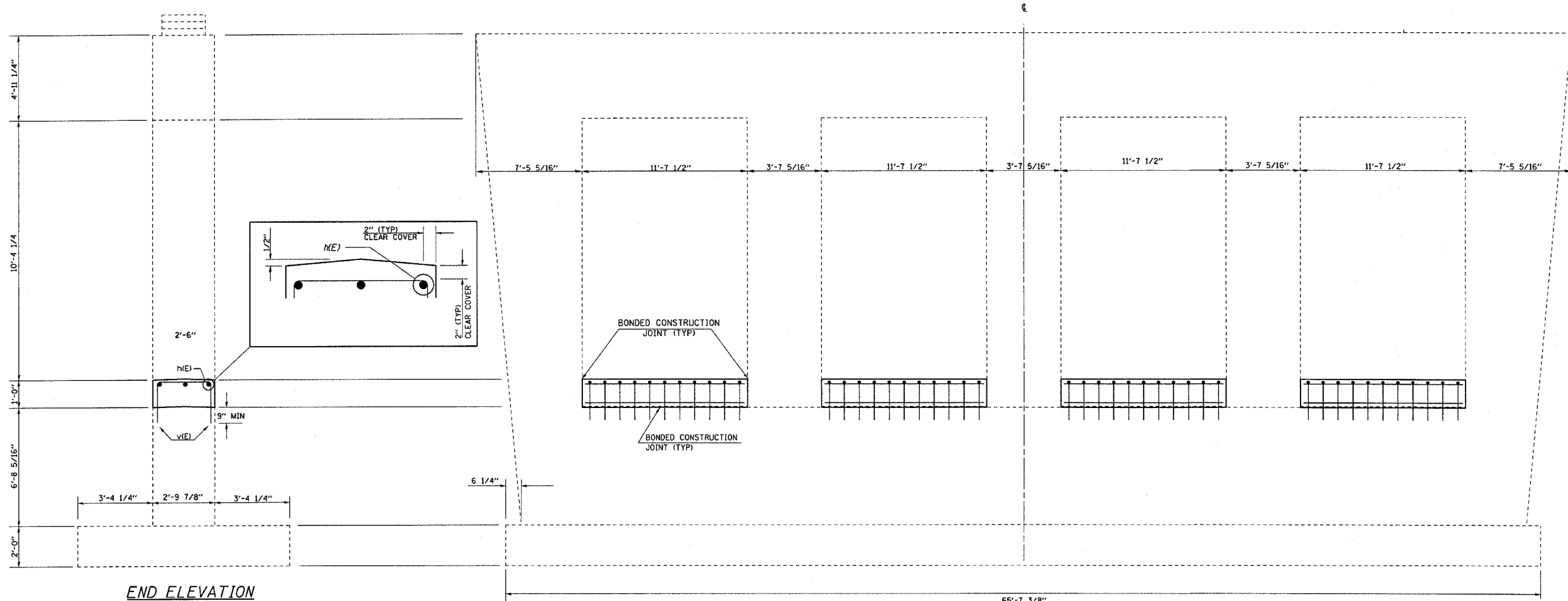
* D3 INTERSTATE SAFETY 2007-2
 ** FORD, IROQUOIS, KANKAKEE

NOTE:

- (CONVERTED FROM METRIC)
- 1.) DRILL & EPOXY GROUT v(E) BARS IN 9" (MIN) DRILLED HOLES ACCORDING TO SECTION 584 OF THE STANDARD SPECIFICATIONS.
- 2.) USE EXISTING PLANS INCLUDED TO AVOIDED DAMAGING LONGITUDINAL REINFORCEMENT IN THE EXISTING CRASHWALL WHILE DRILLING & EPOXY GROUTING v(E) BARS.



TOP VIEW

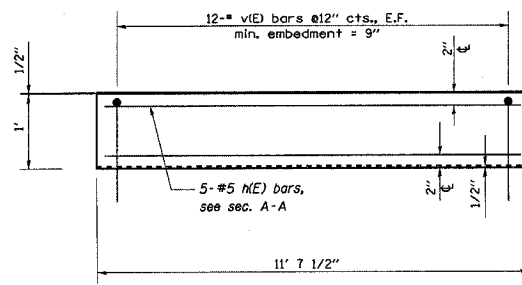


END ELEVATION

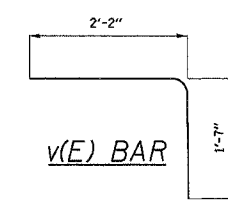
ELEVATION
LOOKING EAST

BILL OF MATERIAL

Bar	No.	Size	Length	Shape
n(E)	20	#5	11'-4"	—
v(E)	96	#5	3'-9"	└
Item	Unit	Quantity		
Concrete Structures	Cu. Yds.	4.3		
Reinforcement Bars, Epoxy Coated	Pound	620		



CRASH WALL DETAIL



DESIGN STRESSES (NEW)

f_c = 3,500 psi
 F_y = 60,000 PSI (REINFORCEMENT)

CH RTE 44 ARMOUR RD OVER FAI RTE 57
 SEC D3 INTERSTATE SAFETY 2007-2
 KANKAKEE CO STA 8+570.779
 SN 046-0126 MEDIAN

PIER CRASH WALL EXTENSION

4/3/2006 c:\projects\1\ew\ed02706\66638.dgn