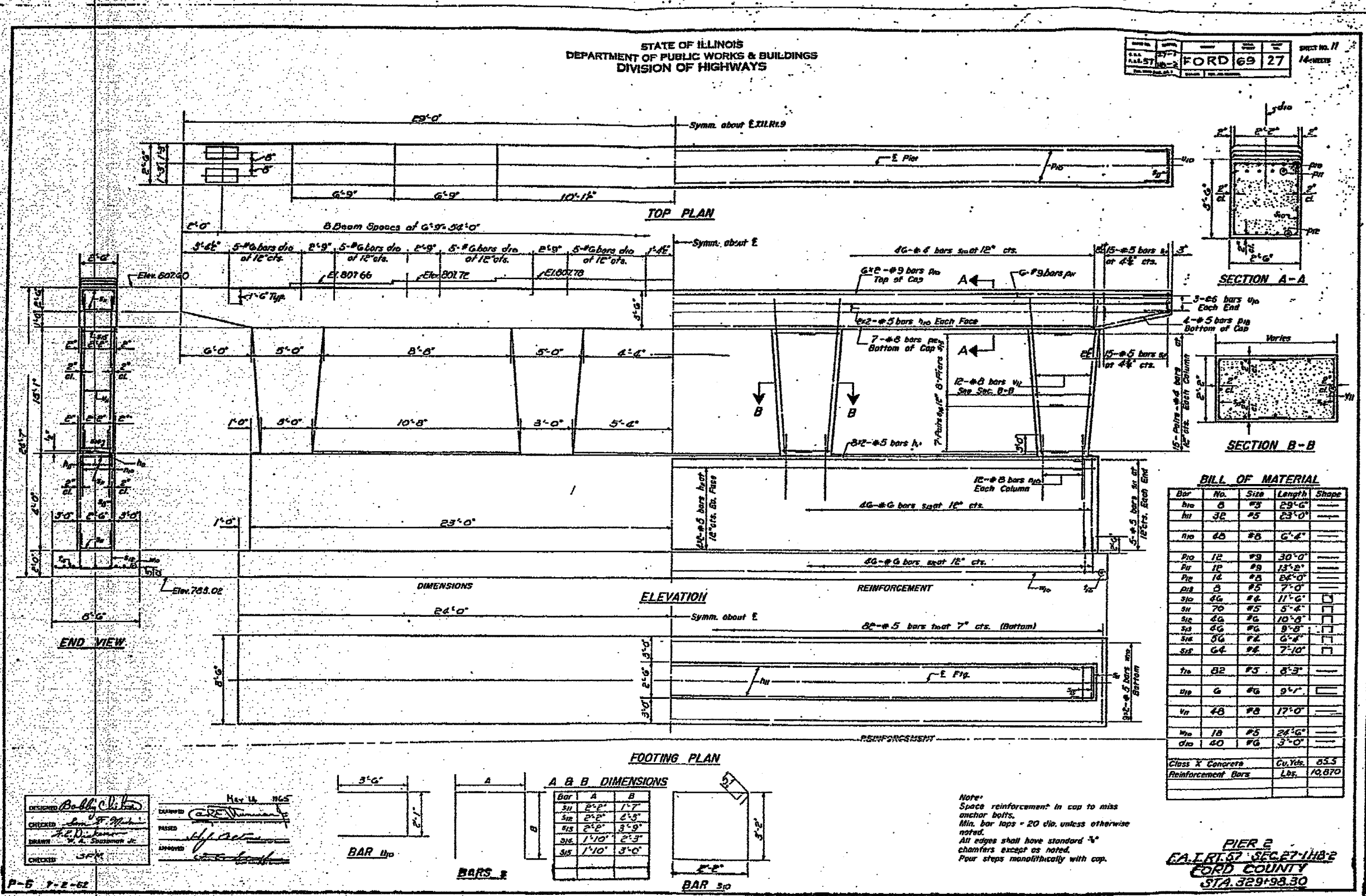


F. A. L. ETC.	SECTION	COUNTY	TOTAL SHEETS	SHEET NO.
T4	*	**	28	16
STA.		TO STA.		
FED. ROAD DIST. NO.		ILLINOIS		FED. AID PROJECT

D3 INTERSTATE SAFETY 2007-2
FORD, IROQUOIS, KANKAKEE

STATE OF ILLINOIS
DEPARTMENT OF PUBLIC WORKS & BUILDINGS
DIVISION OF HIGHWAYS

PROJECT NO. 11	FORD 69 27	14 SHEETS
----------------	------------	-----------



BILL OF MATERIAL

Bar	No.	Size	Length	Shape
h1	8	#3	29'-0"	—
h1	32	#5	23'-0"	—
h1	40	#6	6'-0"	—
h10	12	#3	30'-0"	—
h1	12	#3	13'-0"	—
h1	16	#3	24'-0"	—
h1	5	#5	7'-0"	—
h1	40	#4	11'-0"	□
h1	70	#5	5'-0"	□
h1	40	#6	10'-0"	□
h1	40	#6	9'-0"	□
h1	50	#6	6'-0"	□
h1	64	#6	7'-10"	□
h1	82	#5	8'-3"	—
h1	6	#6	9'-1"	—
h1	48	#8	17'-0"	—
h1	18	#5	24'-6"	—
h1	40	#6	3'-0"	—
Class X Concrete		Cu. Yds.	55.3	
Reinforcement Bars		Lbs.	10,870	

A & B DIMENSIONS

Bar	A	B
h1	2'-2"	1'-7"
h1	2'-2"	2'-3"
h1	2'-2"	3'-9"
h1	1'-10"	2'-3"
h1	1'-10"	3'-0"

Note:
Space reinforcement in cap to miss anchor bolts.
Min. bar laps = 20 dia. unless otherwise noted.
All edges shall have standard 45° chamfers except as noted.
Four steps monolithically with cap.

PIER 2
CAL RT 67 SEC 27 1/2
FORD COUNTY
STA. 329+98.30

DESIGNED: *Bobbi (V. Van)*
CHECKED: *Sam S. M...*
DRAWN: *W. A. Shoopman Jr.*
DATE: May 14, 1965
PASSED: *[Signature]*
APPROVED: *[Signature]*

4/3/2006 c:\pro\ecr\sv\tem.ed02706\66638\detal1.s.dgn