

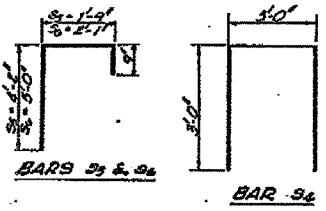
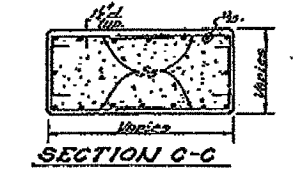
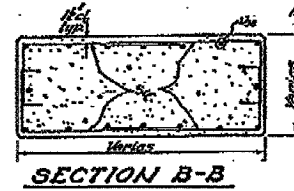
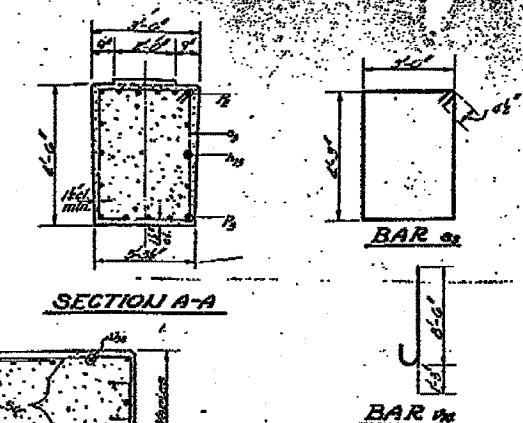
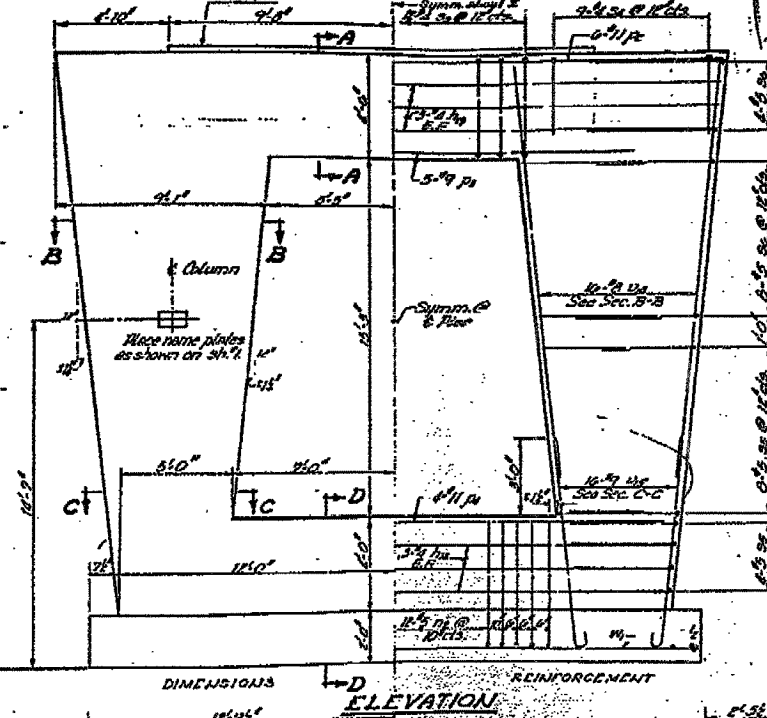
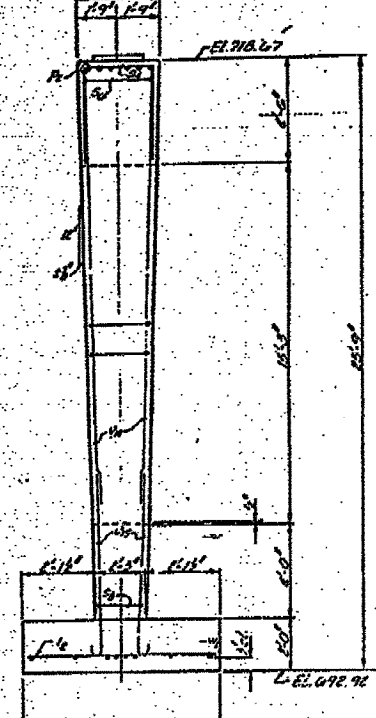
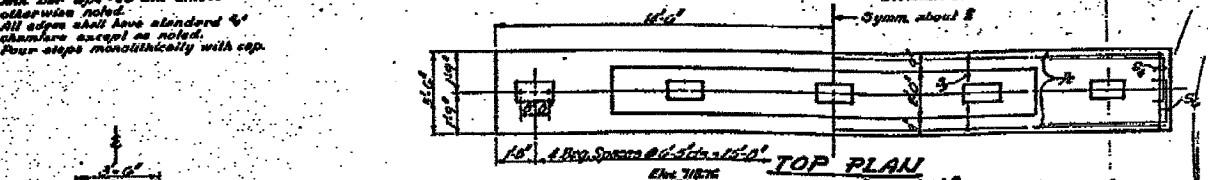
F. A. I. DIST.	SECTION	COUNTY	TOTAL SHEETS	SHEET NO.
74	*	**	28	18
STA.		TO STA.		
FED. ROAD DIST. NO.		ILLINOIS		FED. AID PROJECT

D3 INTERSTATE SAFETY 2007-2
FORD, IROQUOIS, KANKAKEE

NOTE:
Space reinforcement in cap to give anchor bolts.
Max. bar size = 20 dia unless otherwise noted.
All edges shall have standard 4" chamfers except as noted.
Four steps monolithically with cap.

STATE OF ILLINOIS
DEPARTMENT OF PUBLIC WORKS & BUILDINGS
DIVISION OF HIGHWAYS

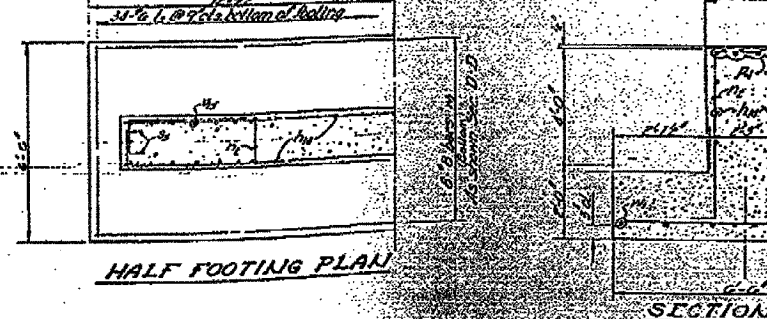
31'	27	15	9
187	3		



BILL OF MATERIAL

Bar	No.	Size	Length	Shape
11a	6	#4	28'-0"	
11b	6	#4	28'-0"	
12	20	#5	18'-0"	
13	6	#4	28'-0"	
14	5	#4	28'-0"	
15	4	#4	28'-0"	
16	12	#4	18'-0"	
17	12	#4	18'-0"	
18	12	#4	18'-0"	
19	20	#5	18'-0"	
20	20	#5	18'-0"	
21	24	#6	12'-0"	
22	22	#8	18'-0"	
23	22	#9	28'-0"	
24	8	#8	28'-0"	

DESIGNED: *Morris Blumstein*
CHECKED: *M.E.B.*
DRAWN: *Thomas B. Fetter*
EXAMINED: *[Signature]*
PARSED: *[Signature]*
APPROVED: *[Signature]*



SN 038-0133
MEDIAN
PIER
F.A.I. RT. 57 SEC. 38-71B-3
IROQUOIS COUNTY
STATION 1282 + 22.19

4/3/2006 c:\pro\jects\1\aw.ed02706\66638.dwg