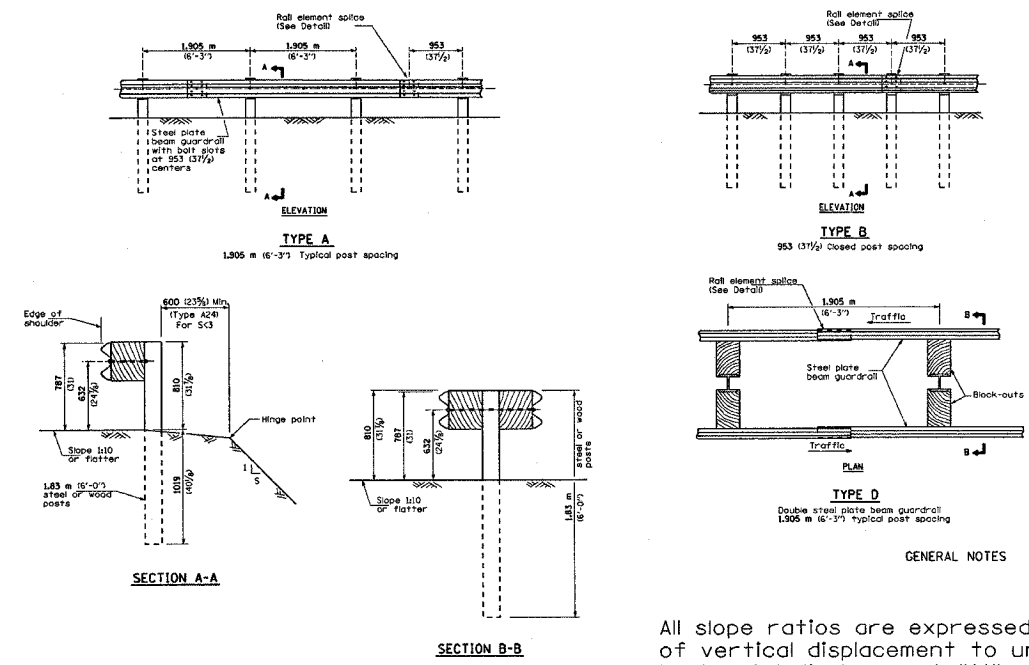


F. A. L. RT.	SECTION	COUNTY	TOTAL SHEETS	SHEET NO.
74	*	**	28	26
STA. TO STA.				
FED. ROAD DIST. NO.			ILLINOIS FED. AID PROJECT	

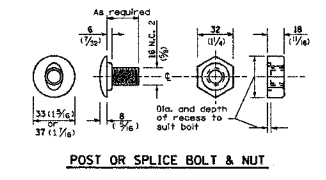
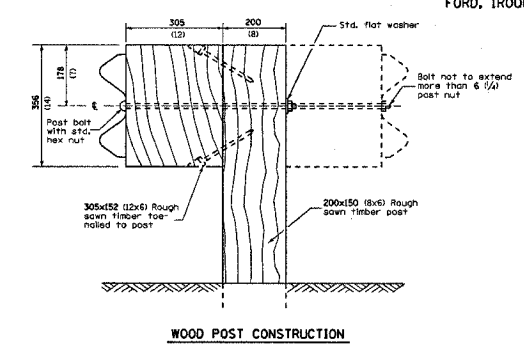
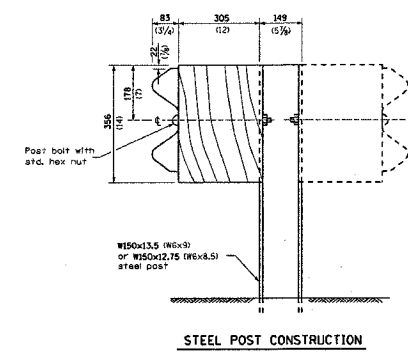
D3 INTERSTATE SAFETY 2007-2
FORD, IROQUOIS, KANKAKEE



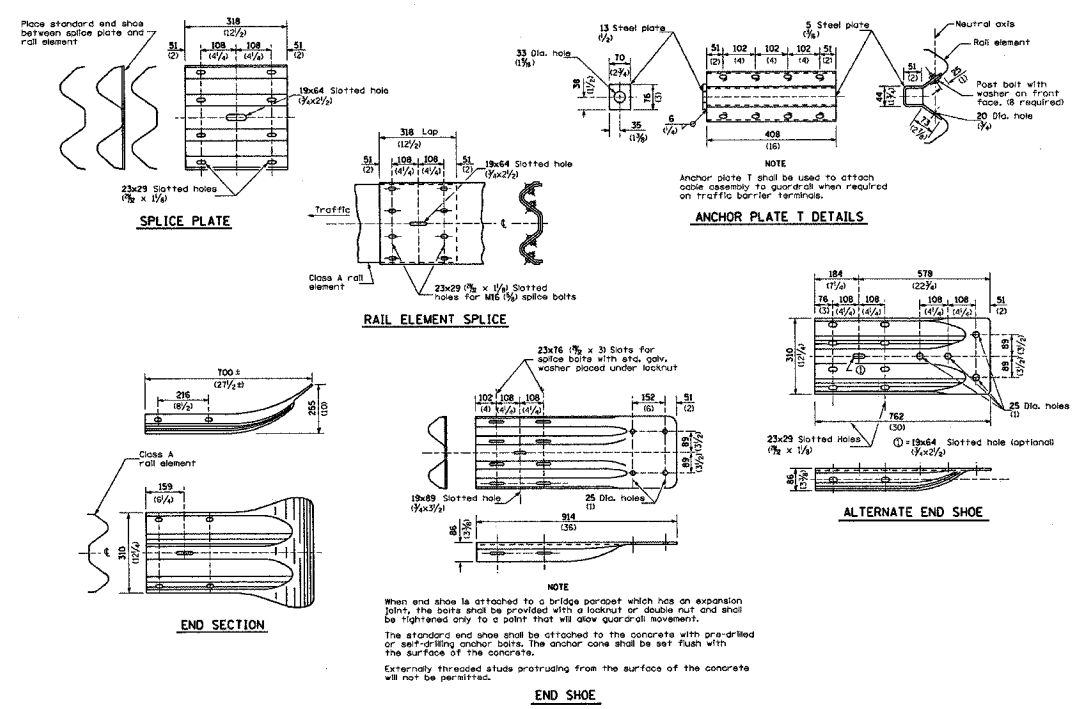
GENERAL NOTES

All slope ratios are expressed as units of vertical displacement to units of horizontal displacement (V:H).
All dimensions are in millimeters (inches) unless otherwise shown.

(Sheet 1 of 4)

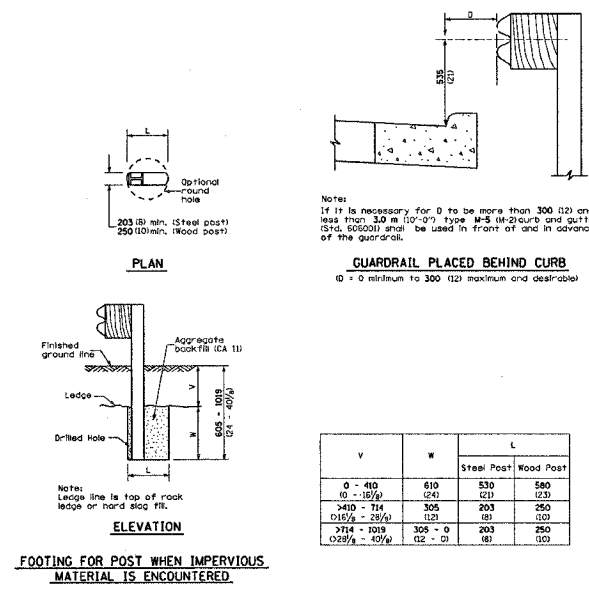


(Sheet 2 of 4)

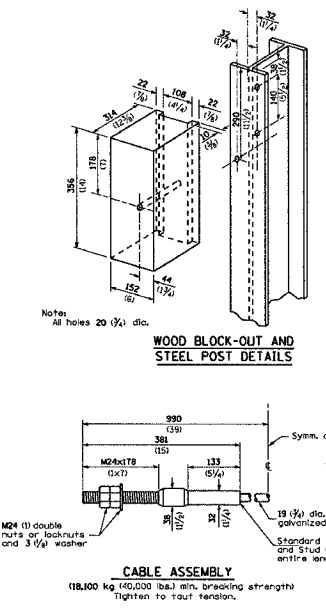


NOTE
When end shoe is attached to a bridge parapet which has an expansion joint, the bolts shall be provided with a locknut or double nut and shall be tightened only to a point that will allow guardrail movement.
The standard end shoe shall be attached to the concrete with pre-drilled or self-drilling anchor bolts. The anchor cone shall be set flush with the surface of the concrete.
Externally threaded studs protruding from the surface of the concrete will not be permitted.

(Sheet 3 of 4)



V	W	L	Steel Post	Wood Post
0 - 410	610	530	530	530
410 - 1015	1210	1210	1210	1210
> 1015 - 1714	305	203	250	250
1714 - 1019	305 - 0	203	250	250
1019 - 4274	102 - 0	102	102	102



CABLE ASSEMBLY
118,100 kg (40,000 lbs) min. breaking strength
Tighten to four tenths.

STEEL PLATE BEAM GUARDRAIL DETAIL

(Sheet 4 of 4)