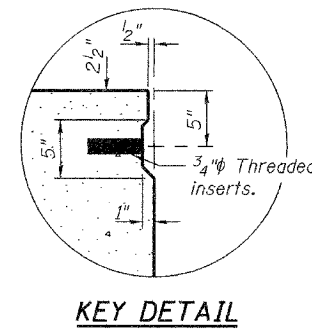
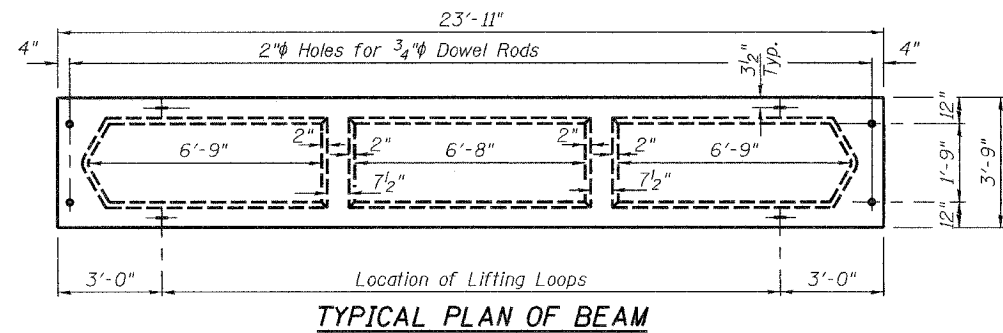


STATE OF ILLINOIS
DEPARTMENT OF TRANSPORTATION

Note:
Tack welding of stirrups to bottom longitudinal reinforcement bars will not be permitted except as otherwise authorized in writing by the Engineer.

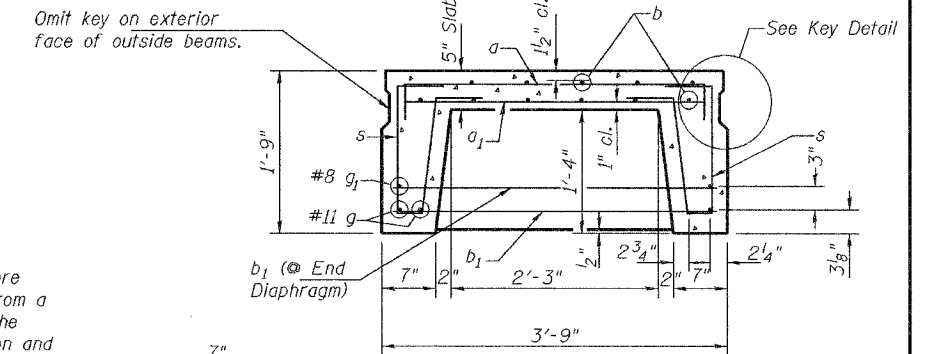
ROUTE NO.	SECTION	COUNTY	TOTAL SHEETS	SHEET NO.	SHEET NO. 3 11 SHEETS
		Peoria		11	
FED. ROAD DIST. NO. 7	ILLINOIS	FED. AID PROJECT-	Contract Number: 68072		



KEY DETAIL

**Joint shall be filled with non-shrink grout. Dimension may vary to accommodate tolerance in beam lengths.

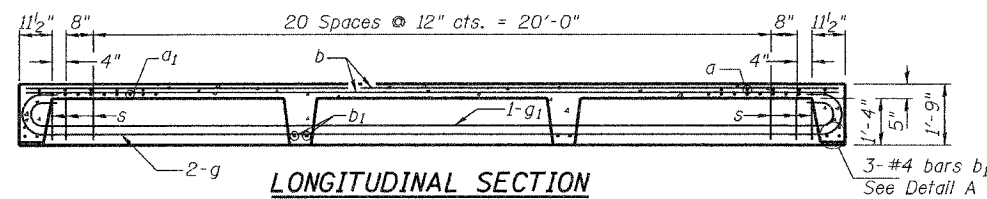
DETAIL A
The surface of the member shall not deviate more than 1/1200 of the full length of the member from a straight line connecting the two end points on the member's surface. In addition to State inspection and prior to erection, the beam shall be tested and approved by the resident Engineer at the jobsite.
The units shall remain on the bottom supporting forms until the concrete has attained a compressive strength of not less than 3,500 pounds per square inch.



TYPICAL SECTION THRU BEAM

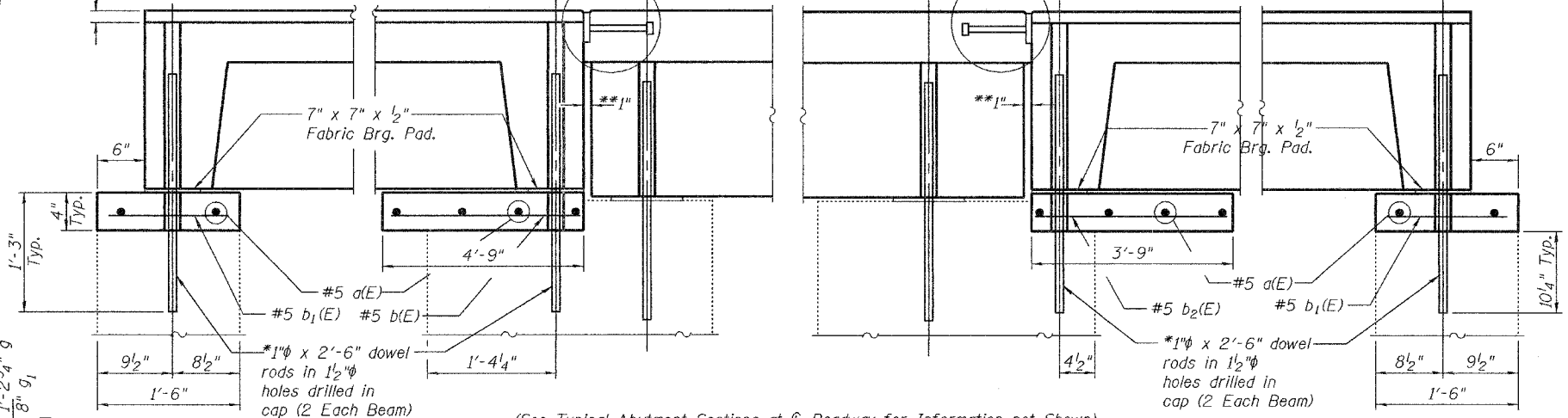
*Existing Dowel Rods shall be cut off and ground flush with the top of the existing concrete. Cost to be included in the cost of Removal of Existing Precast Concrete Unit. New Dowel Rods shall be grouted after beams are in place and allowed to cure a minimum of 24 hours prior to grouting the shear keys.

BEARING PADS
(16 Required)



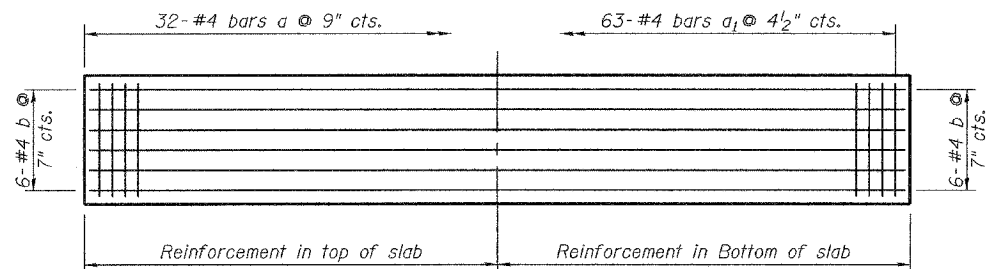
LONGITUDINAL SECTION

2 1/2" Min. Bituminous Concrete Overlay at edge of deck over beam. ±8 1/2" at Roadway.

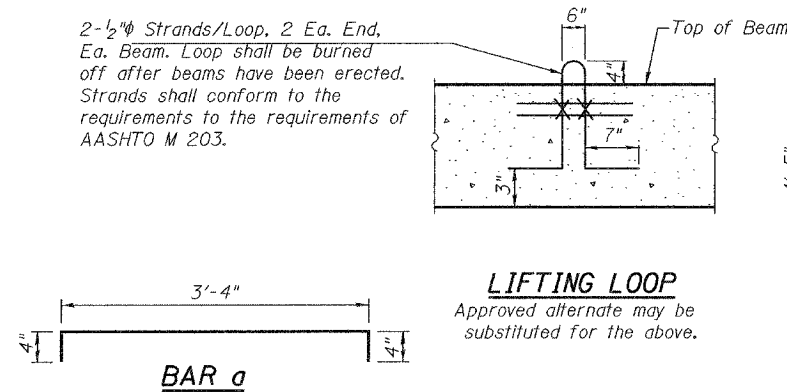


TYPICAL SECTION AT OUTSIDE FACE OF WEST ABUTMENT

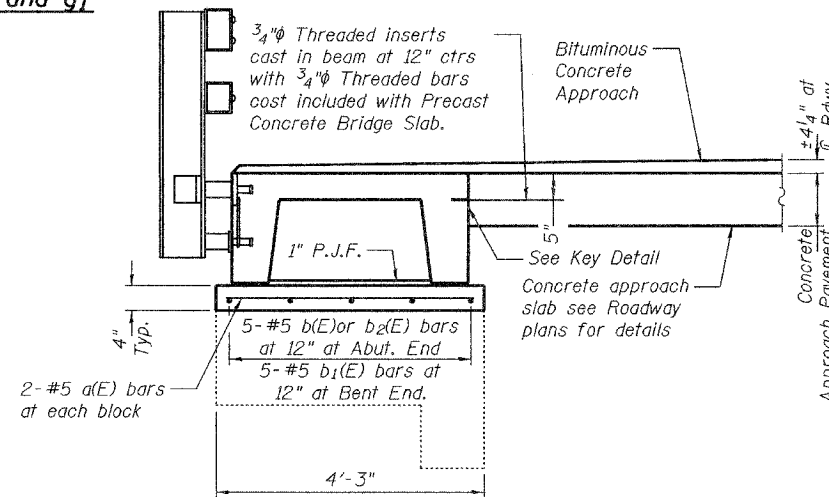
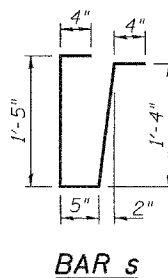
TYPICAL SECTION AT OUTSIDE FACE OF EAST ABUTMENT



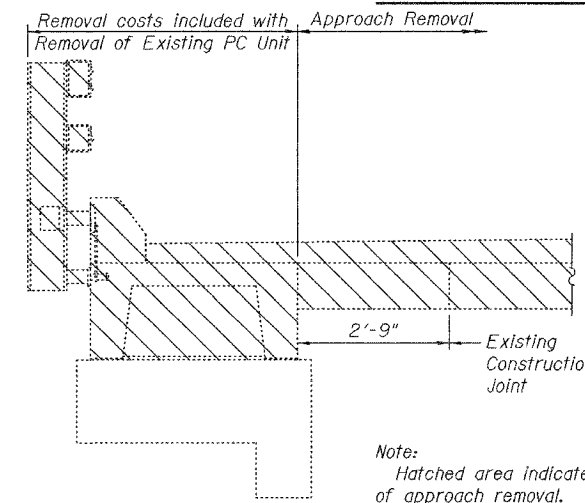
PLAN
Showing Slab Reinforcement



BARS g and g1



TYPICAL APPROACH SECTION



TYPICAL APPROACH REMOVAL SECTION

BILL OF MATERIAL

Bar	No.	Size	Length	Shape
a(E)	24	#5	4'-0"	—
b(E)	10	#5	4'-6"	—
b1(E)	20	#5	1'-4"	—
b2(E)	10	#5	3'-6"	—
Removal of Existing Precast Concrete Unit		Sq. Ft.	359	
Concrete Structures		Cu. Yd.	0.6	
Precast Concrete Bridge Slab		Sq. Ft.	359	
Reinforcement Bars, Epoxy Coated		Pound	210	

APPROACH DETAILS
US 50 / KICKAPOO CREEK
PEORIA COUNTY
SN 072-0033

DESIGNED	A.T.H.
CHECKED	S.J.B.
DRAWN	Drew Christopher
CHECKED	A.T.H. S.J.B.

April 26, 2006
EXAMINED John A. Morris
ENGINEER OF STRUCTURAL SERVICES
PASSED Ralph E. Anderson
ENGINEER OF BRIDGES AND STRUCTURES

Note:
Hatched area indicates area of approach removal.