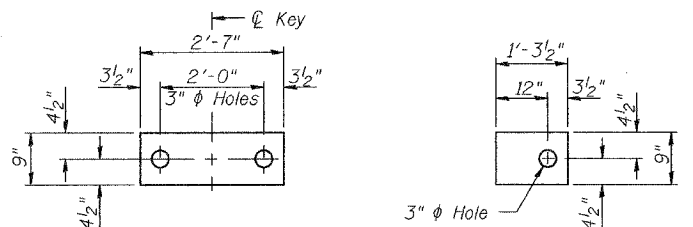


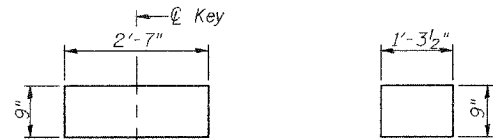
STATE OF ILLINOIS
DEPARTMENT OF TRANSPORTATION

ROUTE NO.	SECTION	COUNTY	TOTAL SHEETS	SHEET	SHEET NO. 4
		Peoria		15	11 SHEETS
Contract Number: 68072					



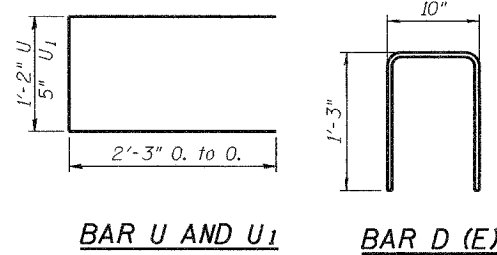
FABRIC BEARING PAD (Interior) **FABRIC BEARING PAD** (Exterior)

FIXED



FABRIC BEARING PAD (Interior) **FABRIC BEARING PAD** (Exterior)

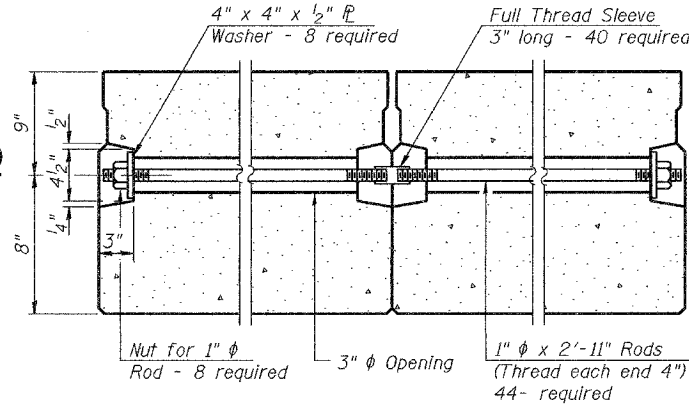
EXPANSION



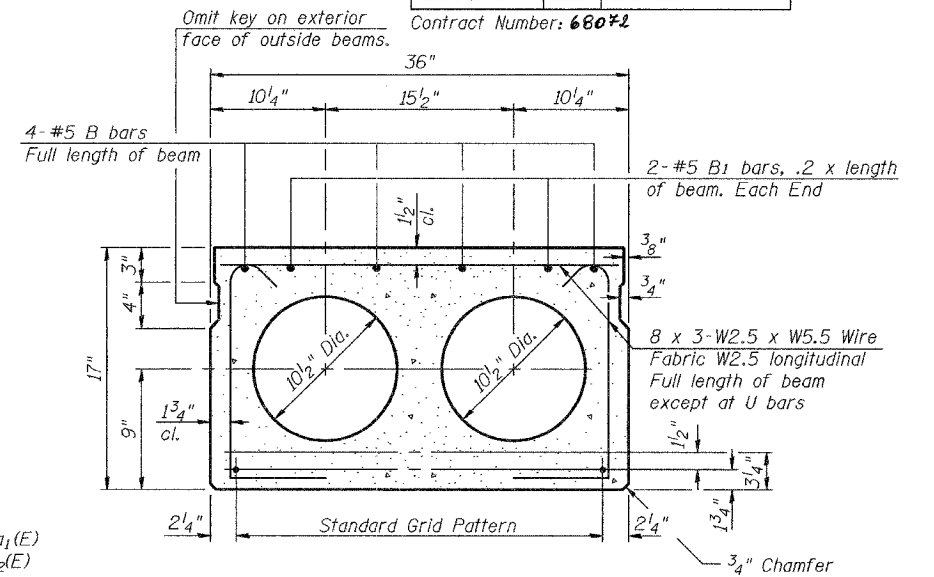
BEAM DIMENSIONS

Span	Dimensions			
	A	B	C	D
1	1'-6"	20'-9 1/2"	1'-6"	45'-5"
2	1'-6"	20'-4 1/2"	2'-4"	45'-5"
3	1'-6"	20'-7"	2'-4"	45'-10"
4	1'-6"	21'-0"	1'-6"	45'-10"

*See typical sections at Abutments and Piers on Sheet 5 of 11.



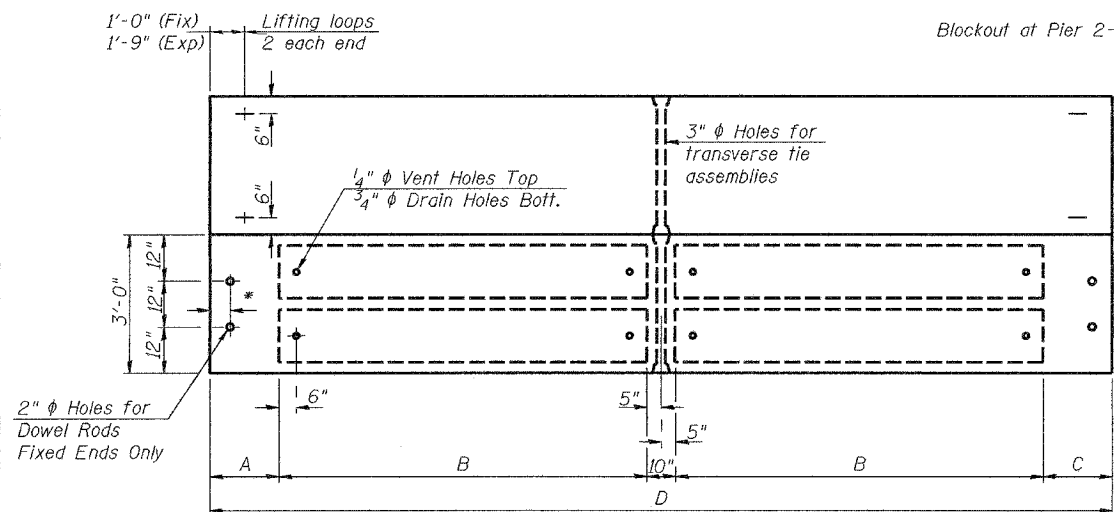
TYPICAL TRANSVERSE TIE ASSEMBLY



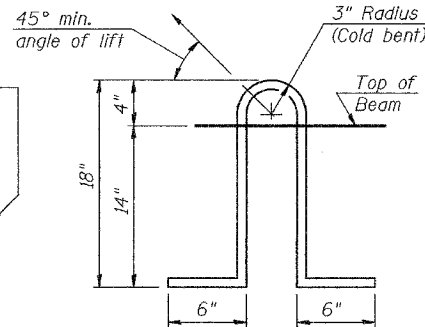
TYPICAL SECTION

1/2" ϕ Strands, Each Strand Stressed to 30,900 Lbs.
9-Strands 1 3/4" up, 6-Strands 3/4" up, 2-Strands 12" up

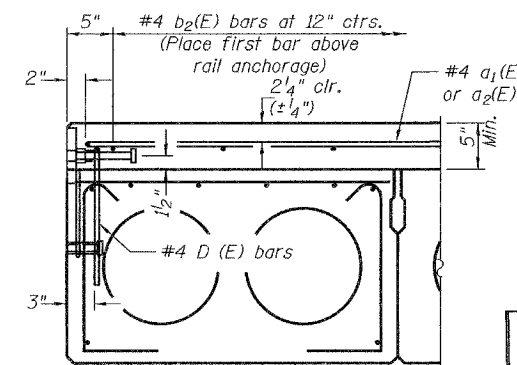
Note:
Place strands symmetrically about ϕ of beam.



PLAN

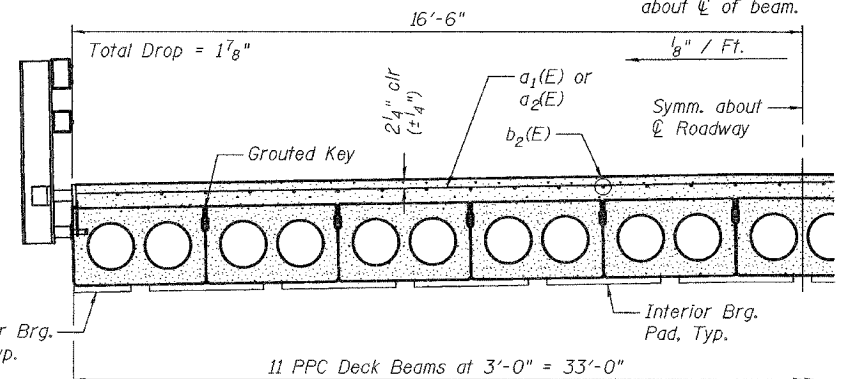


LIFTING LOOP DETAIL



FASCIA BEAM

Rail anchorage shall be cast in precast beams. See typical section for dimensions, strand pattern, and bar callouts not shown. Formwork necessary for the wearing surface may be secured utilizing the bottom rail inserts and/or additional inserts cast into the beam. Drilling into the beam will not be permitted.



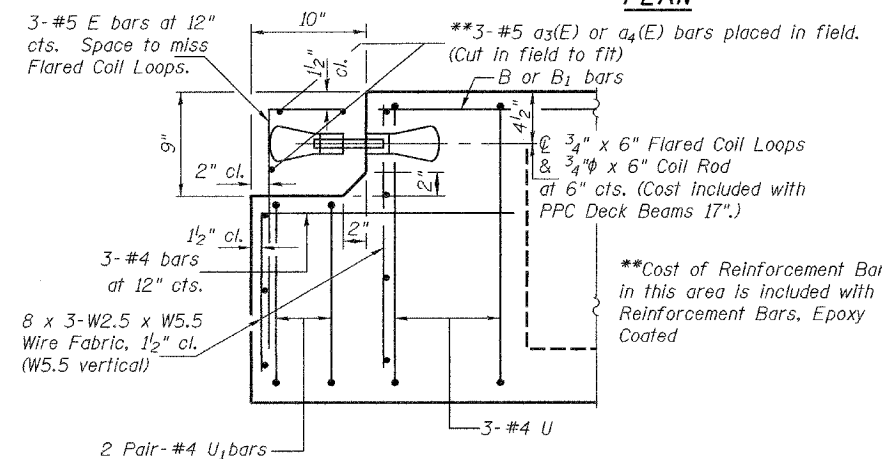
TYPICAL PARTIAL CROSS SECTION

BILL OF MATERIAL

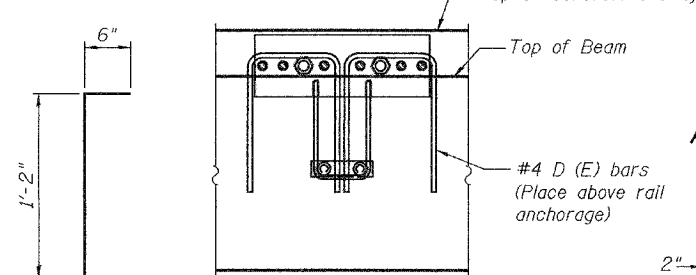
PPC Deck Beams (17" Depth)	Sq. Ft. 6,023
----------------------------	---------------

NOTES

Prestressing steel shall be uncoated high strength, low relaxation 7-wire strand, Grade 270. The nominal diameter shall be 1/2" and the nominal cross-sectional area shall be 0.153 sq. in. Lifting loops shall be 2 - 1/2" ϕ -270 ksi strands, as shown. The 1" ϕ rods in the transverse tie assembly shall be tightened to a snug fit and the threads set. Pockets that receive transverse tie bar on outside shall be filled with grout after transverse tie assembly is in place. The bearing seat surfaces shall be adjusted by shimming to assure firm and even bearing. Two 1/8" fabric adjusting shims of the dimensions of the Exterior Bearing Pad shall be provided for each bearing. Keyway surfaces shall be cleaned to remove form oil or other bond breaking material prior to shipment of the beams. Cleaning shall be done by sandblasting the keyway areas between top of the beam and the bottom edge of the key. Corrosion Inhibitor, as covered in the Special Provisions, shall be used in the concrete for precast prestressed concrete deck beams. Required Release Strength, f'ci, shall be 5,000 p.s.i. See sheet 7 of 11 for Rail Anchor Locations.

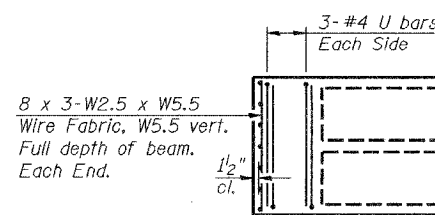


END OF BEAM (EXP. END)

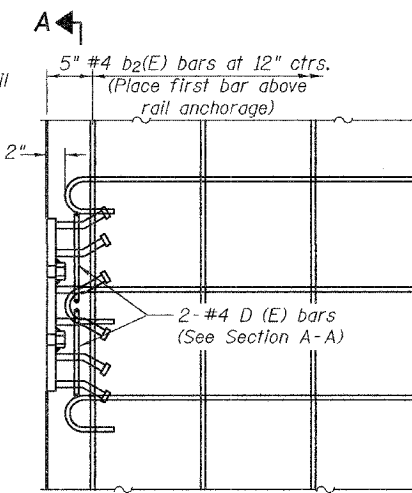


SECTION A-A

BAR E



END PLAN



PARTIAL DECK PLAN AT RAIL ANCHORAGE

DESIGNED	A.T.H.
CHECKED	S.J.B.
DRAWN	Drew Christopher
CHECKED	A.T.H. S.J.B.

EXAMINED	John A. Morris ENGINEER OF STRUCTURAL SERVICES
PASSED	Ralph E. Anderson ENGINEER OF BRIDGES AND STRUCTURES

PD-3-S 10-22-04

DECK BEAM DETAILS
US 50 / KICKAPOO CREEK
PEORIA COUNTY
SN 072-0033