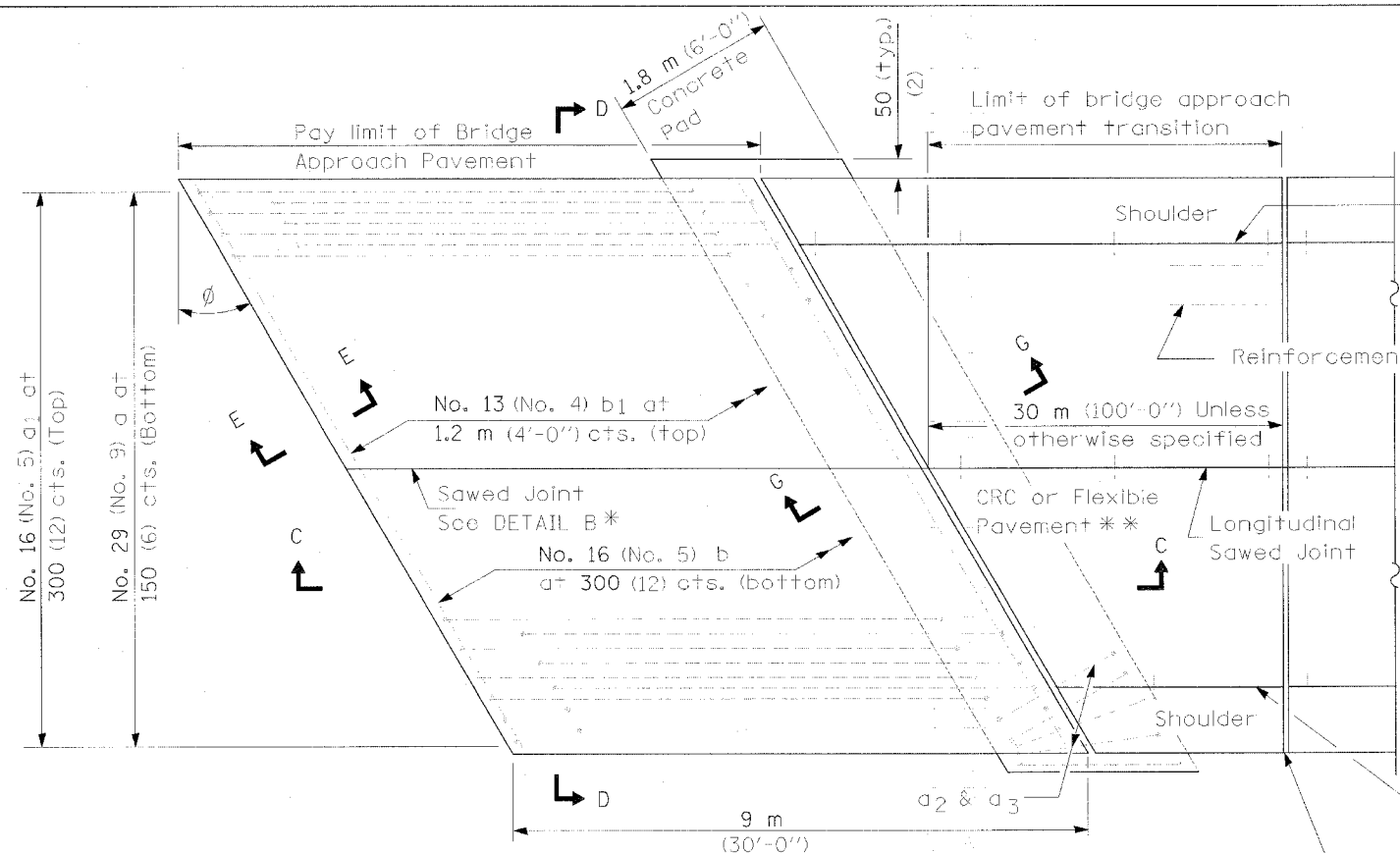
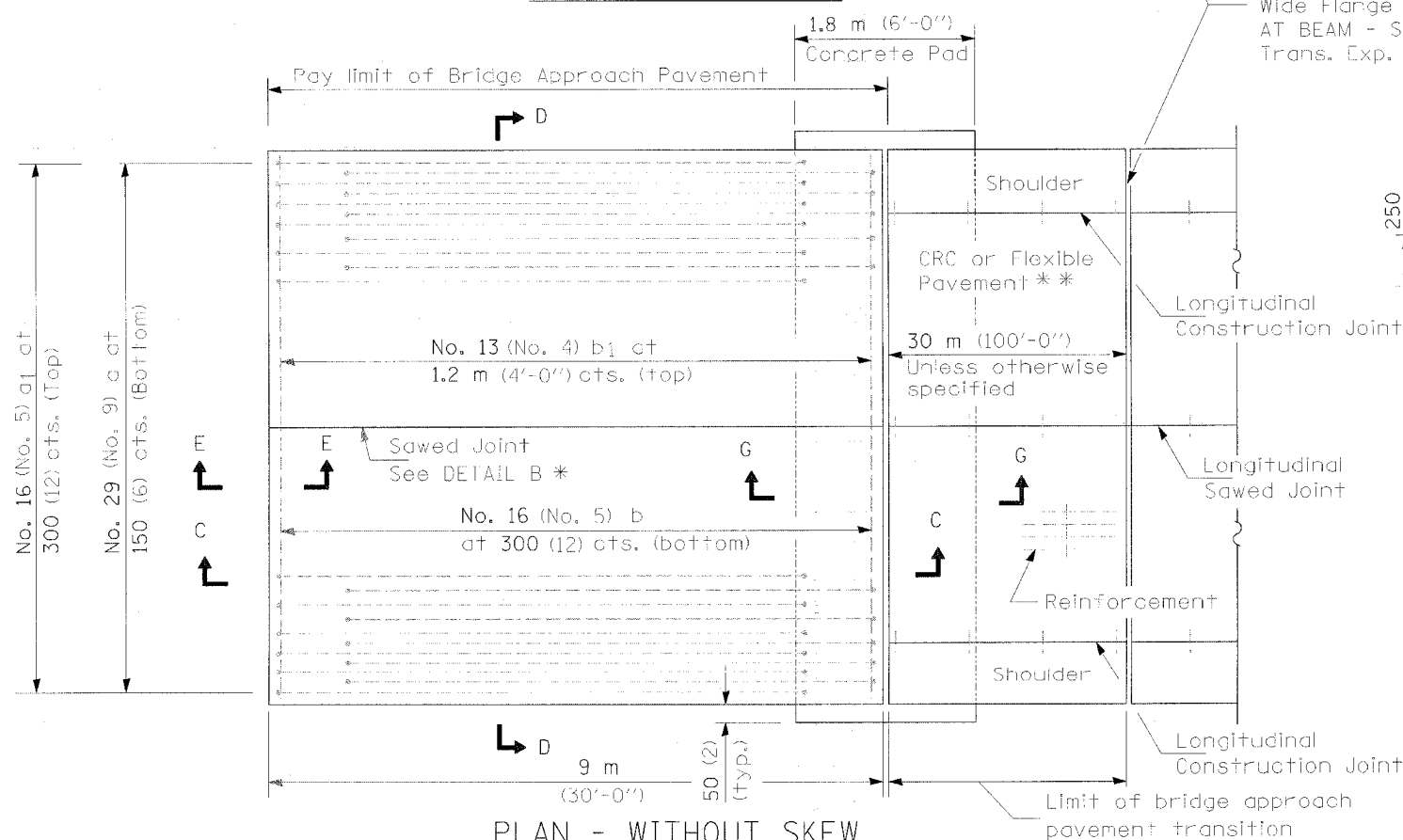


F.A.S. RTE.	SECTION	COUNTY	TOTAL SHEETS	SHEET NO.
2402	(113B-2)	PEORIA	55	23
STA.		TO STA.		
FED. ROAD DIST. NO.		ILLINOIS FED. AID PROJECT		

NEW CONSTRUCTION



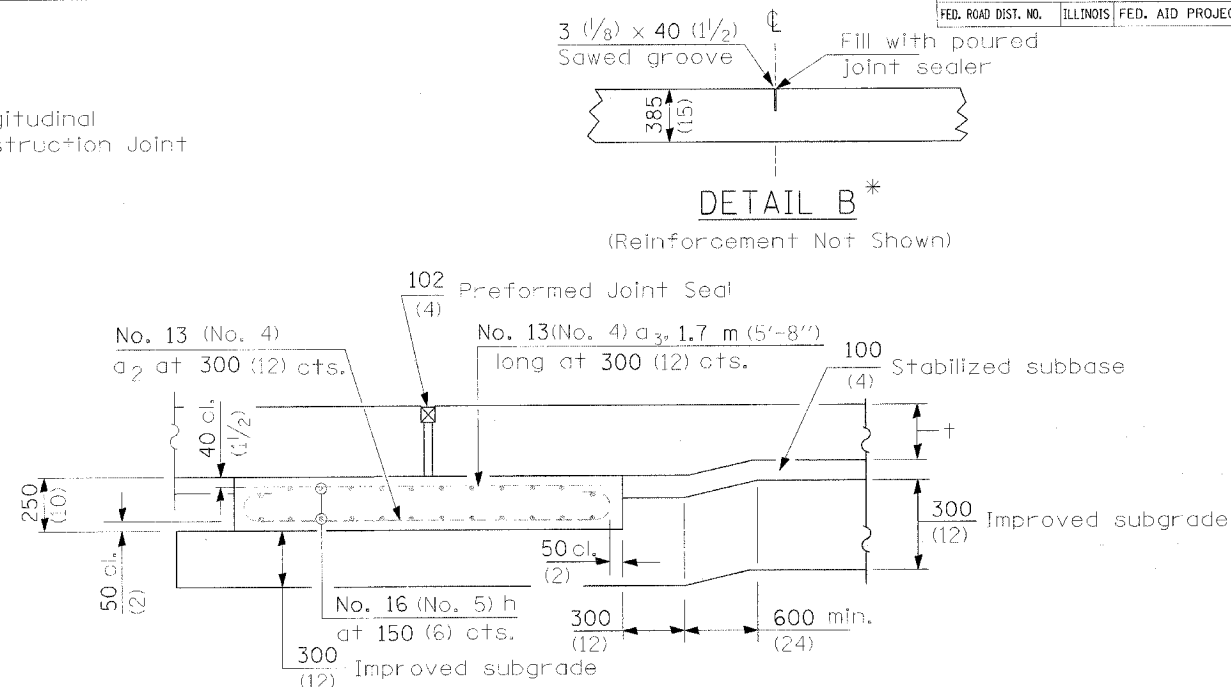
PLAN - WITH SKEW



PLAN - WITHOUT SKEW

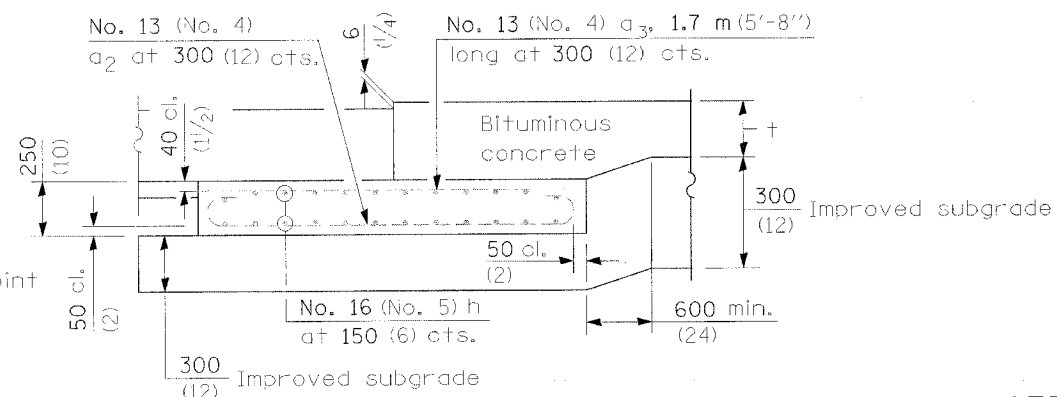
* Saw \perp or lane edge if poured two or more lane widths at a time.
 ** Omitt Reinforcement, tie bars and Long. sawed Jt. for Flexible Pavement.

Rigid Pavement only:
 Wide Flange Beam Terminal Joint (See DETAIL AT BEAM - Standard 421101 or 421106) or 50 (2)
 Trans. Exp. Joint as detailed on Standard 420001.



SECTION G-G - RIGID PAVEMENT

(Showing reinforcement)



SECTION G-G - FLEXIBLE PAVEMENT

(Showing reinforcement)

GENERAL NOTES

THICKNESS-"t"=Thickness of Pavement.
 See Standard 421001 for reinforcement details not shown.
 See Standard 420001 for joint details not shown.
 All dimensions are in millimeters (inches) unless otherwise shown.

BRIDGE APPROACH PAVEMENT (SPECIAL)