

F.A.P. RTE.	SECTION	COUNTY	TOTAL SHEETS	SHEET NO.
315	55-2	McDONOUGH	1025	1

D-94-013-02 ^{#6} 1031

STATE OF ILLINOIS
DEPARTMENT OF TRANSPORTATION
DIVISION OF HIGHWAYS

PROPOSED HIGHWAY PLANS

F.A.P. ROUTE 315 (IL. ROUTE 336)
SECTION 55-2
PROJECT NO. NHF-0315 (046)
NEW CONSTRUCTION; 4-LANE EXPRESSWAY
McDONOUGH COUNTY
C94-013-02

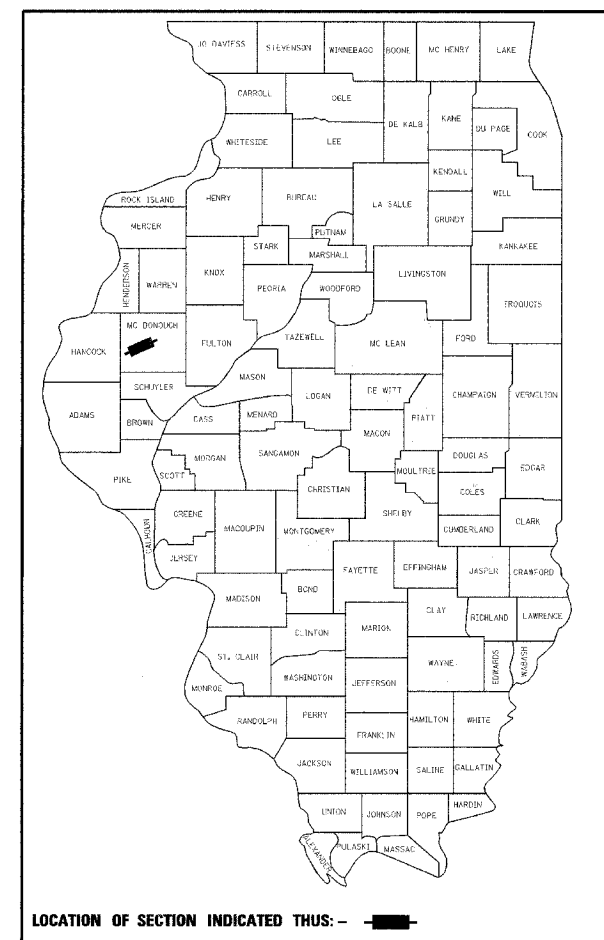
FOR INDEX OF SHEETS, SEE SHEET NO. 2

LIST OF STANDARDS

202001	515001-02	601001	630301-03	701006-02	000001-04
280001-02	542201	601101	631011-02	701101-01	
285001-01	542206	602301	631026-02	701201-02	BLR 17-3
	542301	602306-01	631031-05	701306-01	BLR 21-6
406001-03	542311	602401-01	635001	701326-02	BLR 22-4
406101-02	542401	602701-01	635006-02	701331-02	BLR 23-1
420401-05	542501	604001-02	635011-01	701406-04	BLR 24-1
442201-01	542511	604101	642001	702001-06	
483001-02	542531-01	606001-02	665001-01	704001-02	
	542546	606006	666001	720001	
	542601	606301-02	667101	720006	
	542606	609006-02	664001-01	720011	
		610001-02		780001-01	
		604106		781001-02	

DESIGN DESIGNATION
7000 (ADT) (2028) RURAL 2.26 (FD-20)

SURVEY BOOK NOS.
(BOOK NO'S TO BE FURNISHED BY DEPT.)



LOCATION OF SECTION INDICATED THUS: -

TOTAL SHEETS = 1025

STATE OF ILLINOIS
DEPARTMENT OF TRANSPORTATION
DIVISION OF HIGHWAYS

SUBMITTED 3/31/06 2006

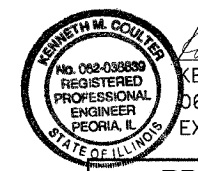
Joseph E. Crowe, Jr. DISTRICT ENGINEER

20

ENGINEER OF DESIGN AND ENVIRONMENT

20

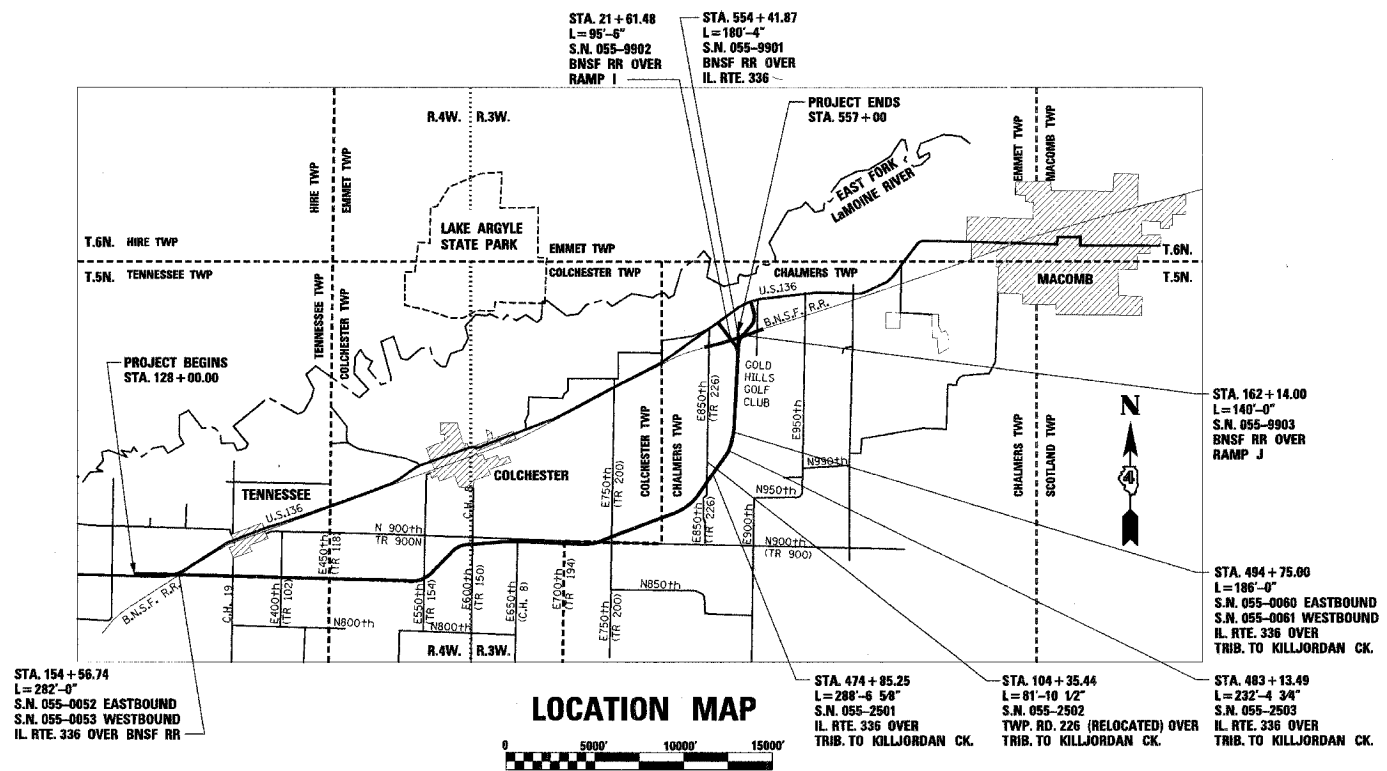
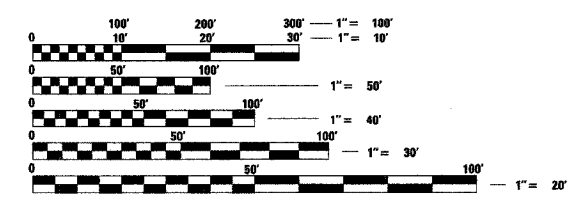
DIRECTOR, DIVISION OF HIGHWAYS



Kenneth M. Coulter
No. 062-038839
REGISTERED PROFESSIONAL ENGINEER
PEORIA, IL
EXP. DATE 11/30/05

3-31-06 DATE

PRINTED BY THE AUTHORITY
OF THE STATE OF ILLINOIS



LOCATION MAP

GROSS LENGTH OF IMPROVEMENT = 42,900 FEET (8.13 MILES)
NET LENGTH OF IMPROVEMENT = 42,900 FEET (8.13 MILES)

DESIGNED BY:



STS Consultants

111 NE Jefferson Ave.
Peoria, Illinois 61602
Ph(309)676-8464
FAX(309)676-5445
DESIGN FIRM REGISTRATION
NO. 184-001518

FULL SIZE PLANS HAVE BEEN PREPARED USING STANDARD ENGINEERING SCALES, REDUCED SIZED PLANS WILL NOT CONFORM TO STANDARD SCALES, IN MAKING MEASUREMENTS ON REDUCED PLANS, THE ABOVE SCALES MAY BE USED.

J.U.L.I.E.
JOINT UTILITY LOCATION INFORMATION FOR EXCAVATION
1-800-892-0123

CATALOG NO. 030010-03D
CONTRACT NO. 68205

- NPDES PERMIT REQUIRED
- QC/QA BITUMINOUS
- QC/QA CONCRETE
- BITUMINOUS SUPERPAVE

IDOT PROJECT ENGINEER: TOM LACY PHONE: 671-3453

IDOT LIASON ENGINEER: ELIAS ELDERZI PHONE: 671-3459