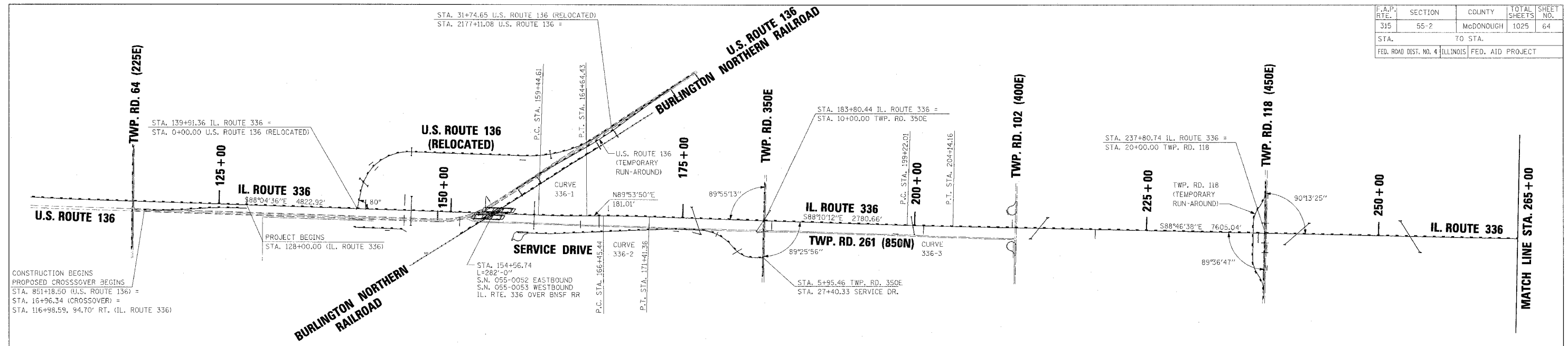
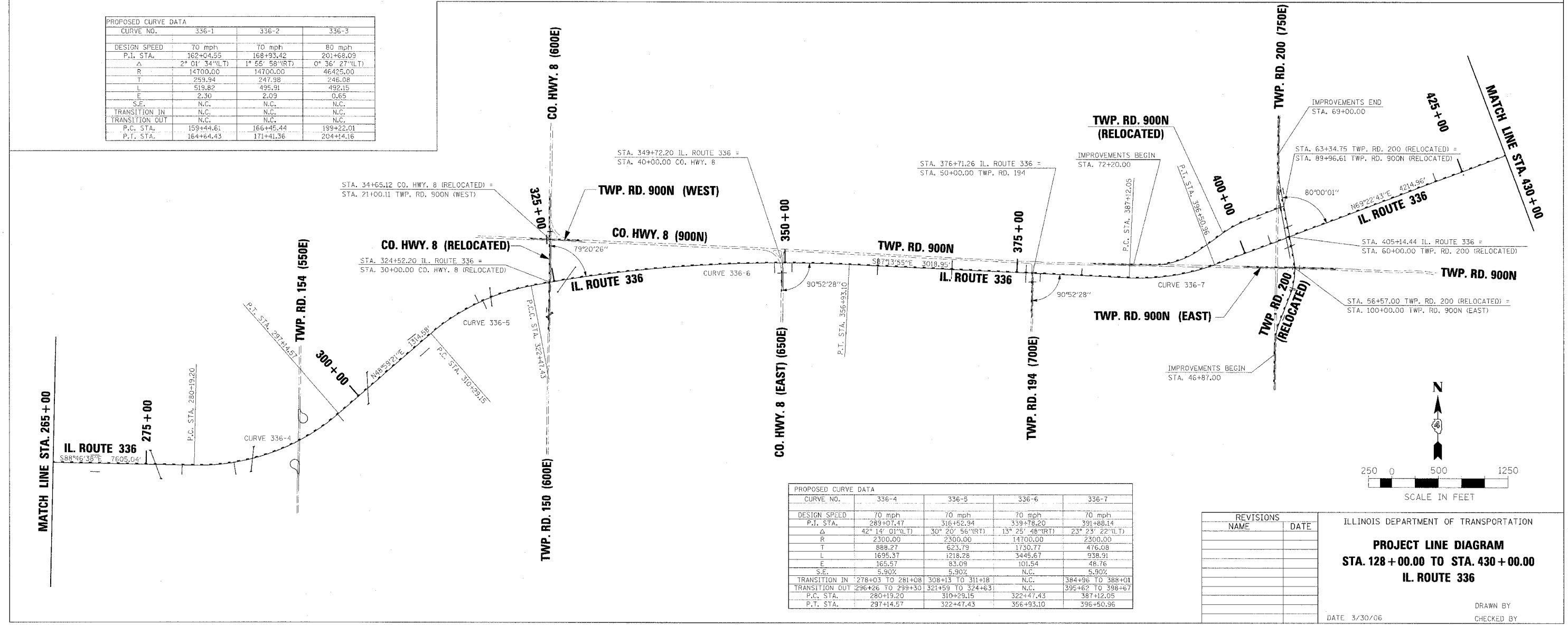


F.A.P. SECTION	COUNTY	TOTAL SHEETS	SHEET NO.
315 55-2	MCDONOUGH	1025	64
STA. TO STA.			
FED. ROAD DIST. NO. 4 ILLINOIS FED. AID PROJECT			



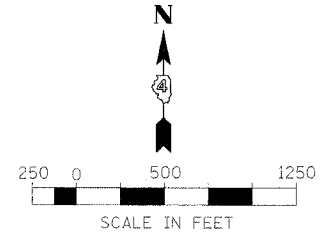
CONSTRUCTION BEGINS
 PROPOSED CROSSOVER BEGINS
 STA. 85+18.50 (U.S. ROUTE 136) =
 STA. 16+96.34 (CROSSOVER) =
 STA. 116+98.59, 94.70' RT. (IL. ROUTE 336)

PROPOSED CURVE DATA			
CURVE NO.	336-1	336-2	336-3
DESIGN SPEED	70 mph	70 mph	80 mph
P.I. STA.	162+04.55	168+93.42	201+68.09
Δ	2° 01' 34"(LT)	1° 55' 58"(RT)	0° 36' 27"(LT)
R	14700.00	14700.00	46425.00
T	259.94	247.98	246.08
L	519.82	495.91	492.15
E	2.30	2.09	0.65
S.E.	N.C.	N.C.	N.C.
TRANSITION IN	N.C.	N.C.	N.C.
TRANSITION OUT	N.C.	N.C.	N.C.
P.C. STA.	159+44.61	166+45.44	199+22.01
P.T. STA.	164+64.43	171+41.36	204+44.16



PROPOSED CURVE DATA				
CURVE NO.	336-4	336-5	336-6	336-7
DESIGN SPEED	70 mph	70 mph	70 mph	70 mph
P.I. STA.	289+07.47	316+52.94	339+78.20	391+88.14
Δ	42° 14' 01"(LT)	30° 20' 56"(RT)	13° 25' 48"(RT)	23° 23' 22"(LT)
R	2300.00	2300.00	14700.00	2300.00
T	888.27	623.79	1730.77	476.08
L	1695.37	1218.28	3445.67	938.91
E	165.57	83.09	101.54	48.76
S.E.	5.90%	5.90%	N.C.	5.90%
TRANSITION IN	278+03 TO 281+08	308+13 TO 311+18	N.C.	384+96 TO 388+01
TRANSITION OUT	296+26 TO 299+30	321+59 TO 324+63	N.C.	395+62 TO 398+67
P.C. STA.	280+19.20	310+29.15	322+47.43	387+12.05
P.T. STA.	297+14.57	322+47.43	356+93.10	396+50.96

REVISIONS	
NAME	DATE



ILLINOIS DEPARTMENT OF TRANSPORTATION
PROJECT LINE DIAGRAM
STA. 128 + 00.00 TO STA. 430 + 00.00
IL. ROUTE 336
 DATE 3/30/06
 DRAWN BY
 CHECKED BY