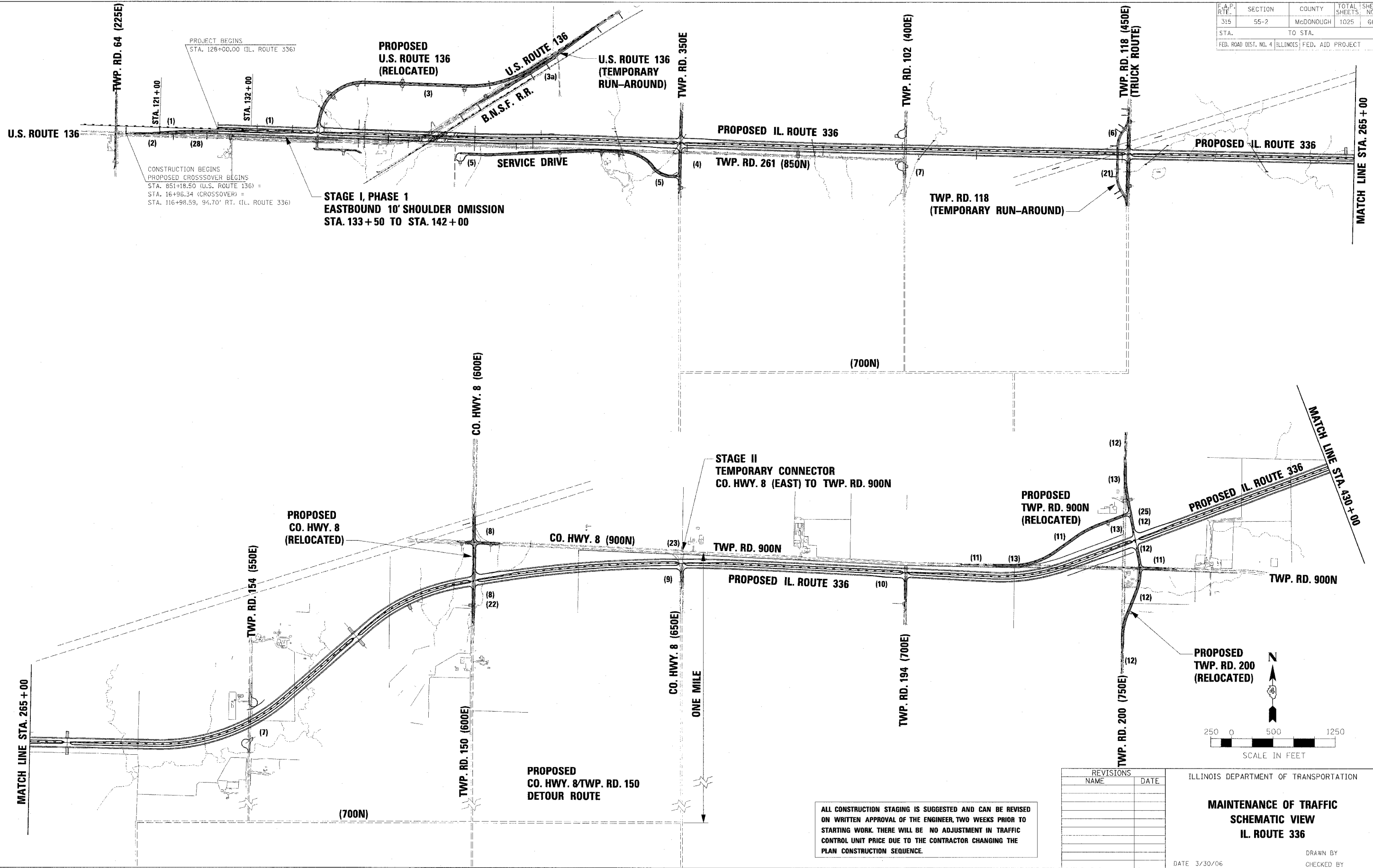


F.A.P. RTE.	SECTION	COUNTY	TOTAL SHEETS	SHEET NO.
315	55-2	McDONOUGH	1025	66
STA.		TO STA.		
FED. ROAD DIST. NO. 4		ILLINOIS FED. AID PROJECT		



PROJECT BEGINS  
STA. 126+00.00 (IL. ROUTE 336)

CONSTRUCTION BEGINS  
PROPOSED CROSSOVER BEGINS  
STA. 851+18.50 (U.S. ROUTE 136) =  
STA. 16+96.34 (CROSSOVER) =  
STA. 116+98.59, 94.70' RT. (IL. ROUTE 336)

**STAGE I, PHASE 1  
EASTBOUND 10' SHOULDER OMISSION  
STA. 133+50 TO STA. 142+00**

**STAGE II  
TEMPORARY CONNECTOR  
CO. HWY. 8 (EAST) TO TWP. RD. 900N**

**PROPOSED  
CO. HWY. 8/TWP. RD. 150  
DETOUR ROUTE**

ALL CONSTRUCTION STAGING IS SUGGESTED AND CAN BE REVISED ON WRITTEN APPROVAL OF THE ENGINEER, TWO WEEKS PRIOR TO STARTING WORK. THERE WILL BE NO ADJUSTMENT IN TRAFFIC CONTROL UNIT PRICE DUE TO THE CONTRACTOR CHANGING THE PLAN CONSTRUCTION SEQUENCE.

REVISIONS	
NAME	DATE

ILLINOIS DEPARTMENT OF TRANSPORTATION

**MAINTENANCE OF TRAFFIC  
SCHEMATIC VIEW  
IL. ROUTE 336**

DATE 3/30/06

DRAWN BY  
CHECKED BY