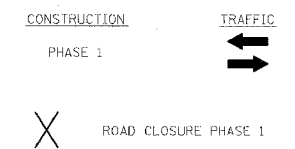
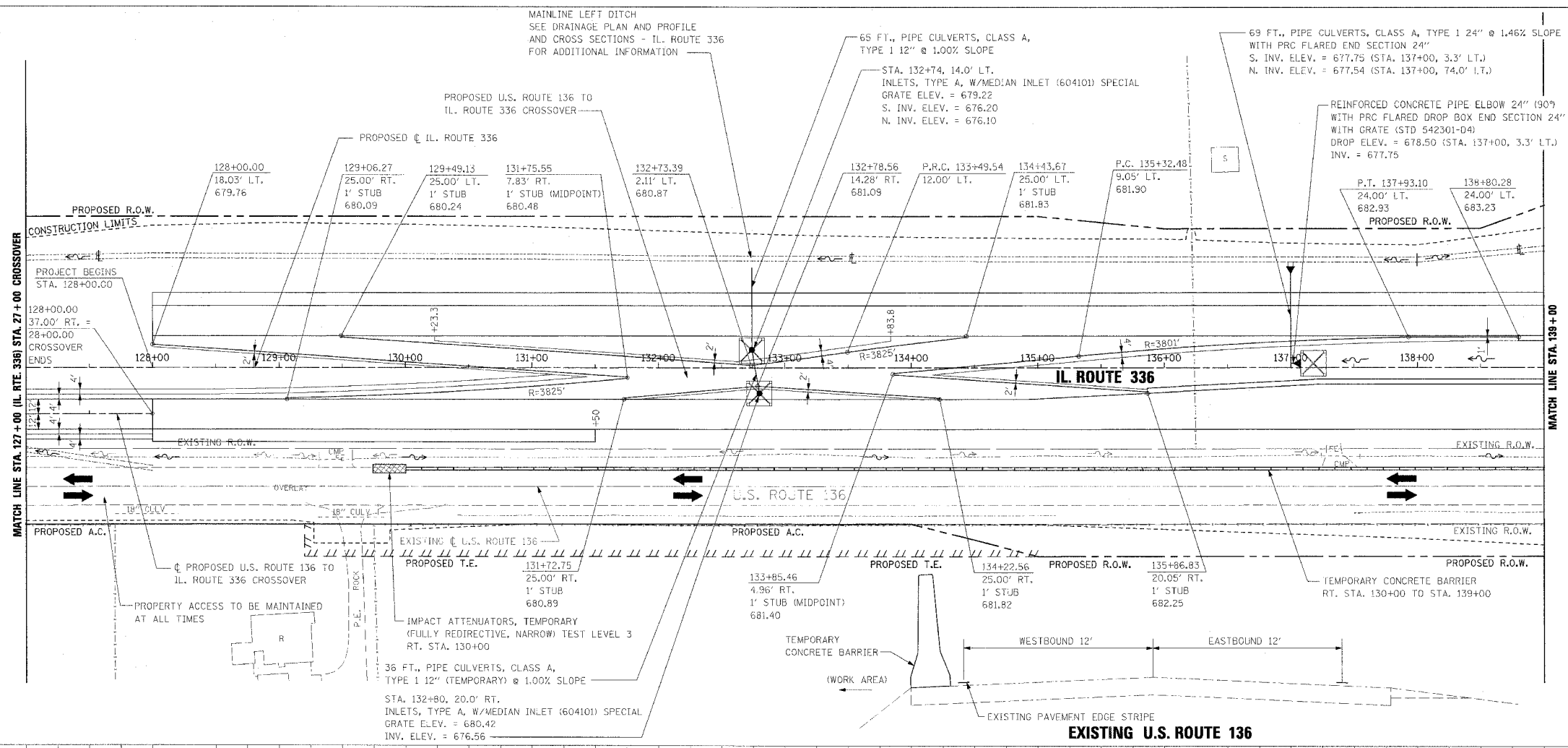


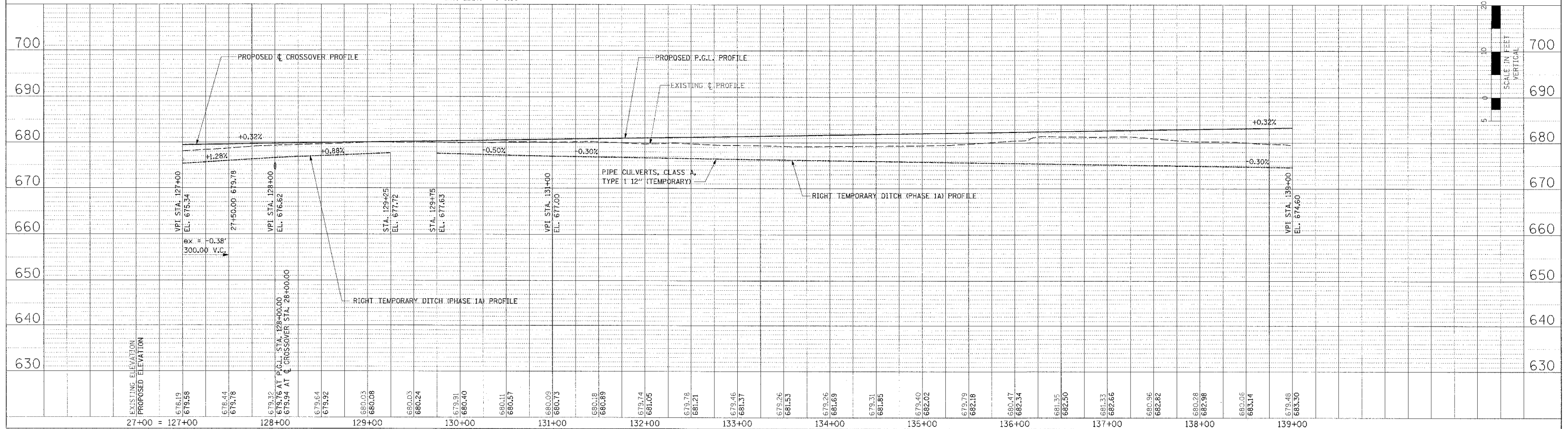
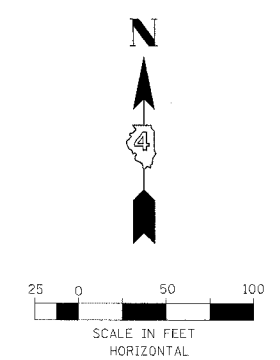
TEMPORARY EROSION CONTROL LEGEND
 TEMPORARY DITCH CHECK
 INLET AND PIPE PROTECTION

MAINLINE LEFT DITCH
 SEE DRAINAGE PLAN AND PROFILE
 AND CROSS SECTIONS - IL. ROUTE 336
 FOR ADDITIONAL INFORMATION

F.A.P. RTE.	SECTION	COUNTY	TOTAL SHEETS	SHEET NO.
315	55-2	McDONOUGH	1025	71
STA. 127+00		TO STA. 139+00		
FED. ROAD DIST. NO. 4		ILLINOIS		FED. AID PROJECT



- CONSTRUCTION:
1. CONSTRUCT TEMPORARY CONCRETE BARRIER AND ATTENUATORS. RT. STA. 130+00± TO STA. 139+00
 2. CONSTRUCT TEMPORARY DRAINAGE (LT. SIDE U.S. ROUTE 136). STA. 127+00 TO STA. 139+00
 3. CONSTRUCT EASTBOUND AND WESTBOUND IL. ROUTE 336. STA. 128+00 TO STA. 139+00 OMIT 10' SHOULDER EASTBOUND LANES. STA. 133+50± TO STA. 139+00
 4. CONSTRUCT CROSSOVER STA. 128+00 TO STA. 138+00±
- TRAFFIC:
 1. MAINTAIN 2 WAY TRAFFIC ON EXISTING U.S. ROUTE 136.
- TRAFFIC CONTROL
 HIGHWAY STANDARDS:
 701006
 701306
 701326



MAINTENANCE OF TRAFFIC - STAGE I - PHASE 1 - IL. ROUTE 336 - STA. 127+00 TO STA. 139+00

PLAN	DATE	BY
DESIGNED		
PROPOSED		
PLOTTED		
CHECKED		
DATE		
NO.		

PROFILE	DATE	BY
DESIGNED		
PROPOSED		
PLOTTED		
CHECKED		
DATE		
NO.		