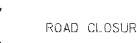
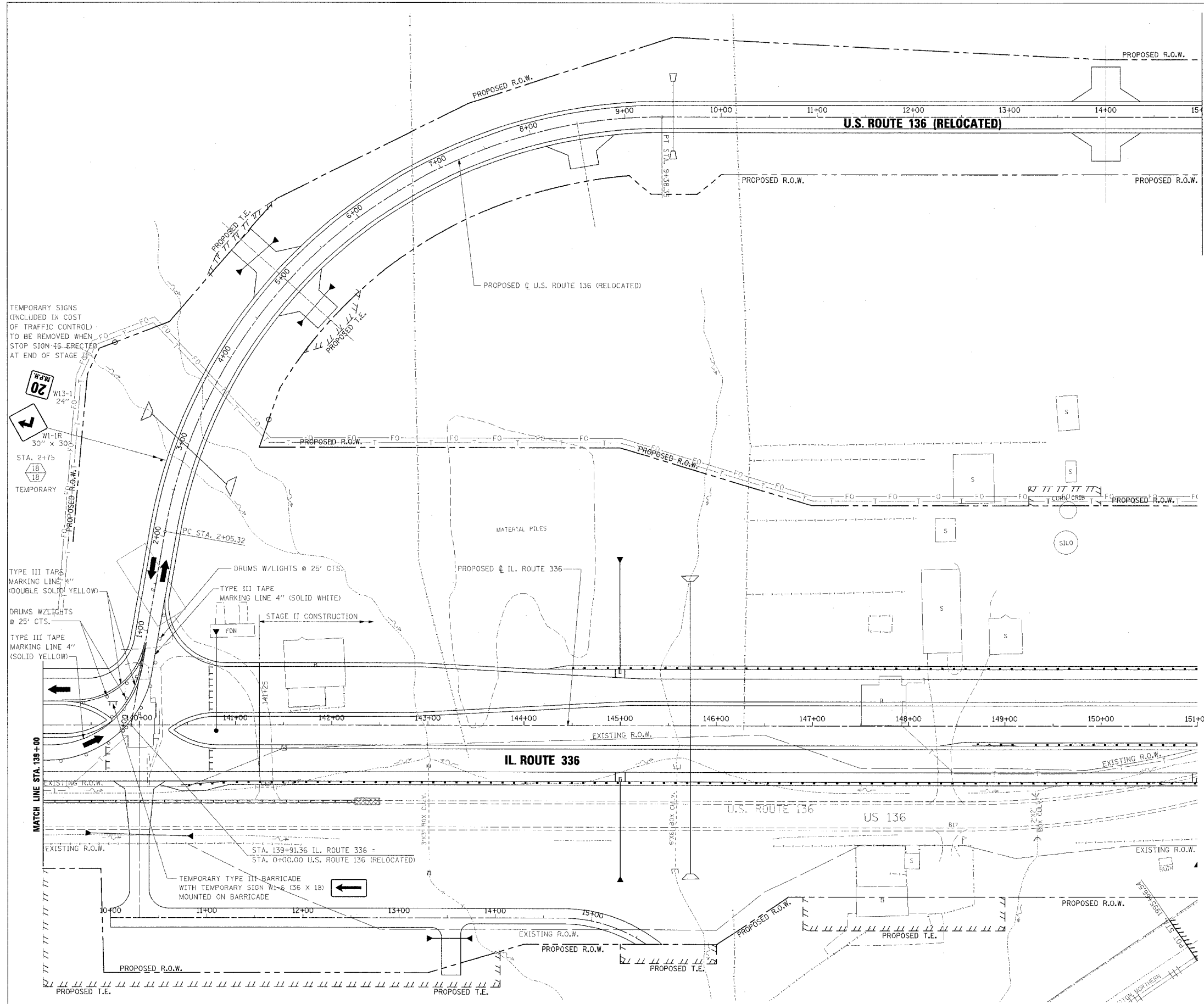


F.A.P. RTE.	SECTION	COUNTY	TOTAL SHEETS	SHEET NO.
315	55-2	McDONOUGH	1025	82
STA. 139+00		TO STA. 151+00		
FED. ROAD DIST. NO. 4		ILLINOIS	FED. AID PROJECT	



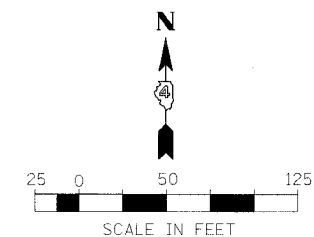
TYPE III BARRICADE 1

- CONSTRUCTION:
1. INSTALL SIGNING AND PAVEMENT STRIPING. SHIFT TRAFFIC TO U.S. ROUTE 136 (RELOCATED).
 2. REMOVE U.S. ROUTE 136 PAVEMENT.
 3. COMPLETE SHOULDER ON EASTBOUND LANES.
 4. CONSTRUCT PERMANENT DRAINAGE.
 5. CONSTRUCT DRIVEWAYS.
 6. CONTINUE WITH IL. ROUTE 336 CONSTRUCTION.

- TRAFFIC:
1. ALL TRAFFIC SHIFTED TO U.S. ROUTE 136 (RELOCATED).
 2. FIELD ACCESS FROM OLD U.S. ROUTE 136 IS CLOSED; FIELD ENTRANCES ARE ON IL. ROUTE 336 AND U.S. ROUTE 136 (RELOCATED).

TRAFFIC CONTROL
HIGHWAY STANDARD:
701006

NOTE:
FOR PERMANENT PAVEMENT MARKING SEE
PAVEMENT MARKING AND SIGNING PLAN.



REVISIONS	
NAME	DATE

ILLINOIS DEPARTMENT OF TRANSPORTATION
**MAINTENANCE OF TRAFFIC
IL. ROUTE 336
STAGE I PHASE 2 AND STAGE II
STA. 139+00 TO STA. 151+00**

DATE 3/30/06
DRAWN BY
CHECKED BY