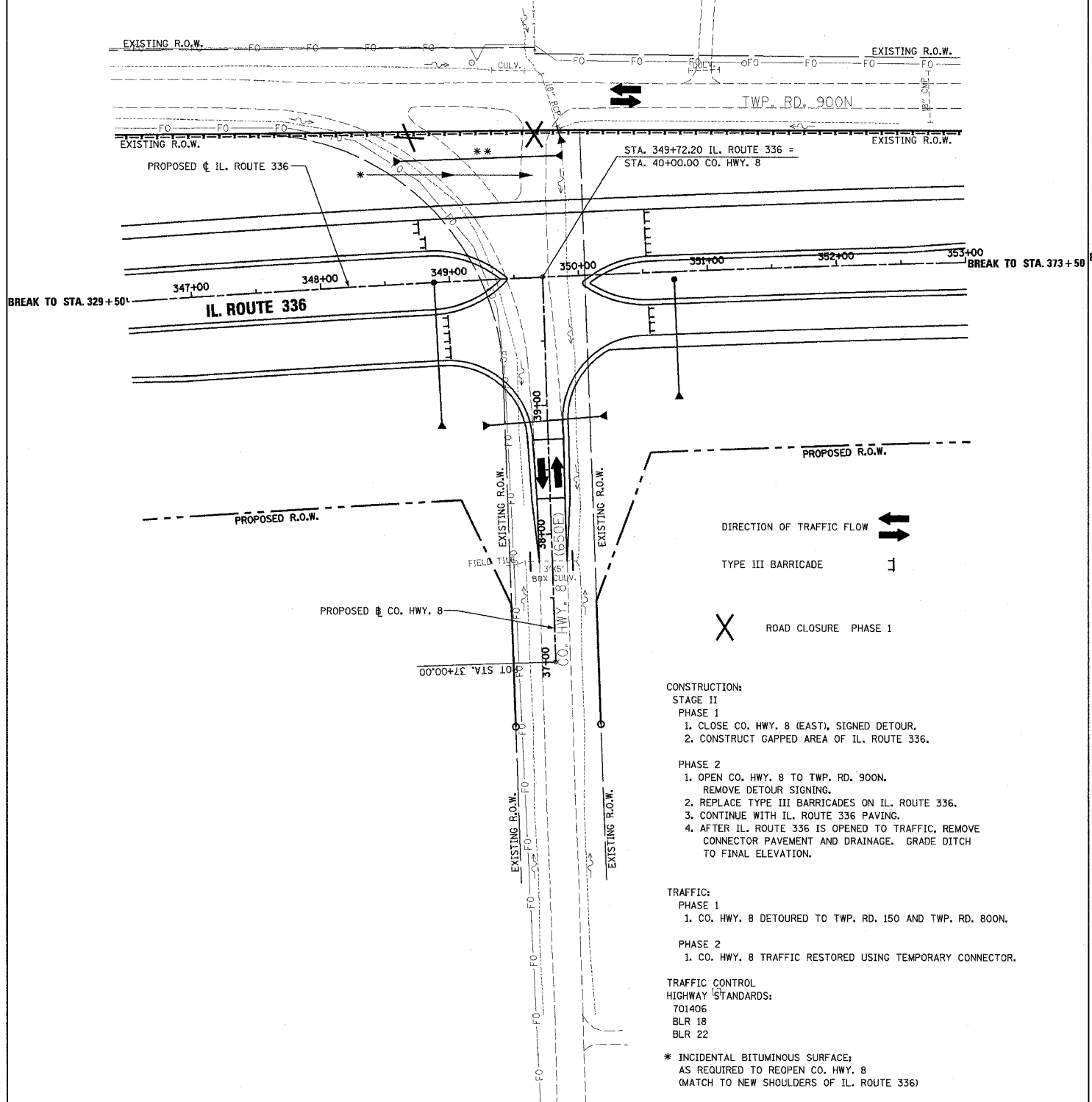


F.A.P. RTE.	SECTION	COUNTY	TOTAL SHEETS	SHEET NO.
315	55-2	McDONOUGH	1025	87
STA. 329+50	TO STA. 353+00			
STA. 373+50	TO STA. 380+00			
FED. ROAD DIST. NO. 4 ILLINOIS FED. AID PROJECT				



CONSTRUCTION:
STAGE II
PHASE 1
 1. CLOSE CO. HWY. 8 (EAST), SIGNED DETOUR.
 2. CONSTRUCT GAPPED AREA OF IL. ROUTE 336.

PHASE 2
 1. OPEN CO. HWY. 8 TO TWP. RD. 900N.
 REMOVE DETOUR SIGNING.
 2. REPLACE TYPE III BARRICADES ON IL. ROUTE 336.
 3. CONTINUE WITH IL. ROUTE 336 PAVING.
 4. AFTER IL. ROUTE 336 IS OPENED TO TRAFFIC, REMOVE CONNECTOR PAVEMENT AND DRAINAGE. GRADE DITCH TO FINAL ELEVATION.

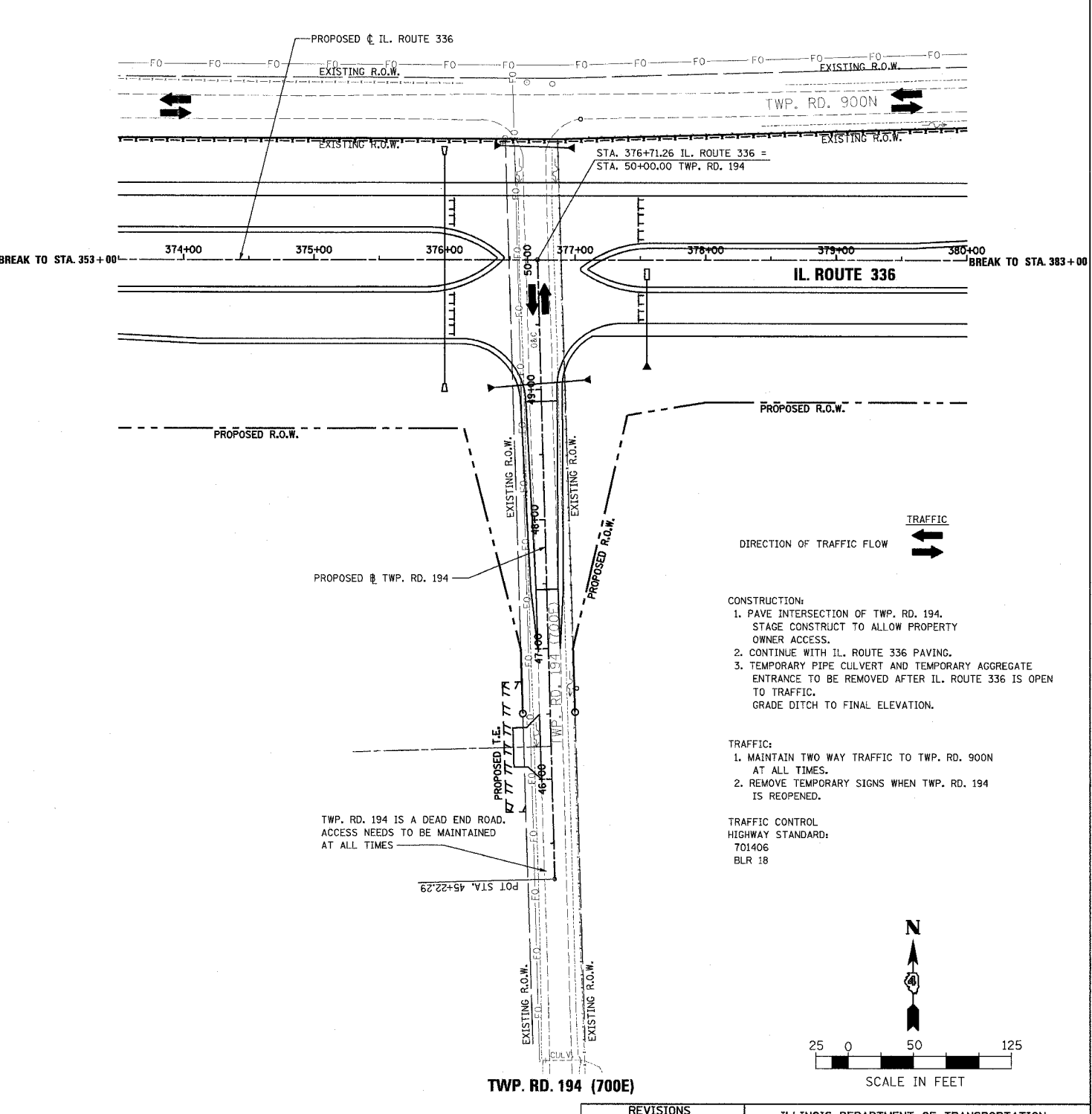
TRAFFIC:
PHASE 1
 1. CO. HWY. 8 DETOURED TO TWP. RD. 150 AND TWP. RD. 800N.

PHASE 2
 1. CO. HWY. 8 TRAFFIC RESTORED USING TEMPORARY CONNECTOR.

TRAFFIC CONTROL
 HIGHWAY STANDARDS:
 701406
 BLR 18
 BLR 22

* INCIDENTAL BITUMINOUS SURFACE;
 AS REQUIRED TO REOPEN CO. HWY. 8
 (MATCH TO NEW SHOULDERS OF IL. ROUTE 336)

** TEMPORARY PIPE CULVERT AND PAVEMENT
 TO BE REMOVED AFTER IL. ROUTE 336 IS
 OPENED TO TRAFFIC

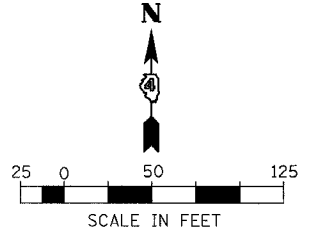


CONSTRUCTION:
 1. PAVE INTERSECTION OF TWP. RD. 194.
 STAGE CONSTRUCT TO ALLOW PROPERTY OWNER ACCESS.
 2. CONTINUE WITH IL. ROUTE 336 PAVING.
 3. TEMPORARY PIPE CULVERT AND TEMPORARY AGGREGATE ENTRANCE TO BE REMOVED AFTER IL. ROUTE 336 IS OPEN TO TRAFFIC.
 GRADE DITCH TO FINAL ELEVATION.

TRAFFIC:
 1. MAINTAIN TWO WAY TRAFFIC TO TWP. RD. 900N AT ALL TIMES.
 2. REMOVE TEMPORARY SIGNS WHEN TWP. RD. 194 IS REOPENED.

TRAFFIC CONTROL
 HIGHWAY STANDARD:
 701406
 BLR 18

TWP. RD. 194 IS A DEAD END ROAD.
 ACCESS NEEDS TO BE MAINTAINED
 AT ALL TIMES



REVISIONS	
NAME	DATE

ILLINOIS DEPARTMENT OF TRANSPORTATION
MAINTENANCE OF TRAFFIC - STAGE II
IL. ROUTE 336
STA. 329+50 TO STA. 353+00 AND
STA. 373+50 TO STA. 380+00
 DRAWN BY
 DATE 3/30/06
 CHECKED BY

K01-1-18-104-07 4/17/2006 8:28:22 AM