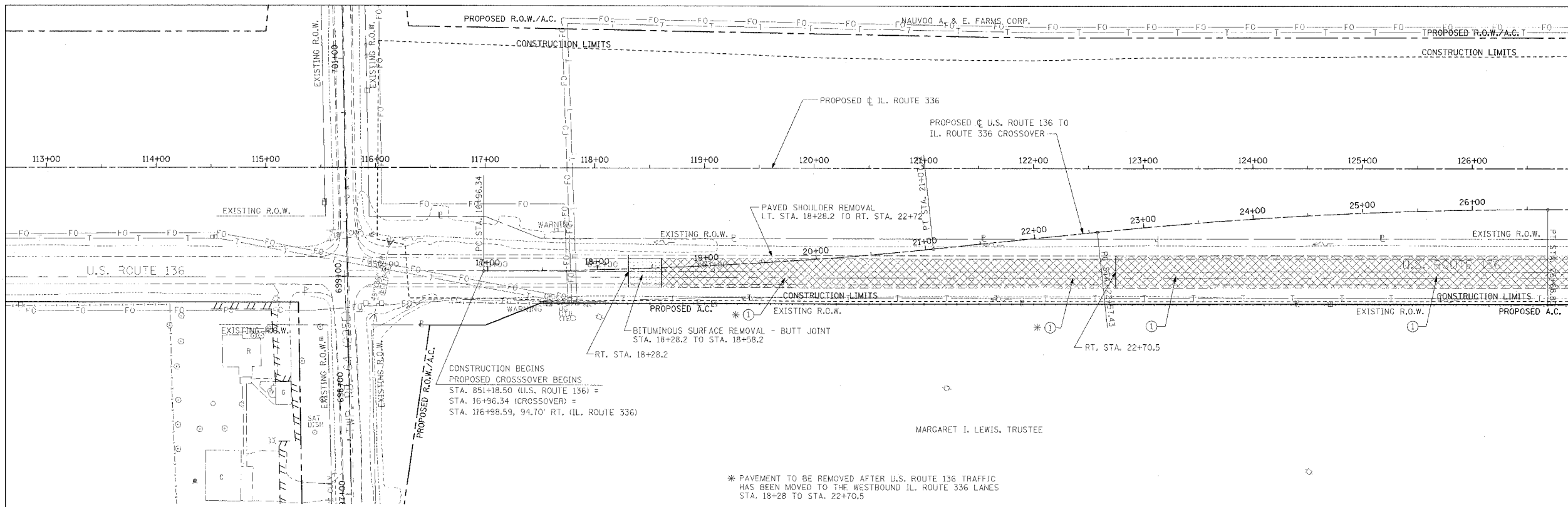
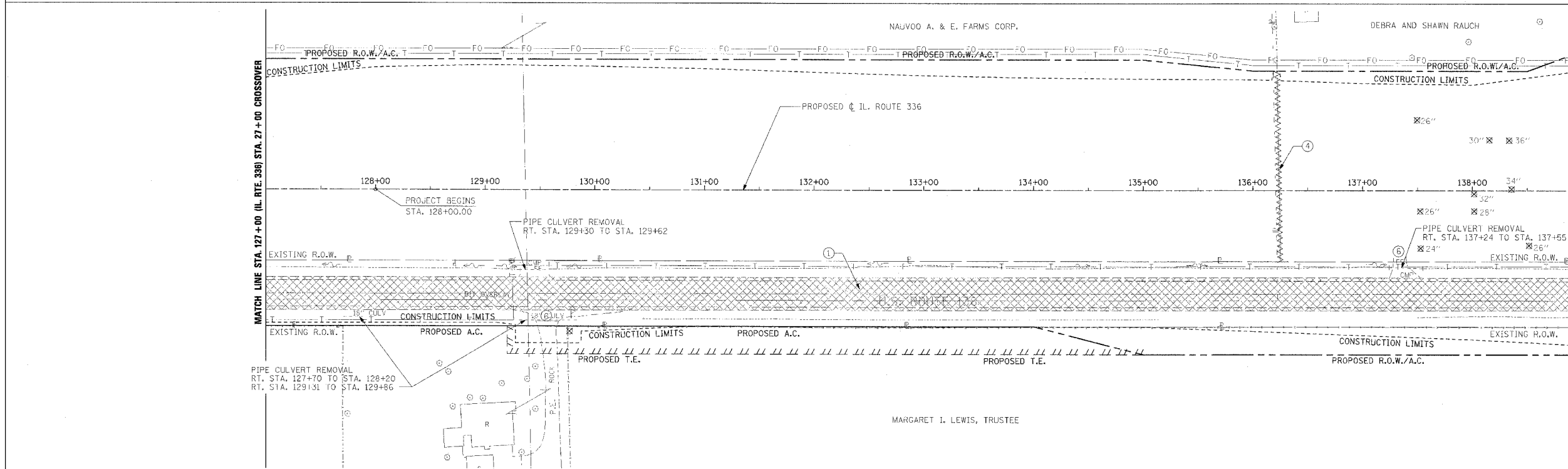


F.A.P. RTE.	SECTION	COUNTY	TOTAL SHEETS	SHEET NO.
315	55-2	McDONOUGH	1025	94
STA. 116+00		TO STA. 139+00		
FED. ROAD DIST. NO. 4 ILLINOIS FED. AID PROJECT				

- ① PAVEMENT REMOVAL (EST. 16" DEPTH)  
RT. STA. 22+70.5 TO RT. STA. 27+00
- \* ① PAVEMENT REMOVAL (EST. 16" DEPTH)  
RT. STA. 18+28.2 TO RT. STA. 22+70.5

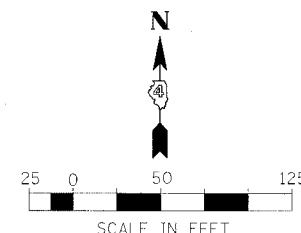


MATCH LINE STA. 127+00 (IL. RTE. 336) STA. 27+00 CROSSOVER



MATCH LINE STA. 139+00

- ① PAVEMENT REMOVAL (EST. 16" DEPTH)  
RT. STA. 127+00 TO RT. STA. 139+00
- ④ FENCE REMOVAL  
LT. STA. 136+22 TO RT. STA. 136+25



- LEGEND**  
(IL. RTE. 336 REMOVAL ONLY)
- ① [Cross-hatch pattern] PAVEMENT REMOVAL INCLUDES FULL-DEPTH AND RIGID PAVEMENT, AND PCC BASE COURSE
  - ② [Diagonal hatch pattern] BITUMINOUS SURFACE REMOVAL - VARIABLE DEPTH
  - ③ [Dotted pattern] TREE REMOVAL, ACRES
  - ④ [Wavy line pattern] FENCE REMOVAL
  - ⑤ [Diagonal hatch pattern] FULL-DEPTH AND RIGID PAVEMENT, AND PCC BASE COURSE TO BE BROKEN UP AND LEFT IN PLACE AS PER ARTICLE 205.03 (COST TO BE INCLUDED IN EARTH EXCAVATION)
  - ⑥ [Symbol] NOTE: FLEXIBLE PAVEMENT (AGGREGATE SURFACE OR BITUMINOUS SURFACE OVER FLEXIBLE BASE) TREATMENT REMOVAL AS PER ARTICLE 205.03 (COST TO BE INCLUDED IN EARTH EXCAVATION)

NOTE: SEE STATUS OF UTILITIES TO BE ADJUSTED FOR FURTHER INFORMATION ON UTILITY CONFLICTS.

REVISIONS	
NAME	DATE

ILLINOIS DEPARTMENT OF TRANSPORTATION

**REMOVAL ITEMS**  
**IL. ROUTE 336**  
**STA. 116+00 TO STA. 139+00**

DATE 3/30/06

DRAWN BY  
CHECKED BY