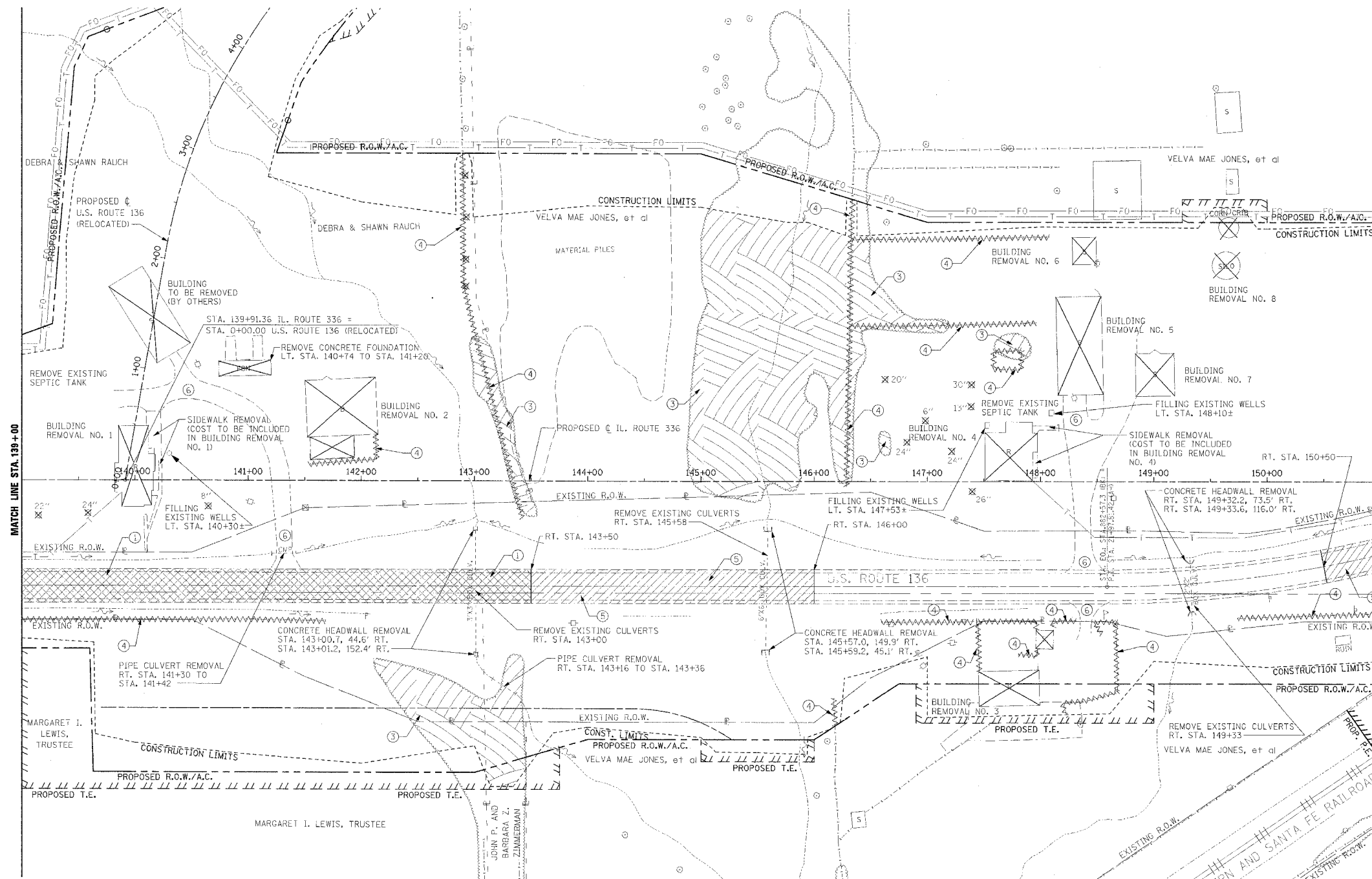


F.A.P. RTE.	SECTION	COUNTY	TOTAL SHEETS	SHEET NO.
315	55-2	McDONOUGH	1025	95
STA. 139+00		TO STA. 151+00		
FED. ROAD DIST. NO. 4		ILLINOIS		FED. AID PROJECT

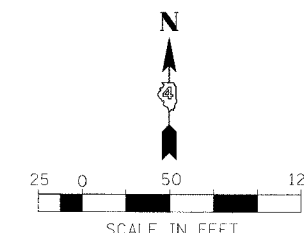
- ① PAVEMENT REMOVAL (EST. 16" DEPTH)
RT. STA. 139+00 TO RT. STA. 143+50
- ③ TREE REMOVAL, ACRES
RT. STA. 142+10 TO RT. STA. 143+45
LT. STA. 143+00 TO RT. STA. 143+55
LT. STA. 144+90 TO LT. STA. 147+20
LT. STA. 146+80 TO LT. STA. 146+70
LT. STA. 147+60 TO LT. STA. 147+90
- ④ FENCE REMOVAL
RT. STA. 139+00 TO RT. STA. 141+70
LT. STA. 141+53 TO LT. STA. 142+12
LT. STA. 142+90 TO RT. STA. 143+43
RT. STA. 146+17 TO RT. STA. 146+18
RT. STA. 146+28 TO LT. STA. 146+34
LT. STA. 146+31 TO LT. STA. 147+96
LT. STA. 146+33 TO LT. STA. 148+09
RT. STA. 146+58 TO RT. STA. 147+96
RT. STA. 147+45 TO RT. STA. 147+46
LT. STA. 147+58 TO LT. STA. 147+83
RT. STA. 147+80 TO RT. STA. 147+96
RT. STA. 148+10 TO RT. STA. 148+31
RT. STA. 148+20 TO RT. STA. 148+67
RT. STA. 149+73 TO RT. STA. 151+00
- ⑤ PAVEMENT TO BE BROKEN UP
(FOR INFORMATION ONLY)
RT. STA. 143+50 TO STA. 146+00
RT. STA. 150+50 TO STA. 151+00



LEGEND

- ① [Symbol] PAVEMENT REMOVAL INCLUDES FULL-DEPTH AND RIGID PAVEMENT, AND PCC BASE COURSE
- ② [Symbol] BITUMINOUS SURFACE REMOVAL - VARIABLE DEPTH
- ③ [Symbol] TREE REMOVAL, ACRES
- ④ [Symbol] FENCE REMOVAL
- ⑤ [Symbol] FULL-DEPTH AND RIGID PAVEMENT, AND PCC BASE COURSE TO BE BROKEN UP AND LEFT IN PLACE AS PER ARTICLE 205.03 (COST TO BE INCLUDED IN EARTH EXCAVATION)
- ⑥ [Symbol] TREE REMOVAL
- ⑦ [Symbol] NOTE: FLEXIBLE PAVEMENT (AGGREGATE SURFACE OR BITUMINOUS SURFACE OVER FLEXIBLE BASE) TREATMENT REMOVAL AS PER ARTICLE 205.03 (COST TO BE INCLUDED IN EARTH EXCAVATION)

NOTE: SEE STATUS OF UTILITIES TO BE ADJUSTED FOR FURTHER INFORMATION ON UTILITY CONFLICTS.



REVISIONS	
NAME	DATE

ILLINOIS DEPARTMENT OF TRANSPORTATION

**REMOVAL ITEMS
IL. ROUTE 336
STA. 139+00 TO STA. 151+00**

DATE 3/30/06

DRAWN BY
CHECKED BY