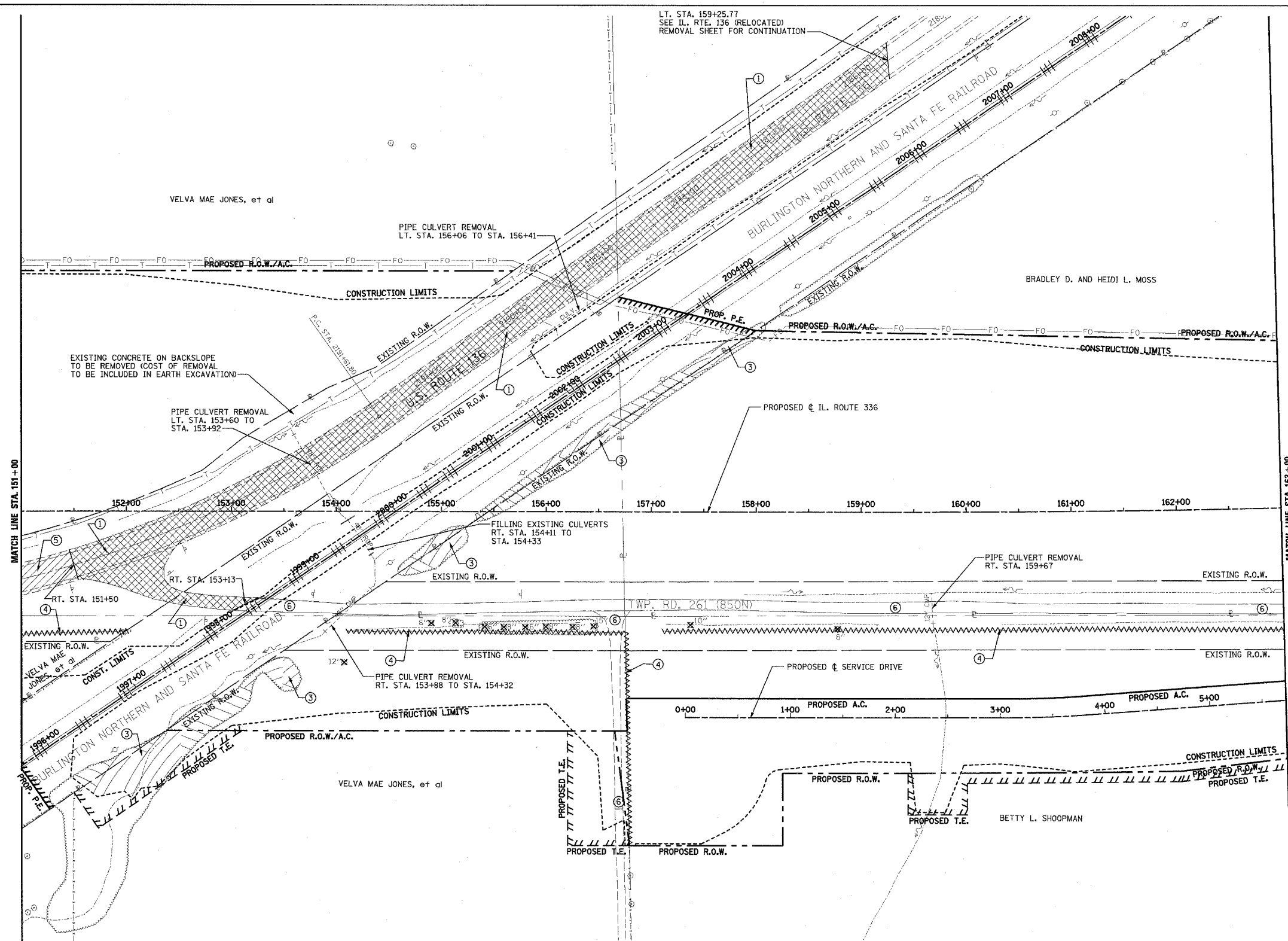


F.A.P. RTE.	SECTION	COUNTY	TOTAL SHEETS	SHEET NO.
315	55-2	McDONOUGH	1025	96
STA. 151+00		TO STA. 163+00		
FED. ROAD DIST. NO. 4 ILLINOIS FED. AID PROJECT				

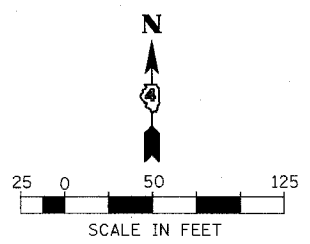
- ① PAVEMENT REMOVAL (EST. 16" DEPTH)  
RT. STA. 151+50 TO LT. STA. 159+25.77
- ③ TREE REMOVAL, ACRES  
RT. STA. 151+48 TO RT. STA. 153+70  
RT. STA. 154+60 TO RT. STA. 155+25  
RT. STA. 155+30 TO LT. STA. 158+00
- ④ FENCE REMOVAL  
RT. STA. 151+00 TO RT. STA. 152+00  
RT. STA. 154+10 TO RT. STA. 156+75  
RT. STA. 157+10 TO RT. STA. 163+00



**LEGEND**

- ① PAVEMENT REMOVAL INCLUDES FULL-DEPTH AND RIGID PAVEMENT, AND PCC BASE COURSE
- ② BITUMINOUS SURFACE REMOVAL - VARIABLE DEPTH
- ③ TREE REMOVAL, ACRES
- ④ FENCE REMOVAL
- ⑤ FULL-DEPTH AND RIGID PAVEMENT, AND PCC BASE COURSE TO BE BROKEN UP AND LEFT IN PLACE AS PER ARTICLE 205.03 (COST TO BE INCLUDED IN EARTH EXCAVATION)
- ⑥ NOTE: FLEXIBLE PAVEMENT (AGGREGATE SURFACE OR BITUMINOUS SURFACE OVER FLEXIBLE BASE) TREATMENT REMOVAL AS PER ARTICLE 205.03 (COST TO BE INCLUDED IN EARTH EXCAVATION)

NOTE: SEE STATUS OF UTILITIES TO BE ADJUSTED FOR FURTHER INFORMATION ON UTILITY CONFLICTS.



REVISIONS	
NAME	DATE

ILLINOIS DEPARTMENT OF TRANSPORTATION  
**REMOVAL ITEMS**  
**IL. ROUTE 336**  
**STA. 151+00 TO STA. 163+00**  
 DRAWN BY  
 CHECKED BY  
 DATE 3/30/06