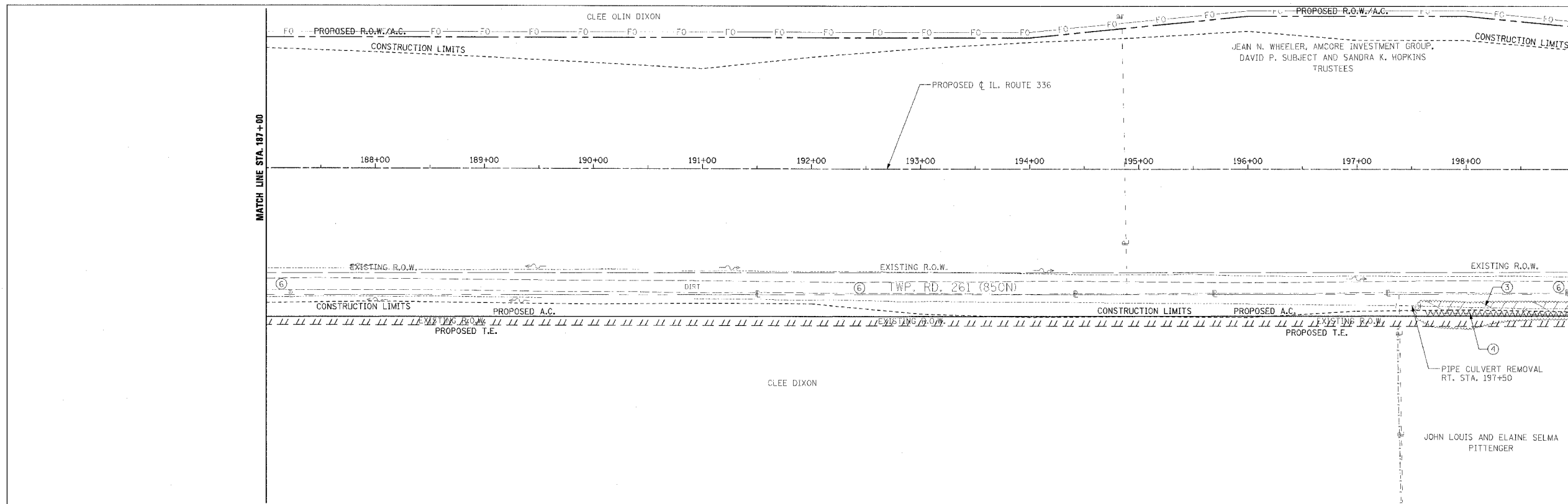
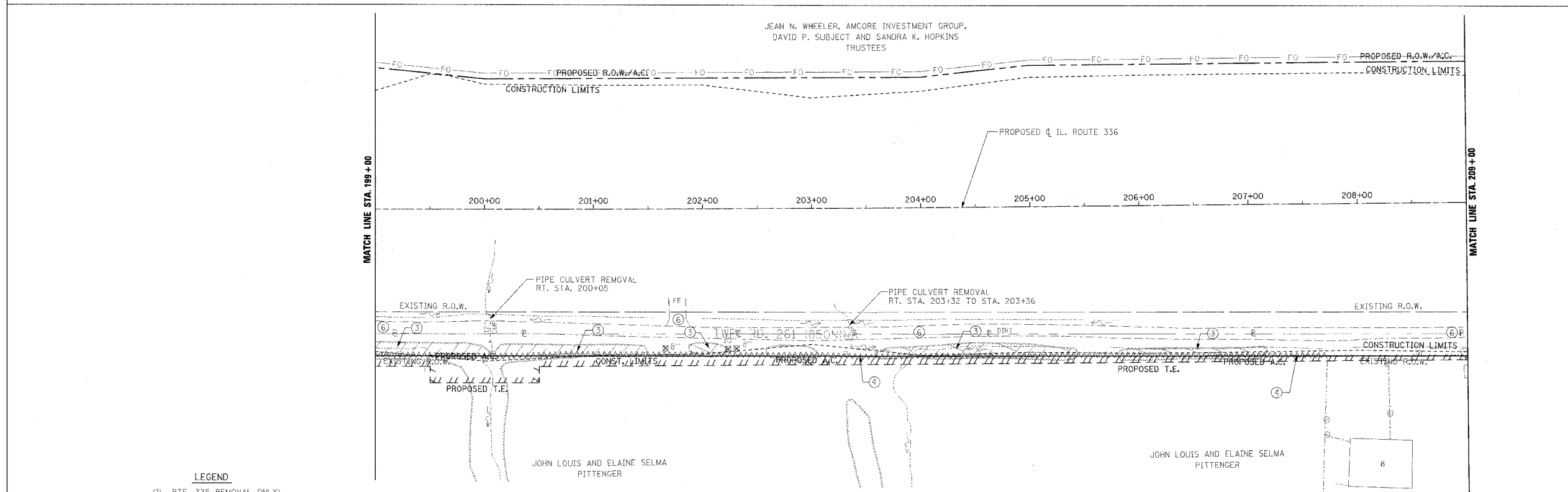


F.A.P. RTE.	SECTION	COUNTY	TOTAL SHEETS	SHEET NO.
315	55-2	MCDONOUGH	1025	98
STA. 187+00		TO STA. 209+00		
FED. ROAD DIST. NO. 4 ILLINOIS FED. AID PROJECT				



③ TREE REMOVAL, ACRES
RT. STA. 197+50 TO RT. STA. 199+00

④ FENCE REMOVAL
RT. STA. 197+60 TO RT. STA. 199+00



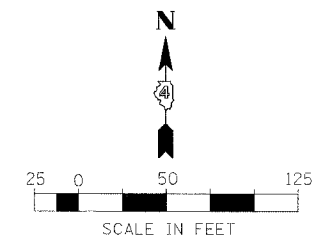
③ TREE REMOVAL, ACRES
RT. STA. 199+00 TO RT. STA. 201+50
RT. STA. 201+85 TO RT. STA. 202+25
RT. STA. 203+65 TO RT. STA. 205+40
RT. STA. 205+80 TO RT. STA. 207+15

④ FENCE REMOVAL
RT. STA. 199+00 TO RT. STA. 207+73

LEGEND

- ① PAVEMENT REMOVAL INCLUDES FULL-DEPTH AND RIGID PAVEMENT, AND PCC BASE COURSE
- ② BITUMINOUS SURFACE REMOVAL - VARIABLE DEPTH
- ③ TREE REMOVAL, ACRES
- ④ FENCE REMOVAL
- ⑤ FULL-DEPTH AND RIGID PAVEMENT, AND PCC BASE COURSE TO BE BROKEN UP AND LEFT IN PLACE AS PER ARTICLE 205.03 (COST TO BE INCLUDED IN EARTH EXCAVATION)
- ⑥ NOTE: FLEXIBLE PAVEMENT (AGGREGATE SURFACE OR BITUMINOUS SURFACE OVER FLEXIBLE BASE) TREATMENT REMOVAL AS PER ARTICLE 205.03 (COST TO BE INCLUDED IN EARTH EXCAVATION)
- ✕ TREE REMOVAL

NOTE: SEE STATUS OF UTILITIES TO BE ADJUSTED FOR FURTHER INFORMATION ON UTILITY CONFLICTS.



REVISIONS	
NAME	DATE

ILLINOIS DEPARTMENT OF TRANSPORTATION

**REMOVAL ITEMS
IL. ROUTE 336
STA. 187+00 TO STA. 209+00**

DATE 3/30/06 DRAWN BY
CHECKED BY