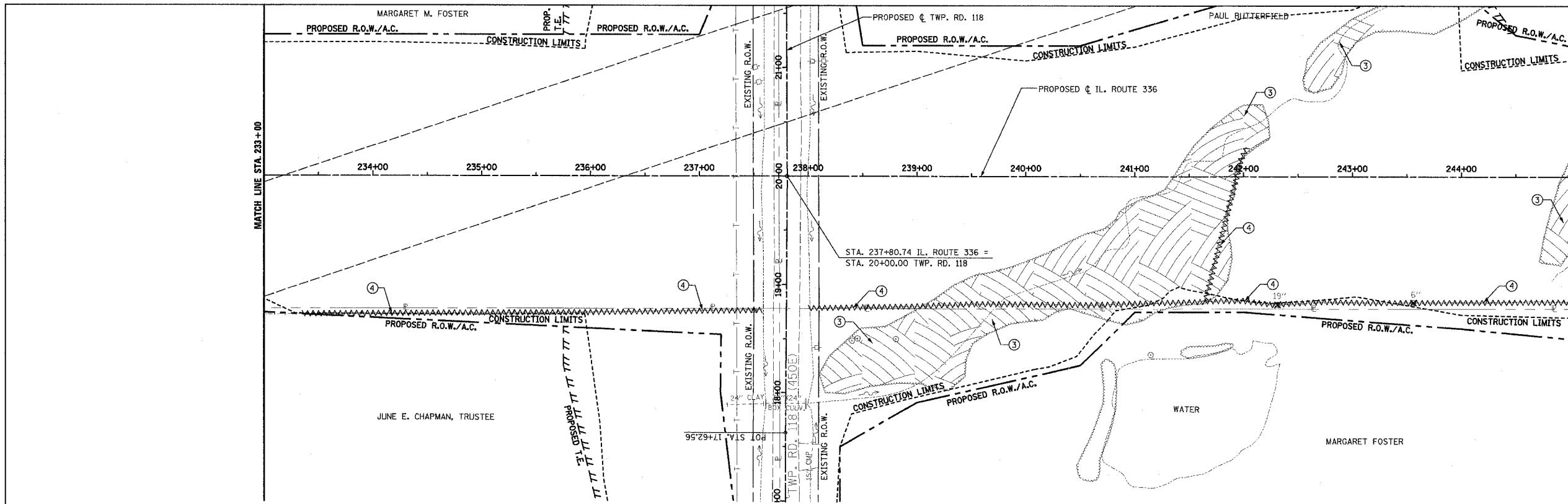
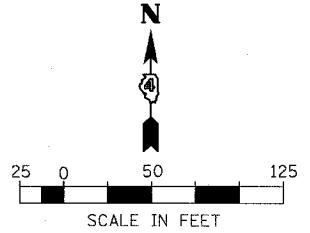
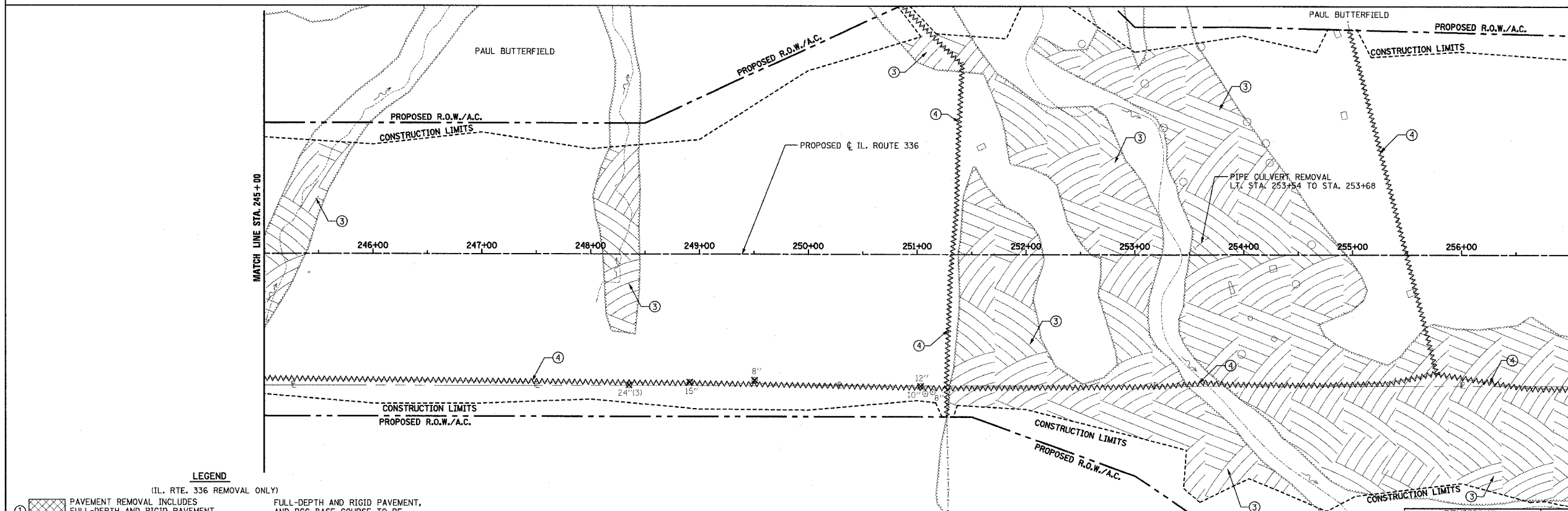


F.A.P. RTE.	SECTION	COUNTY	TOTAL SHEETS	SHEET NO.
315	55-2	McDONOUGH	1025	100
STA. 233+00		TO STA. 257+00		
FED. ROAD DIST. NO. 4 ILLINOIS FED. AID PROJECT				

- ③ TREE REMOVAL, ACRES
RT. STA. 238+10 TO RT. STA. 242+25
LT. STA. 242+50 TO LT. STA. 243+40
RT. STA. 244+75 TO LT. & RT. STA. 245+00
- ④ FENCE REMOVAL
RT. STA. 233+30 TO RT. STA. 237+58
RT. STA. 238+00 TO RT. STA. 245+00
RT. STA. 241+65 TO LT. STA. 242+03



- ③ TREE REMOVAL, ACRES
LT. & RT. STA. 245+00 TO LT. STA. 245+85
LT. STA. 248+00 TO STA. 248+45
LT. STA. 250+80 TO RT. STA. 254+50
LT. STA. 252+00 TO RT. STA. 257+00
- ④ FENCE REMOVAL
RT. STA. 245+00 TO RT. STA. 257+00
LT. STA. 250+86 TO RT. STA. 251+27
LT. STA. 255+00 TO RT. STA. 255+75



- LEGEND**
(IL. RTE. 336 REMOVAL ONLY)
- ① [Symbol] PAVEMENT REMOVAL INCLUDES FULL-DEPTH AND RIGID PAVEMENT, AND PCC BASE COURSE
 - ② [Symbol] BITUMINOUS SURFACE REMOVAL - VARIABLE DEPTH
 - ③ [Symbol] TREE REMOVAL, ACRES
 - ④ [Symbol] FENCE REMOVAL
 - ⑤ [Symbol] FULL-DEPTH AND RIGID PAVEMENT, AND PCC BASE COURSE TO BE BROKEN UP AND LEFT IN PLACE AS PER ARTICLE 205.03 (COST TO BE INCLUDED IN EARTH EXCAVATION)
 - ⑥ [Symbol] TREE REMOVAL
 - ⑦ [Symbol] NOTE: FLEXIBLE PAVEMENT (AGGREGATE SURFACE OR BITUMINOUS SURFACE OVER FLEXIBLE BASE) TREATMENT REMOVAL AS PER ARTICLE 205.03 (COST TO BE INCLUDED IN EARTH EXCAVATION)

NOTE: SEE STATUS OF UTILITIES TO BE ADJUSTED FOR FURTHER INFORMATION ON UTILITY CONFLICTS.

REVISIONS	
NAME	DATE

ILLINOIS DEPARTMENT OF TRANSPORTATION
REMOVAL ITEMS
IL. ROUTE 336
STA. 233+00 TO STA. 257+00

DRAWN BY
CHECKED BY

DATE 3/30/06