

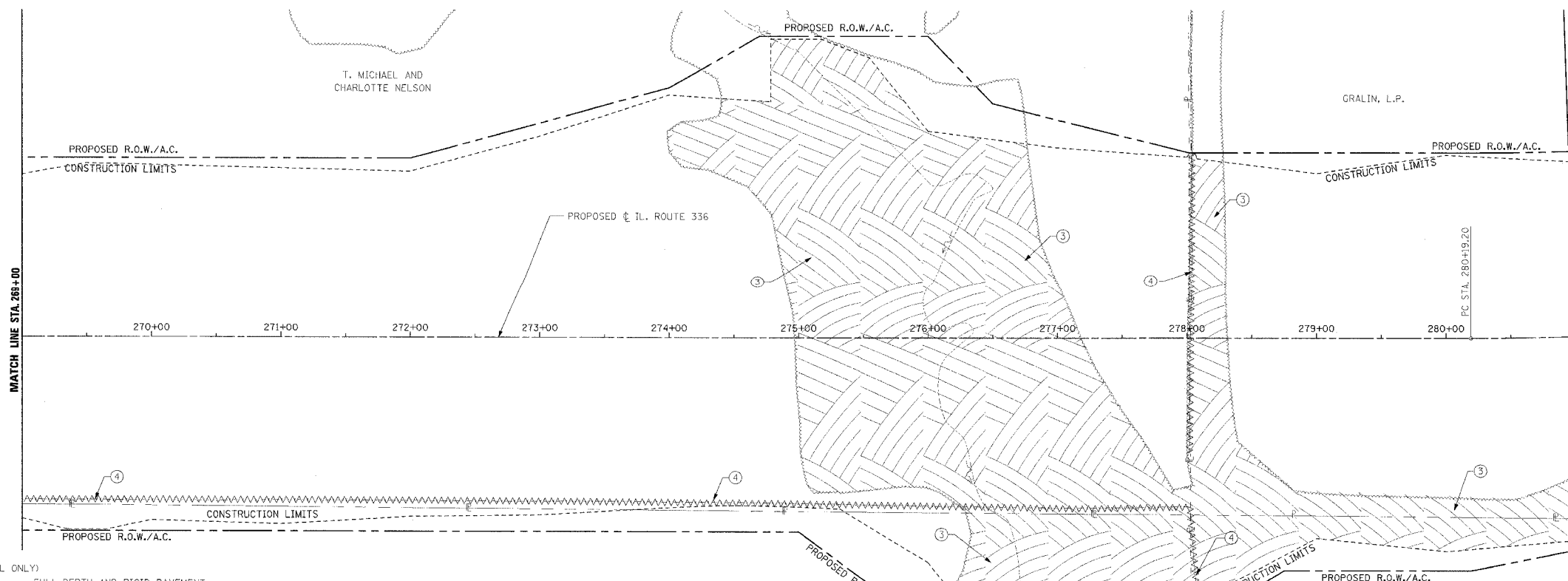
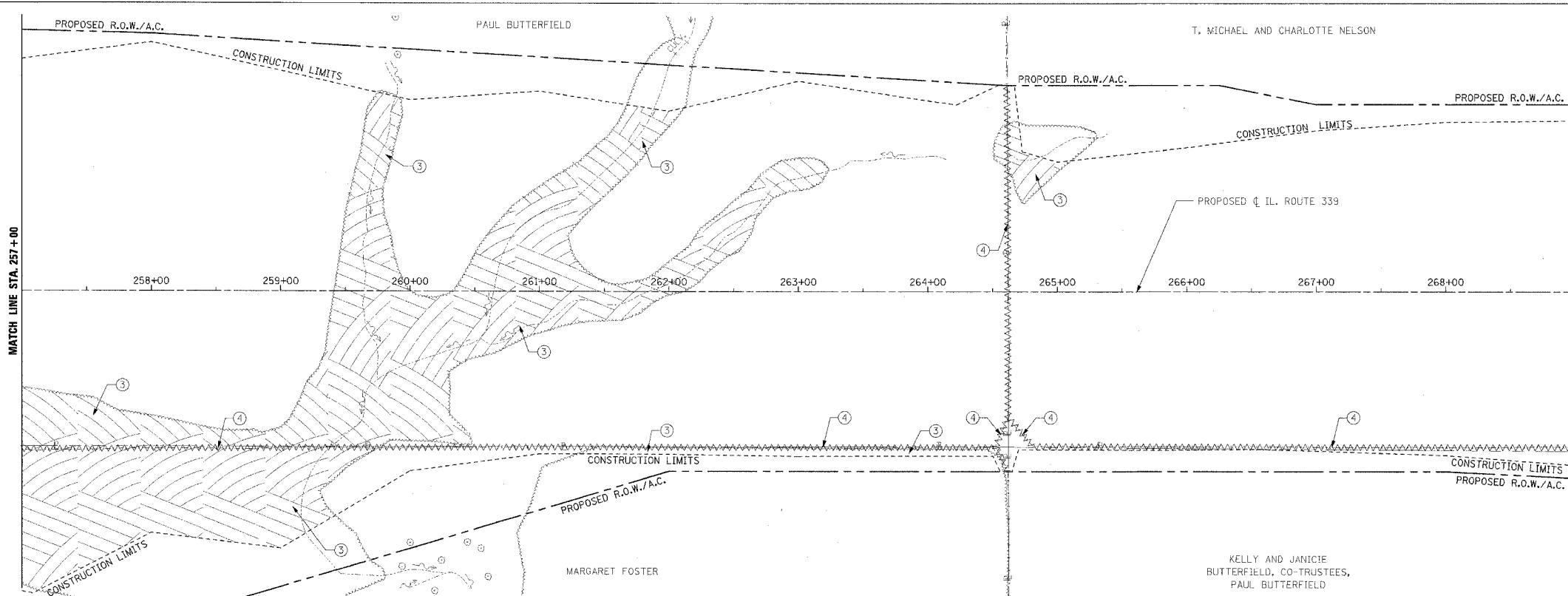
F.A.P. RTE.	SECTION	COUNTY	TOTAL SHEETS	SHEET NO.
315	55-2	McDONOUGH	1025	101
STA. 257+00		TO STA. 281+00		
FED. ROAD DIST. NO. 4 ILLINOIS FED. AID PROJECT				

③ TREE REMOVAL (ACRES)
 RT. STA. 257+00 TO LT. STA. 263+25
 RT. STA. 261+30 TO RT. STA. 264+60
 LT. STA. 264+50 TO LT. STA. 265+30

④ FENCE REMOVAL
 RT. STA. 257+00 TO RT. STA. 264+61
 LT. STA. 264+61 TO RT. STA. 269+00

③ TREE REMOVAL, ACRES
 LT. STA. 274+00 TO RT. STA. 281+00

④ FENCE REMOVAL
 RT. STA. 268+00 TO RT. STA. 278+10
 RT. STA. 278+01 TO LT. STA. 278+03

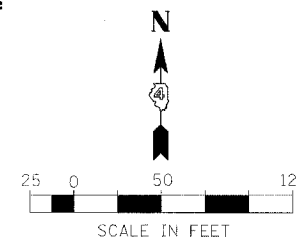


LEGEND

(IL. RTE. 336 REMOVAL ONLY)

- ① [Hatched pattern] PAVEMENT REMOVAL INCLUDES FULL-DEPTH AND RIGID PAVEMENT, AND PCC BASE COURSE
- ② [Hatched pattern] BITUMINOUS SURFACE REMOVAL - VARIABLE DEPTH
- ③ [Hatched pattern] TREE REMOVAL, ACRES
- ④ [Wavy line] FENCE REMOVAL
- ⑤ [Hatched pattern] FULL-DEPTH AND RIGID PAVEMENT, AND PCC BASE COURSE TO BE BROKEN UP AND LEFT IN PLACE AS PER ARTICLE 205.03 (COST TO BE INCLUDED IN EARTH EXCAVATION)
- [Cross-hatched pattern] TREE REMOVAL
- ⑥ NOTE: FLEXIBLE PAVEMENT (AGGREGATE SURFACE OR BITUMINOUS SURFACE OVER FLEXIBLE BASE) TREATMENT REMOVAL AS PER ARTICLE 205.03 (COST TO BE INCLUDED IN EARTH EXCAVATION)

NOTE: SEE STATUS OF UTILITIES TO BE ADJUSTED FOR FURTHER INFORMATION ON UTILITY CONFLICTS.



REVISIONS	
NAME	DATE

ILLINOIS DEPARTMENT OF TRANSPORTATION

**REMOVAL ITEMS
 IL. ROUTE 336
 STA. 257+00 TO STA. 281+00**

DATE 3/30/06

DRAWN BY
 CHECKED BY