

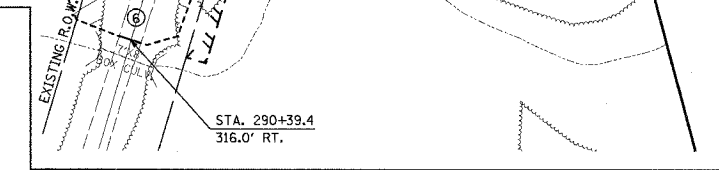
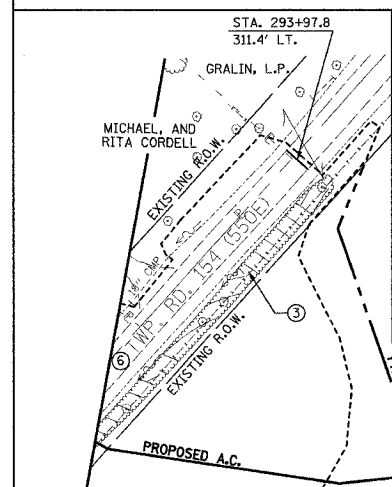
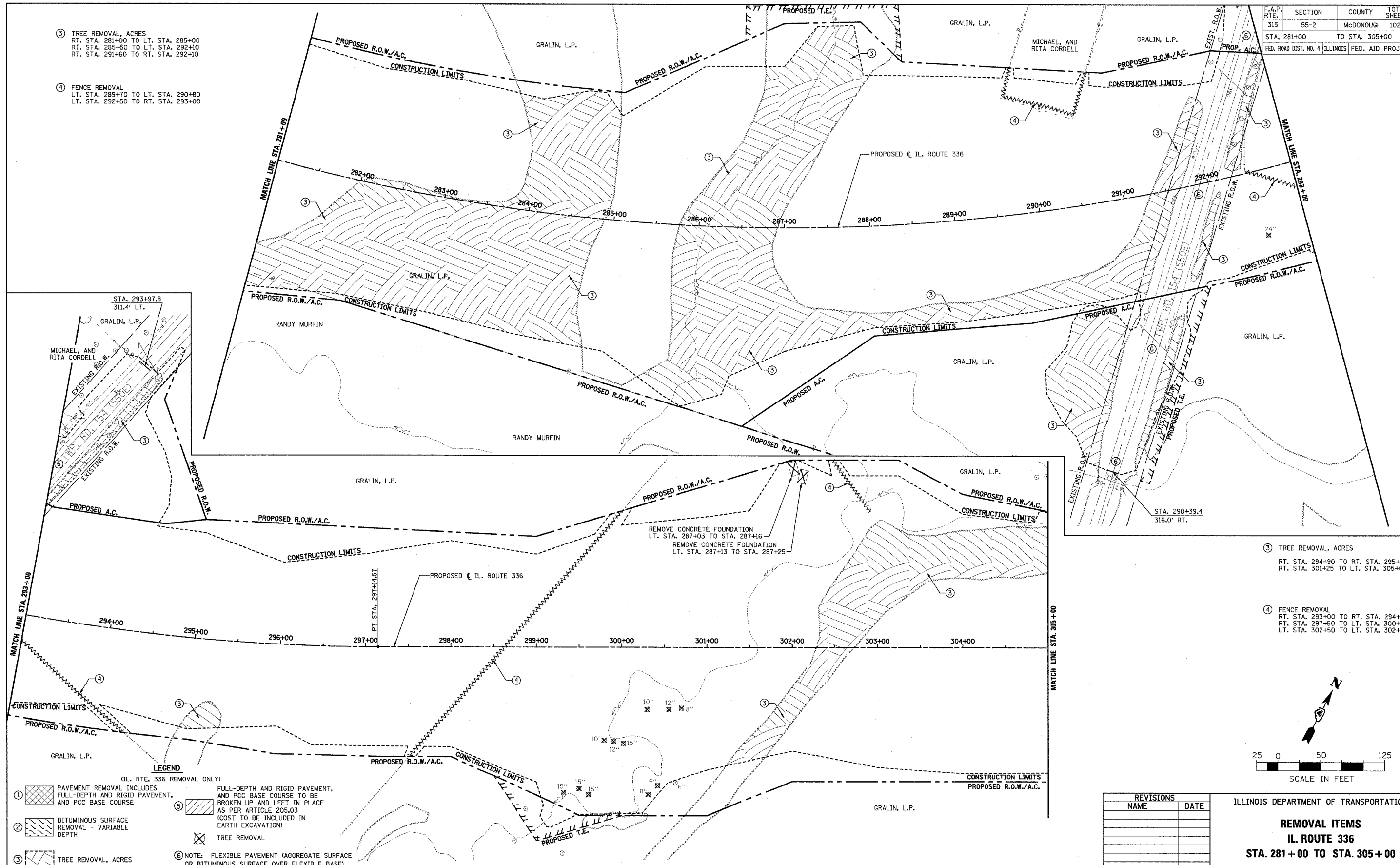
F.A.P. RTE.	SECTION	COUNTY	TOTAL SHEETS	SHEET NO.
315	55-2	McDONOUGH	1025	102
STA. 281+00		TO STA. 305+00		
FED. ROAD DIST. NO. 4 ILLINOIS FED. AID PROJECT				

③ TREE REMOVAL, ACRES
RT. STA. 281+00 TO LT. STA. 285+00
RT. STA. 285+50 TO LT. STA. 292+10
RT. STA. 291+60 TO RT. STA. 292+10

④ FENCE REMOVAL
LT. STA. 289+70 TO LT. STA. 290+80
LT. STA. 292+50 TO RT. STA. 293+00

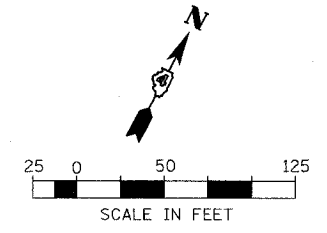
③ TREE REMOVAL, ACRES
RT. STA. 294+90 TO RT. STA. 295+40
RT. STA. 301+25 TO LT. STA. 305+00

④ FENCE REMOVAL
RT. STA. 293+00 TO RT. STA. 294+30
RT. STA. 297+50 TO LT. STA. 300+00
LT. STA. 302+50 TO LT. STA. 302+90



- LEGEND**
(IL. RTE. 336 REMOVAL ONLY)
- ① [Hatched pattern] PAVEMENT REMOVAL INCLUDES FULL-DEPTH AND RIGID PAVEMENT, AND PCC BASE COURSE
 - ② [Hatched pattern] BITUMINOUS SURFACE REMOVAL - VARIABLE DEPTH
 - ③ [Hatched pattern] TREE REMOVAL, ACRES
 - ④ [Wavy line pattern] FENCE REMOVAL
 - ⑤ [Hatched pattern] FULL-DEPTH AND RIGID PAVEMENT, AND PCC BASE COURSE TO BE BROKEN UP AND LEFT IN PLACE AS PER ARTICLE 205.03 (COST TO BE INCLUDED IN EARTH EXCAVATION)
 - ⑥ [Note symbol] NOTE: FLEXIBLE PAVEMENT (AGGREGATE SURFACE OR BITUMINOUS SURFACE OVER FLEXIBLE BASE) TREATMENT REMOVAL AS PER ARTICLE 205.03 (COST TO BE INCLUDED IN EARTH EXCAVATION)
 - [X symbol] TREE REMOVAL

NOTE: SEE STATUS OF UTILITIES TO BE ADJUSTED FOR FURTHER INFORMATION ON UTILITY CONFLICTS.



REVISIONS	
NAME	DATE

ILLINOIS DEPARTMENT OF TRANSPORTATION
REMOVAL ITEMS
IL. ROUTE 336
STA. 281+00 TO STA. 305+00
DATE 3/30/06
DRAWN BY
CHECKED BY