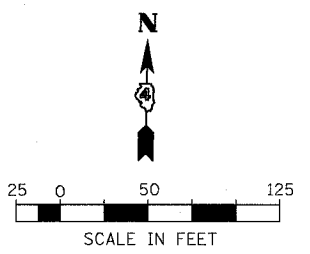
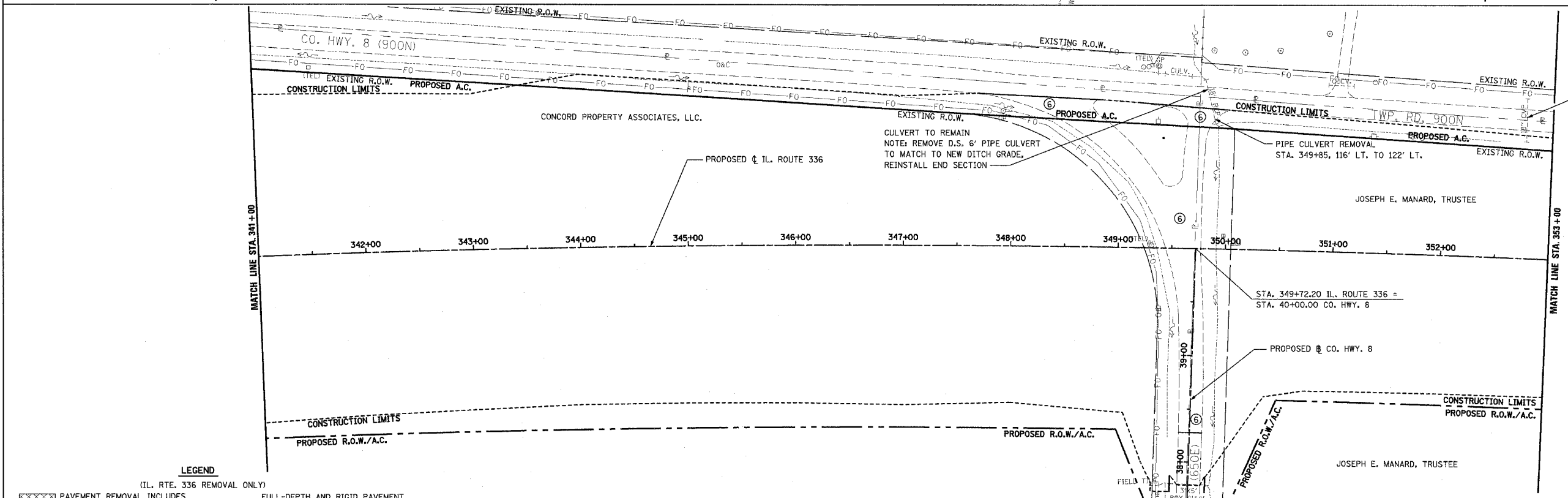
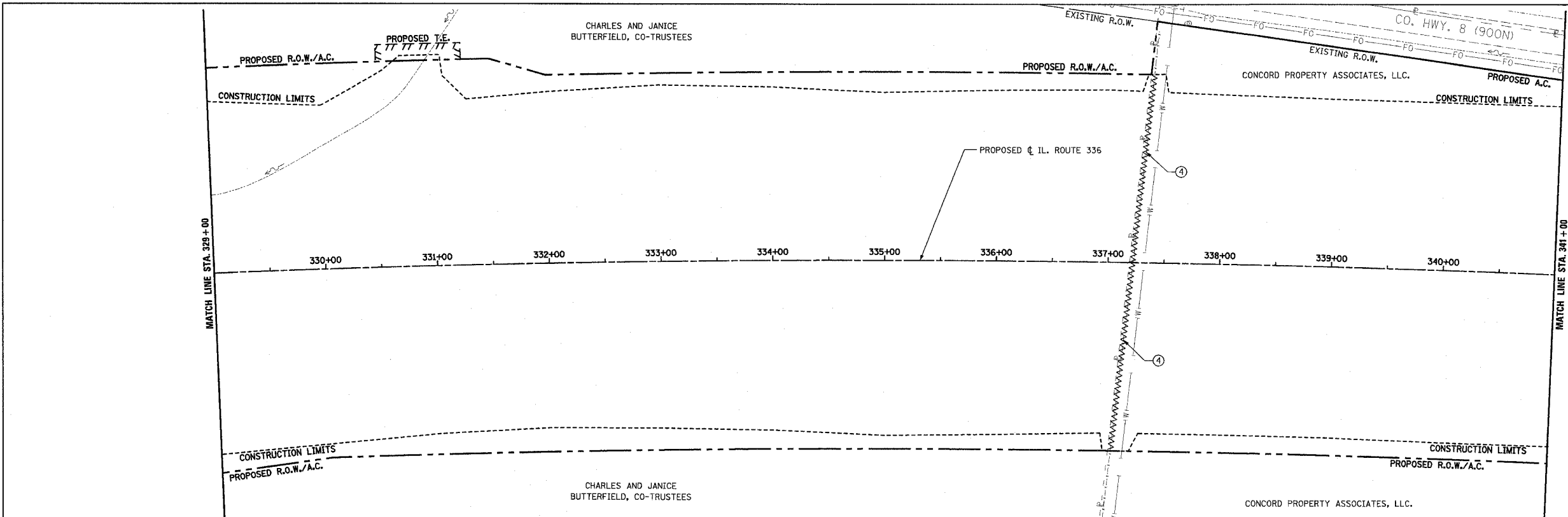


F.A.P. RTE.	SECTION	COUNTY	TOTAL SHEETS	SHEET NO.
315	55-2	McDONOUGH	1025	104
STA. 329+00		TO STA. 353+00		
FED. ROAD DIST. NO. 4 ILLINOIS FED. AID PROJECT				

④ FENCE REMOVAL
RT. STA. 337+04 TO LT. STA. 337+39



- LEGEND**
(IL. RTE. 336 REMOVAL ONLY)
- ① [Cross-hatch pattern] PAVEMENT REMOVAL INCLUDES FULL-DEPTH AND RIGID PAVEMENT, AND PCC BASE COURSE
 - ② [Diagonal lines] BITUMINOUS SURFACE REMOVAL - VARIABLE DEPTH
 - ③ [Stippled pattern] TREE REMOVAL, ACRES
 - ④ [Wavy line] FENCE REMOVAL
 - ⑤ [Diagonal lines] FULL-DEPTH AND RIGID PAVEMENT, AND PCC BASE COURSE TO BE BROKEN UP AND LEFT IN PLACE AS PER ARTICLE 205.03 (COST TO BE INCLUDED IN EARTH EXCAVATION)
 - ⊗ TREE REMOVAL
 - ⑥ NOTE: FLEXIBLE PAVEMENT (AGGREGATE SURFACE OR BITUMINOUS SURFACE OVER FLEXIBLE BASE) TREATMENT REMOVAL AS PER ARTICLE 205.03 (COST TO BE INCLUDED IN EARTH EXCAVATION)

NOTE: SEE STATUS OF UTILITIES TO BE ADJUSTED FOR FURTHER INFORMATION ON UTILITY CONFLICTS.

REVISIONS	
NAME	DATE

ILLINOIS DEPARTMENT OF TRANSPORTATION
REMOVAL ITEMS
IL. ROUTE 336
STA. 329 + 00 TO STA. 353 + 00
DATE 3/30/06
DRAWN BY
CHECKED BY