

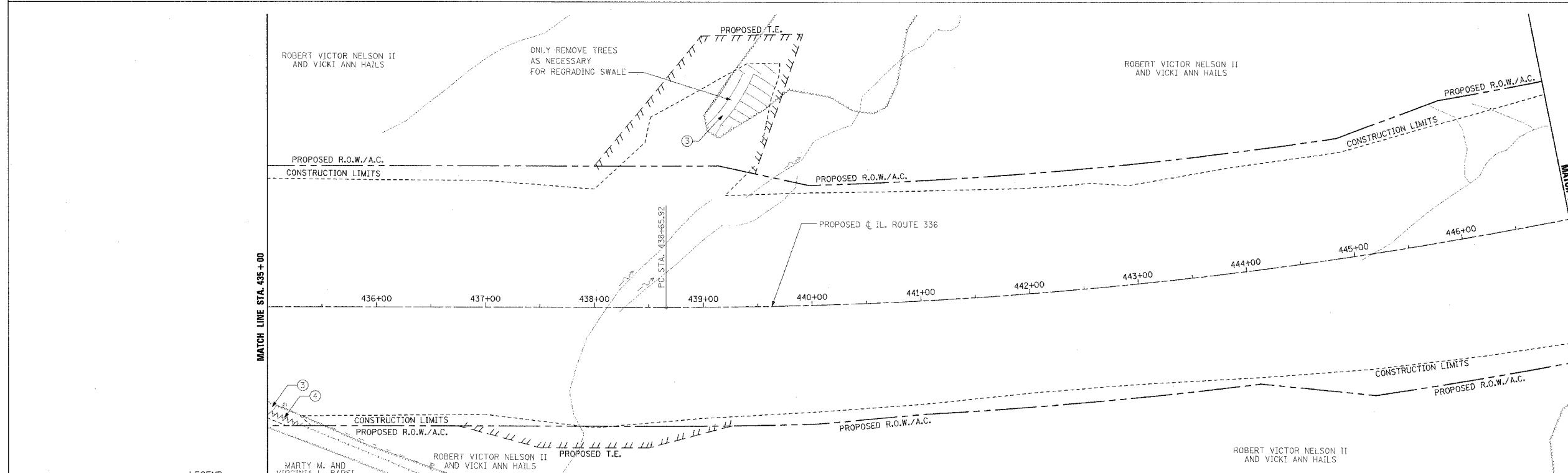
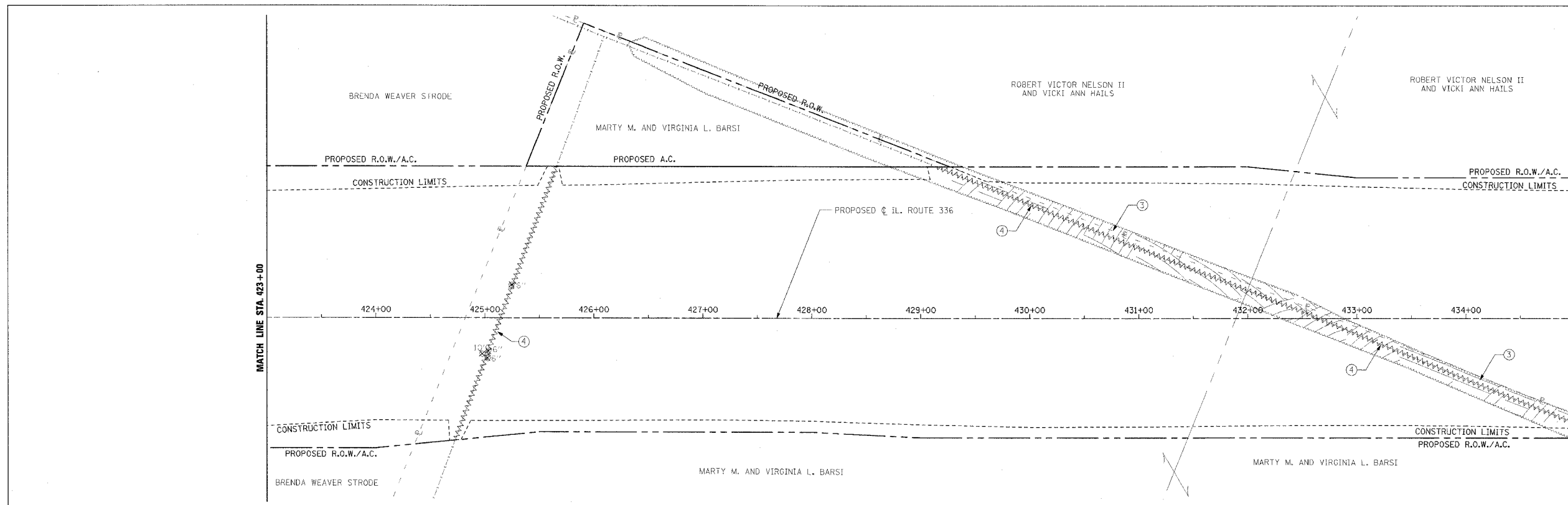
F.A.P. RTE.	SECTION	COUNTY	TOTAL SHEETS	SHEET NO.
315	55-2	MCDONOUGH	1025	108
STA. 423+00		TO STA. 447+00		
FED. ROAD DIST. NO. 4 ILLINOIS FED. AID PROJECT				

③ TREE REMOVAL, ACRES
LT. STA. 429+05 TO STA. RT. STA. 435+00

④ FENCE REMOVAL
RT. STA. 424+72 TO LT. STA. 425+66
LT. STA. 429+14 TO RT. STA. 435+00

③ TREE REMOVAL, ACRES
RT. STA. 435+00 TO RT. STA. 435+40
LT. STA. 439+00 TO LT. STA. 439+75

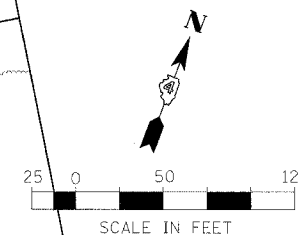
④ FENCE REMOVAL
RT. STA. 435+00 TO RT. STA. 435+30



LEGEND

- ① PAVEMENT REMOVAL INCLUDES FULL-DEPTH AND RIGID PAVEMENT, AND PCC BASE COURSE
- ② BITUMINOUS SURFACE REMOVAL - VARIABLE DEPTH
- ③ TREE REMOVAL, ACRES
- ④ FENCE REMOVAL
- ⑤ FULL-DEPTH AND RIGID PAVEMENT, AND PCC BASE COURSE TO BE BROKEN UP AND LEFT IN PLACE AS PER ARTICLE 205.03 (COST TO BE INCLUDED IN EARTH EXCAVATION)
- ⑥ NOTE: FLEXIBLE PAVEMENT (AGGREGATE SURFACE OR BITUMINOUS SURFACE OVER FLEXIBLE BASE) TREATMENT REMOVAL AS PER ARTICLE 205.03 (COST TO BE INCLUDED IN EARTH EXCAVATION)

NOTE: SEE STATUS OF UTILITIES TO BE ADJUSTED FOR FURTHER INFORMATION ON UTILITY CONFLICTS.



REVISIONS	
NAME	DATE

ILLINOIS DEPARTMENT OF TRANSPORTATION
REMOVAL ITEMS
IL. ROUTE 336
STA. 423+00 TO STA. 447+00
DATE 3/30/06
DRAWN BY
CHECKED BY