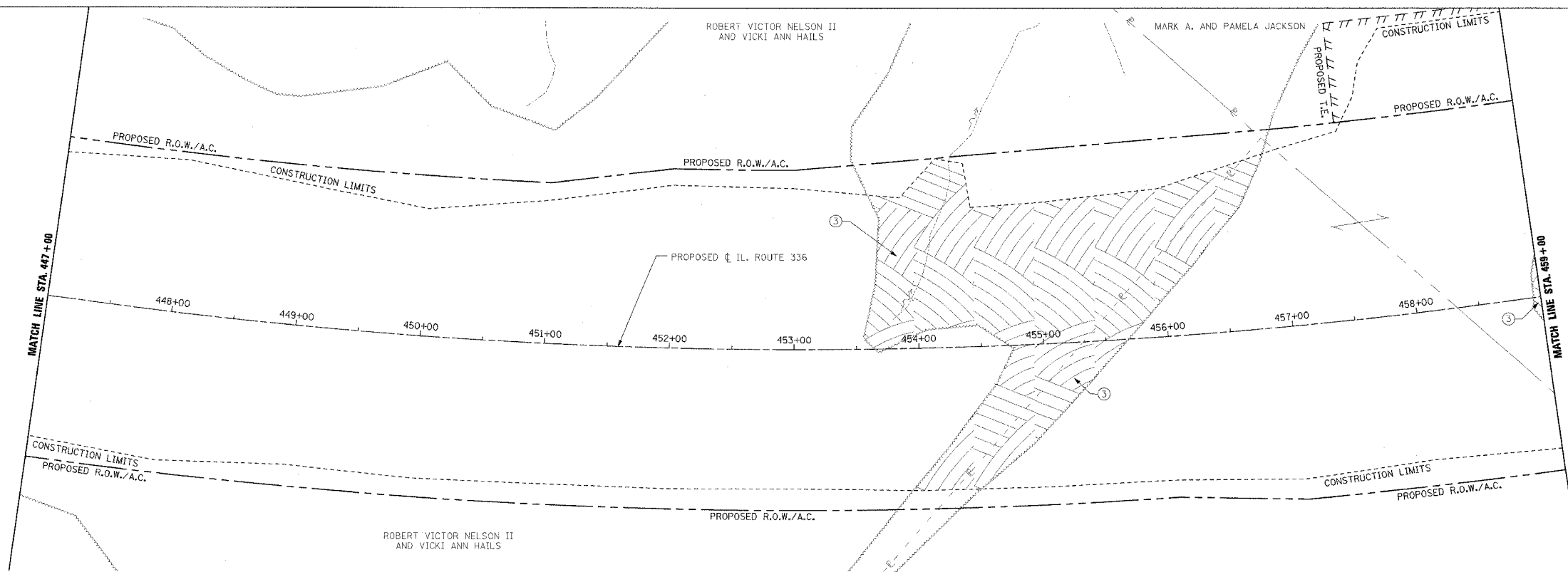


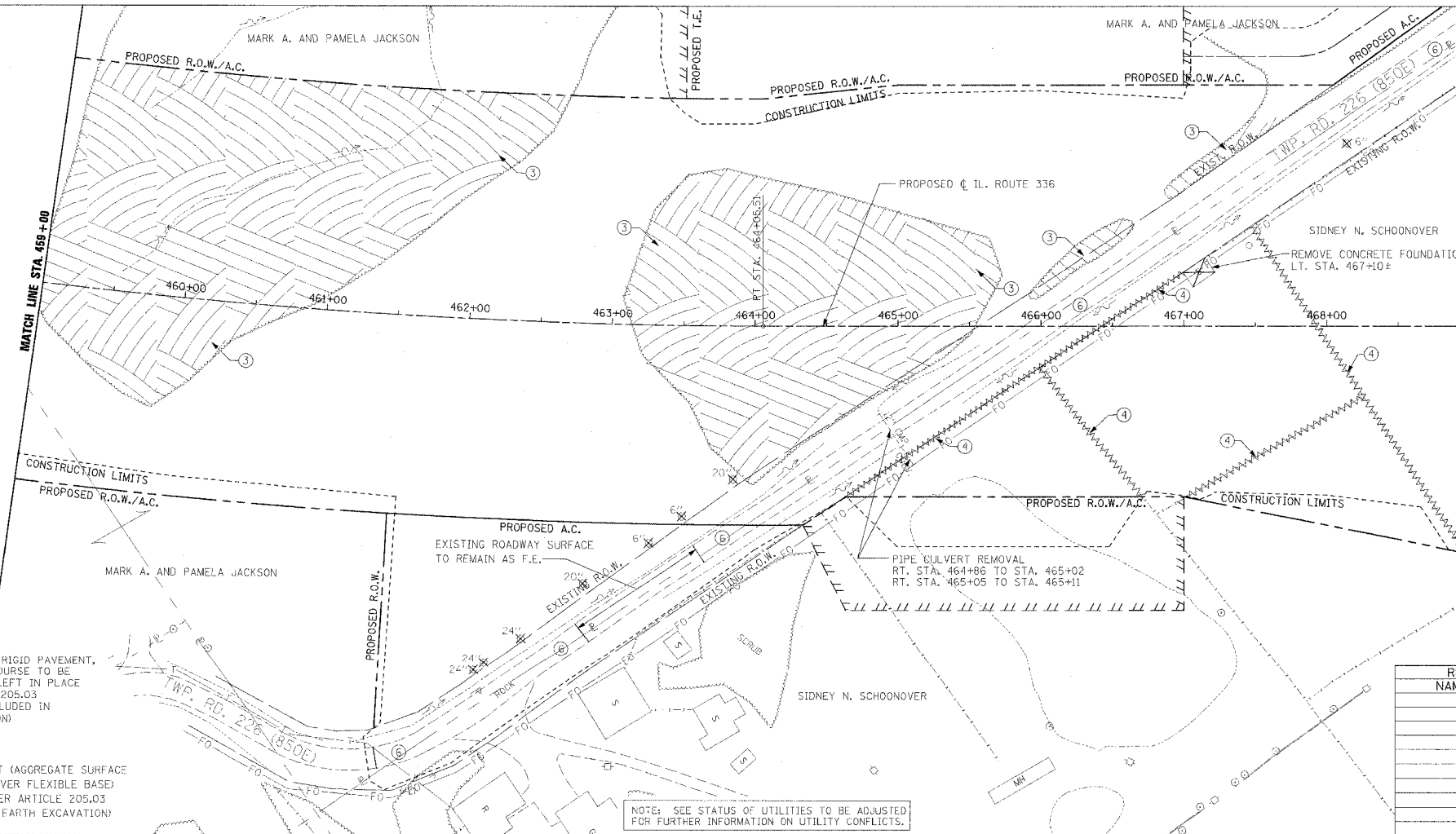
F.A.P. RTE.	SECTION	COUNTY	TOTAL SHEETS	SHEET NO.
315	55-2	MCDONOUGH	1025	109
STA. 447+00		TO STA. 469+00		
FED. ROAD DIST. NO. 4		ILLINOIS FED. AID PROJECT		

③ TREE REMOVAL, ACRES
 LT. STA. 453+55 TO LT. STA. 456+85
 LT. & RT. 458+94 TO LT. & RT. STA. 459+00



③ TREE REMOVAL, ACRES
 LT. & RT. STA. 459+00 TO LT. STA. 462+65
 LT. STA. 463+10 TO LT. STA. 465+70
 LT. STA. 465+90 TO LT. STA. 466+60
 LT. STA. 466+85 TO LT. STA. 467+10

④ FENCE REMOVAL
 RT. STA. 464+65 TO LT. STA. 467+00
 RT. STA. 466+00 TO RT. STA. 466+75
 RT. STA. 467+00 TO RT. STA. 468+25
 LT. STA. 467+50 TO RT. STA. 468+95

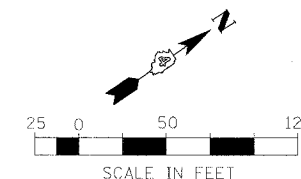


LEGEND

(IL. RTE. 336 REMOVAL ONLY)

- ① [Hatched Box] PAVEMENT REMOVAL INCLUDES FULL-DEPTH AND RIGID PAVEMENT, AND PCC BASE COURSE
- ② [Hatched Box] BITUMINOUS SURFACE REMOVAL - VARIABLE DEPTH
- ③ [Hatched Box] TREE REMOVAL, ACRES
- ④ [Wavy Line] FENCE REMOVAL
- ⑤ [Hatched Box] FULL-DEPTH AND RIGID PAVEMENT, AND PCC BASE COURSE TO BE BROKEN UP AND LEFT IN PLACE AS PER ARTICLE 205.03 (COST TO BE INCLUDED IN EARTH EXCAVATION)
- ⑥ [Hatched Box] NOTE: FLEXIBLE PAVEMENT (AGGREGATE SURFACE OR BITUMINOUS SURFACE OVER FLEXIBLE BASE) TREATMENT REMOVAL AS PER ARTICLE 205.03 (COST TO BE INCLUDED IN EARTH EXCAVATION)
- [Crossed Box] TREE REMOVAL

NOTE: SEE STATUS OF UTILITIES TO BE ADJUSTED FOR FURTHER INFORMATION ON UTILITY CONFLICTS.



REVISIONS	
NAME	DATE

ILLINOIS DEPARTMENT OF TRANSPORTATION

**REMOVAL ITEMS
 IL ROUTE 336
 STA. 447+00 TO STA. 469+00**

DATE 3/30/06

DRAWN BY
 CHECKED BY