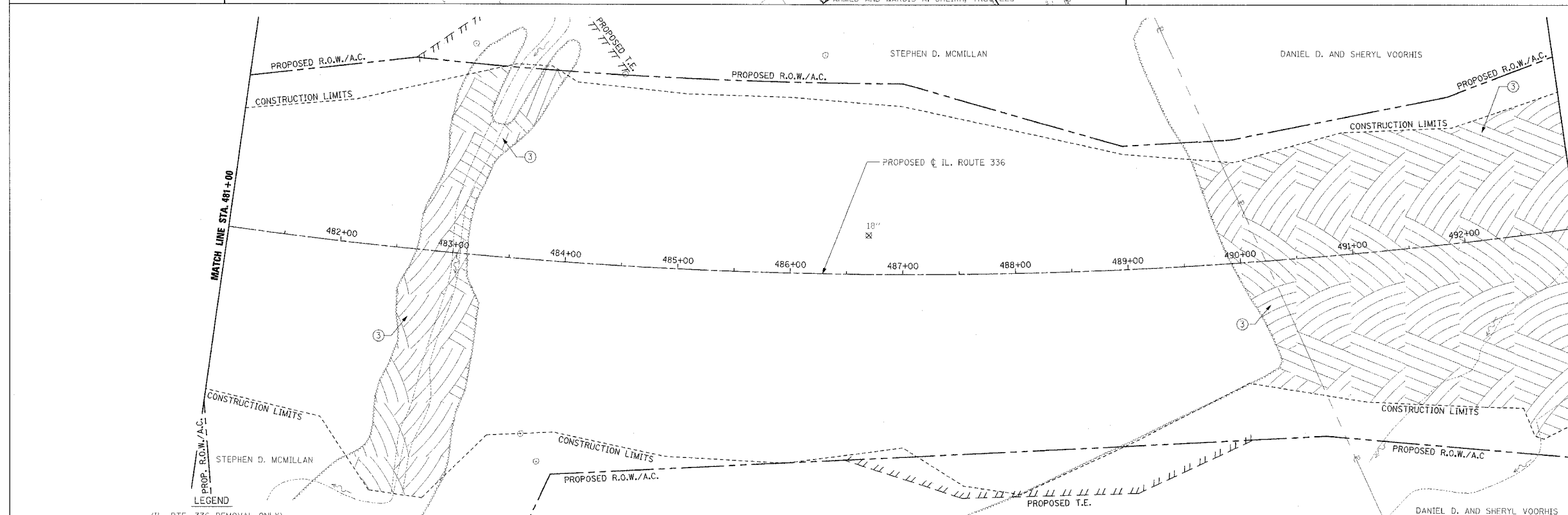
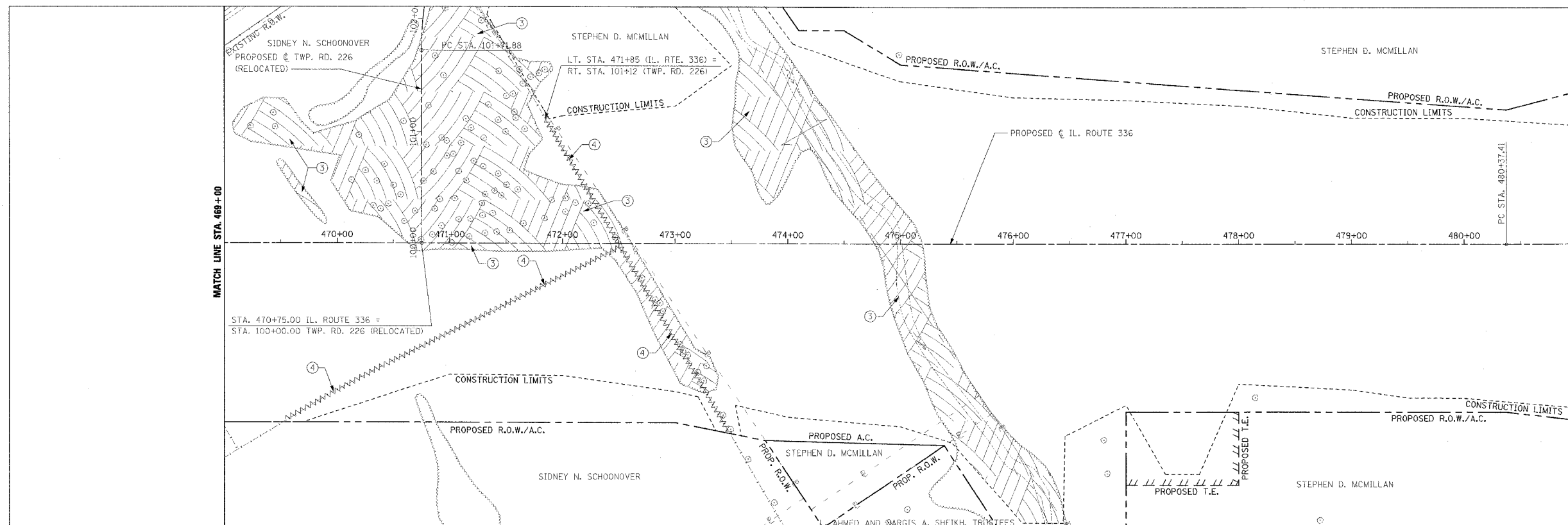


F.A.P. RTE.	SECTION	COUNTY	TOTAL SHEETS	SHEET NO.
315	55-2	MCDONOUGH	1025	110
STA. 469+00		TO STA. 493+00		
FED. ROAD DIST. NO. 4 ILLINOIS FED. AID PROJECT				

③ TREE REMOVAL, ACRES
 LT. STA. 469+08 TO RT. STA. 473+37
 LT. STA. 469+50 TO LT. STA. 469+90
 LT. STA. 473+50 TO RT. STA. 476+44

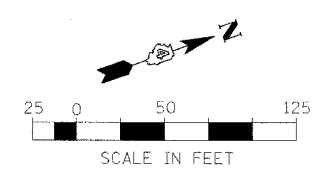
④ FENCE REMOVAL
 RT. STA. 469+52 TO RT. STA. 472+51
 LT. STA. 471+85 TO RT. STA. 473+49

③ TREE REMOVAL, ACRES
 RT. STA. 482+25 TO LT. STA. 483+90
 LT. STA. 489+60 TO LT. & RT. STA. 493+00



- LEGEND
- (IL. RTE. 336 REMOVAL ONLY)
- ① PAVEMENT REMOVAL INCLUDES FULL-DEPTH AND RIGID PAVEMENT, AND PCC BASE COURSE
 - ② BITUMINOUS SURFACE REMOVAL - VARIABLE DEPTH
 - ③ TREE REMOVAL, ACRES
 - ④ FENCE REMOVAL
 - ⑤ FULL-DEPTH AND RIGID PAVEMENT, AND PCC BASE COURSE TO BE BROKEN UP AND LEFT IN PLACE AS PER ARTICLE 205.03 (COST TO BE INCLUDED IN EARTH EXCAVATION)
 - ⑥ NOTE: FLEXIBLE PAVEMENT (AGGREGATE SURFACE OR BITUMINOUS SURFACE OVER FLEXIBLE BASE) TREATMENT REMOVAL AS PER ARTICLE 205.03 (COST TO BE INCLUDED IN EARTH EXCAVATION)
 - ⊗ TREE REMOVAL

NOTE: SEE STATUS OF UTILITIES TO BE ADJUSTED FOR FURTHER INFORMATION ON UTILITY CONFLICTS.



REVISIONS	
NAME	DATE

ILLINOIS DEPARTMENT OF TRANSPORTATION

**REMOVAL ITEMS
 IL ROUTE 336
 STA. 469+00 TO STA. 493+00**

DATE 3/30/06

DRAWN BY _____
 CHECKED BY _____