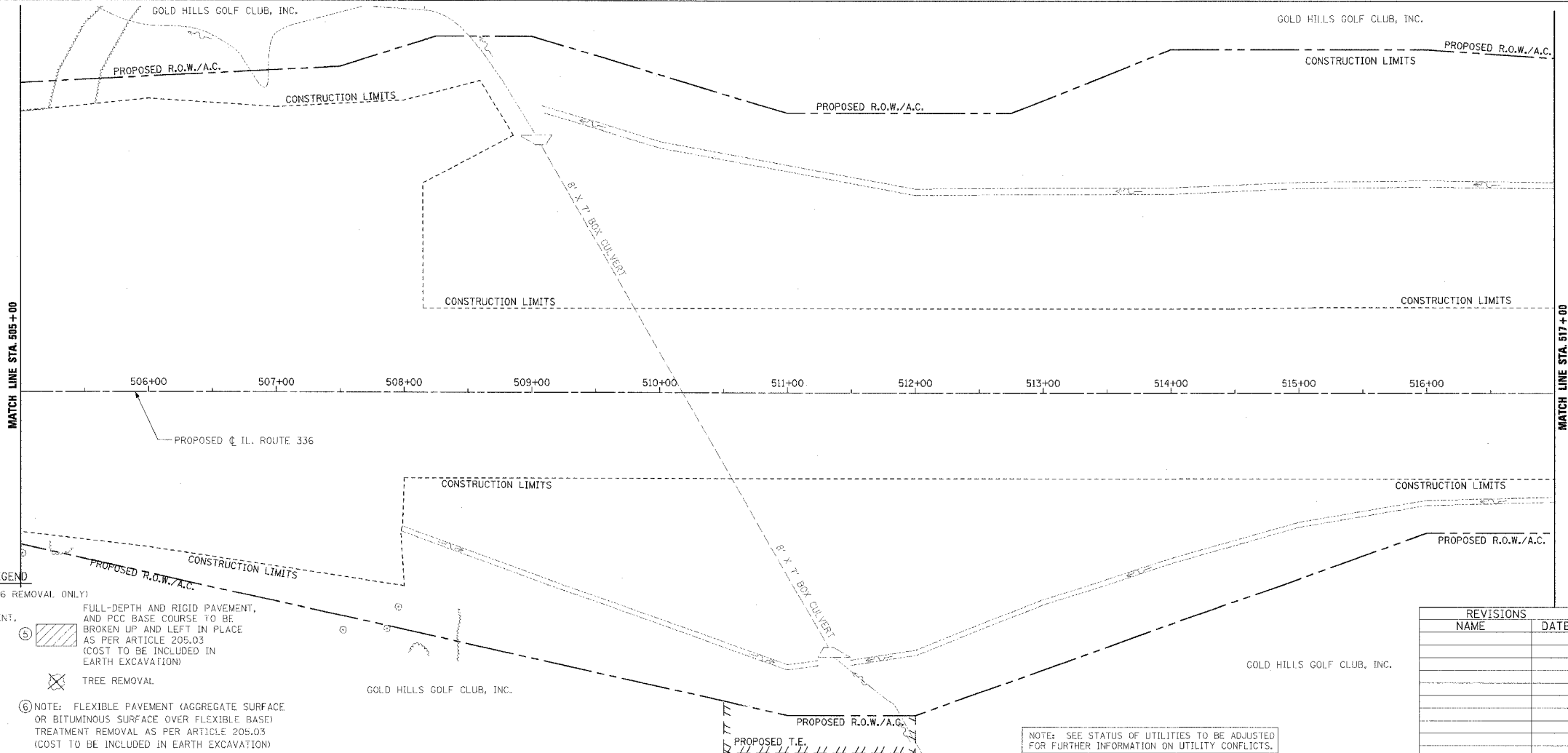
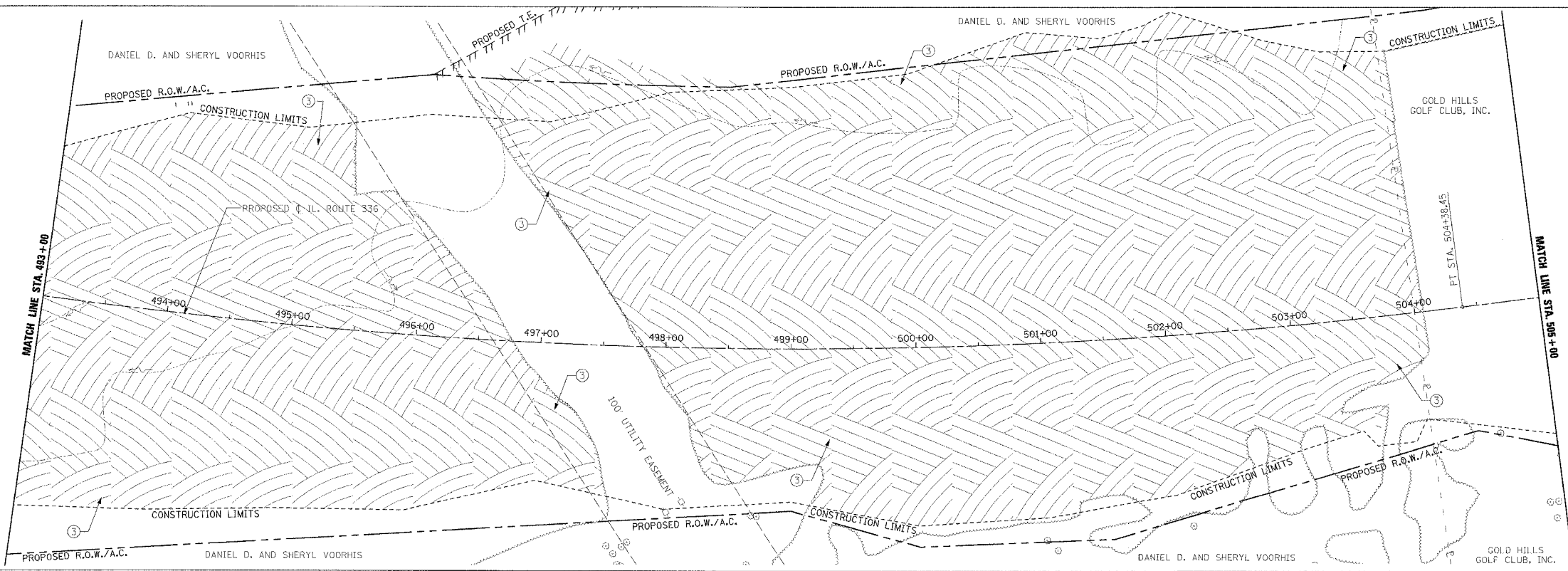


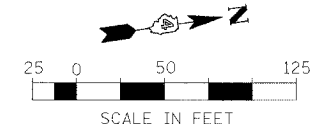
F.A.P. RITE	SECTION	COUNTY	TOTAL SHEETS	SHEET NO.
315	55-2	McDONOUGH	1025	111
STA. 493+00		TO STA. 517+00		
FED. ROAD DIST. NO. 4 ILLINOIS FED. AID PROJECT				

③ TREE REMOVAL, ACRES
 LT. & RT. STA. 493+00 TO RT. STA. 497+55
 LT. STA. 469+35 TO LT. & RT. STA. 504+00



- LEGEND**
 (IL. RTE. 336 REMOVAL ONLY)
- ① PAVEMENT REMOVAL INCLUDES FULL-DEPTH AND RIGID PAVEMENT, AND PCC BASE COURSE
 - ② BITUMINOUS SURFACE REMOVAL - VARIABLE DEPTH
 - ③ TREE REMOVAL, ACRES
 - ④ FENCE REMOVAL
 - ⑤ FULL-DEPTH AND RIGID PAVEMENT, AND PCC BASE COURSE TO BE BROKEN UP AND LEFT IN PLACE AS PER ARTICLE 205.03 (COST TO BE INCLUDED IN EARTH EXCAVATION)
 - ⑥ NOTE: FLEXIBLE PAVEMENT (AGGREGATE SURFACE OR BITUMINOUS SURFACE OVER FLEXIBLE BASE) TREATMENT REMOVAL AS PER ARTICLE 205.03 (COST TO BE INCLUDED IN EARTH EXCAVATION)
 - ⊗ TREE REMOVAL

NOTE: SEE STATUS OF UTILITIES TO BE ADJUSTED FOR FURTHER INFORMATION ON UTILITY CONFLICTS.



REVISIONS	
NAME	DATE

ILLINOIS DEPARTMENT OF TRANSPORTATION
REMOVAL ITEMS
IL. ROUTE 336
STA. 493+00 TO STA. 517+00
 DRAWN BY
 CHECKED BY
 DATE 3/30/06