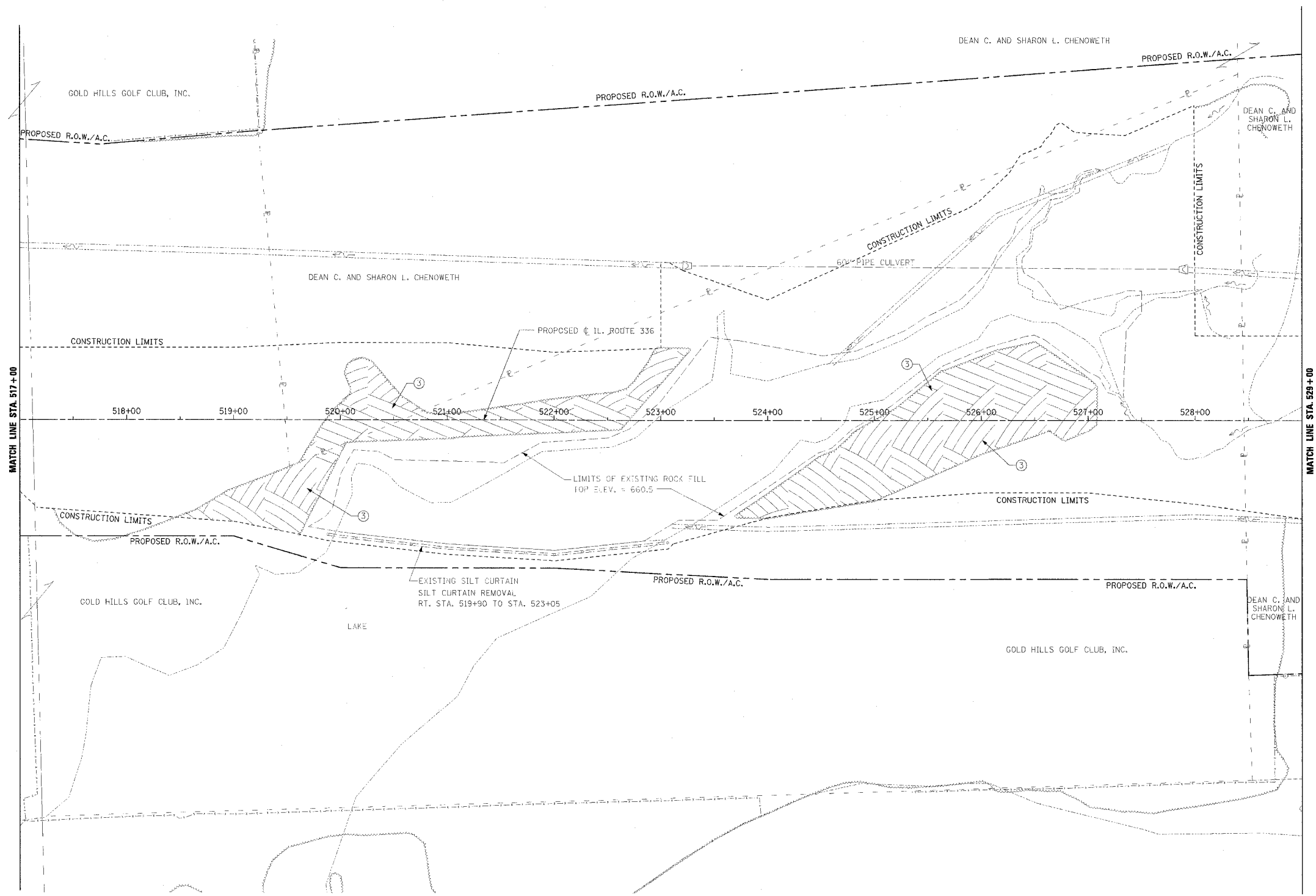
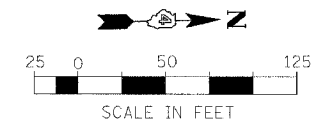


F.A.P. RTE.	SECTION	COUNTY	TOTAL SHEETS	SHEET NO.
315	55-2	MCDONOUGH	1025	112
STA. 517+00		TO STA. 529+00		
FED. ROAD DIST. NO. 4 ILLINOIS FED. AID PROJECT				



③ TREE REMOVAL, ACRES  
RT. STA. 518+45 TO LT. STA. 523+27  
RT. STA. 523+69 TO LT. STA. 527+07

- LEGEND**  
(IL. RTE. 336 REMOVAL ONLY)
- ① [Hatched Box] PAVEMENT REMOVAL INCLUDES FULL-DEPTH AND RIGID PAVEMENT, AND PCC BASE COURSE
  - ② [Hatched Box] BITUMINOUS SURFACE REMOVAL - VARIABLE DEPTH
  - ③ [Hatched Box] TREE REMOVAL, ACRES
  - ④ [Wavy Line] FENCE REMOVAL
  - ⑤ [Hatched Box] FULL-DEPTH AND RIGID PAVEMENT, AND PCC BASE COURSE TO BE BROKEN UP AND LEFT IN PLACE AS PER ARTICLE 205.03 (COST TO BE INCLUDED IN EARTH EXCAVATION)
  - ⊗ TREE REMOVAL
  - ⑥ NOTE: FLEXIBLE PAVEMENT (AGGREGATE SURFACE OR BITUMINOUS SURFACE OVER FLEXIBLE BASE) TREATMENT REMOVAL AS PER ARTICLE 205.03 (COST TO BE INCLUDED IN EARTH EXCAVATION)



REVISIONS	
NAME	DATE

ILLINOIS DEPARTMENT OF TRANSPORTATION  
**REMOVAL ITEMS**  
**IL. ROUTE 336**  
**STA. 517+00 TO STA. 529+00**

NOTE: SEE STATUS OF UTILITIES TO BE ADJUSTED FOR FURTHER INFORMATION ON UTILITY CONFLICTS.

DATE 3/30/06  
DRAWN BY  
CHECKED BY