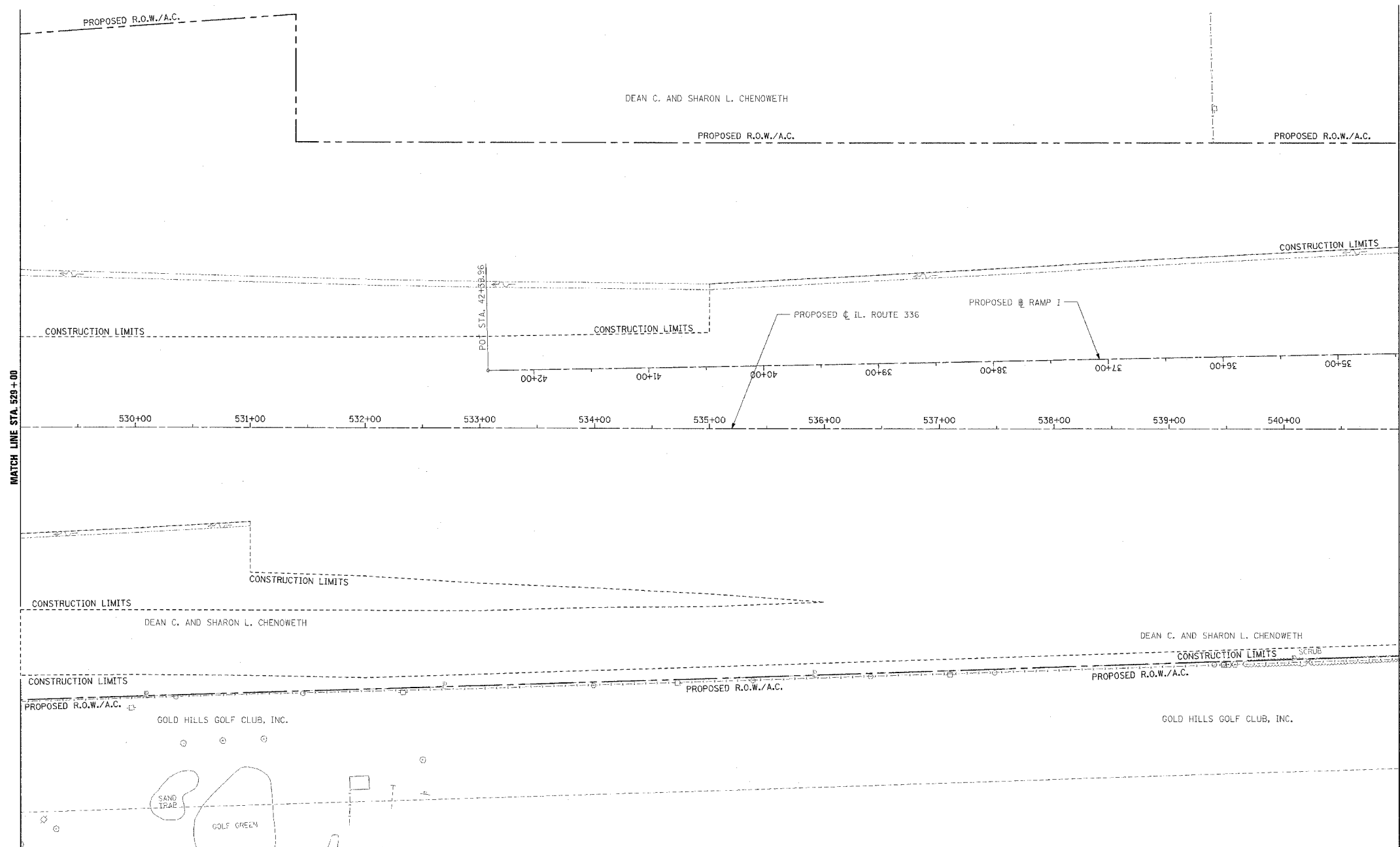


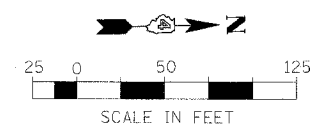
F.A.P. RTE.	SECTION	COUNTY	TOTAL SHEETS	SHEET NO.
315	55-2	McDONOUGH	1025	113
STA. 529+00		TO STA. 541+00		
FED. ROAD DIST. NO. 4		ILLINOIS FED. AID PROJECT		



**LEGEND**

- (IL. RTE. 336 REMOVAL ONLY)
- ① [Symbol] PAVEMENT REMOVAL INCLUDES FULL-DEPTH AND RIGID PAVEMENT, AND PCC BASE COURSE
  - ② [Symbol] BITUMINOUS SURFACE REMOVAL - VARIABLE DEPTH
  - ③ [Symbol] TREE REMOVAL, ACRES
  - ④ [Symbol] FENCE REMOVAL
  - ⑤ [Symbol] FULL-DEPTH AND RIGID PAVEMENT, AND PCC BASE COURSE TO BE BROKEN UP AND LEFT IN PLACE AS PER ARTICLE 205.03 (COST TO BE INCLUDED IN EARTH EXCAVATION)
  - [Symbol] TREE REMOVAL
  - ⑥ NOTE: FLEXIBL PAVEMENT (AGGREGATE SURFACE OR BITUMINOUS SURFACE OVER FLEXIBLE BASE) TREATMENT REMOVAL AS PER ARTICLE 205.03 (COST TO BE INCLUDED IN EARTH EXCAVATION)

NOTE: SEE STATUS OF UTILITIES TO BE ADJUSTED FOR FURTHER INFORMATION ON UTILITY CONFLICTS.



REVISIONS	
NAME	DATE

ILLINOIS DEPARTMENT OF TRANSPORTATION

**REMOVAL ITEMS**  
**IL. ROUTE 336**  
**STA. 529+00 TO STA. 541+00**

DATE 3/30/06

DRAWN BY \_\_\_\_\_  
 CHECKED BY \_\_\_\_\_