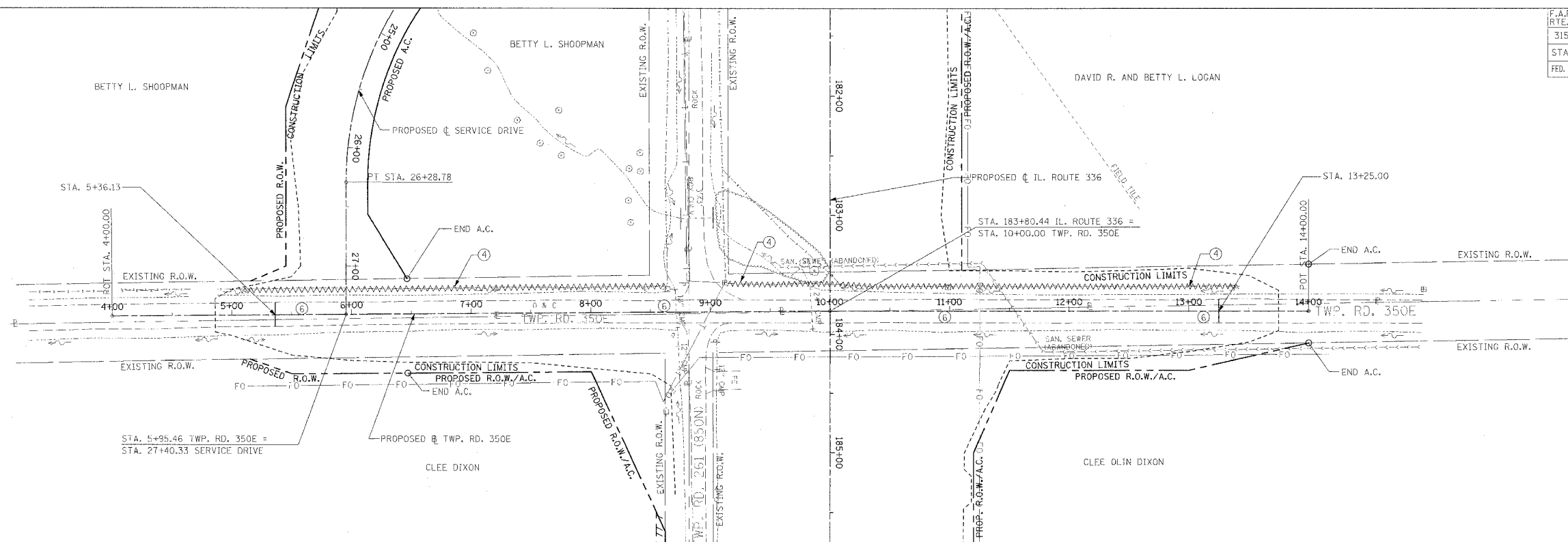
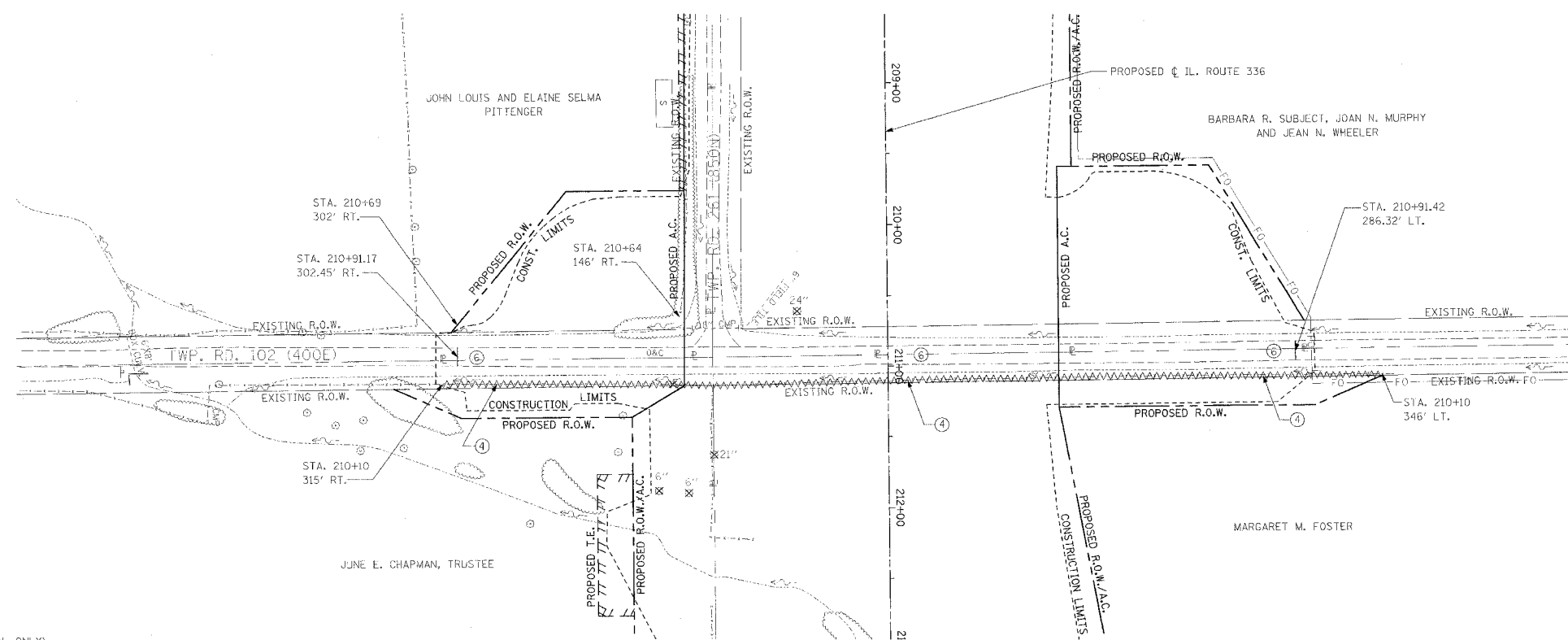


F.A.P. RTE.	SECTION	COUNTY	TOTAL SHEETS	SHEET NO.
315	55-2	McDONOUGH	1025	118
STA. 4+50		TO STA. 14+00		
FED. ROAD DIST. NO. 4 ILLINOIS FED. AID PROJECT				

④ FENCE REMOVAL
 LT. STA. 5+00 TO LT. STA. 8+65
 LT. STA. 9+14 TO LT. STA. 13+43



④ FENCE REMOVAL
 RT. STA. 210+64 TO RT. STA. 210+69
 LT. & RT. STA. 211+10



LEGEND

- (TWP. RD. 350E AND TWP. RD. 102 REMOVAL ONLY)
- ① [Symbol] PAVEMENT REMOVAL INCLUDES FULL-DEPTH AND RIGID PAVEMENT, AND PCC BASE COURSE
 - ② [Symbol] BITUMINOUS SURFACE REMOVAL - VARIABLE DEPTH
 - ③ [Symbol] TREE REMOVAL, ACRES
 - ④ [Symbol] FENCE REMOVAL
 - ⑤ [Symbol] FULL-DEPTH AND RIGID PAVEMENT, AND PCC BASE COURSE TO BE BROKEN UP AND LEFT IN PLACE AS PER ARTICLE 205.03 (COST TO BE INCLUDED IN EARTH EXCAVATION)
 - [Symbol] TREE REMOVAL
 - ⑥ NOTE: FLEXIBLE PAVEMENT (AGGREGATE SURFACE OR BITUMINOUS SURFACE OVER FLEXIBLE BASE) TREATMENT REMOVAL AS PER ARTICLE 205.03 (COST TO BE INCLUDED IN EARTH EXCAVATION)

NOTE: SEE STATUS OF UTILITIES TO BE ADJUSTED FOR FURTHER INFORMATION ON UTILITY CONFLICTS.

REVISIONS	
NAME	DATE

ILLINOIS DEPARTMENT OF TRANSPORTATION

REMOVAL ITEMS
TWP. RD. 350E
STA. 4+50 TO STA. 14+00
TWP. RD. 102

DATE 3/30/06

DRAWN BY
 CHECKED BY