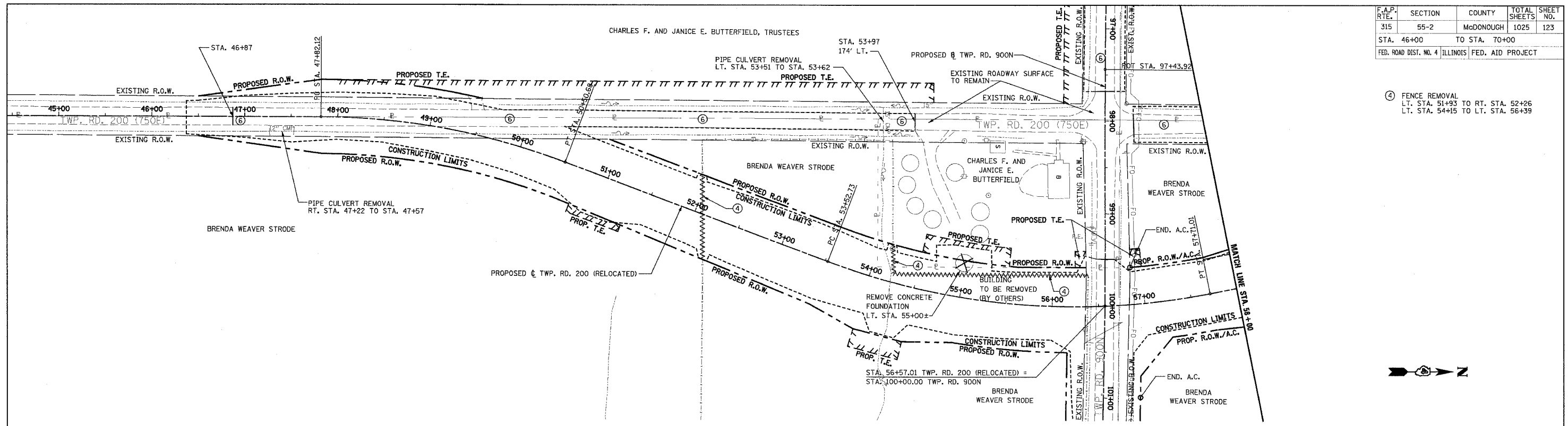
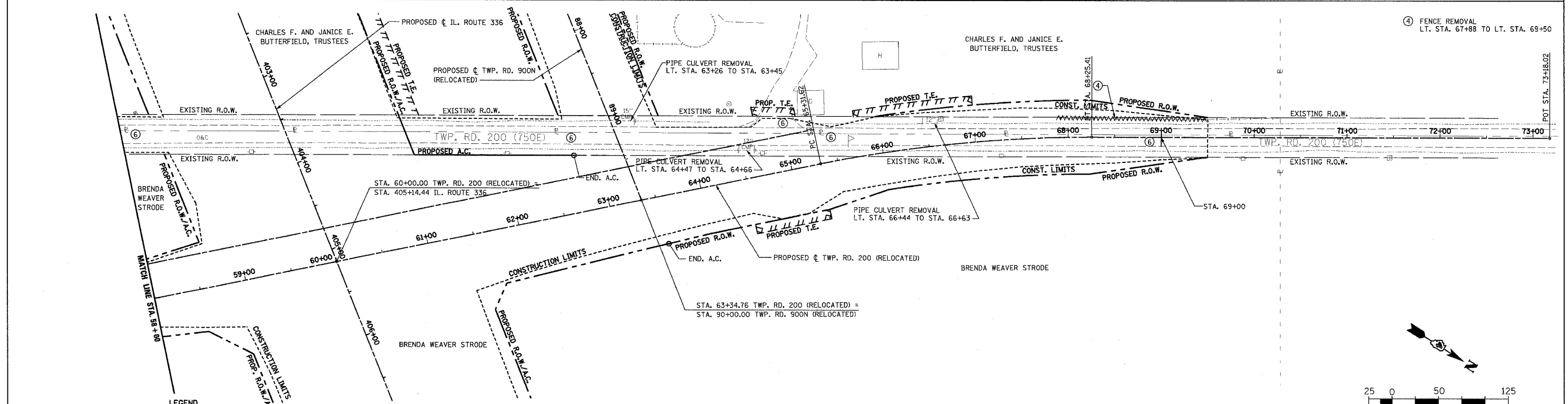


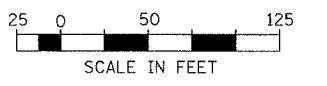
F.A.P. RTE.	SECTION	COUNTY	TOTAL SHEETS	SHEET NO.
315	55-2	McDONOUGH	1025	123
STA. 46+00		TO STA. 70+00		
FED. ROAD DIST. NO. 4 ILLINOIS FED. AID PROJECT				



④ FENCE REMOVAL
LT. STA. 51+93 TO RT. STA. 52+26
LT. STA. 54+15 TO LT. STA. 56+39



④ FENCE REMOVAL
LT. STA. 67+88 TO LT. STA. 69+50



- LEGEND**
- (TWP. RD. 200 (RELOCATED) REMOVAL ONLY)
- ① [Symbol] PAVEMENT REMOVAL INCLUDES FULL-DEPTH AND RIGID PAVEMENT, AND PCC BASE COURSE
 - ② [Symbol] BITUMINOUS SURFACE REMOVAL - VARIABLE DEPTH
 - ③ [Symbol] TREE REMOVAL, ACRES
 - ④ [Symbol] FENCE REMOVAL
 - ⑤ [Symbol] FULL-DEPTH AND RIGID PAVEMENT, AND PCC BASE COURSE TO BE BROKEN UP AND LEFT IN PLACE AS PER ARTICLE 205.03 (COST TO BE INCLUDED IN EARTH EXCAVATION)
 - [Symbol] TREE REMOVAL
 - ⑥ NOTE: FLEXIBLE PAVEMENT (AGGREGATE SURFACE OR BITUMINOUS SURFACE OVER FLEXIBLE BASE) TREATMENT REMOVAL AS PER ARTICLE 205.03 (COST TO BE INCLUDED IN EARTH EXCAVATION)

NOTE: SEE STATUS OF UTILITIES TO BE ADJUSTED FOR FURTHER INFORMATION ON UTILITY CONFLICTS.

REVISIONS	
NAME	DATE

ILLINOIS DEPARTMENT OF TRANSPORTATION

REMOVAL ITEMS
TWP. RD. 200 (RELOCATED)
STA. 46+00 TO STA. 70+00

DATE 3/30/06

DRAWN BY _____
CHECKED BY _____